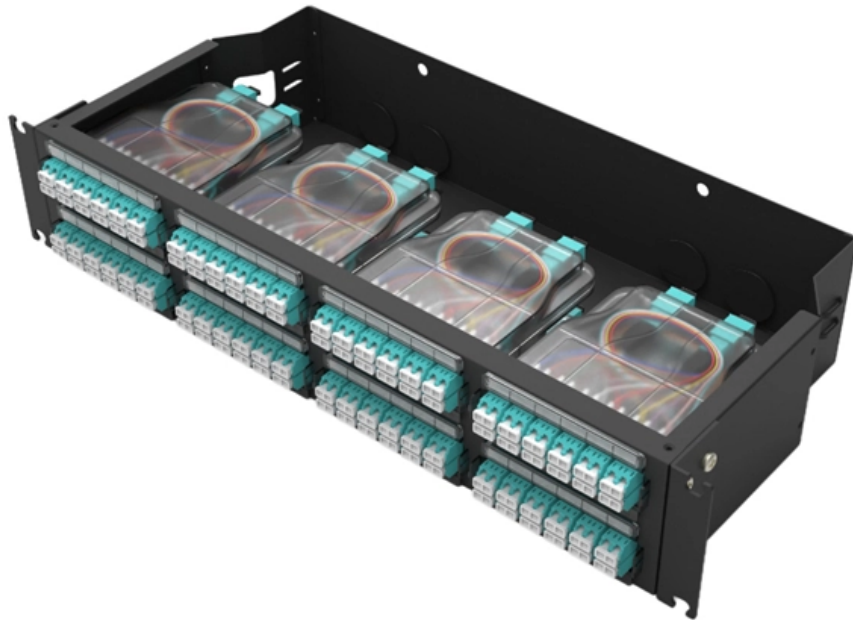


# What is an access-level switch





## Overview

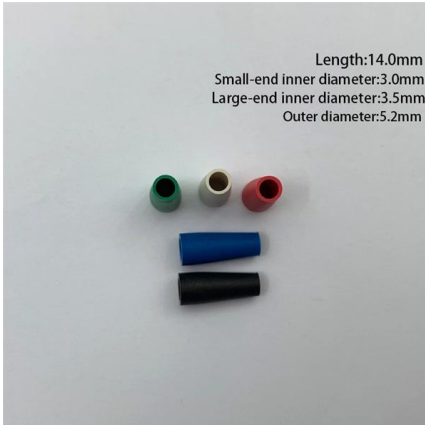
---

In a typical enterprise network architecture, the access layer switch is the first point of contact between end-user devices and the rest of the network.



## What is an access-level switch

---



### What Kind of Access Layer Switch Should You Get?

Because the access layer's primary function is to allow end users to connect to the network, access layer switches are frequently low cost and have

[Contact Us](#)

### About delegates: Allow someone to manage your mail and calendar in

As the person granting permission, you determine the level of access that the delegate has to your calendar or mail folders. You can grant a delegate permission to read items in your folders or

[Contact Us](#)



### What is an access switch and how to select access switches?

What is an access switch? Learn the features and applications, and know how to select the right access switch for your network needs. Ruijie Networks' access switches here for you.

[Contact Us](#)



### WORLD WIDE WEB JOURNAL Home

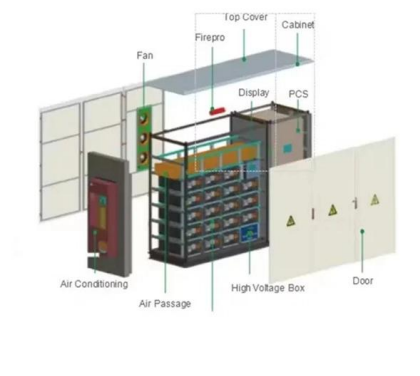
will open to start the export process. The process may take but once it finishes a file will be downloadable from your browser. You may continue to browse the DL while the export process is in



### What is an Access Level?

Access Level explained with types & security importance. Learn how to implement access control and protect your business systems now.

[Contact Us](#)



### Understanding Access Switches: Key Components of

Explore the role of access switches in your LAN setup. Understand their key components, functions in the access layer, and how they integrate into

[Contact Us](#)



### Understanding Access Switches: Key Components of

An access switch or layer two switch is a device used to connect the end-user equipment, including computers, printers, and IP telephones, to the

[Contact Us](#)





## Understanding the Role of an Access Switch in Your

Access switches are crucial to managing the data packet flow in a network's access layer. They direct data packets between connected endpoints

[Contact Us](#)



## Core Switch vs. Distribution Switch vs. Access Switch

The access switch is the network switch that connects the access layer with the subnets. The subnets are integrated with access devices like routers, IP devices,

[Contact Us](#)

## Obsessed with Tomodachi Life? One of these Switch styluses will level

These are generic styluses, so as well as helping you level up your sketches on your Switch or Switch 2, most will also work with whatever other touchscreen devices you have lying about.

[Contact Us](#)



## Access vs. Distribution vs. Core Switch Comparison Guide

Distribution Layer Switches: Positioned between the access and core layers, distribution switches aggregate traffic from multiple access switches. They are typically Layer 3 devices responsible for

[Contact Us](#)

## How to choose an access level switch



What is the main task of access level switches?  
Users with the same access layer (access level) have the ability to connect to network applications on the local

[Contact Us](#)



### What is the Access Switch?

A typical enterprise hierarchical LAN campus network design includes an access layer, distribution layer, and the core layer. In each layer, the enterprise switches

[Contact Us](#)

### FS Access Switches Selection Guide for Your Networks

In today's interconnected world, choosing the right access switch is crucial for ensuring efficient network performance. This guide will help you

[Contact Us](#)



### What Is an Access Switch? The Definitive Edge Network Guide

An access switch is a network edge device that directly connects end-user hardware such as computers, IP phones, wireless access points, cameras, and IoT devices to the broader

[Contact Us](#)



## How to choose an access level switch

How to choose an access level switch How to choose an access level switch? First, let's start with the three-tier network architecture: The three-tier network

[Contact Us](#)



## Core Switch vs. Distribution Switch vs. Access Switch

Comprehensive guide to Core, Distribution, and Access Switches. Roles in the network and important parameters explained.

[Contact Us](#)

## What Is an Access Layer Switch? Guide complet

In a typical enterprise network architecture, the access layer switch is the first point of contact between end-user devices and the rest of the network. These switches connect endpoints such as PCs,

[Contact Us](#)



## What is the Access Switch?

What does an Access Layer Switch do? As the physical entity of the access layer, access switches are responsible to connect both to the distribution layer switches

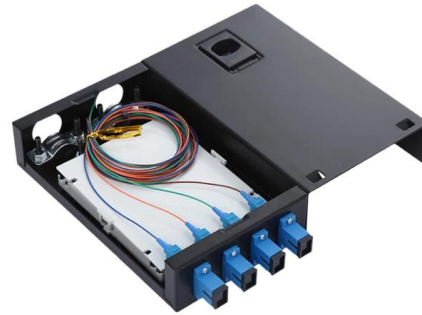
[Contact Us](#)



## Custom agents in VS Code

VS Code automatically detects custom agents defined at the organization level to which your account has access. These agents appear in the Agents dropdown in

[Contact Us](#)



## Understanding the Role of an Access Switch in Your

Explore the crucial role of an access switch in your network. Learn how it connects end-users and devices via Ethernet, enhancing overall performance.

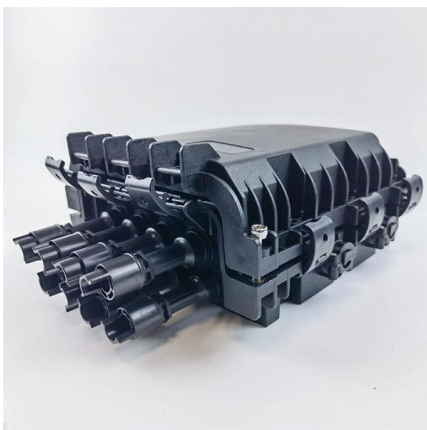
[Contact Us](#)



## What Is an Access Switch? The Definitive Edge Network Guide

Learn what an access switch is, how it works at the network edge, why PoE and port density matter, and how Wi-Fi 7 and IoT change access-layer requirements.

[Contact Us](#)



## L2 vs L3 Switch: How to Choose for Your Access Layer

This article breaks down the differences between L2 and L3 switches in the access layer, analyzes key decision factors like network scale and complexity, and finally provides a practical

[Contact Us](#)



### **What is a VLAN (Virtual LAN)?**

Computers on the LAN connect to the same network switch, either directly or through wireless access points (APs) connected to the same switch.

[Contact Us](#)



### **What is an access switch and how to select access switches?**

As key components in a network architecture, access switches are fundamental and widespread in hierarchical network design. An access switch serves as an interface for end-user

[Contact Us](#)

## **Contact Us**

---

For datasheets, pricing, or custom fiber access solutions, please visit:  
<https://www.frindel.es>