

Welding cable trays at construction site





Welding cable trays at construction site

LEGRAND CABLE TRAYS TECHNICAL GUIDE



In accordance with its continuous improvement policy, Legrand reserves the right to change the specifications and illustrations without notice. All illustrations, descriptions and technical information

[Contact Us](#)

Cable Tray and Conduit Installation Method Statement

Step-by-step cable tray and conduit installation method with safety, quality and inspection procedures as per IEEE standards.

[Contact Us](#)



Method Statement installation of Cable Trays and Ladders

This method statement covers the site installation of the cable tray & ladders and the requirements of checks to be carried out.

[Contact Us](#)

CABLE TRAY INSTALLATION PROCEDURE

Locate the area where cable tray shall be installed as per the Issued For Construction (IFC) drawings. Prepare the required tools and materials to be used

[Contact Us](#)



Best Practice Guide to Cable Ladder and Cable Tray Systems

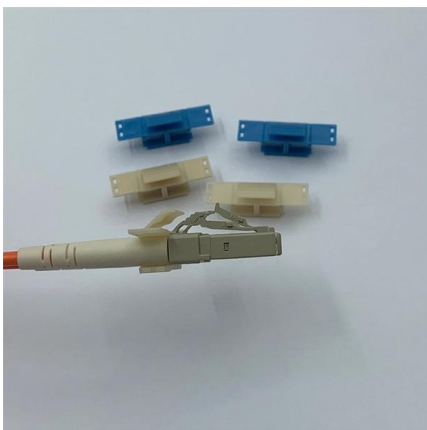
This publication is intended as a practical guide for the proper and safe* installation of cable ladder systems, cable tray systems, channel support systems and associated supports.

[Contact Us](#)

METHOD STATEMENT FOR CABLE TRAY INSTALLATION

In case of discrepancy of cable tray layout against site conditions, shall be informed for final disposition. 7.1.5 Install cable tray as per latest issued Approved for Construction drawing.

[Contact Us](#)



Microsoft Word

Metallic cable trays shall be permitted to be used as equipment grounding conductors where continuous maintenance and supervision ensure that qualified persons service the installed cable tray system

[Contact Us](#)



Cable Tray SHIB NAL

Cable trays are not raceways, but they are treated as a structural component of a facility's electrical system. Cable trays are a part of a planned cable management system to support, route, protect and

[Contact Us](#)



Method Statement for Installation of Cable Tray or Trunking

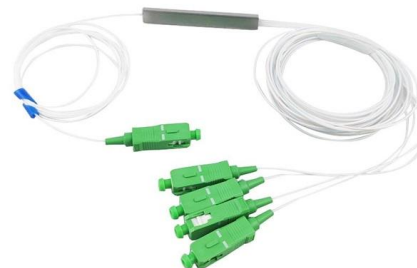
Provide sufficient space around cable tray for access. Cable Support System Use fish plate to joint & align cable tray where cable tray passes through

[Contact Us](#)

Cable Tray Technical Guide A practical guide to product selection and

Cable Tray Technical Guide A practical guide to product selection and installation This guide for engineers and installers has been developed by ABB as a practical reference regarding cable tray

[Contact Us](#)



Step by Step Guide of the Cable Tray work plan

Welding activity when required, ensure welding cables and extension is free from any defects, area must be barricaded and ensure presence of fire extinguisher and fire blankets on working

[Contact Us](#)



Cable Tray Fabrication Method Statement

METHOD OF STATEMENT Cable tray fabrication and installation - Free download as Word Doc (.doc), PDF File (.pdf), Text File (.txt) or read online for free. The

[Contact Us](#)



Cable Tray Safety Risk Assessment , PDF , Welding , Construction

This document analyzes environmental, health and safety risks associated with cable tray fixing work at a construction site. It identifies 5 key activities: 1) shifting cable trays, 2) working at heights, 3)

[Contact Us](#)

The Comprehensive Guide to Cable Tray Systems:

Master cable tray systems with our expert guide covering structural engineering, material selection, and NEC compliance to ensure safe, efficient,

[Contact Us](#)



Master Cable Tray Installation: A Professional Step-by

Learn how to install cable trays for large-scale projects with our professional, step-by-step guide covering industry standards, safety protocols,

[Contact Us](#)



Hilti solutions for fastening on steel

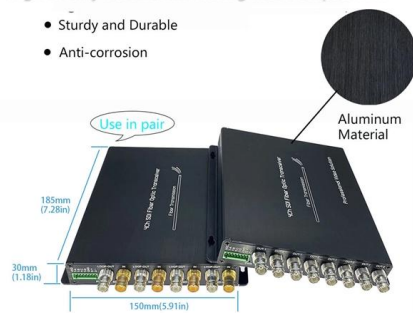
Once the materials are melted appropriately, the stud is plunged into the molten area and held in place as the metals solidify to form the welded connection. Besides

[Contact Us](#)



High Quality Aluminum Housing with Compact Size

- Sturdy and Durable
- Anti-corrosion



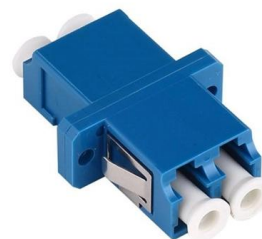
CABLE TRAYS GENERAL INFORMATION AND

Using cable trays as walkways can cause personal injury and also damage cable tray and installed cables. Performances of cable tray systems are dependent on

[Contact Us](#)

Best Practice Guide to Cable Ladder and Cable Tray Systems

This guide covers cable ladder systems, cable tray systems, channel support systems and associated supports intended for the support and accommodation of cables and possibly other electrical



[Contact Us](#)



Technical Specification for Cable tray installation and cable laying work

Approval of IPR shall be obtained for site preparation and marking the cable tray routes and locations of cable tray support before proceeding with the erection and installation work.

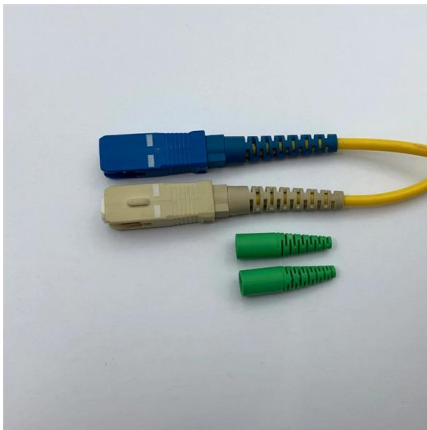
[Contact Us](#)



Technical Guidelines for Cable Tray Installation and

Cable tray installation must comply with specific technical standards to ensure electrical safety, system reliability, and long-term maintainability. This document

[Contact Us](#)



Cable Tray Technical Guide A practical guide to product selection and

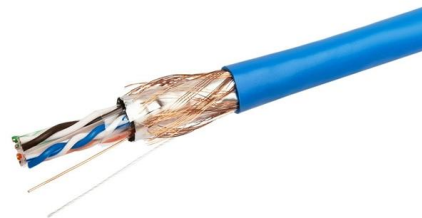
In designing supports for a cable tray system, consideration should be given to the loads associated with future cable additions and any additional loading that may be applied to the cable tray system (e.g.,

[Contact Us](#)

METHOD STATEMENT FOR Cable tray and trunking system installation

Cable tray and trunking system relevant to this particular section of works will be checked and verified that these are correct type.

[Contact Us](#)



Electrical Cable Tray Construction Use: Boosting Safety

Electrical cable trays play a vital role in modern construction projects, providing a reliable solution for managing electrical cables efficiently and safely.

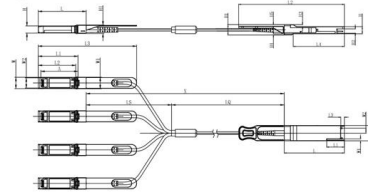
[Contact Us](#)



Technical Guidelines for Cable Tray Installation and

Shortest and Straightest Path: To reduce cable loss and simplify maintenance, cable routes should be as short and straight as possible. Segregation of Power and

[Contact Us](#)



Unit mm

GSFP28	L	L3	L2	L3	L4	W	W1	W2	H	H1	H2	H3	H4	H5	H6
Max	72.2	-	128	4.35	61.4	18.45	-	6.2	8.6	12.4	5.35	2.5	1.6	2.0	-
Type	72.0	-	4.20	61.2	18.35	-	-	8.5	12.2	5.2	2.3	1.5	1.8	6.55	-
Min	68.8	16.5	124	4.05	61.0	18.25	2.2	5.8	8.4	12.0	5.05	2.1	1.3	1.6	-

SFP28	L	L1	L2	L3	W	W1	W2	H	H1	A
Max	57.6	47.7	44.55	119.9	13.8	14.0	12.3	8.7	10.3	45.25
Type	57.4	47.5	44.35	117.9	13.55	13.8	12.1	8.5	10.1	45
Min	57.2	47.3	44.15	115.9	13.3	13.6	11.9	8.4	9.9	44.65



GUIDE CABLE TRAYS TECHNICAL

In accordance with its continuous improvement policy, Legrand reserves the right to change the specifications and illustrations without notice. All illustrations, descriptions and technical information

[Contact Us](#)

Installation of Cable Tray, Trunking And Accessories

Before beginning installation, be sure that the method statement for installation of cable tray, trunking, and accessories is approved by the project and construction manager before the

[Contact Us](#)



Contact Us

For datasheets, pricing, or custom fiber access solutions, please visit:
<https://www.frindel.es>