

Weaknesses in cable tray hanger distance





Overview

Fixed supports are critical for the overall stability and safety of the cable tray system. When installing two cable trays in parallel at the same height, the distance between them should be no less than 0.8 (Other Mechanical Stresses (AJ)) in that document provides requirements for cable support. The mechanical and electrical characteristics, tests, certifications, overall quality management, recommendations mentioned in this technical guide only apply to our own cable management ranges and cannot under any circumstances be transposed to silicone, overheating or.



Weaknesses in cable tray hanger distance



Cable Tray SHIB NAL

Cable trays are not raceways, but they are treated as a structural component of a facility's electrical system. Cable trays are a part of a planned cable management system to support, route, protect and

[Contact Us](#)

Cable Tray Technical Guide A practical guide to product selection and

A practical guide to product selection and installation This guide for engineers and installers has been developed by ABB as a practical reference regarding cable tray characteristics, installation, and

[Contact Us](#)



How to Fix Common Cable Management Issues using

This comprehensive guide investigates the most frequent wire management challenges faced in real-world setups and demonstrates how the

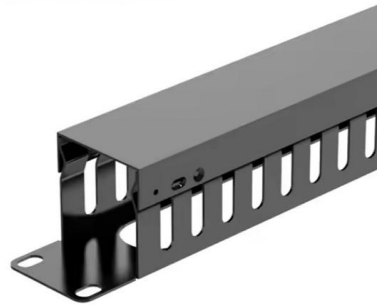
[Contact Us](#)



How to Fix Common Cable Management Issues using

Discover common cable management problems and how cable tray accessories effectively solve them to ensure safety and performance.

[Contact Us](#)



Guide to cable support systems

The mesh cable trays are suitable for the installation of power cables and cables in various areas of application. The grid spacings mean that cables can be inserted and run out in various directions.

[Contact Us](#)



Cable Support Distances

For flexible systems, where the cable is not directly fixed to the support system, for example a J hanger installation, calculations need to be undertaken to determine the required distance between the cable

[Contact Us](#)



Precautions for Cable Tray Installation

Cable Tray Installation Guide The correct installation of cable trays is crucial for establishing a reliable and efficient cable system. It ensures that cables are

[Contact Us](#)

Best Practice Guide to Cable Ladder and



Cable Tray Systems

Cable ladders and cable trays should be mounted far enough off the floor or roof to allow the cables to exit through the bottom of the cable ladder or cable tray.

[Contact Us](#)



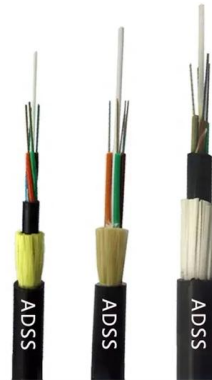
NEC Article 392 Guide: Ensuring Compliance for Cable

Strong hangers or brackets should be used to ensure that cable trays do not fall or hang. According to the regulations under NEC 392.30, these

[Contact Us](#)



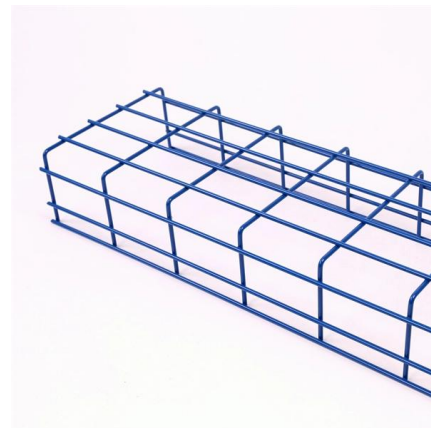
What are the standard requirements of the cable tray bracket, and the



Typical Design Philosophy of Cable Trays for Power

The trays shall be strong enough to keep the deflection of the fully loaded tray within permissible limits. In general, cable trays run in parallel to building walls and

[Contact Us](#)



B-Line series Cable Tray Design Considerations

As an industry leader in cable tray, Eaton offers one of the widest ranges of cable management solutions available in the market today with its B-Line series portfolio. With unmatched quality and service, we

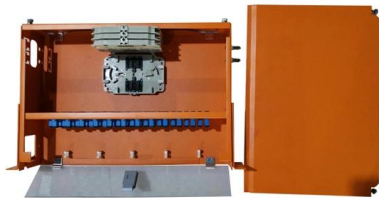
[Contact Us](#)



The cable tray bracket and bracket can be laid on the process pipe rack, under the floor, on the wall, in the cable ditch, and the installation forms of the cable tray bracket and bracket include suspension

[Contact Us](#)

190X95X25mm



HANGERS & BRACKETS Lengths Cable Ladder

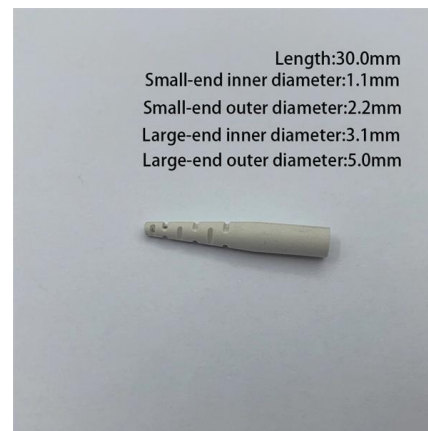
QQ QQ Maximum QQ 300mm, the tray overhead hangers are suitable for use with all types of Vantrunk cable tray. The loading table below gives the recommended maximum load for each size of tray

[Contact Us](#)

Cable Tray Support Spacing: Key Guidelines Explained

Explore the essential cable tray support spacing requirements for safe and efficient installations. Learn NEC guidelines for perforated, ladder, and wire

[Contact Us](#)



Criteria for Sizing, Designing, Installing and Supporting of Cable-Tray

9.3 Tray Rigidity: For pipe racks, building steel, or tee-structure mountings for which support spacing is determined by others, tray rigidity shall be selected from the manufacturer's data based on the

[Contact Us](#)



Cable Tray Spacing Standards for Installation and Safety

Discover the essential cable tray spacing requirements for safe and efficient installation. Learn key standards, horizontal and vertical spacing, and more.

[Contact Us](#)



Core Principles for Electrical and Instrumentation Cable

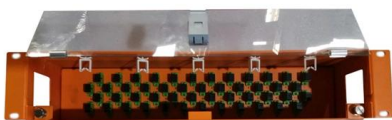
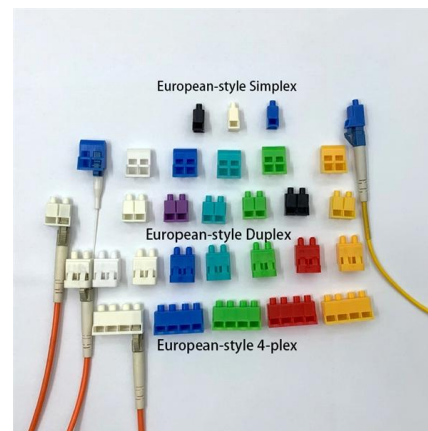
2. Minimum Spacing and Segregation Spacing Standards: Electrical (power) and instrumentation (signal/control) cable trays should maintain a minimum vertical

[Contact Us](#)

Cable Tray Support Spacing: Key Guidelines Explained

Explore the essential cable tray support spacing requirements for safe and efficient installations. Learn NEC guidelines for perforated, ladder, and wire mesh trays.

[Contact Us](#)



Cable Support Distances

Cable Support Distances Although BS 7671 touches on the subject of cable supports, it does not detail specifically what these support distances should be. Section 522.8 (Other Mechanical Stresses (AJ))

[Contact Us](#)



Decoding Cable Tray Support Structures: Tips and Insights

Discover efficient cable tray support structures for optimal cable management. Learn about hanger, wall-mounted, and Unistrut systems for safer

[Contact Us](#)



TECHNICAL GUIDE

This depends on the type of data cable, the number of power cables and the type of cable tray. Otherwise, the distance of 20 cm provides a simple and sensible rule of thumb.

[Contact Us](#)

GUIDE CABLE TRAYS TECHNICAL

NEMA VE 1-2017 Specifies requirements for metal cable trays and associated fittings designed for use in accordance with the rules of Canadian Electrical Code, Part I and the National Electrical Code®



[Contact Us](#)

Standard for Installing Metal Cable Tray Systems

Metal cable tray systems for power communications cabling shall be installed in accordance with NECA/NEMA 105, Standard for Installing Metal Cable Tray Systems (ANSI).

[Contact Us](#)





Beama Best Practice Guide , Installation Of The System , Cable

Cable ladders and cable trays should be mounted far enough off the floor or roof to allow the cables to exit through the bottom of the cable ladder or cable tray.

[Contact Us](#)



Cable tray installation requirements-ZM Technology Co., Ltd.

As a supporting project of the wiring project, the cable tray has no special normative guidance, and the specifications and forms of various manufacturers lack universality.

[Contact Us](#)

Contact Us

For datasheets, pricing, or custom fiber access solutions, please visit:
<https://www.frindel.es>