

View switch optical power commands





Overview

Log in to the switch console to run the privileged EXEC mode of the Cisco switch, use the `fiber-ports-optical-transceiver` command. The Output Power (mWatt) field in the command output indicates the received power of the optical module, and the Input Power (mWatt) field indicates the. Monitoring the optical power of SFP (Small Form-factor Pluggable) modules is a critical step in maintaining stable network links. Even if an interface appears up, degraded Tx/Rx levels can cause intermittent flapping, packet loss, or err-disabled states. If you run fiber or copper uplinks in a small office, home lab, or data closet, SFPs (and SFP+) are the little parts that keep your links alive.



View switch optical power commands



Checking 100GE Transmit (TX) and Receive (RX) Optical Power on

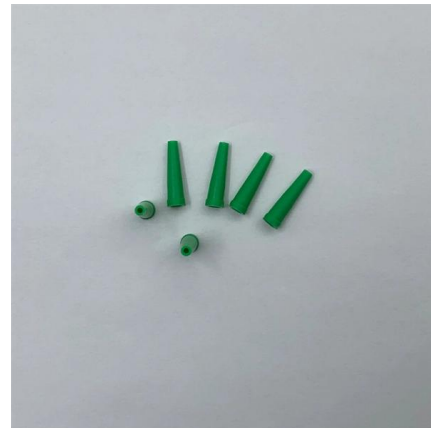
For checking transmission links on Cisco Routers, it is good to know how to find out the optical power of 100GE modules or interfaces for troubleshooting and making sure the desired or optimal range is

[Contact Us](#)

How Do I View the Transmit and Receive Power of an Optical Module?

Run the display transceiver verbose command. In the command output, RX Power (dBm) displays the receive power of the optical module, and TX Power (dBm) displays its transmit power.

[Contact Us](#)



How Do I Query the Optical Power of an Interface?

CloudEngine 16800, 12800, 9800, 8800, 7800, 6800, and 5800 Series Switches Troubleshooting Guide (V100 and V200) How Do I Query the Optical Power of an Interface? You can

[Contact Us](#)

How to View Optical Module Parameters

Using a Command If an optical module is installed in a running device, you can run the display transceiver command to view parameters of the optical module, including the center wavelength,



Cisco Command to Check SFP Module Details

For network engineers, knowing how to view and interpret SFP information from the Cisco command-line interface (CLI) is essential. By checking

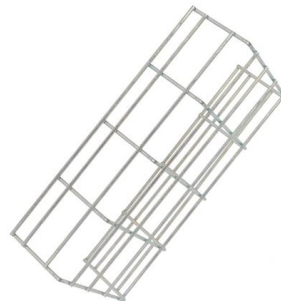
[Contact Us](#)



show interfaces diagnostics optics , Junos OS , Juniper Networks

Display diagnostics data and alarms for Gigabit Ethernet optical transceivers (SFP, SFP+, XFP, QSFP+, or CFP) installed in EX Series Switches or QFX Series Switches. The information provided by this

[Contact Us](#)



Cisco SFP Commands Cheat Sheet: Check Status

Learn how to check SFP module health on Cisco switches. This guide covers essential CLI commands (show inventory, DOM), fixes for "unsupported

[Contact Us](#)

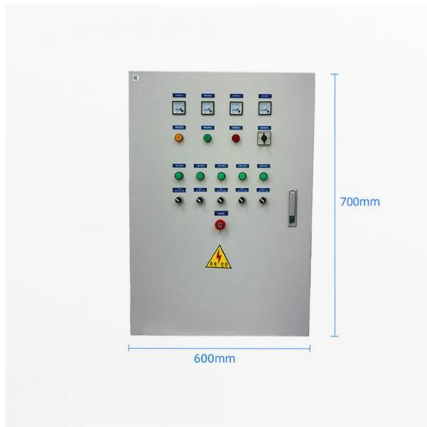




FAQ-How Do I View the Transmit and Receive Optical Power of an Optical

Modular Switch V200R002& V200R003 The Current Rx Power (dBm) field in the command output indicates the current receive power of the optical module, and the Current Tx

[Contact Us](#)



How Do I Query the Optical Power of an Interface?

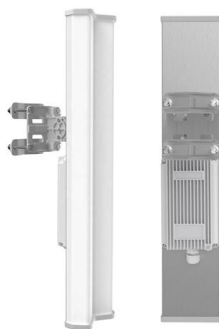
When the receive or transmit power of an optical module exceeds the upper threshold or falls below the lower threshold, the optical module may fail to work properly.

[Contact Us](#)

View the Optical Module Status on a Switch through the Command

Display diagnostics data and alarms for Gigabit Ethernet optical transceivers (SFP, SFP+, XFP, QSFP+, or CFP) installed in EX Series Switches or QFX Series Switches.

[Contact Us](#)



How To Check Optical Power In Juniper Router?

The article also touches on the need to know what optic you have installed in an interface for an MX router and if there is an option to turn on optical

[Contact Us](#)

OPTICAL INFO CHECK COMMAND CISCO

This command displays the details of the transceiver module installed in the specified interface, including its optical power levels, wavelength, and other

[Contact Us](#)



How to easily assess Optical Received Power on all

Below is the CLI command to show only ports that are linked up and the respective optical received power: All optical measurements listed above are

[Contact Us](#)

How Do I View the Transmit and Receive Optical Power

Modular Switch V200R002& V200R003 The Current Rx Power (dBm) field in the command output indicates the current receive power of the optical module, and

[Contact Us](#)



How can I see the optical power in a gigabitethernet interface of the

Solved: Hi, I need your help to know what command Can I use to display the power optics from a interface on a switch WS-4507R+E Cisco IOS Software, Catalyst 4500 L3 Switch

[Contact Us](#)



Ciena Switches To View Optical Module Information

When optical modules are deployed on switches, it is necessary to verify their working status, operating parameters, and internal information through switch commands.

[Contact Us](#)



The Show fiber ports optical transceiver port detail command

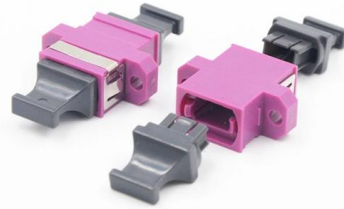
The Show fiber ports optical transceiver port detail command gives inconsistent results on the Dell PowerConnect 6024 and 6024F switches - Product Support Quick Note (PSQN) - 173560.

[Contact Us](#)

Checking TX / RX optical power in Juniper (JunOS)

Checking TX / RX optical power for Juniper Routers For checking transmission links, it is good to know how to find out the optical power for troubleshooting and making sure the desired or optimal range is

[Contact Us](#)



How Can I View SFP Module Optical RX/TX Power

Optical signal strength is an important element affecting the whole optical links. This post mainly introduces how to check SFP modules signals

[Contact Us](#)



Huawei Optical Switch View Optical Module Commands

Taking the Huawei 5700 series switches as an example, the commands to view optical module information are as follows:

[Contact Us](#)



Displaying Optical Module Information

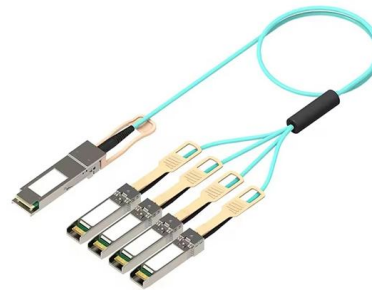
Run the display transceiver diagnosis interface [interface-typeinterface-number] command to view diagnostic information about a specified optical module. This command displays the digital diagnostic

[Contact Us](#)

How to easily assess Optical Received Power on all

The following article describes how to quickly and easily assess the optical receive power from any transceiver installed in any Force10 switch

[Contact Us](#)



How to Check SFP Optical Power Levels on Cisco Switches

Learn how to monitor SFP optical power on Cisco switches, interpret Tx/Rx levels, and troubleshoot fiber link issues. Step-by-step CLI commands, model-specific guidance, and best practices included.

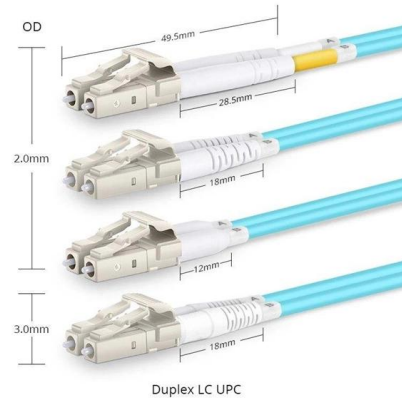
[Contact Us](#)



Checking TX / RX optical power for Huawei Switches and Routers

Or can do filtering: display interface extensive , i Power For other Huawei like those S series Campus switches, use this command: display transceiver interface verbose For

[Contact Us](#)



How To View Port Status And Optical Module Information On Cisco

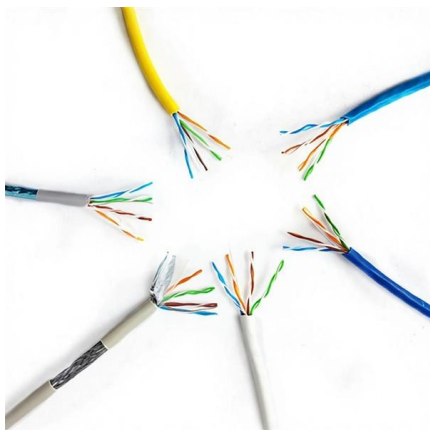
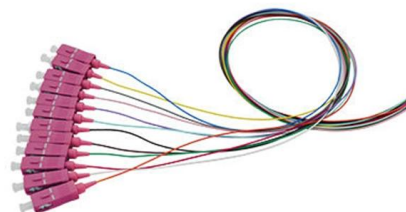
Additionally, identifying module information helps detect coding compatibility between the module and the switch. The following introduces the specific operations to view the working status

[Contact Us](#)

How Do I Check the Transmit and Receive Optical Power of an Optical

CloudEngine 16800, 9800, 8800, and 6800 Series Switches Troubleshooting Guide (V300) How Do I Check the Transmit and Receive Optical Power of an Optical Module? Run the display interface

[Contact Us](#)



Checking TX / RX optical power for Cisco IOS, IOS-XR, NX-OS

Checking TX / RX optical power for Cisco IOS, IOS-XR, NX-OS For checking transmission links, it is good to know how to find out the optical power for troubleshooting and making sure the desired or

[Contact Us](#)



How to show interface transceiver details on Brand

Most brands' ethernet switches provide features to show interface transceiver details information via CLI (Command-Line Interface). Generally, you

[Contact Us](#)



Contact Us

For datasheets, pricing, or custom fiber access solutions, please visit:
<https://www.frindel.es>