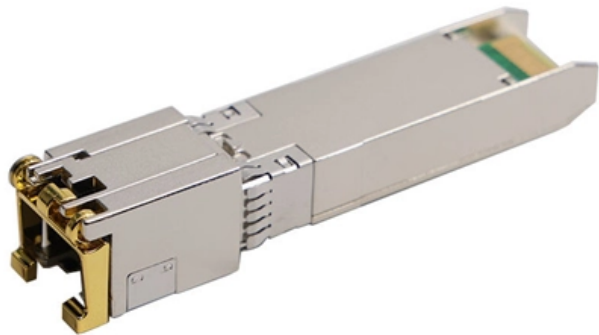


Vertical upward and downward bends of cable trays





Vertical upward and downward bends of cable trays



Ladder Vertical Up & Down Bend - Elcon Industriess

Description Product Description Elcon make Ladder Vertical Bends are components of cable tray systems used for routing cables vertically along a pathway with a bend. They allow for a smooth

[Contact Us](#)

Smooth Transitions: Understanding the Important Role

Cable tray bends play a critical role in ensuring smooth transitions and maintaining the integrity of electrical wiring systems. By providing controlled pathways for

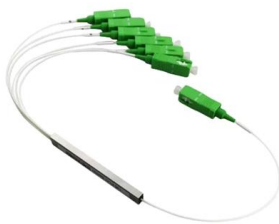
[Contact Us](#)



Types of Cable Trays: Ladder, Perforated, Basket, Solid

Explore all types of cable trays--ladder, perforated, basket, solid, and channel. Learn their uses, materials, pros, cons, and key differences.

[Contact Us](#)



Vertical Bends Cable Tray

This type of bend includes an upward or downward run, alongside a lateral outbranching, allowing a few cables to move toward a different vertical direction. This split functionality remains especially useful



Vertical Outside Bend Perforated Cable Tray, Hot Dip Galvanized,

Vertical 90 degree external riser perforated type cable tray. manufactured from hot dip galvanized steel (HDG), 1.5mm thick, 100mm height, 300mm width, manufactured by BAHRA company. reducing the

[Contact Us](#)



Cable Tray Technical Guide A practical guide to product selection and

Cable tray installed in a hazardous location must contain only those cables that are appropriate for this type of environment as defined in Chapter 5 of the NEC.

[Contact Us](#)



What is a Vertical Cable Tray?

What is a vertical cable tray? This guide explains its types (ladder, solid-bottom), benefits for safety & organization, and key applications in data

[Contact Us](#)





CABLE TRAY SYSTEMS GUIDE

The Ladder Tray features light, rugged, tubular steel construction. It is designed for mechanical support and strain relief in long runs of cable and creates a smooth gradual bend for cable. Rail and stringer

[Contact Us](#)



Steel Cable tray vertical outside bend, 90 Degree

Ideal for commercial and industrial electrical installations where cable trays transition down vertical structures with organized support and cable protection. ? Ladder

[Contact Us](#)



Sidhivinayak Enterprises

Cable Tray Bends Cable tray bends are fittings designed to guide cables smoothly through directional changes, ensuring seamless transitions in cable tray systems.

[Contact Us](#)



Bend Cable Trays, Cable Trays, Cable Tray Bend,

Bend Cable Trays Vertical Inner Bend Cable Tray We offer our clients a wide variety of high quality Vertical Inner Bend Cable Tray that is manufactured from the

[Contact Us](#)





Vertical Inside Bend - Metatech Airsystems Pvt. Ltd.

Vertical Inside Bend for Cable Trays In cable tray accessories, Vertical inside bend is there, this bend is used to bend cable tray running and can be made in any

[Contact Us](#)



GENERAL INFORMATION

As demonstrated in the previous paragraph, Optical Cable Corporation's cable can be installed in vertical rises for great distances. However, due to the practical nature of installing cable, the weight

[Contact Us](#)

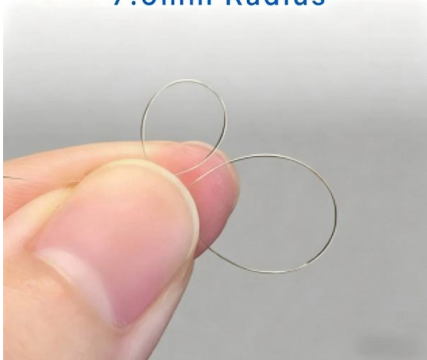
Cable Tray Design and Components Guide

This document provides information about cable trays and accessories, including straight cable trays, perforated trays, returned edge and flange types, and bent

[Contact Us](#)



7.5mm Radius



Sidhivinayak Enterprises

Cable tray bends are fittings designed to guide cables smoothly through directional changes, ensuring seamless transitions in cable tray systems. Category - Cable

[Contact Us](#)



Bend Cable Trays, Vertical Inner Bend Cable Trays,

Vertical Inner Bend Cable Tray We offer our clients a wide variety of high quality Vertical Inner Bend Cable Tray that is manufactured from the premium raw

[Contact Us](#)



Ladder Vertical Up & Down Bend - Elcon Industriess

They allow for a smooth change in the vertical direction of the cables, typically at 90-degree angles, while also providing ventilation through perforations in the metal. These bends are essential for

[Contact Us](#)

Vertical bends, screw connection , OBO

Fittings, cable trays, screw connection - Vertical bends, screw connection.

[Contact Us](#)



Best practice guide to cable ladder and cable tray

Cable ladder and cable tray systems The following recommendations are intended to be a practical guide to ensure the safe and proper installation of

[Contact Us](#)



Ladder Type Cable Tray Vertical Outside Bend

This accessory is designed to allow cables to turn upward or downward while maintaining their proper organization and structural support in the cable tray system.

[Contact Us](#)



Best Practice Guide to Cable Ladder and Cable Tray Systems

This guide covers cable ladder systems, cable tray systems, channel support systems and associated supports intended for the support and accommodation of cables and possibly other electrical

[Contact Us](#)

Smooth Transitions: Understanding the Important Role

Cable tray bends are designed to guide cables around obstacles, changes in direction, or elevations in an electrical system. They come in various

[Contact Us](#)



Vertical Inside Bend , Ramdev Steel Industries

90° bend, Vertical Inner Bend, for all cable tray types of 50 mm side height. Including appropriate fastening material.

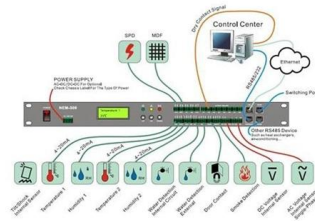
[Contact Us](#)



Vertical Out Side Bend for Cable Trays

Vertical Outside Bends for Cable Trays are specialized components that help cables transition smoothly in vertical directions outside of the primary cable tray path.

[Contact Us](#)



Sidhivinayak Enterprises

Vertical Outside Bend Vertical outside bends are specialized components designed to guide pipelines, conduits, or cables around obstacles or structural elements in a vertical direction, maintaining the

[Contact Us](#)



Contact Us

For datasheets, pricing, or custom fiber access solutions, please visit:
<https://www.frindel.es>