

# **Venezuelan butterfly-shaped drop cable G 654**





## Venezuelan butterfly-shaped drop cable G 654

---



### Optical cable with ITU-T G.654.E fibre removes barriers to delivering

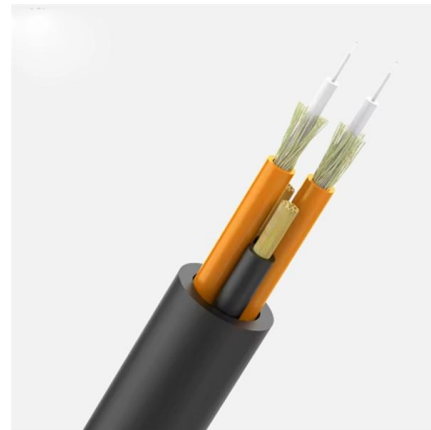
One of the key advantages is gradual migration. With both G.652.D and G.654.E fibres combined, operators can transition to higher-capacity architectures without fully overhauling existing

[Contact Us](#)

### G654.E Fiber Optic Cables

G.654.E fiber optics combine ultra-low loss and large effective area characteristics, significantly improving the performance of long-distance transmission in networks

[Contact Us](#)



### FTTH - Round Drop Armoured Butterfly-Shaped Cable

Briticom ® offers Armoured Butterfly-Shaped Cable as well as a wide range of indoor and outdoor fibre optic distribution, patching and consumer cords including

[Contact Us](#)



### White paper G.654.E Fibre Cable , Acome

By analysing concrete use cases, it highlights innovative solutions--particularly the adoption of G.654.E fibres--that can address these challenges and support the next generation of

[Contact Us](#)



### **Butterfly Flat FTTH Drop Cable Figure 8 drop cable Price in china**

This Drop Cable GJXFH FTTH Indoor Drop Cable uses butterfly flat structure, whose optical fiber unit is positioned in the centre. Two parallel Fiber Reinforce Plastic (FRP) strength members are placed at

[Contact Us](#)



### **G.654 : Characteristics of a cut-off shifted single-mode optical**

Characteristics of a cut-off shifted single-mode optical fibre and cable Superseded

[Contact Us](#)



### **ITU-T Rec. G.654 (03/2020) Characteristics of a cut-off shifted single**

Summary Recommendation ITU-T G.654 describes the geometrical, mechanical and transmission attributes of a single-mode optical fibre and cable which has the zero-dispersion wavelength around

[Contact Us](#)





## Optical Fiber Types

ITU G.654: Covers single-mode fibre which has the zero-dispersion wavelength around 1300 nm wavelength which is cut-off shifted and loss minimized at a wavelength around 1550 nm and which is

[Contact Us](#)



### 4 Core FTTH Fiber Drop Cable G.657A2 FRP LSZH

4 Core FTTH Drop Cable GJXFH SM 9/125 OS2 G657A2 with 2 FRP in Parallel As Strength member LSZH Sheath Butterfly Flat- Figure 8 Cable FTTH

[Contact Us](#)

### Cable fibra óptica 4 hilos Flat Drop B1-004-E3 G654.D

Cable fibra óptica 4 hilos Flat Drop B1-004-E3 G654.D NCM Contáctanos para acordar los detalles de envío Consulta la disponibilidad y formas de pago

[Contact Us](#)



### ITU-T Rec. G.654 (07/2010) Characteristics of a cut-off shifted, single

Summary Recommendation ITU-T G.654 describes the geometrical, mechanical and transmission attributes of a single-mode optical fibre and cable which has the zero-dispersion wavelength around

[Contact Us](#)



## STL G654E 125 Fibre

International Standards STL G654E 125 Fibre complies or exceeds the recommendation of ITU-T G.654.E.

[Contact Us](#)



## G654-E Fiber Cable Specifications , PDF , Optical Fiber , Optics

Design and special properties of Light, thin and particularly robust cable of Cable for direct burial, in applications with high mechanical loads and in areas with rodents of Stranded minibundle (loose tube)

[Contact Us](#)

## ITU-T G.654

This very low loss cut-off shifted fibre (CSF) can be used for long-distance digital transmission applications, such as long-haul terrestrial line systems and submarine cable systems using optical

[Contact Us](#)



## Summary

Recommendation ITU-T G.654 describes the geometrical, mechanical and transmission attributes of a single-mode optical fibre and cable which has the zero-dispersion wavelength around 1 300 nm

[Contact Us](#)



## G.654.E Fibre Cable

The cable acts as a mechanical and environmental shield, protecting the fibre from stress, moisture, temperature changes, and other hazards encountered over its service life.

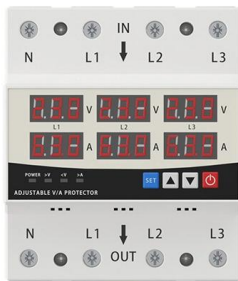
[Contact Us](#)



## LED DISPLAY PANEL

### CURRENT STATUS CLEARLY VISIBLE

IT CAN CLEARLY SHOW THE CURRENT STATUS AND VOLTAGE STATUS,  
WITH EFFICIENT OPERATION AND RAPID RESPONSE.



## 1/2/4F Armored Butterfly Drop Cable for Duct 6.8mm

FTTH Armored Butterfly Drop Cable features dual central fibers, parallel strength members, aluminum armor, and water-blocking tape for durable FTTH

[Contact Us](#)

## High-Speed Long-Haul Optical Fiber Solution

High-Speed Data Transmission: G.654.E fiber is suitable for high-speed data transmission applications, including data centers interconnects, cloud computing infrastructure, and

[Contact Us](#)



## ITU-T

Characteristics of a cut-off shifted single-mode optical fibre and cable SERIES G: TRANSMISSION SYSTEMS AND MEDIA, DIGITAL SYSTEMS AND NETWORKS Transmission media characteristics

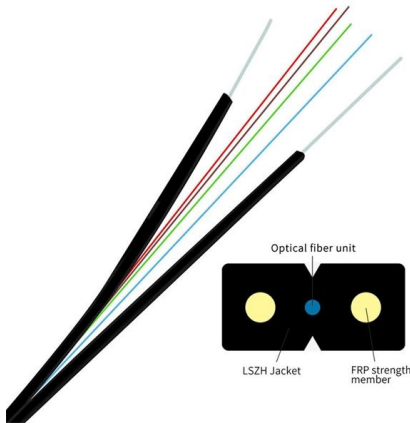
[Contact Us](#)



## White paper G.654.E Fibre Cable , Solutions de câblage

By analysing concrete use cases, it highlights innovative solutions--particularly the adoption of G.654.E fibres--that can address these challenges and support the

[Contact Us](#)



## The Structure of Drop Cable: A Comprehensive Guide , FIBEYE

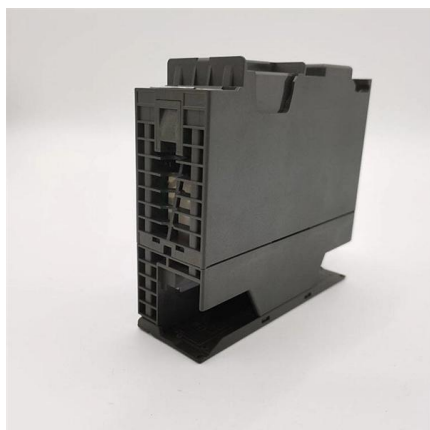
This type of cable gets its name from its butterfly-like cross-sectional shape. The structure of the butterfly drop cable can vary among different manufacturers, but it typically consists of non-metallic

[Contact Us](#)

## Introduction to

Optic fiber is the key to fiber optic network. What is fiber optic network? There are seven kinds of optic fiber according to ITU standard: G651, G652,

[Contact Us](#)



## G654.E Fiber Optic Cables

Huihong Technologies Limited is a trusted and professional manufacturer specializing in G.654.E fiber optic cables, meeting the demands of cutting-edge

[Contact Us](#)

## G652, G657A, G655, G654 Optical Fiber



G654: Ultra-low loss optical fiber, mainly used for transoceanic optical cables. The ordinary core is pure SiO<sub>2</sub>, and the ordinary core needs to be doped

[Contact Us](#)



### **G.654 Fiber Specifications Overview , PDF**

Fiber Selection Guide\_G652, G654, G655 - Free download as PDF File (.pdf), Text File (.txt) or read online for free.

[Contact Us](#)

### **ITU-T Rec. G.654 (12/2006) Characteristics of a cut-off shifted single**

Table 1, G.654.A Attributes, is the base category for a cut-off shifted single-mode optical fibre and cable. This category is suitable for the system in ITU-T Recs G.691, G.692, G.957 and G.977 in the 1550



[Contact Us](#)



### **G.654.E Fibre Cable**

Given that fibre infrastructure is expected to remain in service for decades, hybrid cables that combine both G.652.D and G.654.E fibres offer a practical and future-proof solution.

[Contact Us](#)



## Contact Us

---

For datasheets, pricing, or custom fiber access solutions, please visit:  
<https://www.frindel.es>