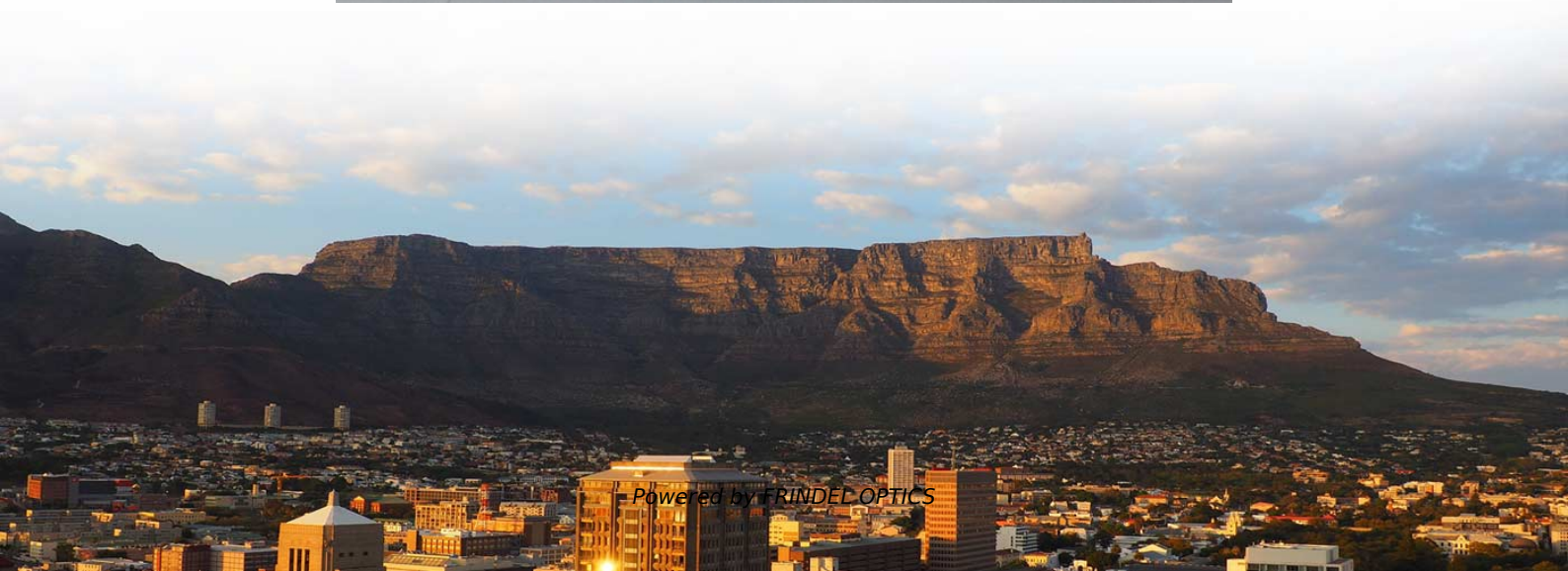


# **VLANs of the aggregation switch**





## Overview

---

The VLAN aggregation function associates a super-VLAN with multiple sub-VLANs. Interfaces in all the sub-VLANs use this IP address as the gateway address to communicate with. This document describes the configuration of Ethernet services, including configuring MAC address table, link aggregation, VLANs, VLAN aggregation, MUX VLAN, VLAN termination, Voice VLAN, VLAN mapping, QinQ, GVRP, VCMP, STP/RSTP/MSTP, VBST, SEP, RRPP, ERPS, LBDT, and Layer 2 protocol transparent. This chapter covers the design recommendations for a data center design deployment consisting of a Cisco Nexus® 7000 Series Switch at the aggregation layer and a Cisco Nexus 5000 Series Switch at the access layer. In this deployment the Aggregation switch will have dual purposes, providing power and layer 2 access to wired devices and access points, while also aggregating downstream aggregation switches. My plan was to have my three switches use all four of the 10Gb uplink ports to a fourth "aggregator switch" so that I'd have the necessary bandwidth for a total of 12 10Gb links to the aggregator.



## VLANs of the aggregation switch

---



### 01-05 VLAN AGGREGATION CONFIGURATION

VLAN aggregation, also called super-VLAN, partitions a broadcast domain on a physical network into multiple VLANs (sub-VLANs) and aggregates them into a single logical VLAN (super-VLAN).

[Contact Us](#)

### VLAN Aggregation Configuration

S1720, S2700, S5700, and S6720 V200R011C10 Configuration Guide - Ethernet Switching This document describes the configuration of Ethernet services, including configuring link aggregation,

[Contact Us](#)



### What is Switch Aggregation, Its Role and Selection Advice

This article wraps up "what is switch aggregation" and suggestions for choosing an aggregation switch. By considering these factors, network administrators can make informed

[Contact Us](#)

### Aggregation Layer

VLANs are L2 based, so for the sake of scalability, they are normally implemented between the aggregation-and access-layer switches, as illustrated in Figure 3.7. In fact, the L2 segmentation

[Contact Us](#)



### Example for Configuring VLAN Aggregation

Configure VLAN aggregation on Switch B to add VLANs of different departments to a super-VLAN so that PCs in different departments can access the Internet using the super-VLAN.

[Contact Us](#)



### What Is an Aggregation Switch and How to Choose?

An aggregation switch is a network device that consolidates traffic from multiple access switches, wireless access points, or other edge devices and forwards it to

[Contact Us](#)



### VLAN aggregation

Hi, please, how do I do VLAN aggregation on Cisco 6500 ? (to use the IP subnet on different VLANs). Thank, Cleber

[Contact Us](#)

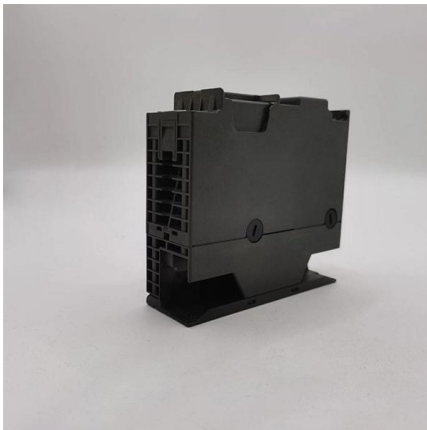
### What is Link Aggregation (LAG) in



## Networking?

Link aggregation is a technique used in networking to bundle multiple physical ports on a network device to operate as a single link. The aggregated link acts as a

[Contact Us](#)



## How To Set Up Switch Link Aggregation

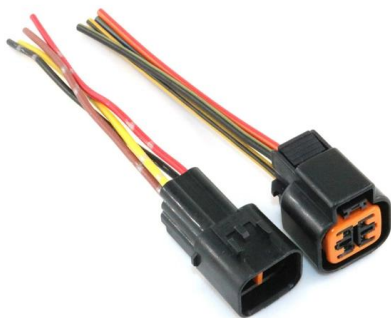
Managed switches provide many advantages for a growing network, including support for VLANs, QoS, and Trunking. I touched on simple VLAN configuration a

[Contact Us](#)

## Understanding VLAN Aggregation

VLAN aggregation allows the switch to assign IP addresses to hosts in sub-VLANs according to the actual number of hosts. For example, if sub-VLAN 2 contains only 10 hosts, the switch allocates IP

[Contact Us](#)



## Link Aggregation: What is it, and How Does it Work?

Link aggregation is a way of bundling a bunch of individual (Ethernet) links together so they act as a single logical link. A fundamental for effective

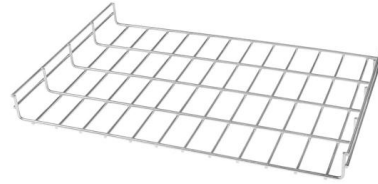
[Contact Us](#)



## VLAN Aggregation Configuration

VLAN aggregation, also called super-VLAN, partitions a broadcast domain on a physical network into multiple VLANs (sub-VLANs) and aggregates them into a single logical VLAN (super-VLAN).

[Contact Us](#)



## Understanding VLAN Aggregation

VLAN aggregation allows sub-VLANs to share the same Layer 3 interface, thereby conserving subnet numbers, default gateway addresses, and directed broadcast addresses of subnets. It also allows

[Contact Us](#)

## Understanding VLAN Aggregation

S1720, S2700, S5700, and S6720 V200R011C10 Configuration Guide - Ethernet Switching This document describes the configuration of Ethernet services, including configuring link aggregation,

[Contact Us](#)



## Understanding Switch Aggregation: A Comprehensive

QSFPTEK: How to Choose the Best Aggregation Switch?: This source provides a comprehensive guide on choosing the best aggregation switch,

[Contact Us](#)



## Data Center Aggregation Layer Design and Configuration with

Introduction This chapter covers the design recommendations for a data center design deployment consisting of a Cisco Nexus® 7000 Series Switch at the aggregation layer and a Cisco Nexus 5000

[Contact Us](#)



## Medium Branch Switch Configuration

this section of the guide will demonstrate how to configure a Aggregation switch with dual purposes, providing power and layer 2 access to

[Contact Us](#)

## Example for Configuring VLAN Aggregation

You can configure VLAN aggregation on the switch to isolate VLAN 2 from VLAN 3 at Layer 2 and allow them to communicate at Layer 3. VLAN 2 and VLAN 3 use the same subnet segment, saving IP

[Contact Us](#)



## VLAN Aggregation Configuration Commands

Generally, a Layer 3 switch usually uses a Layer 3 logical interface in each VLAN to allow user hosts in different broadcast domains to communicate. This wastes IP addresses. The VLAN aggregation

[Contact Us](#)

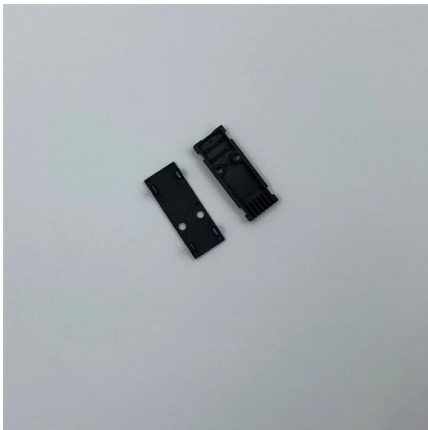
## Data Center Aggregation Layer Design and



## Configuration with

This chapter covers the design recommendations for a data center design deployment consisting of a Cisco Nexus® 7000 Series Switch at the aggregation layer and a Cisco Nexus 5000 Series Switch at

[Contact Us](#)



## Everything You Need to Know About Aggregation Switch

Configuring VLANs on Aggregation Switch for Efficient Traffic Management Virtual LANs (VLANs) segment the network into smaller groups for

[Contact Us](#)

## What Is an Aggregation Switch and How to Choose?

Discover the role of aggregation switches. Explore differences between aggregation, access, and core switches, and choose the right model for

[Contact Us](#)



## vlan

How does link aggregation work in reality? I'm concerned that I'm misunderstanding how aggregators work in the scenario below: I have a project where I need 40 Gbps links between switches.

[Contact Us](#)



## Contact Us

---

For datasheets, pricing, or custom fiber access solutions, please visit:  
<https://www.frindel.es>