

# Uzbekistan Laser Diode Circuit Diagram



IP65/IP55 OUTDOOR CABINET

OUTDOOR MODULE CABINET

OUTDOOR ENERGY STORAGE CABINET

19 INCH





## Uzbekistan Laser Diode Circuit Diagram

---



### Precision Method for Laser Diode Emission Control

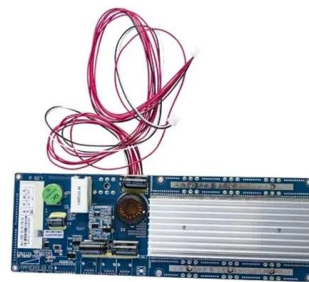
Figure 1 shows a block diagram of such a system. A silicon photodiode is constructed in a similar way to PN junction diodes except that the P layer is very thin. The thickness of the P layer is adjusted for the

[Contact Us](#)

### Laser Diode: The Ultimate Beginner's Guide

A laser diode needs a driver circuit to work properly, and the driver circuit needs to give the laser a constant current. Below you'll find a simple

[Contact Us](#)



### Laser Diode Schematic Diagram

A laser diode schematic diagram is a visual representation of how electrical components are connected and interact with one another in a laser

[Contact Us](#)

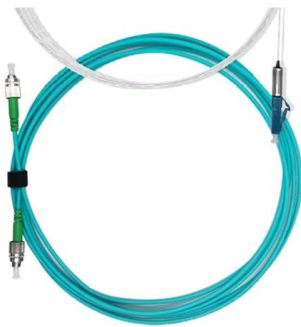


### Laser Diode : Construction, Types, Working & Its

Laser diodes need complex drive circuits which use feedback loops to measure temperature, input current, o/p optical power & voltage. The circuit



- 50KW/100KWH
- HIGHER POWER OUTPUT IN OFF-GRID MODE
- CONVENIENT OPERATION & MAINTENANCE
- PRE-WIRED



### Laser Diode Technology 101: What is it & How it Works

The laser diode symbol used for circuit diagrams is often the same one used for light emitting diodes. Although the use of the same circuit symbol for laser diodes and

[Contact Us](#)

### Circuit Diagram Of Laser Diode

The circuit diagram of a laser diode is a highly complex but fascinating setup. Understanding the intricacies of a laser diode circuit can open

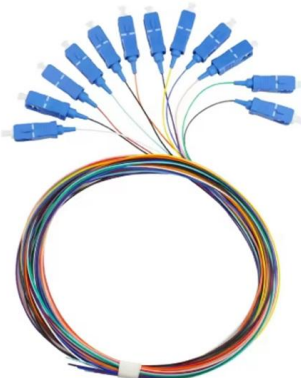
[Contact Us](#)



### Laser Diode Characteristics, Precautions for Use and Drive Circuit

Laser diodes (LD) are semiconductor devices that convert electrical energy into high-power optical energy. These devices are currently used in the fields of telecommunications and medicine and in

[Contact Us](#)





## Laser Diode: The Ultimate Beginner's Guide

This is the ultimate beginner's guide to the laser diode. Learn how lasers work and how you can use them in your own projects with this guide.

[Contact Us](#)



### Driving circuit examples of laser diodes

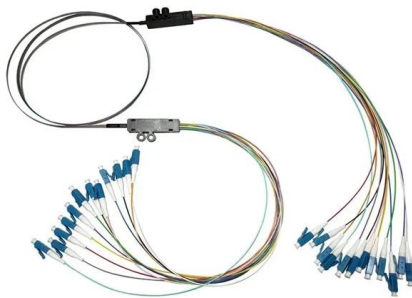
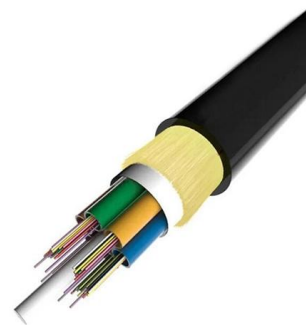
Auto Power Control drive circuit example for N type LDs (without Op-amp.) The voltage between A-B will be the one between the base-emitter of the transistor. (It's about 0.55V in the case of an upper figure.)

[Contact Us](#)

### Laser Diode Driver Circuit Diagram

A Laser Diode driver circuit is a circuit which is used to limit the current and then supplies to the Laser Diode, so it can work properly. If we

[Contact Us](#)



### Laser Diode Driver

We can use a voltage-controlled current source to implement a laser diode driver. Compared with a Switched (PWM) drivers, this simple linear laser diode driver

[Contact Us](#)



## Schematic Diagram Laser Diode

The laser diode can be an intimidating prospect for those who are unfamiliar with the technology. Fortunately, a schematic diagram of a laser diode

[Contact Us](#)



## Laser Diode Driver Circuit Setup and Connection Guide

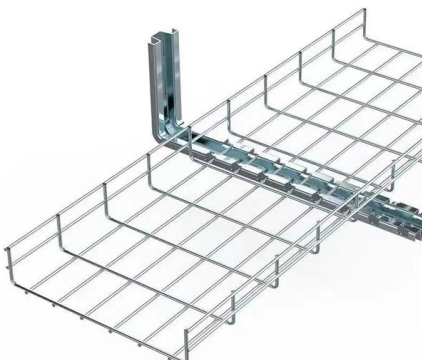
Step-by-step guide to setting up a laser diode driver circuit with detailed connections, component roles, and safety tips for stable operation and reliable performance

[Contact Us](#)

## Laser Diode

What is a Laser Diode? The term LASER stands for Light Amplification by Stimulated Emission of Radiation. A laser diode is a

[Contact Us](#)



## Laser Diode Tutorial

The purpose of this laser diode tutorial is to provide the information necessary to create a long lifetime, stable laser diode system. Much of what will be discussed will be in general terms of laser diode

[Contact Us](#)



## How to Use Laser Diode: Examples, Pinouts, and Specs

Learn how to use the Laser Diode with detailed documentation, including pinouts, usage guides, and example projects. Perfect for students, hobbyists, and

[Contact Us](#)



## Laser diode representation on circuit diagrams

Learn about the schematic symbol for a laser diode and how it is represented in electronic circuit diagrams.

[Contact Us](#)

## Laser Diode Driver Circuit Diagram

A laser diode driver circuit, or regulator, is responsible for controlling the current supplied to the laser diode in order to ensure it operates as desired.

[Contact Us](#)



## Laser Diode

A semiconductor device that generates coherent light of high intensity is known as laser diode. LASER is an acronym for Light Amplification by Stimulated Emission

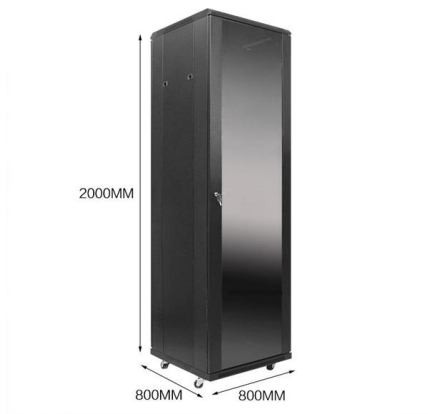
[Contact Us](#)

## Laser Diode Circuit Design



Furthermore, laser diode circuit design saves energy by reducing electrical loads on the power grid, which ultimately results in lower electricity bills. In addition, laser diode circuit design

[Contact Us](#)



### Laser Diodes Explained: From Light Source to Everyday

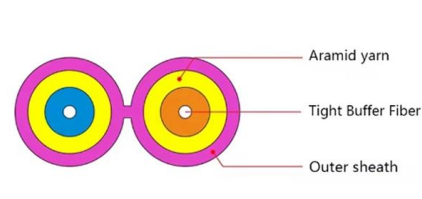
Unlock the secrets of laser diodes! Explore how they work, their construction, different types, and surprising uses in everyday tech - from CD

[Contact Us](#)

### Laser Diode Basics , Springer Nature Link

Laser diode vendors offer a wide selection of laser diodes, collimating lenses, and some selections of circuit boards for the users to choose from. Sometimes, they can assemble the modules

[Contact Us](#)



### simplified electrical circuit diagram for laser diode

Download scientific diagram , simplified electrical circuit diagram for laser diode package (dashed square) with coupling capacitor C, matching resistor R M, RF

[Contact Us](#)



## Laser Diode

The emitted radiation from a laser diode is typically coherent, monochromatic, and directional, making it ideal for high-speed optical

[Contact Us](#)



### LASER Diode Driver Circuit

Introduction Laser is not a thing that needs a specific introduction. It has a vast use in various industries. If you are a student or do document-related work, you might see lasers in printers;

[Contact Us](#)

## Contact Us

For datasheets, pricing, or custom fiber access solutions, please visit:  
<https://www.frindel.es>

Ordering information

NO.	1	2	3	4	5	6
Model	SP1201	SP1202	SP1604	SP1605	SP1202	SP1204
Product name	Patch Panel	Patch Panel	Patch Panel	Patch Panel	Patch Panel	Patch Panel
Illustration						
HU	1	2	4	1	2	4
Maximum number of cores	144	288	576	144	288	576
Product size (including module and adapter)	482.67*317.744 mm	482.67*317.788.1 mm	482.67*317.1137 mm	482.67*317.744 mm	482.67*317.788.1 mm	482.67*317.1137 mm
Standard color code	RAL9005	RAL9005	RAL9005	RAL9005	RAL9005	RAL9005

### Laser Circuit Diagram

Here's a closer look at what laser circuit diagrams are and why they're so important. A laser circuit diagram is a map of the components in a laser

[Contact Us](#)

