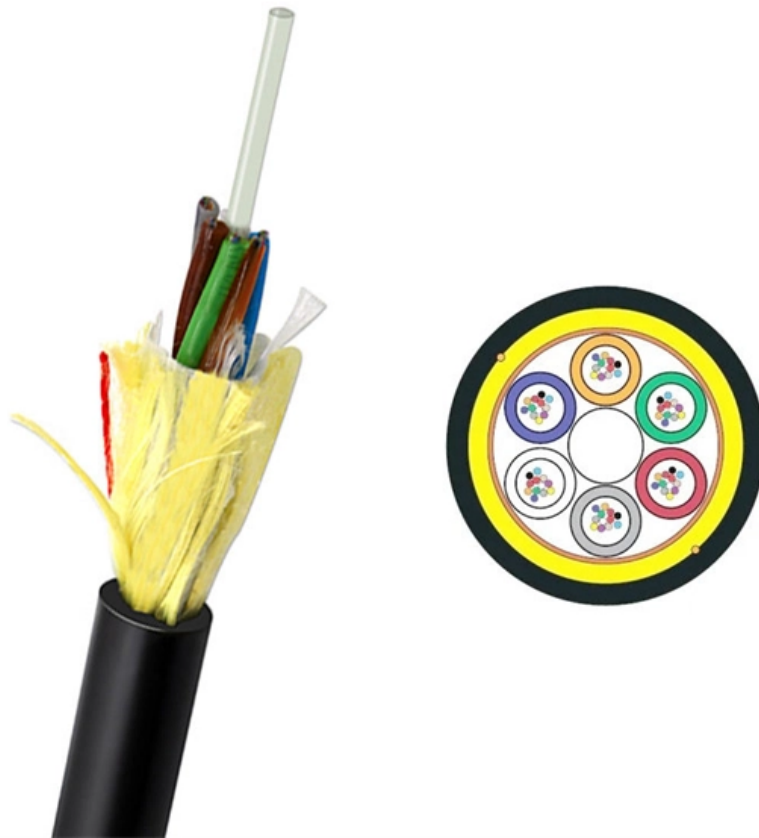


# Uplink attenuation of $2n$ beam splitter





## Uplink attenuation of 2n beam splitter

---



### DTS0095

Both 1XN and 2XN splitters can be constructed in this fashion with as many as eight or more outputs, with both low return losses and low insertion losses. This design is extremely flexible, allowing one to

[Contact Us](#)



### What are Beamsplitters?

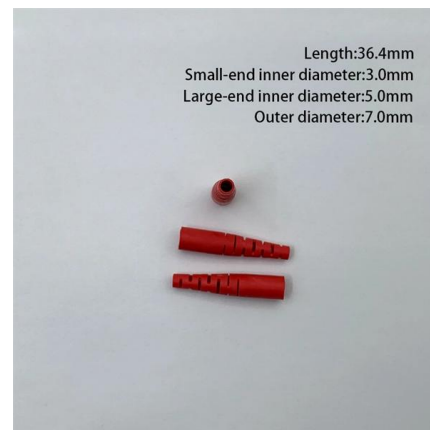
Options range from laser beam combiners designed for specific laser wavelengths to broadband hot and cold mirrors for splitting visible and infrared light. This type of

[Contact Us](#)

### Pulse Simulation Generation

Highlights simulation of high-NA diffractive optical elements including rigorous efficiency calculation using beam splitter designs in more complex optical systems including higher order stray light

[Contact Us](#)



### Beam-based uplink multi-user detection for mmWave communications

In this paper, we investigate the beam-domain uplink MU detection for multi-cellular mmWave communications. In , under a single cell setting, Choi studied the uplink MU signal detection for a

[Contact Us](#)



### **Quantum entanglement and statistics of photons on a beam splitter in**

All this suggests that a frequency-dependent beam splitter based on coupled waveguides can be used as a source of large quantum entanglement of photons.

[Contact Us](#)



### **Multi-Beam UAV Communication in Cellular Uplink: Cooperative**

To resolve the above fundamental trade-off in cellular-enabled UAV communication, we consider in this paper a new multi-beam UAV communication scenario in the cellular uplink, as shown in Fig. 1,

[Contact Us](#)



### **Inter-Beam Co-Channel Downlink and Uplink**

This paper presents a methodology for assessing co-channel interference that arises in multi-beam transmitting and receiving antennas used in

[Contact Us](#)





## Highly Integrated Multibeam Beamformers Offer SWaP

Traditionally, a discrete approach may have been possible using transmission lines for time delays, beam steering using phase shifters/digital step attenuators or

[Contact Us](#)



## 2000nm 2x2 Polarization Beam Combiner/Splitter

The 2000nm Polarization Beam Combiner/Splitter can be used either as a polarization beam combiner to combine light beams from two PM input fibers into

[Contact Us](#)

## Mastering Polarizing Beam Splitters

Unlock the potential of polarizing beam splitters in optical design with our in-depth guide, covering principles, applications, and best practices.

[Contact Us](#)



## Microsoft Word

It is therefore crucial to design for all possible attenuation scenarios before the satellite is deployed. This paper presents the rudiments of a satellite link design in a tutorial form with

[Contact Us](#)



### Beam Splitters -- Abridged Guide

Quick-reference guide for beam splitters -- key equations, type comparison tables, Fresnel reflectance, polarizing designs, and a practical selection workflow. Condensed from the comprehensive guide.

[Contact Us](#)



### WHITE PAPER 5G Uplink Enhancement Techniques

2. 5G Uplink Challenges and Enhancement Techniques Since 3GPP Release 15 specifications were first published there were certain challenges that uplink performance had to deal with. Firstly, 5G

[Contact Us](#)



### Beam Splitter Input-Output Relations

The elements of the beam splitter transformation matrix  $B$  are determined using the assumption that the beamsplitter is lossless. While a beamsplitter is never lossless, it is a good approximation for most

[Contact Us](#)



### What Is an Optical Splitter?

What's an optical splitter? How does the fiber optic splitter work? How many fiber splitter types? How to choose the right fiber splitter? Find the answers

[Contact Us](#)



## Passive Optical Network (PON): Attenuation and

In the PON (Passive Optical Network) system, calculating optical attenuation and transmission distance can be a tricky thing to deploy FTTH.

[Contact Us](#)



## Polarizing beam splitter based on a double-layer subwavelength grating

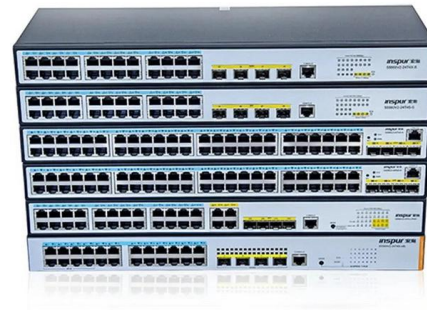
Polarizing beam splitters (PBSs) can split an incident beam into two orthogonally polarized beams, which are widely applied in various optical systems, such as optical information processing,

[Contact Us](#)

## Lecture9: The lossless beam splitter Lec

probabilities add themselves up. In case of a symmetric beam splitter, we can visualise the possible paths that the two photons can take (see Fig. 14). The two photons, here labelled in green and red

[Contact Us](#)



## Beam Splitter , Precision, Applications & Design Principles

Explore the precision, applications, and design principles of beam splitters, essential for advancements in scientific research and technology.

[Contact Us](#)



**2022-04-06 Pul**

Our 8x pulse splitter is conceptually similar to Fig. S3c of Ji et al. (2008), with trivial adaptations. It can also be interpreted as a 4x splitter further expanded by 2x, resulting in an 8x split. Note that our

[Contact Us](#)



### **Bunching of Photons When Two Beams Pass Through a Beam Splitter**

We give a classical argument based on a Mach-Zehnder interferometer, shown in the figure below, that there is a 90 phase shift between the reflected and transmitted beams in a lossless, symmetric beam

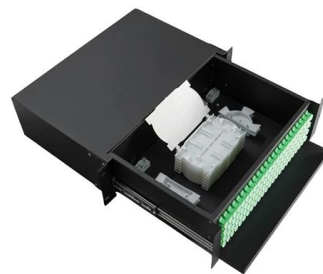
[Contact Us](#)



### **Covering the Basics of Beamsplitters -- Firebird Optics**

Polarizing Beamsplitter While standard non-polarizing beamsplitters divide light by wavelength, a polarizing beamsplitter will split the incident beam

[Contact Us](#)



### **Design and Optimization of a Compact Ultra-Broadband**

In this paper, we present the design and optimization analysis of an ultra-broadband polarization beam splitter based on a thick silicon nitride platform

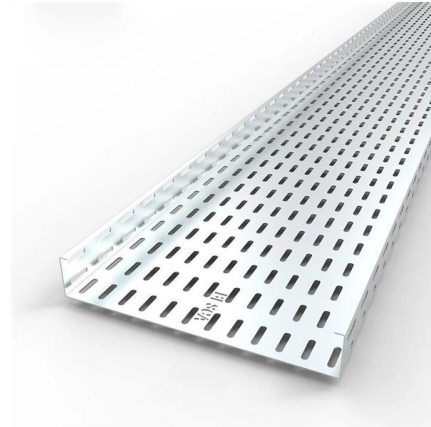
[Contact Us](#)



## Beam Splitters - optical power splitter, beamsplitter, thin

Beam splitters are devices for splitting a laser beam into two or more beams. There are different types, including polarizing and non-polarizing versions.

[Contact Us](#)



## Inter-Beam Co-Channel Downlink and Uplink

This paper presents a methodology for assessing co-channel interference that arises in multi-beam transmitting and receiving antennas used in fifth-generation (5G)

[Contact Us](#)

## RLTECH PON (PON Line Indicators and Split Ratio Design)

PON line design requires comprehensive consideration of optical power budget, split ratio, transmission distance, and scenario demands?13. RLTECH provides stable PON solutions,

[Contact Us](#)



## Transmission and Reflection by Beamsplitters

In addition to the task of dividing light, beamsplitters can be employed to recombine two separate light beams or images into a single path. This interactive tutorial

[Contact Us](#)



## Multi-layer beamforming in uplink/downlink massive MIMO Systems

In the uplink transmission, designing precoders at users based on the low dimensional effective channels, we shaped narrow beams towards the BS which results in interference reduction

[Contact Us](#)



## Contact Us

---

For datasheets, pricing, or custom fiber access solutions, please visit:  
<https://www.frindel.es>