

UK Lighting Distribution Box Specifications





Overview

Specifications Input: 1x CEE male 3P+N+PE, 400VAC, 50/60Hz Output: 6x CEE female 1P+N+PE, 230VAC, 50/60Hz (back) 1x CEE female 1P+N+PE, 230VAC, 50/60Hz (front) MCB (3pcs) Rated Current: 16A Tripping Curve: C-type Poles: 1P Breaking Capacity: 6KA Physical Color: Dark. Use to control 2 groups of luminaires independently of each other (same circuit, separate control) or to control 2 individual circuits of luminaires (2 protective devices at the distribution board (s) - must be the same phase). Our new range of Lighting Distribution Units are designed & manufactured in the UK. With four 7-pole outlets, it supports both standard on/off and dimming control applications. Klik marshalling boxes are used in conjunction with Klik 3 and 4 pin plugs to connect luminaires within an area.



UK Lighting Distribution Box Specifications



Mains

Synapse 4 functions as an intelligent relay pack to control the power sent to individual lighting units. Synapse 4 can de-power entire sections of an installation,

[Contact Us](#)

Hager KLDS10 , Klik Marshalling Box 10 Way 4 Pole Lighting

KLDS10 is a 10 way Lighting Distribution Box, making what used to be a time consuming task very quick and simple. The main terminals are rated at 16A and each socket outlet is rated at 6A each.

[Contact Us](#)



Klik 12 Way Marshalling Lighting Distribution Box

Klik KLDS12 Lighting Distribution Marshalling Box
The Klik KLDS connector system is a modular plug and socket system that allows a simultaneous mechanical and

[Contact Us](#)



Specification 034. Electrical Installations

Foreword This Specification is one of a series prepared by Defence Estates (DE) an agency of the Ministry of Defence (MOD) primarily for use in its contracts for mechanical and electrical engineering



LIGHTING DISTRIBUTION UNITS

The Olson range of Lighting Distribution Units are designed & manufactured in the UK. Constructed from Zintec steel and powder coated in white RAL9010.

[Contact Us](#)



Hager Klik KLDS10 10 Way Lighting Distribution Unit/Marshalling Box

The Klik KLDS10 is a 10 Way Lighting Distribution Box and it makes what used to be a time consuming task very quick and simple. The main terminals are rated at 16A and each socket outlet is rated at 6A

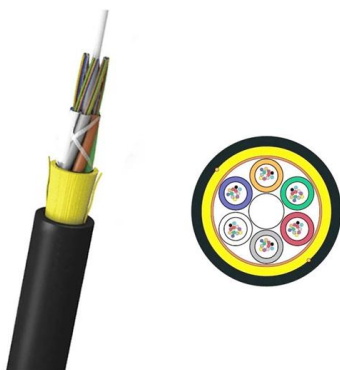
[Contact Us](#)



Specification 034. Electrical Installations

Specification 034 Foreword This Specification is one of a series prepared by Defence Estates (DE) an agency of the Ministry of Defence (MOD) primarily for use in its contracts for mechanical and electrical

[Contact Us](#)





Distribution boxes , Part of the RP Productions Group.

POWER DISTRIBUTION 400A TPNE POWERLOCK IN, 2 X 125A TPNE, 2 X 63A TPNE OUT MCB PROTECTED £75 Per Week (ex VAT) 200A TPNE CAMLOCK IN, 4 X 63A TPNE OUT, MCB

[Contact Us](#)



Hager KLIK Lighting Distribution Units , ExpertElectrical .uk

Hager KLIK Lighting Distribution Units
Key Features
Available in socket outlets options:- 4 Way- 6 Way- 8 Way- 10 Way- 12 Way
IP rating: IP20
Complies with BS 5733
Material: Plastic/metal
Rated operational

[Contact Us](#)

Business Documentation (DBD)

Where rooms within the substation contain electrical apparatus (other than the heating, lighting etc. that is the subject of this specification) or other items which require protection from low temperatures

[Contact Us](#)



High-Quality Electrical Lighting Distribution Boxes Explained

These versatile components are essential for ensuring safe and efficient operation of lighting installations in diverse settings, from street lighting to commercial buildings. In this comprehensive guide, we'll

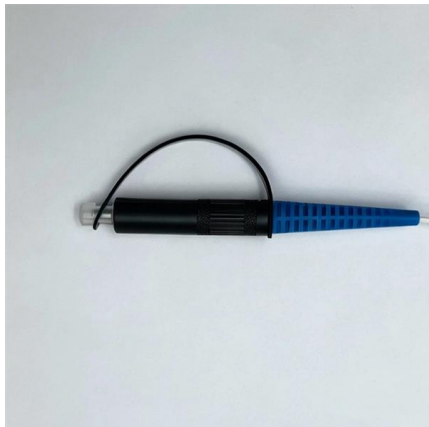
[Contact Us](#)



Flex Connectors FSU04 Flex7 4 Way 7-Pole Lighting

4-Way 7-Pole eZeBox Starter Unit - Lighting/Power Distribution Box, 16A 230V This 4-way eZeBox starter unit is a compact, high-performance lighting and power

[Contact Us](#)



TECHNICAL SPECIFICATION FOR DISTRIBUTION BOARDS & LIGHTING

TECHNICAL SPECIFICATION FOR DISTRIBUTION BOARDS & LIGHTING PANELS SPECIFICATION NO. PE-TS-434-558-E002 VOLUME II SECTION - I

[Contact Us](#)

Outlet & Marshalling Boxes , YESSS Electrical

Popular technical specifications include multiple outlet configurations, pre-wired or configurable designs, compatibility with Klik plug systems, and compliance with relevant wiring standards. For efficient

[Contact Us](#)



Flex Connectors FSU04 Flex7 4 Way 7-Pole Lighting

With four 7-pole outlets, it supports both standard on/off and dimming control

[Contact Us](#)





KLDS10 Hager 10 Way Klik Lighting Distribution Unit

Klik marshalling boxes are used in conjunction with Klik 3 and 4 pin plugs to connect luminaires within an area. The Klik marshalling box can be separated into two independently switched circuits. These

[Contact Us](#)



flex7 Lighting Distribution Boxes

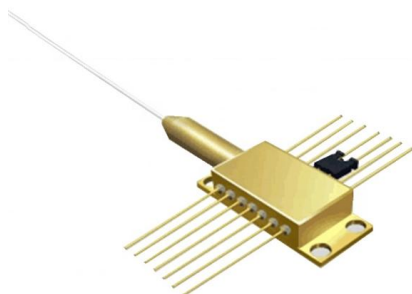
At the very core of its design our Lighting Distribution Box fulfils the requirements of BS 5733. It's a longstanding, onerous British Standard written to ensure devices

[Contact Us](#)

MNS® Low Voltage Distribution Board and Power Cabinet

Features ABB distribution board and power Cabinet conform to GB7251.3-2006. Product includes distribution board, lighting control panel, metering panel, and power cabinet., They are suitable for

[Contact Us](#)



Distribution Box Specs

It performs well in wet locations with the water-proof rating of IP66. With the maximum carrying capacity of 6000W, it can be applied to high mast lighting system combined with outdoor lighting fixtures such

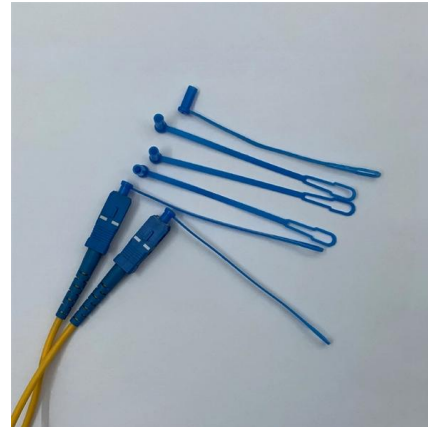
[Contact Us](#)



Dual Control/Supply Lighting Distribution Box

Regardless of application, these Distribution Boxes support standard (on/off) or dimmable lighting control in emergency or non-emergency versions. Controls 2

[Contact Us](#)



Klik Lighting Distribution Boxes

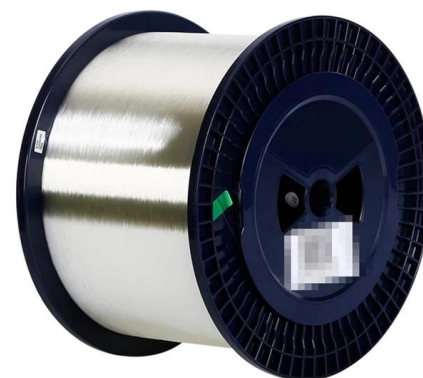
Klik Lighting Distribution Boxes Klik marshalling boxes are used in conjunction with Klik 3 and 4 pin plugs to connect luminaires within an area. The Klik marshalling box can be separated into two

[Contact Us](#)

Dual Control/Supply Lighting Distribution Box

Dual Control/Supply Lighting Distribution Box Use to control 2 groups of luminaires independently of each other (same circuit, separate control) or to control 2

[Contact Us](#)



Length:14.5mm
 Small-end inner diameter:2.0mm
 Large-end inner diameter:3.5mm
 Outer diameter:5.2mm



Hager Klik 6 Way Lighting Distribution Unit , Lighting

Hager Klik 6 Way Lighting Distribution Unit KLDS6 The Klik Lighting management system from Hager. speeds up a previously very time consuming job. by making

[Contact Us](#)

Olson 8 Way Lighting Distribution Unit (LDU-08) , CEF



Home > Lighting Luminaires > Lighting Controls
> Marshalling Boxes > 8 Way Lighting
Distribution Unit

[Contact Us](#)



Contact Us

For datasheets, pricing, or custom fiber access solutions, please visit:
<https://www.frindel.es>