

Two-port optical module



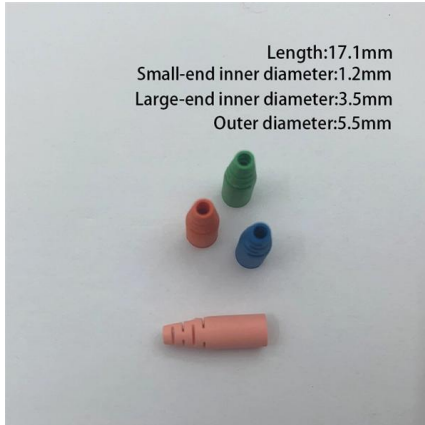


Overview

An optical module is a typically hot-pluggable optical transceiver used in high-bandwidth data communications applications. Electrical Interface Types There have been multiple variants of the electrical interface of optical modules that have been used over the years.



Two-port optical module



BCM957414N4140C Data Sheet

The Broadcom® BCM957414N4140C is a dual-port 25 Gb/s PCI Express 3.0 x8 network adapter designed to the Open Compute Project (OCP) 3.0 Design Specification in small form factor with two

[Contact Us](#)

Siemens SIMATIC 6GK15032CB00 PROFIBUS Optical

SIMATIC NET, PB OLM/G11 V4.0 OPTICAL LINK MODULE W. 1 RS485 AND 1 GLASS-FOC-INTERFACE (2 BFOC-SOCKETS) WITH SIGNAL CONTACT AND

[Contact Us](#)



1G2 Series: Open SFP Port, Gigabit, 2 Ethernet Ports,

The American Fibertek 1G2 Media Converter Series transmits and receives a 10/100/1000Base-T Ethernet signal at two RJ45 ports and a 100 Base-FX or

[Contact Us](#)

Optical breakout solution for Nokia

The solution breaks out high-speed optical connectors into lower-speed ports, allowing operators to maximize interface density and bandwidth utilization on the host Nokia platform while minimizing the



Small Form-factor Pluggable

Small Form-factor Pluggable Small Form-factor Pluggable connected to a pair of fiber-optic cables Small Form-factor Pluggable (SFP) is a compact, hot-pluggable

[Contact Us](#)



GIGALIGHT Launches Dual-Density 100G SFP56-DD SR2 Optical

Dual-density SFP56-DD optical modules are becoming an important option for next-generation high-performance switching and interconnect architectures. GIGALIGHT introduces the

[Contact Us](#)



Exploring the LINK-PP 2.5G SFP Transceiver: Your Ultimate Guide to

2.5G optical modules boost network speed, simplify upgrades, and cut costs with easy installation and broad compatibility for modern networks.

[Contact Us](#)





What Is an SFP Module? Complete Guide

SFP modules, or Small Form-factor Pluggable modules, are essentially the workhorses of modern networking. They facilitate data

[Contact Us](#)



800GBASE 2 x FR4 OSFP Finned Top PAM4 1310nm 2km DOM Dual

The 800GBASE 2x FR4 OSFP optical transceiver module is designed for 800GBASE Ethernet throughput up to 2km link lengths over OS2 single-mode fibre (SMF) via dual duplex LC/UPC

[Contact Us](#)



Campus Switches RG-SF2920-16GT2SFP 16-Port GE All-Optical Switch, 2

RG-SF2920-16GT2SFP 16-Port GE All-Optical Switch, 2 × Gigabit Uplink Optical Ports Various port combinations, rate increase, installation in a concealed telecommunication box, recommended for

[Contact Us](#)



2X10GL (2-Port 10GE Optical Ports Interface Card)

2X10GL (2-Port 10GE Optical Ports Interface Card) Card Overview The 2X10GL is a high-speed WAN access module that provides two 10GE optical interfaces for high-speed uplink connection. A

[Contact Us](#)





Everything You Need to Know About Optical Modules

Optical modules are electronic devices used in communication systems to transmit optical signals. These modules convert electrical signals into optical

[Contact Us](#)



What Is A Single-Fiber BiDi Transceiver?--ETU-LINK

Single fiber module also called BiDi transceiver or WDM module. It uses WDM technology to realize the bidirectional transmission of optical signals on one

[Contact Us](#)



What Is A Single-Fiber BiDi Transceiver?--ETU-LINK

Dual fiber module has two ports, TX is transmitting port, RX is receiving port. Both transmitting and receiving needs one optical fiber, so it requires two fibers for a

[Contact Us](#)



Dahua GSFP-850-MMF Gigabit Optical Module

Ensure fast, reliable data transfer with the Dahua GSFP-850-MMF, a gigabit optical module using LC ports and multi-mode fiber up to 550 m.

[Contact Us](#)



The Difference Between Single/Dual Fiber and

As fiber optic networks continue to evolve, selecting the right optical transceiver becomes increasingly important. Whether you're designing a short

[Contact Us](#)



Optical Distribution Frames (ODF)

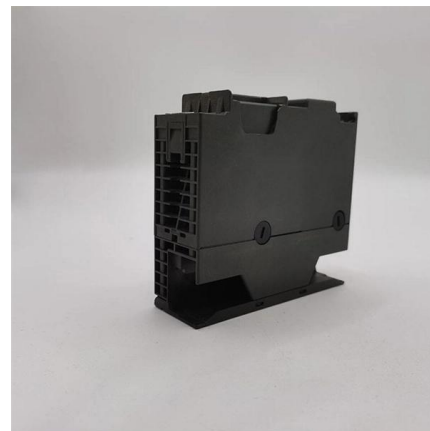
Fiber cable termination unit (1) Fiber cabled module (77) Fiber module (62) Fiber optic terminal jumper storage panel (1) Fiber patch block (71) Fiber patch block, with IFC cable (14) Fiber patch cabinet

[Contact Us](#)

ES5D21X02S00 (2-Port GE SFP/10GE SFP+ Rear Optical Interface)

The ES5D21X02S00 provides two 10GE SFP+ optical ports for data access and line-rate switching. It can be installed in a card slot of the switch models listed in Table 9-66.

[Contact Us](#)



Optical module

Optical modules can either plug into a front panel socket or an on-board socket. Sometimes the optical module is replaced by an electrical interface module that implements either an active or passive

[Contact Us](#)



Huawei H802X2CS MA5600T 10GE/GE Uplink Board

Buy Huawei MA5680T MA5683T 2-port 10GE/GE uplink board H802X2CS, configure H802X2CS with 10km 40km 80km SFP+ optical module, download H802X2CS

[Contact Us](#)



The Most Comprehensive Guide Of Optical Modules

Explore the ultimate guide to optical modules. Learn types, functions, performance metrics & how to choose the right module for your fiber network.

[Contact Us](#)

Dahuasecurity

Hier sollte eine Beschreibung angezeigt werden, diese Seite lässt dies jedoch nicht zu.

[Contact Us](#)



Hewlett Packard Enterprise 5930 24-Port Converged Sfp+ / 2-Port

5930 24-port Converged SFP+ / 2-port QSFP+ Module Hewlett Packard Enterprise 5930 24-port Converged SFP+ / 2-port QSFP+ Module. Fiber optic connector: QSFP+,SFP+. Media types

[Contact Us](#)



10 Gigabit Fiber SFP+ Optical Transceiver Module

Intellinet Network Solutions 10GBase-LR Fiber SFP+ Optical Transceiver Module, model 507479, is the right choice when it comes to connecting two buildings at 10

[Contact Us](#)



Co-Packaged Optics (CPO) Co-Packaged Optics (CPO)

Traditional pluggable optical modules are increasingly constrained by signal loss, power consumption, and latency because they require long electrical traces

[Contact Us](#)

Gigabit 2-port single-mode dual fiber media converter

It has 1*10/100/1000Base-T RJ45 port and 1*1.25G uplink SFP fiber port. Users can select different optical modules, such as multi-mode dual fiber, single-mode dual

[Contact Us](#)



SFP series

It has been designed to withstand the maximum range of external operating conditions including temperature, humidity and EMI. The module offers very high functionality and feature

[Contact Us](#)



Contact Us

For datasheets, pricing, or custom fiber access solutions, please visit:
<https://www.frindel.es>