

# Two optical module interfaces





## Overview

---

In BiDi optical modules, SC (Subscriber Connector) and LC (Lucent Connector) are common fiber interface types. While they share the same functionality, they differ significantly in their physical structure, connection methods, and deployment scenarios. Optical modules typically have an electrical interface on the side that connects to the inside of the system and an optical interface on the side that connects to the outside. Whether you are creating a 100-Gbps or 400-Gbps, small form-factor pluggable (SFP) module, SFP+ transceiver, XFP module, CFP, X2/XENPAK module. On an optical network, a sender needs to convert electrical signals into optical signals before sending them to a receiver, and the receiver needs to convert received optical signals into electrical signals. Operating at the physical layer of the OSI model, optical modules are core devices in optical.



## Two optical module interfaces

---



### Differences Between Optical Modules SFP, SFP+, CFP, XFP, QSFP

Until 2000, GBIC was the most popular optical module package and the most widely used form of Gigabit module. GBIC is an interface device that converts Gigabit electrical signals into optical

[Contact Us](#)

### Understanding the OSFP Standard: The Open 400G/800G Optical

A two-wire I<sup>2</sup>C management interface (compatible with SFF-8636) This design ensures efficient electrical signal integrity and robust host-module communication even at high lane rates. 2

[Contact Us](#)



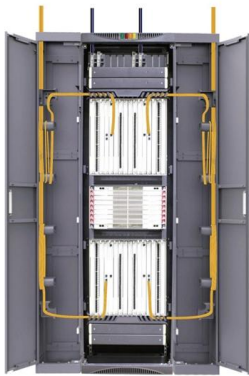
### Broadcom Sian3 and Sian2M: 200G/lane optical

Analyzing Broadcom's Sian3 and Sian2M 200G/lane DSP technologies. Sian3 (3nm/SMF) and Sian2M (5nm/MMF) support 800G and 1.6T

[Contact Us](#)

### The Most Comprehensive Guide Of Optical Modules

Explore the ultimate guide to optical modules. Learn types, functions, performance metrics & how to choose the right module for your fiber network.



### QSFP-DD Optical Module Overview: What is the differ?

The "double density" in this standard means that the number of high-speed electrical interfaces of this module is twice that of the standard QSFP28

[Contact Us](#)

### Wiley Online Library , Scientific research articles, journals, books

Hier sollte eine Beschreibung angezeigt werden, diese Seite lässt dies jedoch nicht zu.

[Contact Us](#)



### Audio Science Review (ASR) Forum

DACs, Streamers, Servers, Players, Audio Interface Review, measurements and discussion of the science behind digital audio and its performance.

[Contact Us](#)



## Common Optical Modules and Interfaces for Switches

Common optical module types such as SFP, GBIC, XFP, and XENPAK, along with optical interfaces like FC, SC, and LC, each have their unique characteristics that make them suitable for

[Contact Us](#)



## Mastering Cisco Optics: Understanding TX/RX Light Levels

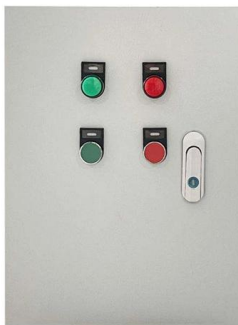
Stop guessing your fiber health. Discover how to use Cisco DOM commands to measure real-time TX/RX light levels and ensure your optical

[Contact Us](#)

## Introduction to 800G Optical Module

Single-channel 100G modules are easier to implement, while 200G modules demand more advanced optical devices and require gearbox conversion due to the 112Gbps PAM4 electrical

[Contact Us](#)



## Optical module design resources , TI

Design requirements Modern optical module designs often require: Reduced power consumption to control and limit module temperature rise. Dynamic and precise control of laser diodes to regulate

[Contact Us](#)



## What Is DDM/DOM in Optical Transceivers and Why It Matters

In practical terms, a transceiver with DDM/DOM exposes temperature, supply voltage, laser bias current, transmitted optical power and received optical power -- plus a few other status bytes -- over the

[Contact Us](#)



## Common knowledge of optical fibers, optical modules and optical

The optical modules that support this hot swap currently include GBIC and SFP. Since SFP and SFF are similar in size, they can be directly inserted on the circuit board, saving space and

[Contact Us](#)

## Understanding Optical Modules

The standards define the rate, wavelength, and transmission distance of optical modules, but not their encapsulation modes (two interoperated optical modules can have different encapsulation modes).

[Contact Us](#)



## Cisco Transceiver Modules

## Understanding Optical Modules: Types and

Explore the essential principles and types of optical modules for fiber optic communication systems.

[Contact Us](#)



Cisco Transceiver Modules - Learn product details such as features and benefits, as well as hardware and software specifications.

[Contact Us](#)

Integrated Aluminum Alloy Die Casting



Durable and Secure Metal Screws



- IP65/IP55 OUTDOOR CABINET
- ALUMINUM
- OUTDOOR ENERGY STORAGE CABINET
- OUTDOOR EQUIPMENT CABINET

### How To Switch Optical-Electrical Mode On Huawei

After switching the interface to the optical interface, access the GE SFP optical module at this time, and the module can work normally. For related commands,

[Contact Us](#)

### The Ultimate Guide to SFP Modules (2026): Types,

What is an SFP? SFP (Small Form-factor Pluggable) is a compact, hot-pluggable network interface module used to connect network devices (switches, routers,

[Contact Us](#)



### Understanding Optical Transceiver Modules: A Comprehensive Guide

In the world of fiber optic communications, optical transceiver modules play a pivotal role as interfaces that convert electrical signals to optical signals and vice versa.

[Contact Us](#)





### Cisco 400G QSFP-DD High-Power (Bright) Optical

Learn how Cisco 400G QSFP-DD High-Power (Bright) Optical module's small size and low power make it an optimal choice for a wide range of

[Contact Us](#)



### 10G BiDi SFP+ Optical Module Interface Comparison: SC vs LC

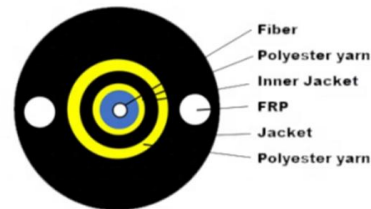
In BiDi optical modules, SC (Subscriber Connector) and LC (Lucent Connector) are common fiber interface types. While they share the same functionality, they differ significantly in their

[Contact Us](#)

### What Is an SFP Module? -- Complete Guide to SFP, SFP+ & SFP28

For optical modules, the SFP contains a TOSA (Transmit Optical Subassembly) and ROSA (Receive Optical Subassembly) to handle the fiber signal. For copper SFP modules (RJ-45), the module

[Contact Us](#)



### Cisco QSFP28 100G ZR Digital Coherent Optics Module Data Sheet

The Cisco QSFP28 100G ZR leverages the latest Common Management Interface Specification (CMIS) 5.2 management interface specification and is compliant to coherent CMIS. The

[Contact Us](#)

### Understanding Optical Modules: Working Principles,



Explore the working principles, structures, and performance metrics of optical modules, essential components of optical fiber communication systems. Learn

[Contact Us](#)



### **Next-Generation Connectivity: The Rise of 800G OSFP 2\*FR4 Optical**

Discover the details of Next-Generation Connectivity: The Rise of 800G OSFP 2\*FR4 Optical Transceivers in AI Data Centers at LonRise Equipment Co. Ltd., a leading supplier in China for

[Contact Us](#)

## **Contact Us**

---

For datasheets, pricing, or custom fiber access solutions, please visit:  
<https://www.frindel.es>