

The function of the light-sensing voltage regulation module



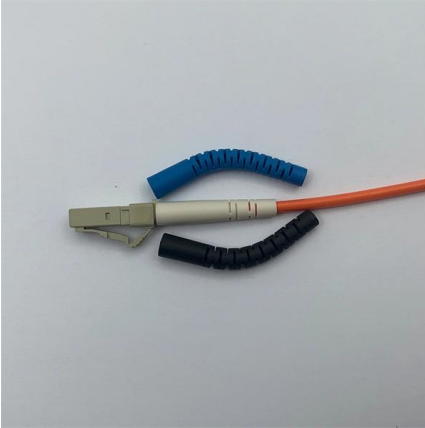


Overview

LDR sensor module is a simple device that can be used to detect light levels and respond to light. A Light Sensor generates an output signal indicating the intensity of light by measuring the radiant energy that exists in a very narrow range of frequencies basically called "light", and which ranges in frequency from "Infra-red" to "Visible" up to "Ultraviolet" light spectrum. A light dependent resistor (LDR), also known as a photoresistor, photocell, or photoconductive cell, is a passive electronic component whose electrical resistance varies based on the intensity of light falling on its surface. In darkness, an LDR exhibits high resistance, often in the megaohm (Ω) range, but when exposed to light, its resistance significantly drops to a few hundred ohms. These simple yet powerful components have an influence on numerous devices you encounter in your daily life.



The function of the light-sensing voltage regulation module



What is a Light Sensor? Types, Uses, Arduino Guide

A light sensor is a photoelectric device that converts light energy (photons) detected to electrical energy (electrons). Seems simple? There is more

[Contact Us](#)

What is Voltage Regulator Module (VRM)?

What is a Voltage Regulator Module (VRM)? In modern electronic systems, ensuring stable and precise voltage supply is critical for the reliable performance of components. One of the

[Contact Us](#)



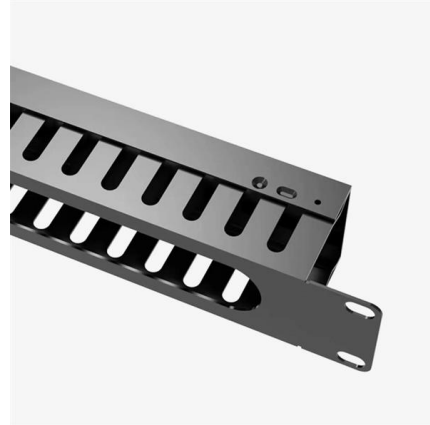
Photo-resistor LDR Light Sensor Module , Makers

The LDR Light Sensor Module detects light intensity, with resistance decreasing as light increases. Ideal for automatic lighting and brightness sensing.

[Contact Us](#)

LDR Sensor Guide for Beginners: Meaning, Types, and

By understanding its LDR sensor working, LDR working principle, and how to build an LDR circuit, you can apply this sensor in smart lighting, detection



Light Dependent Resistor LDR with Arduino: Complete Guide

If you want to control high-voltage devices like bulbs or fans based on ambient light, check out how to use a relay module with Arduino for switching. To combine light sensing with

[Contact Us](#)



LDR Sensor: Working Principle and Common Applications

Discover how LDR sensors work and their common applications in electronics. Learn about their working principle, light sensitivity, and usage in

[Contact Us](#)



LDR sensor module , How LDR Sensor Works

LDR sensor module is a low-cost digital sensor as well as analog

[Contact Us](#)





LDR Light Sensor: Working Principle, Benefits, and Top

This blog will dive deep into the working principle of LDR, its construction, types, applications, and much more. By the end, you'll have a

[Contact Us](#)



Light Dependent Resistor: A Comprehensive Guide

A light-dependent resistor (LDR) is a passive component that changes its resistance based on light intensity. Also known as photoresistors, photocells, or photoconductors, LDRs are

[Contact Us](#)



Photoresistor / Light Dependent Resistor (LDR) Circuit

Light Dependent Resistor (LDR) is a versatile and cost-effective component that play a crucial role in light-sensing applications. Their ability to

[Contact Us](#)

Waterproof and dustproof, reliable and safe

The outer classic sink design allows the sealing ring of the cabinet and door to be seamlessly compressed without leaving a trace of gaps



24V Light-Dependent Resistor Relay - Easyelecmodule

The 24V photoresistor relay module is a modular device integrating a photoresistor (light sensor), a 24V relay (switch actuator), and control circuitry. Its

[Contact Us](#)





What Is an LDR Sensor? Working, Types & Uses -

Learn what an LDR sensor is, how it works, its types, characteristics, and applications in light detection projects.

[Contact Us](#)



9 Useful LDR Circuits Explained - Homemade Circuit

In this post I have explained 9 LDR circuit projects that uses LDR light sensor to trigger a load ON/OFF through a relay. These circuits are mostly

[Contact Us](#)



Photosensitive Resistor: Principle, Test Procedure, and

For electronics professionals, understanding the LDR's operational principles, how to reliably test its functionality, and its typical applications is

[Contact Us](#)

Ordering information

NO.	1	2	3	4	5	6
Model	SP-201	SP-202	SP-203	SP-204	SP-205	SP-206
Product name	Patch Panel	Patch Panel	Patch Panel	Patch Panel	Patch Panel	Patch Panel
Illustration						
NO.	1	2	4	1	2	4
Maximum number of ports	144	288	576	144	288	576
Product size (including module and adapter)	482.0*160*74.0mm	482.0*160*76.1mm	482.0*160*77.7mm	482.0*160*74.0mm	482.0*160*76.1mm	482.0*160*77.7mm
Standard color code	RAL9005	RAL9005	RAL9005	RAL9005	RAL9005	RAL9005
Inventory	2	2	2	2	2	2



Arduino Tutorial: Light sensing

This function returns a number between 0 (inclusive) and 1024 (exclusive) that represents voltage values from 0 to 5v. Enter the following code in the main loop.

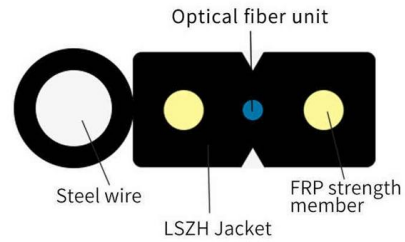
[Contact Us](#)



Arduino light sensor: A beginner's tutorial on DIY light

Arduino light sensor. A beginners project on using a light sensor with an Arduino Uno Introduction In this beginner-friendly Arduino light sensor project, you will learn

[Contact Us](#)



LDR sensor module

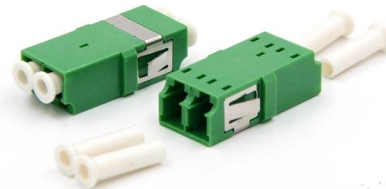
For example, on an Arduino board, you can use the analogRead() function to read the voltage value on the analog input pin. 3- Calibrate the LDR

[Contact Us](#)

LDR sensor - How to use a Light Dependent Resistor

LDR Configurations Light Dependent Resistors can be purchased in its stand-alone form, or as a module. For the stand-alone you will need a resistor

[Contact Us](#)



Current-sensing technique for current-mode controlled voltage regulator

This paper introduces an innovative current-sense technique for voltage regulator modules (VRMs). The proposed method is applied to a multiphase buck

[Contact Us](#)



How LDR Sensor Works - Principle, Uses & Arduino

Learn how an LDR sensor works, its working principle, characteristics, and Arduino applications for light detection projects.

[Contact Us](#)



Light Dependent Resistor (LDR): Working Principle,

When photons of light strike the surface of the LDR, they provide energy to electrons in the semiconductor material, allowing them to jump from the

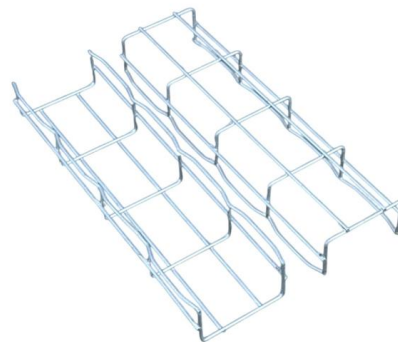
[Contact Us](#)



Light Dependent Resistor (LDR): Working, Types & Circuits

Interfacing an LDR with Arduino creates a versatile light-sensing system. The Arduino's analog-to-digital converter reads the voltage from the LDR voltage

[Contact Us](#)



LDR sensor - How to use a Light Dependent Resistor

Light Dependent Resistors can be purchased in its stand-alone form, or as a module. For the stand-alone you will need a resistor to mimic the module,

[Contact Us](#)



LDR Light Sensor: Working Principle, Benefits, and Top

This blog will dive deep into the working principle of LDR Light Sensor, its construction, types, applications, and much more.

[Contact Us](#)



What is a Light Dependent Resistor and Its Applications

This article discusses about what is a light dependent resistor (LDR), LDR circuit diagram with working principle and applications of LDR.

[Contact Us](#)

Light Activated Sensor LDR: Comprehensive Guide to

These photoresistors dynamically change their electrical resistance based on incident light intensity, providing a simple yet effective mechanism for converting

[Contact Us](#)



SUPPORTS

DIN RAIL INSTALLATION



Voltage Regulator Module

VRM stands for Voltage Regulator Module. VRM acts as dedicated power stations for sensitive electronic components such as Smartphones, TVs,

[Contact Us](#)



Light Sensor: A Simple Arduino Tutorial - Easyelecmodule

Additionally, a light bulb with motion sensor--a common smart home device that combines light-sensing and motion-detection functions--also relies on

[Contact Us](#)



Contact Us

For datasheets, pricing, or custom fiber access solutions, please visit:
<https://www.frindel.es>