

# **The function of explosion-proof non-temperature-controlled distribution boxes**





## Overview

---

Designed to prevent internal electrical faults from igniting external explosive atmospheres, explosion proof distribution boxes play a dual role: power distribution and operational safety assurance. These systems are widely deployed in chemical processing facilities, oil refining plants, offshore platforms, oil tankers, and. They are particularly suitable for applications under extreme environmental conditions, and they provide reliable protection under heavy loads. Pepperl+Fuchs provides a specialized portfolio of Ex d (flameproof) and Ex tb (dust protection by enclosure) certified terminal boxes and junction boxes engineered for reliable use in explosion-hazardous areas. The enclosure series EJB forms the optimal basis for the application-specific configuration of terminal boxes, control stations as well as control and distribution panels.



## The function of explosion-proof non-temperature-controlled distribu

---



### Types of Explosion Protection

Explosion protection is vital in hazardous areas to protect the people, the environment, and assets. Because these environments can vary greatly in

[Contact Us](#)

### Full Guide on Explosion-Proof Distribution Panel

Full Guide on Explosion-Proof Distribution Panel  
Explosion-proof distribution panels are vital components in hazardous industrial environments, ensuring safety by preventing electrical



[Contact Us](#)



### Terminal and Junction Boxes (Ex d) , Explosion Protection

Designed to withstand extreme temperatures, EJBX terminal boxes and junction boxes support operation in environments as cold as -60 °C. Customers can have each unit tailored to their

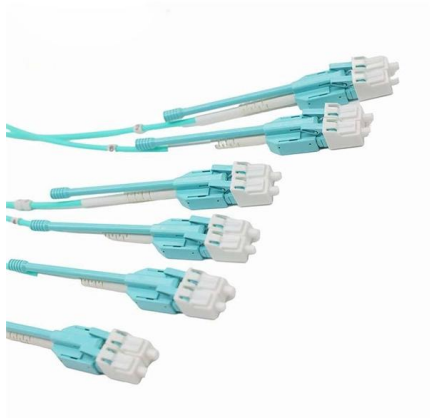
[Contact Us](#)

### Explosion Proof Distribution Box: Glands vs Conduit for Safety



Cable glands and conduit systems both do the job--sealing the enclosure, protecting the cable, maintaining the flameproof rating--but they solve different problems, and picking the wrong

[Contact Us](#)



### **Ex d Junction Box Aluminium EJB-A , Supermec**

The EJB A range of ex proof junction boxes has been designed to meet the main requirements of power distribution, monitoring and signaling, and other electrical

[Contact Us](#)

### **BM (D)X52-S Series Explosion-proof Distribution Boxes Factory**

Home >> Products >> Explosion Proof Electric Apparatus >> BM (D)X52-S Series Explosion-proof Distribution Boxes

[Contact Us](#)



### **Ex Isolation Switch/Safety Switch/Circuit Breaker Manufacturers**

CZ Electric Co., Ltd is an Explosion-proof isolation switch manufacturers and Explosion-proof safety switch, Explosion-proof circuit breaker (MCB) box factory.

[Contact Us](#)



### Distribution box solutions for explosion-proof environments in

These aren't just metal boxes; they're meticulously engineered fortresses designed to contain potential blasts and prevent disaster. Since the ATEX Directive came into force, equipment for explosive

[Contact Us](#)



### Explosion-Proof Distribution Boxes & Panels Manufacturer

An explosion-proof distribution box is a rugged enclosure for hazardous areas, safely delivering power while preventing sparks or heat from igniting flammable surroundings.

[Contact Us](#)



### Ex-d Junction Box Aluminium: Complete Guide to

Explosion proof enclosures serve diverse functions in hazardous area electrical systems: Power Distribution Panels: Safe routing of electrical power through

[Contact Us](#)



SMF(Fiber Type)

### Pneumatic Explosion protection

Ignition protection type Explosion group Temperature class Selection of explosion-protected valves with different types of ignition protection Product selection tree to find the Ex-valve which meets your

[Contact Us](#)





## Explosion-Proof Control & Distribution Boxes

The MAMX02/03 Series Explosion-Proof Control and Distribution Boxes are engineered to deliver advanced protection and long-term performance

[Contact Us](#)



### Pre-Terminated Patch Panel

- Multi-application support
- Flexible configuration
- Modular design



Multi-Functional Sliding Patch Box, Modular



Modular Sliding Patch Box



Sliding Patch Box, Modular

## How Explosion-Proof Equipment Works: Design

Explosion-Proof Equipment uses robust design and safety mechanisms to prevent ignition and contain hazards, ensuring compliance in

[Contact Us](#)

## Explosion Proof Enclosure Comprehensive Guide

The phrase ' explosion proof ' does not mean, however, that an enclosure would withstand an explosion. It means that the structure was

[Contact Us](#)



## Explosion-Proof Distribution Boxes: Special Installation Requirements

These environments require electrical distribution boxes that don't just contain sparks but withstand massive internal explosions. Certification standards like ATEX, IECEx, and NEC Class I/II Division

[Contact Us](#)

Latest news & breaking headlines , The



## Times and The

The latest breaking UK, US, world, business and sport news from The Times and The Sunday Times. Go beyond today's headlines with in-depth

[Contact Us](#)



2. Imported design is convenient for expansion.

The design of two inlets saves space and allows for rear line entry.

## Control and Distribution Panels , Ex d , EJB Series

The enclosures are certified Ex d IIB+H2 and Ex tb as well as "explosion-proof". They are available in many sizes, a wide range of operating elements and

[Contact Us](#)



## Basic concepts for explosion protection

There are many applications which require explosion proof equipment. During the over 100 years of electrical explosion protection, principles and techniques have been developed which allow the use

[Contact Us](#)



## Explosion-Proof Electrical Distribution Boxes: Applications in

Explosion-proof electrical distribution boxes are essential for safety in hazardous environments. These specialized enclosures are built to contain internal explosions and stop the ignition of flammable

[Contact Us](#)



## Explosion-proof Illumination (Power) Distribution Boxes

Explosion Protection to CENELEC, IEC, NEC. Can be used in Zone 1,2,21,22 Class I Division 2 Groups A, B, C, D Main switch and branch switch are operated with

[Contact Us](#)



## Explosion Proof Illumination Distribution Boxes (With

Flameproof and explosion proof, these power overhaul distribution boxes are suitable for use in hazardous areas. Specs: Ex mark: Ex de IIC T4 Gb DIP A21 TA,T4

[Contact Us](#)



## Ex Local Control Stations & Distribution Boxes

Atex control stations, explosion protected control units and distribution boxes made stainless steel maritime grade AISI 316L or AISI 304L. Atex Delvalle provides a

[Contact Us](#)



## ESI Junction & Terminal boxes

They are particularly suitable for applications under extreme environmental

[Contact Us](#)





## IP66 Explosion Proof Distribution Boxes for Hazardous Areas

IP66 explosion-proof distribution boxes are rugged and reliable protections for electrical systems working in hazardous environments. The harmful atmosphere of these places incorporates high levels of

[Contact Us](#)



## Explosion Proof Distribution Box for Chemical Plant Electrical Use

Designed to prevent internal electrical faults from igniting external explosive atmospheres, explosion proof distribution boxes play a dual role: power distribution and operational

[Contact Us](#)

## Explosion-Proof Equipment: What to Use to Determine

In my columns on hazardous locations, I didn't get around to equipment. For many years, Class I and Division 1 classification meant the design was going to

[Contact Us](#)



## Contact Us

---

For datasheets, pricing, or custom fiber access solutions, please visit:  
<https://www.frindel.es>