

Terminal Box SA301





Terminal Box SA301



Ex i terminal box

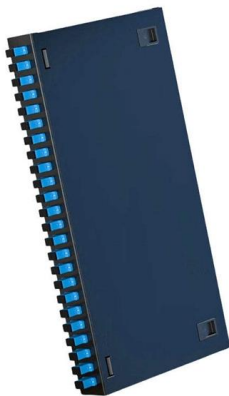
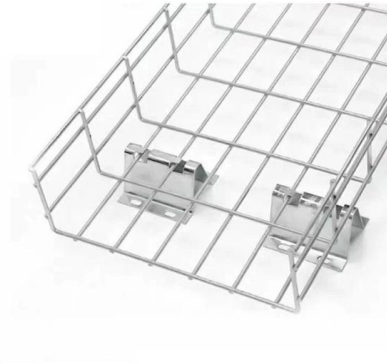
Products Junction and terminal boxes Stainless steel Ex e terminal boxes NEC/IEC Series 8150 Ex i terminal boxes 278819

[Contact Us](#)

Terminal boxes 'Increased Safety e' (EPL Gb and Gc)

Terminal boxes 'Increased Safety e' (EPL Gb and Gc)

[Contact Us](#)



TERMINAL BOX

PRODUCT OVERVIEW The SageGlass® Terminal Box serves as the junction location for the Frame and Sensor Cables when the distance between the Control Panel and the insulating glass units

[Contact Us](#)

Ex/ATEX stainless steel terminal box

It offers a variety of sizes and configurations to accommodate the specific needs of electrical installations. The stainless steel Ex/ATEX box is equipped with grounding systems and can include

[Contact Us](#)



Terminal boxes , Junction boxes , Ex , Ex e , Ex d , ATEX , Explosion

Terminal boxes for safe installation in hazardous areas Safely conduct, connect and distribute energy in hazardous areas with R. STAHL's terminal boxes. We offer bespoke, custom-made terminal boxes

[Contact Us](#)



Terminal box, terminal boxes, terminal boxes, terminal box

Terminal boxes are suitable for the following areas of application, for example: Wiring technology, measurement and control technology, control engineering, lift construction, mechanical engineering,

[Contact Us](#)



KL 1521.010 Terminal boxes KL

KL 1521.010 - Terminal boxes KL Stainless steel Terminal boxes, stainless steel 1.4301 (AISI 304), Protection category IP 66.

[Contact Us](#)





Junction & Terminal Boxes

A large variety of small enclosures: polycarbonate enclosure PK, aluminum enclosure GA, small enclosure KX, carbon steel in the terminal box

[Contact Us](#)



Terminal and Junction Boxes , Explosion Protection

Learn more about the different ranges of highly durable explosion-protected terminal boxes and junction boxes from Pepperl+Fuchs.

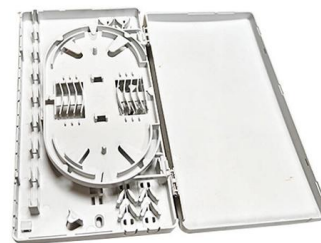
[Contact Us](#)



Terminal boxes KL Stainless steel

Terminal boxes, stainless steel 1.4301 (AISI 304), Protection category IP 66.

[Contact Us](#)



Ex e Terminal Boxes Stainless Steel , ATEX

Ex e Terminal Boxes stainless steel The SLS series of hazardous area terminal boxes, manufactured by Pepperl+Fuchs can be equipped with various quantities

[Contact Us](#)



Terminal Boxes

Lasnek range of junction, or terminal boxes are available in 304 or 316 grade of stainless steel, with a choice of dull polish or mirror finish . Available in a range of preferred dimensions, larger units come

[Contact Us](#)



Terminal boxes from R. STAHL with short delivery times

R. STAHL supplies custom-made robust terminal boxes for industry with short delivery times

[Contact Us](#)



Ex i terminal box

R. STAHL Series 8150 Ex i terminal boxes are made of brush finished stainless steel (1.4301, AISI 304 or 1.4404, AISI 316L) and are particularly resistant.

[Contact Us](#)



DETAILS DISPLAY

Focus On Every Detail



01
**Neat & Clean
Layout**
Cleaner arrangement
of components,
Easy to operate

Terminal boxes , Junction boxes , Ex , Ex e , Ex d , ATEX

We offer bespoke, custom-made terminal boxes and terminal box combinations, as well as standard products with short delivery times. Our products are certified for installation technologies all over the

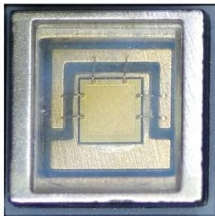
[Contact Us](#)



30A 3 Terminal Junction Box with Selective Entry

Slot terminals are ideal for taking spurs off uncut ring or loop circuit cables Solid machined brass terminals Junction box covers secured by single centre screws

[Contact Us](#)



Series G150 terminal boxes

Enclosure made from brush finished stainless steel 1.4301 (AISI 304) or 1.4404 (AISI 316L) With a choice of hinges, cam lock or screw-on cover Hinge versions with

[Contact Us](#)

Everspring

It has 3 sets of input terminals and 3 sets of relay output. Through the Universal Module, the Z-Wave Controller can read the input signal from wired sensors and control the output of wired actuators. This

[Contact Us](#)



Home Terminal Boxes Ex e Series 8146/1 made of Moulded Material

WebCode 8146S R. STAHL Series 8146 terminal boxes, made of high- quality, glass fiber-reinforced polyester resin, are ideal for use in harsh operating conditions. With eight basic sizes in various

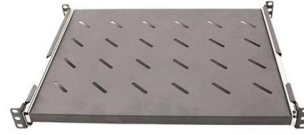
[Contact Us](#)



Steel Hinged Terminal Boxes

Scatco Europa Ltd. are approved assemblers for the NXT & STB stainless steel and mild steel terminal boxes and can assemble terminal boxes within 2-3 days on stocked enclosures and terminals.B75

[Contact Us](#)



Terminal Enclosures

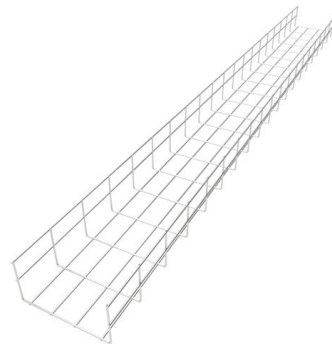
The terminal enclosures from ROSE Systemtechnik are used in a wide range of different environments. You can choose between the materials aluminium,

[Contact Us](#)

STAHL8150 Ex e Terminal Boxes/Enclosures

Control devices and control units are assembled clearly in controlstations Series 8150.The enclosure is available in brush finished stainless steel1.4404 (AISI 316L) and 1.4301 (AISI 304).The product range

[Contact Us](#)



Products

Junction box SA P series junction boxes are made from fibreglass-reinforced polyester. Because they are highly resistant to contamination from fuel oils and

[Contact Us](#)



Terminal Box/Explosion proof electrical equipment/global certification

Terminal Box KHJ offers a large selection of terminal boxes and junction boxes for wiring connection in explosion hazardous areas. They are certified according to the latest ATEX and IEC EX standards.

[Contact Us](#)



Contact Us

For datasheets, pricing, or custom fiber access solutions, please visit:
<https://www.frindel.es>