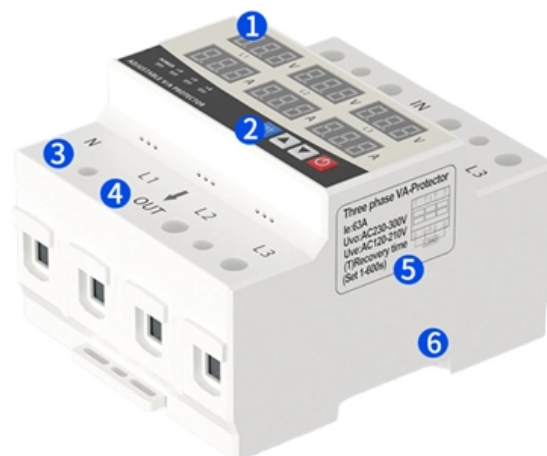


# Tension section of optical cable

GAIN AN IN - DEPTH UNDERSTANDING OF



- ① LED DISPLAY PANEL
- ② PROTECTOR OPERATION BUTTONS
- ③ NEUTRAL WIRE OUTPUT TERMINAL
- ④ LIVE WIRE OUTPUT TERMINAL
- ⑤ WORKING CURRENT AND VOLTAGE INSTRUCTIONS
- ⑥ FLAME - RETARDANT SHELL





## Overview

---

Tension - Axial tensile force applied to the messenger or other cable strength member(s). Planning for aerial cable installation includes taking into account proper clearances, cable types and properties, and the mechanical stress loading on the cable. Where reels are supplied with protective material fitted over the cable, the protection should remain in place until the cable will be installed. 10, an optical fiber port is defined as port at which an optical fiber is connected to an equipment. YOFC ensures a stable quality control system for our cable products through several programs including ISO 9001, ISO 14001 and OHS.



## Tension section of optical cable

---



### Fiber Optic Cable Bend Radius or Diameter

Fiber Optic Cable Bend Radius or Diameter All fiber optic cables have specifications that must not be exceeded during installation to prevent irreparable damage to

[Contact Us](#)

### Understanding an optical fibre cable datasheet

The objective of this document is to give an understanding of an optical cable datasheet. In this document, the interaction between cable features and the couple "Standards + Criteria" is explained



[Contact Us](#)



### OPTICAL FIBRE CABLES INSTALLATION GUIDE

For the optical fibre cable laying, we will need to use pulleys of the adequate size to meet the cable's minimum radius of curvature. In addition, lubricant is added to the cable feeder and to any

[Contact Us](#)

### Sag and Tension

Sag and tension calculations continue to be a best engineering estimate of expected loading on a cable for a given set of installation and environmental conditions.

[Contact Us](#)



### 5 Mistakes to Avoid When Pulling Fiber Optic Cables Through Conduit

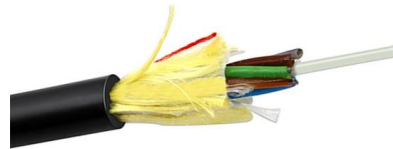
Planning a network deployment? Discover the 5 most common mistakes when pulling fiber optic cables through conduit and learn how to prevent costly damage.

[Contact Us](#)

### GENERAL INFORMATION

There are two tensile strength values used to define fiber optic cable: 1) installation (or short term) and 2) long term (or operating load). These values change depending on the cable construction and fiber

[Contact Us](#)



### Handbook Optical fibres, cables and systems

The first ITU-T Handbook related to optical fibres, Optical Fibres for Telecommunications, was published in 1984, and several others have been produced over the years. It is an honour to present you with

[Contact Us](#)

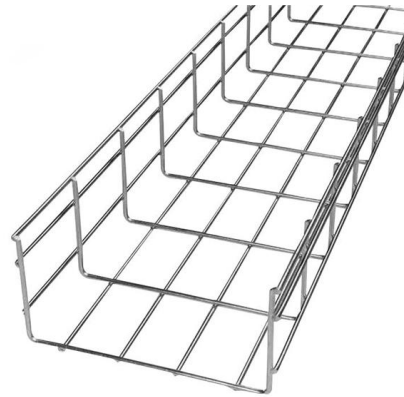




## Sag and Tension

This is a combination of the installation tension required to achieve a given sag, the weight of the cable, the weight of any ice loading on the cable, and the wind pressure felt by the cable, if any.

[Contact Us](#)



## Handbook Optical fibres, cables and systems

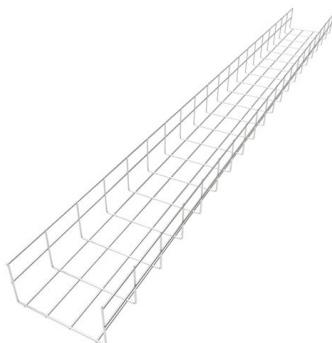
In Section 1, many types of cable installation (underground duct, trenchless, mini-trench, aerial, submarine, etc.) are described. Clause 2 deals with additional safety precautions when installing

[Contact Us](#)

## Optical Fibre Cable Technical Specification

Optical fibre cables supplied in compliance with this specifications is capable to withstand the typical service condition for a period of twenty-five (25) years without detriment to the operation

[Contact Us](#)



## Handbook Optical fibres, cables and systems

Where lashing to pre-tensioned support wire or existing metallic cable is employed, the optical fibre aerial cable must be constructed to withstand lashing. The lashing-wire tension must also be

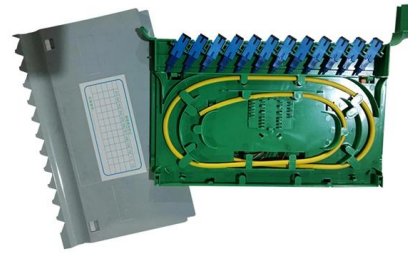
[Contact Us](#)



## Installation of Corning Optical Communications Self-Supporting

1. General Corning Optical Communications self-supporting (figure-8) optical fiber cable greatly simplifies the task of placing fiber optic cable on an aerial plant. It incorporates both a steel

[Contact Us](#)



## General Optical Fiber Cable Installation Considerations

Some key considerations for installing optical fiber cable are highlighted below. Failure to follow these guidelines may result in damage or attenuation increases of the optical fiber or cable.

[Contact Us](#)

## Pulling Fiber Optic Cable in Conduit

AEN 136, Revision 2 This Applications Engineering Note (AE Note) addresses key points for planning cable pulls in conduit. Installers should consider bend radius, tension, jamming, and fill ratio before

[Contact Us](#)



## Fiber Optic Cable Bend Radius or Diameter

All fiber optic cables have specifications that must not be exceeded during installation to prevent irreparable damage to the cable. This includes pulling

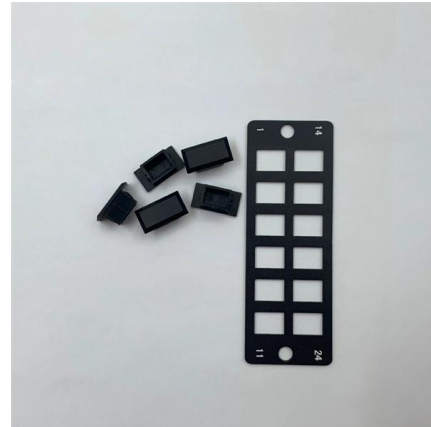
[Contact Us](#)



## What is the tension member in IEC 61000-6-8:2020

The Tension Member (also called the Strength Member) within a cable assembly basically just provides added strength to the cable. For example when

[Contact Us](#)



## The FOA Reference For Fiber Optics

The normal recommendation for fiber optic cable bend diameter is the minimum bend diameter under tension during pulling is 20 times the diameter of the cable. When

[Contact Us](#)



## incabamerica

Hier sollte eine Beschreibung angezeigt werden, diese Seite lässt dies jedoch nicht zu.

[Contact Us](#)



## Optical Fibre Cable Technical Specification

The mechanical and environmental performance of the cable are in accordance with the following table. Unless otherwise specified, all attenuation measurements required in this section shall be performed

[Contact Us](#)





## Optical Fiber Cable Installation Guideline

The following section contains information on the placement of jelly-filled loose tube optical fibre cables in vertical installations. Both indoor and outdoor environments are described.

[Contact Us](#)



## Understanding and Selecting Optical Fibre and Cable

**OPTICAL FIBRE AND CABLE** This document will provide an understanding of optical fibre, optical fibre cable (OFC), application standards, and key considerations that one should make before selecting

[Contact Us](#)

## Duct Installation of Fiber Optic LSZH Steel Armor Cable

Corning Optical Communications cable specification sheets are available which list the maximum tensile load for various cable types. The maximum pulling tension for stranded loose tube cable is

[Contact Us](#)



## Optical Fiber Cable Installation Guideline

While fiber optic cables are typically stronger than copper cables, it is still important that the cable maximum pulling tension not be exceeded during any phase of cable installation.

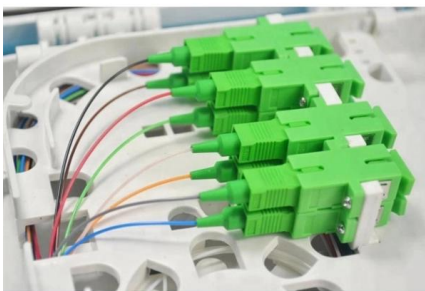
[Contact Us](#)



## What is the Bend Radius & Durability of Fiber Optic Cable?

Fiber optic cables typically have a minimum bend radius of 20 times the cable's diameter during installation, sometimes called bend radius under

[Contact Us](#)



## Prediction and Minimization of Fiber Optic Cable Pulling Tensions

The use of fiber optic cable has shown significant growth over the last five years. Existing cable pulling products and lubrication methods, while effective for large, heavy, multi-pair copper cable, were

[Contact Us](#)

## GENERAL INFORMATION

Tensile Load Strength For fiber optic cable, the tensile strength of a cable represents the highest load or pulling force that can be placed upon any cable before any damage occurs to the fibers or their

[Contact Us](#)



## TECHNICAL SPECIFICATION

In the event of cable damage or any fibre damage, the complete section (tension location to tension location) shall be replaced as mid-span joints are not acceptable.

[Contact Us](#)



### Duct Installation of Fiber Optic Cable

Fiber optic cable is subject to damage if the cable's specified maximum tensile force is exceeded. Except for short runs or hand-pulls, tension must be monitored.

[Contact Us](#)



### Duct Installation of Fiber Optic Cable

Automated figure-eight machines that coil fiber optic cable on a drum may exceed cable design limits by exceeding torsion, tension, and bend radii limitations. Do not use automated figure-eight machines

[Contact Us](#)

### Incab America LLC: Fiber Optic Cable Manufacturers & Company

Hier sollte eine Beschreibung angezeigt werden, diese Seite lässt dies jedoch nicht zu.

[Contact Us](#)



## Contact Us

---

For datasheets, pricing, or custom fiber access solutions, please visit:  
<https://www.frindel.es>