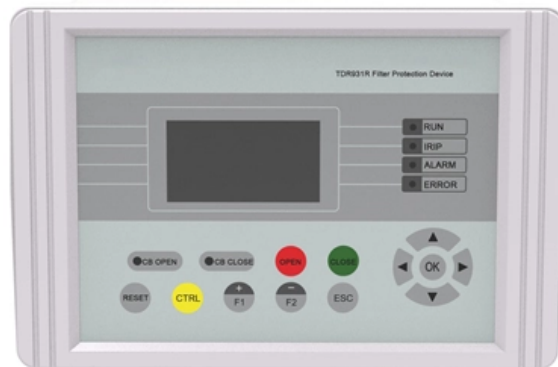


# Technical Support Micro Module IP68





## Technical Support Micro Module IP68

---



### IP68 P10mm Waterproof Front Service LED Module

Outdoor IP68 Waterproof P10mm Frontal Service LED Display Module, Dual Service LED Screen Panel PH10mm Size is 320mmx320mm With 32x32 dots.

[Contact Us](#)

### TE Connectivity

Hier sollte eine Beschreibung angezeigt werden, diese Seite lässt dies jedoch nicht zu.

[Contact Us](#)



### Micropilot FMR62 Technical Information

Integrated overvoltage protection An integrated overvoltage protection module is available for 2-wire HART as well as PROFIBUS PA and FOUNDATION Fieldbus devices.

[Contact Us](#)



### IP67 vs. IP68: Which Waterproof Rating Suits Your Application Better?

This article will take you through the key differences between IP68 and IP67 waterproof micro switches and find out which one is best for your application. Explaining how each rating



### Technisches Supportmodul - RA-MICRO Wiki

Funktionen im Bearbeitungsbereich Das technische Supportmodul ist in verschiedene Bereiche, wie RA-MICRO, System und Tools eingeteilt, dies

[Contact Us](#)



### MESA Pro

IP68-certified rugged tablet with a bright 10-inch display and an active internal cooling system. The Mesa Pro features a sunlight-readable display, powerful processors, and a durable design.

[Contact Us](#)



### Altigo G2 Micro Connector IP68 , LED lighting and individual

Sie bündelt alle wichtigen Informationen und unterstützt Sie bei allen Prozessen rund um Ihre neue Beleuchtung. LED lighting products Information for architects, planners & installers - technical details,

[Contact Us](#)

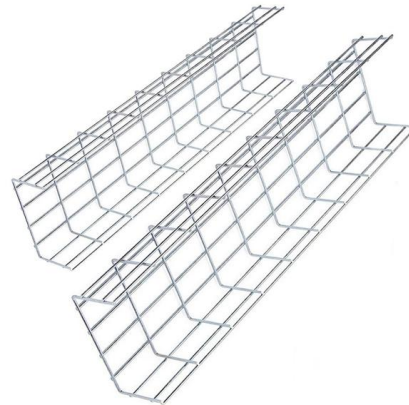




## led module ip68

LoongTeck led module IP68 featured durable structure, high lumen per watt, high IP rating and IK level, long lifespan, good thermal management of led chips IP68 Waterproof and dustproof level LED

[Contact Us](#)



## OWNER'S MANU

**CABLE CONNECTORS** The ruggedized M8 connectors are rated IP68, made of corrosion-resistant marine-grade stainless-steel, and designed for extended use in harsh

[Contact Us](#)

## IP68 Waterproof Pogo Pin Connector, What's New in

Johoty's IP68 waterproof pogo pin connector is constantly helping engineers customize more reliable and intelligent connectors. If you are looking



[Contact Us](#)



## IP68 Connection module Cat.6A 10Gbit/s for AWG22/1-26/1

Integrated Cat.6A insulation displacement technology to facilitate connection. Designed for transmissions up to 500MHz according to ISO/IEC 11801 ClassEA and Data transmission rate up to

[Contact Us](#)



### **IP68 P8mm Waterproof Front Service LED Module**

Outdoor IP68 Waterproof P8mm Frontal Service LED Display Module, Dual Service LED Screen Panel PH8mm Size is 320mmx320mm With 40x40 dots.

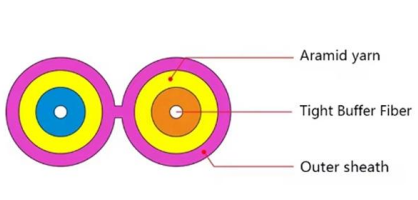
[Contact Us](#)



### **USB IMU IP68 , MotionNode IMU**

Waterproof IP68 IMU module, with 1000Hz update rate, advanced sensor fusion.

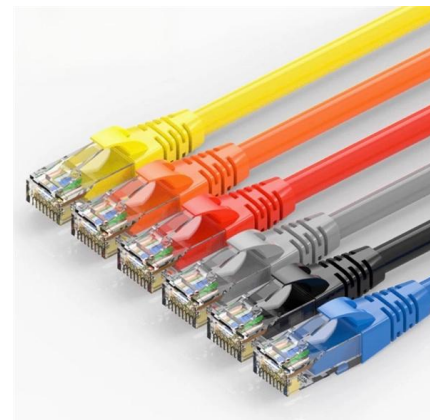
[Contact Us](#)



### **LILYGO T-Micro32 Plus ESP32 Wireless Compatible**

The LILYGO T-Micro32 Plus is an upgraded version of the T-Micro32 module, designed for compact IoT applications, wireless communication, and embedded

[Contact Us](#)



### **RJ45 Cat.6 IP68 adapter, Jack/ Jack Connection module , True**

IP68 cable connector for outdoor installation and direct burial. Integrated Cat.6 RJ45 jack to facilitate connection. Designed for transmissions up to 250MHz according to ISO/IEC 11801 ClassE and Data

[Contact Us](#)



### **TE Connectivity**



TE Connectivity IP68 Micro USB 2.0 Connectors offer stronger protection for smaller and thinner mobile devices against water and dust.

[Contact Us](#)



### 2025-05-22\_POL6x8\_A6V10990076\_en

The product range is of modular design and primarily comprises controllers and various add-on I/O and communication modules. Different HMIs can be connected to the controllers, either directly (local

[Contact Us](#)



### Rugged High Power Connectors & Latching Systems

Rugged I/O Systems Rugged power I/O assemblies, extreme optics and sealed solutions for panel-to-board and panel-to-panel applications. Features include

[Contact Us](#)



### High Speed I/O IP67, IP68 Sealed Cables

AccliMate(TM) sealed I/O systems meet IP67/IP68 requirements for dust and water proof sealing, ideal for high reliability in harsh environments. These sealed

[Contact Us](#)



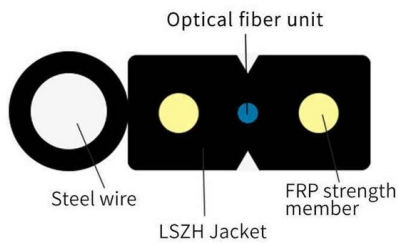


## Yogalite and Max Closure\_Solution Brochure\_SG\_2408

The Optotec MicroODC is a compact and versatile splice closure designed for FTTH networks. It provides IP68 environmental protection, IK10 impact protection, and is 2 litres in volume. It can be installed in



[Contact Us](#)



## xMEMS , Micro Cooling , Edge AI Devices & AI Data

xMEMS' micro cooling fan-on-a-chip, a 1mm-thin, solid-state active thermal management solution for next-gen edge AI hardware and AI data center systems.

[Contact Us](#)

## RST® MICROCONNECTIO

RST® MICRO DISTRIBUTOR New technology: The use of overmolded blanks enables the new RST® MICRO line to be produced in the smallest possible sizes.



[Contact Us](#)



## B612P1 · Thermal Module 320x240 / 2Megapixel / 50m IR / IP68+IK10

Thermal Module 320x240 / 2Megapixel / 50m IR / IP68+IK10 IRIP68+IK10 Uncooled Microbolometer Thermal Sensor Thermal Module with 320x240 resolution 2 Megapixel 1/2.8" CMOS

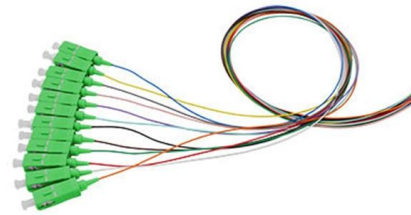
[Contact Us](#)



## IP68/IP69K PLUG & SOCKET MICRO-CONNECTOR

Why? micron.nect, the new plug & socket circular connector is born, with a diameter of only 14mm and an IP68/IP69K protection rating.

[Contact Us](#)



## The Complete Guide to IP68: Connectors, Enclosures,

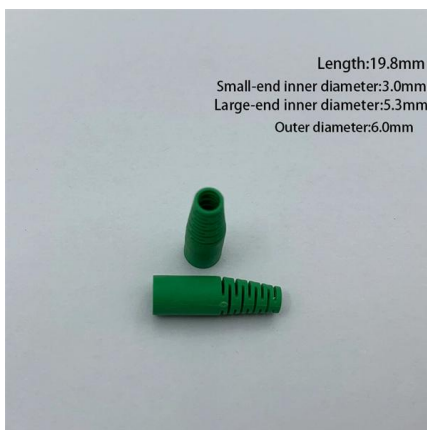
Explore the ultimate guide to IP68 ingress protection: definition, standards, product types, sealing techniques, application scenarios, procurement

[Contact Us](#)

## MTI-670G Rugged IP68 GNSS/INS Module

The Xsens / Movella MTi-670G features rugged housing and an IP68 rating. This all-in-one navigation solution is designed for easy integration and seamless interfacing with other equipment.

[Contact Us](#)



## Update your browser to continue

Find the best prices and places to buy. Google Shopping organizes information from thousands of online and local stores for you.

[Contact Us](#)



## Protective Vents, Screw-In Series for Outdoor Electronic

GORE® Protective Vents Screw-in Series ensure the safety, reliability and service life of your sealed outdoor electronic devices, even in the harshest environments.

[Contact Us](#)



## Contact Us

---

For datasheets, pricing, or custom fiber access solutions, please visit:  
<https://www.frindel.es>