

Taiwan 100Mbps Single-Mode Optical Module



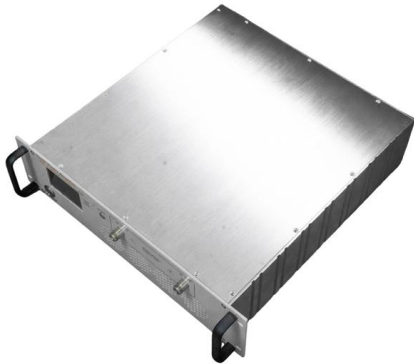


Overview

Our 100BASE SFP transceivers are designed to deliver exceptional performance in data communication and telecommunication networks. With a data rate of 100 Mbps, these hot-pluggable modules provide seamless integration into your existing network infrastructure. netLINK Series 10/100M Singlemode Single Fiber Converter is the conversion equipment of Ethernet optical-electronic signals between 10/100M UTP interface (TX) and 100M Fiber interface (FX). The traditional 10/100M Fast Ethernet can be extended to the distance of 90km through Single Optical Fiber. It uses LC connectors, operates at a 1310nm wavelength, and supports long-distance data transmission up to 100 kilometers, ideal for extending 100Mbps Ethernet links over. In the vast ecosystem of network infrastructure, the humble 100M optical transceiver (or 100M SFP module) remains a critical workhorse for enterprise access layers, industrial networks, and legacy system upgrades. Although Belden makes every reasonable effort to ensure their accuracy at the time of this publication, information and specifications described here in are subject to error or omission and to change without notice, and the listing of such information and specifications does not ensure product.



Taiwan 100Mbps Single-Mode Optical Module



10/100/1000m Single Mode Single Fiber Sc Media Converter 20 Km

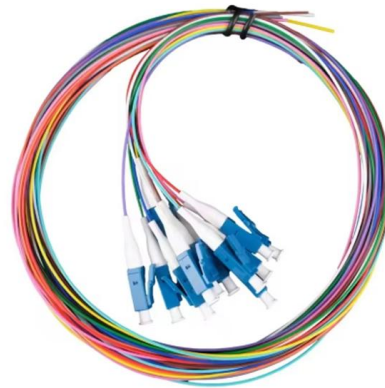
Product Description 10/100/1000m Single Mode single Fiber SC Media Converter 20 Km 1 scription The fiber media converters are a full line of products that transparently connects copper network

[Contact Us](#)

Single Lambda 100G QSFP28 Modules Overview

Explore the features and applications of Single Lambda 100G QSFP28 modules and learn how these modules enhance high-speed data transmission in various

[Contact Us](#)



SFP Optical Transceiver , SFP Optical Module , Perle

Multimode and single-mode fiber Gigabit Ethernet, Fast Ethernet, Fiber channel, ATM/SONET, SDH Hot-pluggable with durable metal enclosure Can be installed

[Contact Us](#)

SFP Transceiver

It uses LC connectors, operates at a 1310nm wavelength, and supports long-distance data transmission up to 100 kilometers, ideal for extending 100Mbps

[Contact Us](#)



QSFP 100G LR4: 1310nm Single Mode Fiber Module Explained

Understand QSFP 100G LR4 optical transceiver for high-speed 100G network, long-reach single-mode fiber links, and efficient data center or campus deployment.

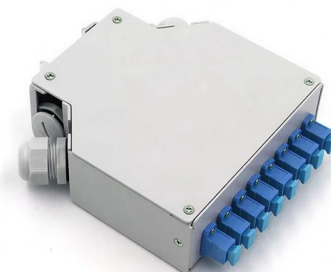
[Contact Us](#)



Gigabit Fiber Optical Media Converter 10/100/1000Mbps

The traditional 10/100/1000Mbps/Gigabit Ethernet can be extended to the distance of 100km through optical fiber link. The performance and quality of the products are

[Contact Us](#)



1G SFP LX 20km

- o Duplex LC connector
- o Built-in digital diagnostic functions
- o Up to 20km on 9/125um SMF
- o Single power supply 3.3V
- o RoHS Compliant
- o Class 1 laser product complies with EN 60825-1
- o Operating

[Contact Us](#)



Complete Guide to Choosing the Right 100M Optical

Choose the right 100M optical transceiver by checking compatibility, fiber type, wavelength, distance, data rate, connector, and reliability.

[Contact Us](#)



100BASE SFP Transceivers (100M FX) , Sanoc

Premium 100BASE-FX SFP modules for legacy and industrial networks. Sanoc Hsinchu factory direct. Free EEPROM coding. 3-year warranty.

[Contact Us](#)

TFC100A 100Mbps Single-mode Media Converter

TFC100A is a 100Mbps single-mode & Single-fiber media converter, which can implement mutual conversion between electrical signal and optical signal. This type of fiber converter can extend the

[Contact Us](#)



400G QSFP-DR4 to 4x100G QSFP28 DR1 Breakout

The 400G QSFP-DR4 transceiver supports four parallel 100G lanes over single-mode fiber (SMF) using PAM4 modulation. When paired with 4 x 100G QSFP28

[Contact Us](#)



Industrial GbE Fiber SFP Optical Transceiver Module

Industrial Gigabit Fiber SFP Optical Transceiver Module, Single-Mode 10 km 1000Base-LX (LC) Single-Mode Port, 10 km (6.2 mi.), MSA-compliant for

[Contact Us](#)



Catalyst 6500 Series 10

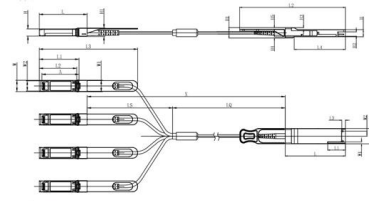
Through the support of modular SFPs optics, the 48-port 100BASE-X module offers flexibility by allowing mix and match of different optics types, allowing smaller branches to use 100BASE-FX over

[Contact Us](#)

SFP Single Mode LC Module (20km)

TRENDnet's SFP Single Mode LC Module, model TEG-MGBS20, is compatible with standard SFP slots found on network switches and fiber media converters. Each TEG-MGBS20 single mode fiber SFP is

[Contact Us](#)



Unit mm

OSFP28	L	L1	L2	L3	L4	W	W1	W2	H	H1	H2	H3	H4	H5	H6
Max	72.2	-	128	4.35	61.4	18.45	-	6.2	8.6	12.4	5.35	2.5	1.6	2.0	-
Type	-	-	4.25	61.2	18.35	-	-	8.5	12.2	5.2	2.3	1.5	1.8	6.55	-
Min	68.8	16.5	124	4.05	61.0	18.25	2.2	5.8	8.4	12.0	5.05	2.1	1.3	1.6	-

SFP28	L	L1	L2	L3	W	W1	W2	H	H1	A
Max	57.6	47.7	44.55	119.9	13.8	14.0	12.3	8.7	10.3	45.25
Type	57.4	47.5	44.35	117.9	13.55	13.8	12.1	8.5	10.1	45
Min	57.2	47.3	44.15	115.9	13.3	13.6	11.9	8.4	9.9	44.65



Unlock High-Density 100G Connectivity: Your Guide to the 100G

Enter the 100G PSM4 (Parallel Single-Mode 4-lane) optical module - a crucial workhorse powering efficient 100 Gigabit Ethernet (100GbE) links. This guide dives deep into what makes

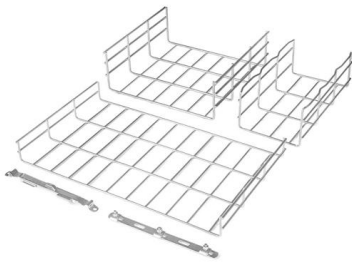
[Contact Us](#)



SFP-SMWA Single-mode WDM 100Mbps Optical Module

SFP-SMWA Single-mode WDM 100Mbps Optical Module Single-mode WDM(1550/1310nm) 20km 100Mbps SFP Optical Transceiver

[Contact Us](#)



SFP-SM Single-mode 100Mbps Optical Module

SFP-SM Specifications 100Mbps 100Base-SM Ethernet Compatible with RoHS Duplex LC connector RoHS compliant and Lead Free

[Contact Us](#)

SFP+ Single Mode LC Module (10km)

TRENDnet's SFP+ Single Mode LC Modules are compatible with standard SFP+ slots found on network switches and fiber converters. Each single mode 10G

[Contact Us](#)



Single-mode vs Multimode SFP: What's the Difference?

Single-mode SFP and multimode SFP are the two main types of hot-pluggable optical transceivers used in fiber optic networks. Both of them use LC

[Contact Us](#)



OPDY-SC0-xx-CB Single-Mode 400Gbps Tunable

OPDY-SC0-xx-CB Single-Mode 400Gbps Tunable Optical Module - 120km Long-Reach Solution from Taiwan Introduction As global network operators accelerate

[Contact Us](#)



Understanding Single-mode and Multi-mode SFP

A: SFP single-mode optical modules and SFP multi-mode optical modules are incompatible. If you mix SFP single-mode optical modules and SFP multi-mode

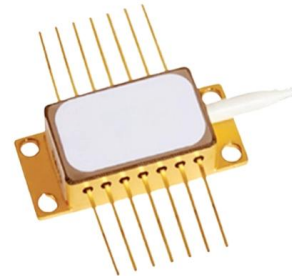
[Contact Us](#)



HANUTECH 1.25G Gigabit Ethernet Fiber Media

1.25G Gigabit Ethernet Fiber Media Converters with SFP LC Single Core Transceiver Module, Single-Mode LC, SMF RJ45 to SFP Slot up to 20KM,

[Contact Us](#)



MTS-SFP-100M-SM/LC Technical Data Sheet

Belden provides the information and specifications herein on an "ASIS" basis, with no representations or warranties, whether express, statutory or implied.

[Contact Us](#)



ComNet SFP-36B Small Form-Factor Pluggable Module, 100Mbps,

The ComNet SFP modules offer different wavelengths and optical power budget to allow distances from 300 meters to 120 kilometers. These SFP modules are industrially rated to perform in the most

[Contact Us](#)



Gigabit Mini FTTH 1 Sc with 1 RJ45 Optical Transceiver

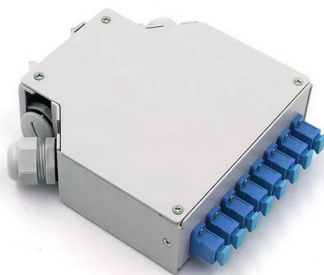
Gigabit Mini FTTH 1 Sc with 1 RJ45 Optical Transceiver 10/100/1000Mbps Single Fiber Single Mode Fiber Optic Media Converter, Find Details and Price about

[Contact Us](#)

SFP Ethernet Fiber Module

Upgrade your network with our SFP 100Base-SX Fiber Module, featuring LC Multimode capabilities for up to 2km at 1310nm. Ideal for enhancing short-range

[Contact Us](#)



Exploring 100G Single Mode QSFP28 Transceiver Types

Explore 100G single mode QSFP28 module types by distance, cost, and use case to select the best fit for data center, metro, or long-haul networks.

[Contact Us](#)

155M 1310nm 20km SC/FC/ST 1x9



Transceiver for

155Mbps Singlemode 1310nm 20km SC/FC/ST
1x9 Fiber Optical Transceiver for FE/STM-1/OC3
Manufacturer, Affordable Factory Price, 5-Year
Warranty & Money

[Contact Us](#)



100G Optical Module Selection Guide: Advantages and Types of

Explore the QSFP28 100G optical module, a vital component for high-speed network connections. Discover its unique features, advantages, and various types to meet diverse

[Contact Us](#)

Contact Us

For datasheets, pricing, or custom fiber access solutions, please visit:
<https://www.frindel.es>