

Syrian Retail Erbium-Doped Fiber Amplifier 25G





Syrian Retail Erbium-Doped Fiber Amplifier 25G



EDFA (Erbium Doped Fiber Amplifier) - Physics and

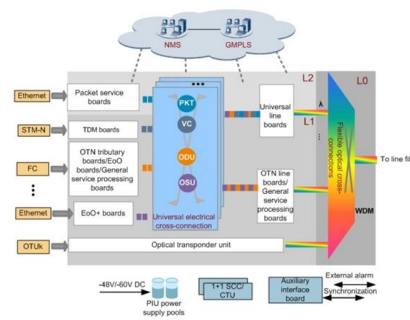
EDFA (Erbium-Doped Fiber Amplifier) is an optical device used to compensate optical signal attenuation caused by fibers and components, to increase optical

[Contact Us](#)

Erbium-Doped Fiber Amplifier

Definition of Erbium-Doped Fiber Amplifier An Erbium-Doped Fiber Amplifier (EDFA) is an optical amplifier used in fiber-optic communication systems to enhance the strength of the optical

[Contact Us](#)



Understanding Erbium-Doped Fiber Amplifiers (EDFA)

In the realm of fiber optic communications, Erbium-Doped Fiber Amplifiers (EDFAs) play a pivotal role in enhancing signal strength over long

[Contact Us](#)

Specialty Doped Fiber , Fibercore

These fibers are used in amplified spontaneous emission (ASE) light sources, erbium doped fiber amplifiers (EDFAs), and fiber lasers. OEM Amplifier Gainblock - Building block for amplifiers and





**Erbium Doped Fiber Amplifier (EDFA) ,
Fibercore**

The amplifier is based on erbium doped fiber, and can be incorporated directly into an optical network, avoiding the need to convert optical signals to electrical signals for amplification and re-launch.

[Contact Us](#)



**A global design of an erbium-doped fiber
and an erbium-doped fiber**

Over the past years, erbium-doped fiber amplifiers (EDFAs) have received great attention due to their characteristics of high gains, bandwidths, low noises and high efficiencies. As a key

[Contact Us](#)



**Erbium-Doped Fiber Amplifiers (EDFAs):
Foundations**

Conclusion The erbium-doped fiber amplifier remains the cornerstone of optical communications, more than three decades after its invention. By directly

[Contact Us](#)

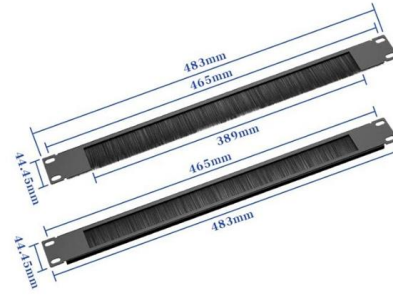




Design and fabrication of an intrinsically gain flattened Erbium doped

We report design and subsequent fabrication of an intrinsically gain flattened Erbium doped fiber amplifier (EDFA) based on a highly asymmetrical and concentric dual-core fiber, inner

[Contact Us](#)



Erbium Ytterbium Doped Fiber Amplifier, Up to 37 dBm, Rackmount

The Optilab EYDFA-XX-R Erbium Ytterbium Doped Fiber Amplifier (EYDFA) is a high-power, versatile amplifier designed for MOPA, optical communication and other general-purpose optical applications.

[Contact Us](#)

Doped Fiber Amplifier

Figure 11.9 shows a typical fiber amplifier system. Currently, the most popular doped-fiber amplifiers are based on erbium doping. Similar to semiconductor amplifier, the gain of erbium-doped

[Contact Us](#)



Erbium Doped Fibers , Rare Earth Doped Optical Fibers

F-EDF erbium doped fibers provide the basic building block to fiber optic amplifiers used in broadband optical networks in the 1550 nm transmission window. These erbium doped fibers deliver gain

[Contact Us](#)



A photonic integrated circuit-based erbium-doped amplifier

Abstract Erbium-doped fiber amplifiers revolutionized long-haul optical communications and laser technology. Erbium ions could provide a basis for

[Contact Us](#)



Erbium-doped Fiber Amplifiers (EDFA)

BaySpec supplies IntelliGain® series metro erbium-doped fiber amplifiers (EDFAs) designed for OEM integration into applications that require a high gain and a low

[Contact Us](#)

Erbium doped fiber amplifier up to 23dBm

CEFA-L-PB-LP: Continuous erbium doped fiber amplifier (up to 23dBm) optimized for L-band spectrum from 1570 to 1603nm and polarization maintaining.

[Contact Us](#)



Erbium-doped Fiber Amplifiers - Buying Guide & Suppliers

This erbium-doped fiber amplifiers buying guide provides technical background, comparison of major types, selection criteria, and an overview of suppliers.

[Contact Us](#)



Optical Amplifier--EDFA (Erbium-doped Fiber Amplifier) for WDM

An Erbium-doped Fiber Amplifier (EDFA) is a device used to boost the strength of optical signals in fiber-optic communication systems. In EDFA in optical fiber communication, the amplifier

[Contact Us](#)



25dBm 300mW Erbium-Doped Fiber Amplifier (EDFA) In-Line Amplifier

25dBm 300mW Erbium-Doped Fiber Amplifier (EDFA) In-Line Amplifier EDFA-C-LA-25-SM-M20 Module Type In-Line amplifier (LA) is an optical power amplifier product dedicated to line relays in fiber laser

[Contact Us](#)



Compact and flat-gain fiber optical amplifier with Hafnia-Bismuth

For the first time, we demonstrated a compact Erbium-doped fiber amplifier (EDFA) using a newly developed Hafnia Bismuth Erbium co-doped fiber (HBEDF) as a gain medium. The HBEDF

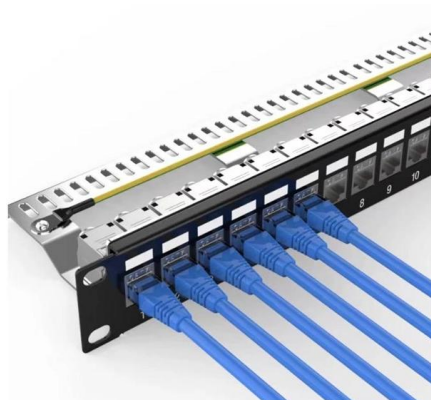
[Contact Us](#)



Doped Fiber Amplifier

Figure 18.9 shows a typical fiber amplifier system. Currently, the most popular doped fiber amplifiers are based on erbium doping. Similar to semiconductor amplifier, the gain of erbium-doped fiber amplifier

[Contact Us](#)



Erbium-Doped Fiber Amplifiers (EDFA) -



Fosco Connect

Erbium-Doped Fiber Amplifiers (EDFA) An important class of lumped optical amplifiers makes use of rare-earth elements as a gain medium by doping the fiber

[Contact Us](#)



Fiber Amplifiers - EDFA, YDFA, TDFA, amplifier

DK Photonics offers various erbium-doped fiber amplifiers for telecom applications, including compact amplifier modules as well as bench-top instruments with

[Contact Us](#)

Review of Erbium-doped fiber amplifier

In particular, the Erbium-doped fiber amplifier (EDFA) is one example of an optical fiber amplifier that is widely known for use in amplifying optical signals.

[Contact Us](#)



Doped Fiber Amplifier

The erbium- doped fiber amplifier (EDFA) has had a profound impact on the design, operation, and performance of transoceanic cable transmission systems and is central to the

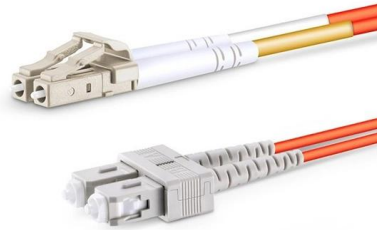
[Contact Us](#)



What Is EDFA? How Erbium-Doped Fiber Amplifiers Work

It works by passing the light through a short stretch of fiber that has been infused with erbium, a rare-earth element whose atoms can absorb energy from a separate "pump" laser and

[Contact Us](#)



Customized SDH Erbium-Doped Fiber Amplifier Datasheet , FS

Description The product is a high stability output EDFA. The stability pump optical laser and unique APC (automatic power control) circuit are employed in it as the key component to ensure the high stability

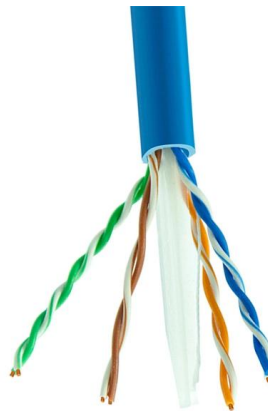
[Contact Us](#)



Erbium-Doped Fiber Amplifiers (EDFA) - Fosco Connect

Gain flatness over a 76-nm bandwidth has been realized by doping a tellurite fiber with erbium ions. Although such EDFAs are simpler in design compared with

[Contact Us](#)



Erbium-Doped Fiber Amplifiers (EDFAs): Foundations

The combined beam passes through the erbium-doped fiber, where the signal is amplified through interaction with the excited erbium ions. The output

[Contact Us](#)





Erbium-Doped Fiber Amplifier (EDFA)

Erbium-Doped Fiber Amplifier (EDFA) is an optical amplifier used in the C-band and L-band, where loss of telecom optical fibers becomes lowest in

[Contact Us](#)



Erbium-Doped Fiber Amplifiers (EDFAs)

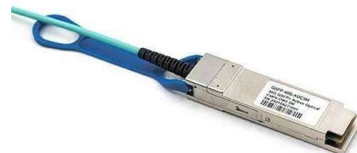
Erbium-Doped Fiber Amplifiers (EDFAs) Digicomm proudly stocks cutting-edge Erbium-Doped Fiber Amplifiers (EDFAs), empowering your network with

[Contact Us](#)

Erbium-Doped Fiber Amplifiers: Ultimate Guide

Discover the principles, applications, and benefits of Erbium-Doped Fiber Amplifiers in modern optics and telecommunications.

[Contact Us](#)



Erbium-Doped Fiber

Erbium doped fiber amplifier (EDFA) is defined as a crucial component in advanced wavelength division multiplexing (WDM) systems that provides optical gain over a wide wavelength range, typically

[Contact Us](#)



Contact Us

For datasheets, pricing, or custom fiber access solutions, please visit:
<https://www.frindel.es>