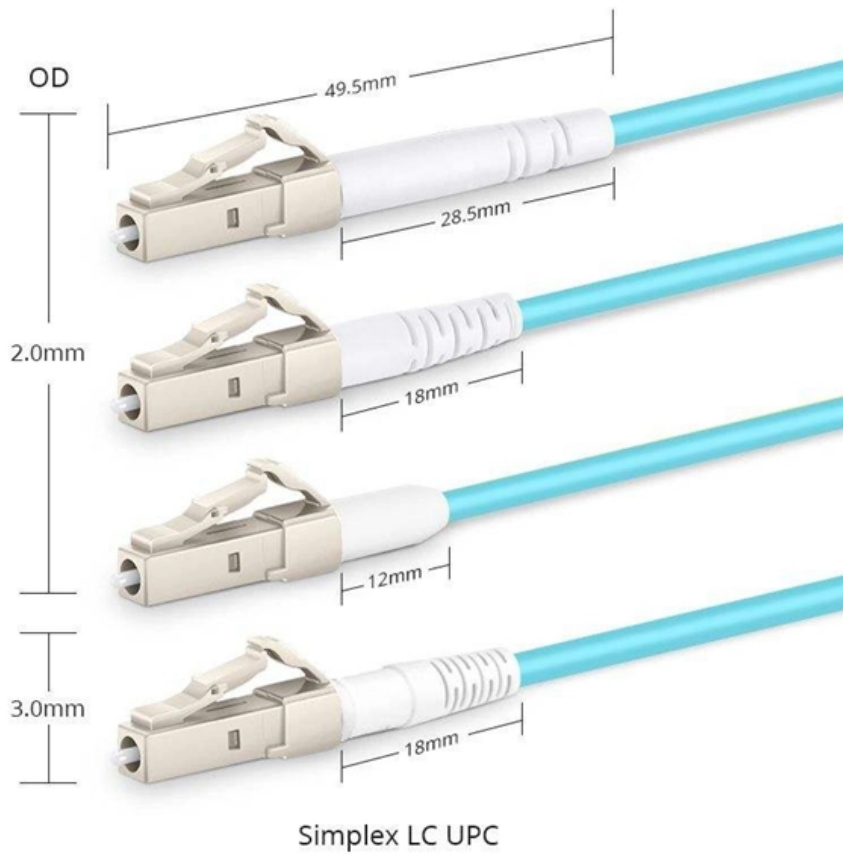


# Switchgear busbar bridge





## Switchgear busbar bridge

---



### A Guide to Electrical Busbars: Common Uses & Design

Engineers place busbars in electrical systems where they offer design advantages over wires or cabling. Some of the most common applications are: Electrical

[Contact Us](#)



### Low Voltage Switchgear Design for US and EU Markets: Busbar

Learn how low voltage switchgear design balances busbar current rating, cabinet space, heat management, and modular construction for U.S. and European projects. This guide explains

### Bus Riser in Switchgear

Learn the significance of a bus riser in switchgear electrical systems and its role in supporting efficient power distribution.

[Contact Us](#)



### What is the function of the busbar in a switchgear, and

Current - carrying capacity Select busbars according to the rated current of the switchgear to ensure that the busbars will not be damaged by overheating when

[Contact Us](#)



### Busbar

In electric power distribution, a busbar (also bus bar) is a metallic strip or bar, typically housed inside switchgear, panel boards, and busway enclosures for



[Contact Us](#)

### Bespoke Busbar Systems

30 years' experience in bespoke busbar design & integration AF Preedcrete design and supply busbar systems for commercial and industrial sectors.

[Contact Us](#)



### High voltage switchgear, busbar bridge and transformer connection

2. The function of the busbar bridge is to fix the busbar inside, and to support, fix, protect, and dissipate heat.

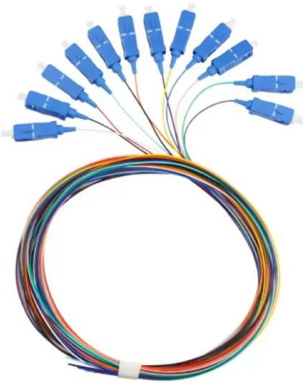
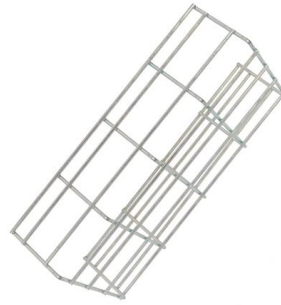
[Contact Us](#)



## What Is a Busbar: Types, Applications, & Simulation

What is an Electrical Busbar: Types, Applications, & Simulation Busbars are metallic strips or bars that function as conductors, centralizing the

[Contact Us](#)



## Switchboard Busbar Guide (2025): Design & Standards

Learn how switchboard busbars are designed, sized, and verified to IEC/UL. Compare Cu vs Al, spacing, and testing. Download the RFQ checklist.

[Contact Us](#)

## Busbars

ABB busbar systems enable safe and easy cross-wiring of miniature circuit breakers, residual current devices and other Modular DIN-Rail products.

[Contact Us](#)



## Standard cubicle configurations for a medium voltage

MV metal-enclosed switchgear This technical article will shed some light on the standard design of medium voltage metal-enclosed switchgear

[Contact Us](#)



## Shaping and connecting rigid busbars in low voltage switchgear

Busbars - machining, bending and shaping The busbars constitute the real "backbone" of every low voltage switchgear. The main busbar and branch busbars supply and distribute the

[Contact Us](#)



### ABB PC30

Busbar compartment The busbar compartment is located in the middle section of the switchgear. Main busbars can be located at the top, in the centre or at the bottom of the panel depending on the

[Contact Us](#)

## What is the function of the busbar in a switchgear, and

Busbar selection guide for switchgear: current capacity, material choice, and design considerations for electrical distribution.

[Contact Us](#)



## Busbar Design Standards for MV Switchgear

Busbar design within Medium Voltage (MV) switchgear is a critical aspect, fundamentally ensuring the safe, reliable, and

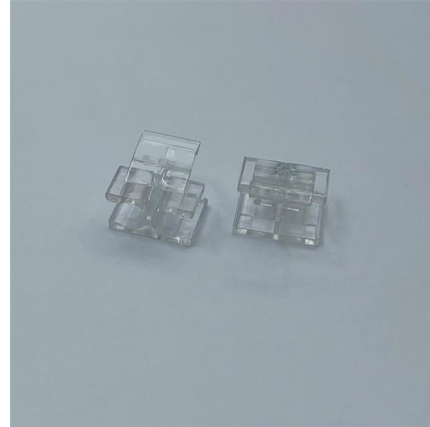
[Contact Us](#)



## Busbar Systems for Electrical Switchgear

We have been supplying bespoke electrical switchgear copper solutions for over 20 years. Using EHRT technology enables Flexitech to

[Contact Us](#)



## EMS , ? Individual Busbars for Switchgear

Special busbar systems for all electrical connections in switchgear, control cabinets and low-voltage systems.

[Contact Us](#)

## Bespoke Busbar Systems

In partnership with the leading manufacturers of IP55 & IP68 Cast Resin Busbar Systems, we are able to offer a complete solution for all your

[Contact Us](#)



## ABB MV Switchgear - Single Busbar Or Double Busbar?

Most switchgear installations used in industry with normal service conditions are based on single busbar arrangements. Compared to double busbar

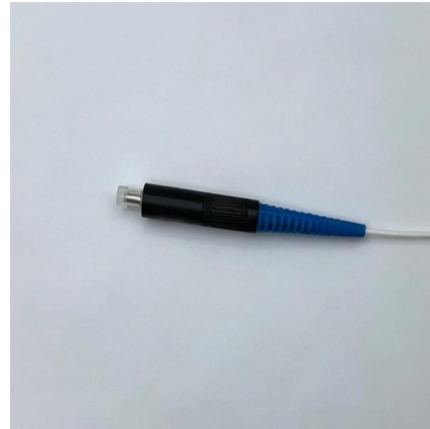
[Contact Us](#)



## Busbar Design in Switchgear: Key Principles & Best Practices

Busbar design in switchgear ensures safe, reliable power distribution by balancing current capacity, thermal performance, mechanical strength, insulation, and standards compliance.

[Contact Us](#)



## MNS Low Voltage Switchgear System Guide

**Main Busbars** The MNS main busbar system is arranged in the rear of the switchgear. This assures a maximum distance between the busbars and the operator and maintenance staff. The main busbar

[Contact Us](#)

## Major components you can spot while looking at

I worked twelve years at Schneider Electric in the position of technical support for low- and medium-voltage projects and the design of busbar trunking

[Contact Us](#)



## Busbar

Busbar can also be used as a common tapping point for multiple ground or neutral terminals. The use of busbar for switchgear goes back to the dawn of electricity generation and is very common in both

[Contact Us](#)



## Busbar systems

RiLine busbar systems for individual switchgear and controlgear. Complete solutions up to 1600 A for AC or DC applications.

[Contact Us](#)



## Copper and Aluminium Busbars for Electrical Switchgear

Precision measurement, design and equipment that utilises EHRT technology allows us to manufacture the highest quality Busbars for switchgear for clients in any

[Contact Us](#)



## Contact Us

---

For datasheets, pricing, or custom fiber access solutions, please visit:  
<https://www.frindel.es>