

Switch PoE power supply 82





Switch PoE power supply 82



Interlogix GE-DS-82-POE 8-Port Fast Ethernet Layer 2+ Managed Switch

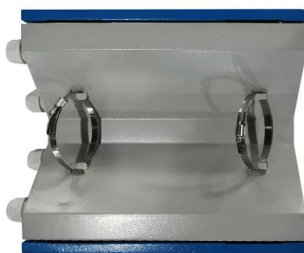
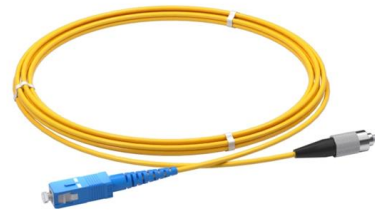
The GE-DS-82-PoE is able to power on eight PoE devices at distances up to 100 meters through the 4-pair Cat 5/5e UTP wire. These cost-effective managed switches not only deliver easy Web-based

[Contact Us](#)

PNI SWPOE82 POE Switch, 8 100Mbps POE Ports and 2 100Mbps

??High Speed Connection? SWPOE82 PNI Switch provides 8 PoE ports at 100Mbps to ensure seamless data transfer for your devices. It also has 2 Gigabit uplink ports for ultra-fast

[Contact Us](#)



(PoE) Power over Ethernet Switches

Non-PoE switches cannot supply power to end devices, so additional power sources and extension cables are needed. PoE switches can supply power along with

[Contact Us](#)

Switche

USW-16-POE Gen2 Der USW-16-POE ist ein konfigurierbarer Gigabit-Layer-2-Switch mit 16 Gigabit-Ethernet-Ports, darunter acht 802.3at PoE + -Ports mit automatischer Erkennung und zwei SFP



Configuring Power over Ethernet

The switch detects a Cisco prestandard or an IEEE-compliant powered device when the PoE-capable port is in the no-shutdown state, PoE is enabled (the default), and the connected device is not

[Contact Us](#)



PoE+ Switches , WAGO

Power supply and data transfer via ETHERNET cable: Power-over-Ethernet (PoE+) eliminates the separate power connection for devices connected to the switches

[Contact Us](#)



8-Port PLC Fiber Splitter Box

12-Port SC Fiber Splitter Box

Size: 235*215*75mm
Material: ABS, IP65,



TRENDnet TPE-TG82G

The TRENDnet TPE-TG82G is a PoE switch used with power over ethernet devices. It features eight (8) PoE ports for connecting PoE and PoE+ devices. The TPE

[Contact Us](#)



SWITCH POE GTX-P1-12-82G 8-PORT SFP

The GTX-P1-12-82G PoE Switch is an industrial type device enabling fluent network transmission at rates 10 / 100 Mb/s. PoE powering possibility, compatible with the 802.3af/at standard makes the

[Contact Us](#)



VALUE PoE+ Gigabit Ethernet Switch, 8+2 Uplink Ports (1x GbE

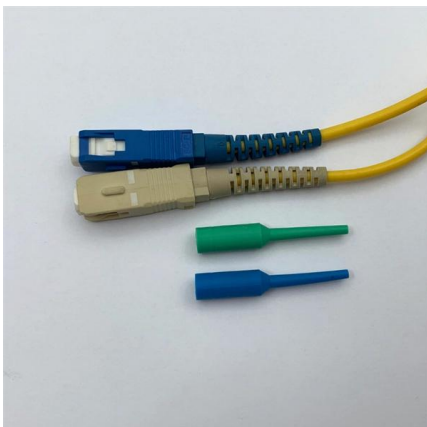
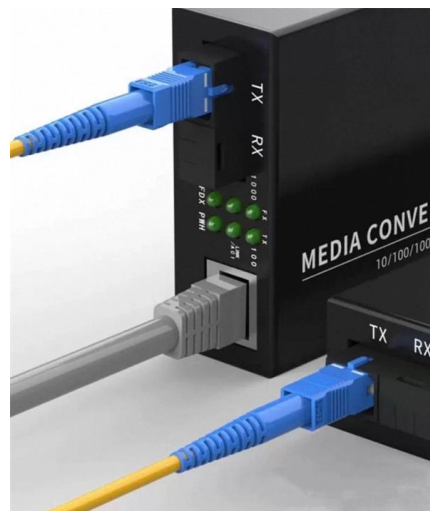
VALUE PoE+ Gigabit Ethernet Switch, 8+2 Uplink Ports (1x GbE und 1x SFP) PoE Gigabit Switch im Onlineshop von SATURN kaufen. Jetzt bequem online bestellen.

[Contact Us](#)

PNI POE-Switch SWPOE82 8 POE-Ports 100 Mbit/s und 2 UP-Link

PNI POE-Switch SWPOE82 8 POE-Ports 100 Mbit/s und 2 UP-Link-Ports 100 Mbit/s, 120 W, AI Extend-Funktion bis zu 250 m, 4 kV Blitzschutz

[Contact Us](#)



Switche

Der ALL-SG8245PM kann über seine 4 PoE Ports (IEEE802.3af/at) PoE fähige Endgeräte auch mit Strom versorgen, sodass diese kein zusätzliches Stromkabel benötigen. Um den für einen

[Contact Us](#)



PNI Switch POE SWPOE82, 8 POE 100 Mbit/s-Ports und 2 UP Link

? Hochgeschwindigkeitsverbindung: Der PNI SWPOE82 Switch bietet 8 PoE-Ports mit 100 Mbps, um eine nahtlose Datenübertragung für Ihre Geräte zu gewährleisten. Außerdem verfügt er über 2

[Contact Us](#)



SDC-PoE

SDC-PoE - advanced switch with PoE, PoE+ or HiPoE power supply, secured by micro-UPS with lithium back-up 1 to 24 port PoE switch, with built-in monitoring

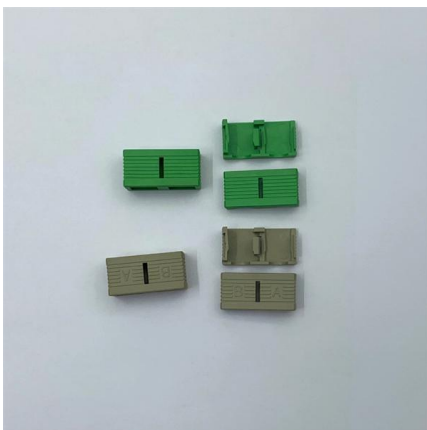
[Contact Us](#)

Ubiquiti Ultra 8-Port Managed Switch 8x Gigabit Ethernet (7x PoE+) 1x

8x Gigabit Ethernet ports / 7x PoE+ / 1x PoE++ (for power supply) / 16 Gbit/s switching capacity / Layer 2 switching Switch properties Layer 2 Management type Managed Switching capacity 16 Gbps Form



[Contact Us](#)



Global IT Products & Network Solutions Provider , Black Box

Black Box provides cutting-edge IT solutions and technology products to businesses worldwide, ensuring innovative and reliable services for global digital transformation.

[Contact Us](#)



EDS-4012-8P-4GS-LVA Moxa

Buy EDS-4012-8P-4GS-LVA Moxa - Managed Gigabit Ethernet switch with 8 10/100BaseT (X) ports with 802.3bt PoE, 4 100/1000BaseSFP ports, dual power supply 48 VDC for PoE, -10 to 60°C operating

[Contact Us](#)



What Is PoE Switch? Where Can You Use It?

PoE switches deliver power and data over Ethernet cables, eliminating the need for separate adapters. They support devices like IP cameras, wireless access points,

[Contact Us](#)

Power over Ethernet (PoE) Industrial Ethernet Switches

PoE Industrial Ethernet Switches Compact DIN Rail PoE Switches In addition to transmitting network data, a PoE Switch has a built-in Power over Ethernet

[Contact Us](#)



VALUE PoE+ Gigabit Ethernet Switch PoE Gigabit Switch

Gigabit Ethernet Switch mit PoE-Funktion für kleinere oder mittlere

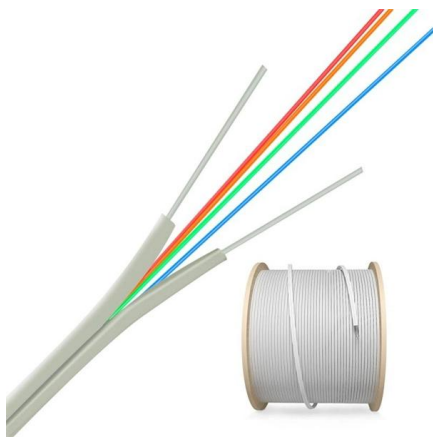
[Contact Us](#)



FYBER PoE Datasheet

FYA-82SFP provides 8-port 10/100/1000Mbps IEEE 802.3af/at Power over Ethernet with a total of 120 watts of PoE budget, which is an ideal solution to fulfill the demand of sufficient PoE power for

[Contact Us](#)



8 Port Gigabit PoE Switch with 2 Gigabit Uplink, 120W Built-in Power

About this item STEAMEMO 8-Port Managed Gigabit PoE+ Switch: 8 port managed gigabit PoE switch is a powerhouse for your network. With 8*1000Mbps PoE ports, each capable of delivering up to 30W, and a total PoE budget of 120W, it ensures reliable power and data transmission to all your IP devices.

[Contact Us](#)

LiteWave PoE Switches Datasheet

Overview The TP-Link LiteWave Series PoE Switches require no configuration and provide PoE (Power over Ethernet) ports. They can automatically detect and supply power with all

[Contact Us](#)



Interlogix GE-DSH-82-POE 8-Port 10/100+2 GigE TP/SFP Industrial

The GE-DSH-82-POE managed switch also features a store and forward switch architecture, an 8K entry address table, a relay alarm for power failure, plus dual power operation, and a redundant

[Contact Us](#)



STEAMEMO PoE+ Switch, 8 Port Managed PoE Ethernet Switch (8 POE)

About this item High-Power PoE+ Connectivity for All Your Devices: The STEAMEMO 8 - port managed PoE switch is a powerhouse for your network. With 8*100Mbps PoE ports, each capable of delivering up to 30W, and a total PoE budget of 120W, it ensures reliable power and data transmission to all your IP

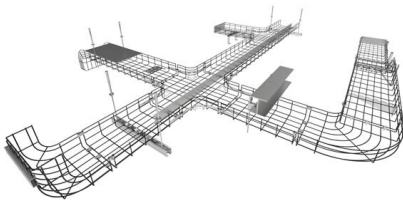
[Contact Us](#)



82 GV-TECH POE SWITCH 8 PORT (code:3076)

This is a 48V standard POE switch, designed and developed independently by USAFEQLO Tech to meet the needs of network power supply. It adopts the latest high-speed Ethernet switching chip,

[Contact Us](#)



What is a PoE Switch

A Power over Ethernet switch is a network switch that has PoE functionality integrated. Learn about different variations, limitations and benefits of

[Contact Us](#)



INDUSTRIAL POE SWITCH GTX-P1-12-82G-V2 8

The GTX-P1-12-82G-V2 PoE Switch is an industrial type device enabling fluent network transmission at rates 10 / 100 Mb/s. The device is perfect to build a

[Contact Us](#)

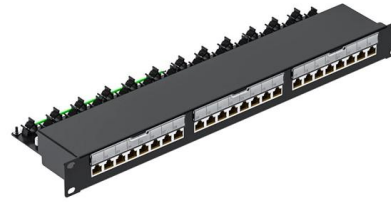




SL82RP , Fast ethernet 8 port passive poe switch 2 Gigabit uplink

This switch is designed to support both PoE receiving and supplying, effectively addressing the challenges of powering client devices such as access switches and ONUs in specialized environments.

[Contact Us](#)



8-Port Gigabit PoE+ Switch

The 8-Port Gigabit PoE+ Switch, model TPE-TG82g, delivers data and power over existing Ethernet cables to Power over Ethernet (PoE) devices such as Access

[Contact Us](#)

Power over Ethernet (PoE) Explained: PoE Standards

Explore different PoE standards and wattage levels to power devices efficiently. Unlock smarter networking with the right PoE switch today!

[Contact Us](#)



Contact Us

For datasheets, pricing, or custom fiber access solutions, please visit:
<https://www.frindel.es>