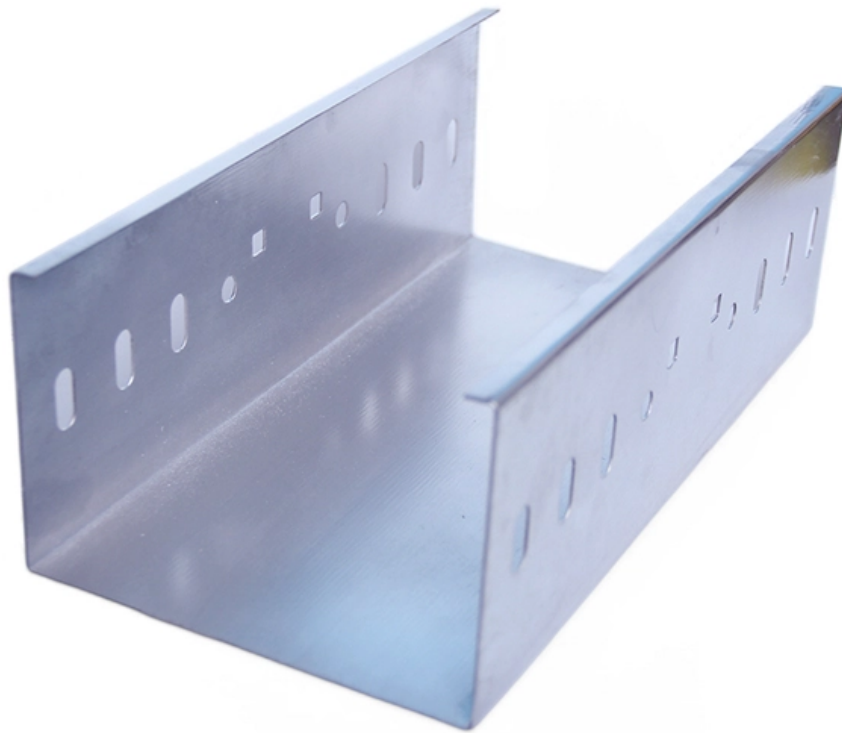


# **Square socket in the distribution box**





## Square socket in the distribution box

---



119444 die 110023 und 108646 der 61406 in  
39759 von 37276 zu 36337 das 31769 den  
30981 für 29484 ist 26923 mit 24596 im  
24129 auf 24121 des 23440 nicht 23371 eine  
22483 auch 21975 sich

[Contact Us](#)

### A Step-by-Step Guide to Wiring an Electrical Panel Box

A Step-by-Step Guide to Wiring an Electrical Panel Box An electrical panel box, also known as a breaker box or a distribution board, is a crucial component of any

[Contact Us](#)



### Electrical Box Dimensions: Find the Right Size for Any

Learn standard electrical box dimensions for outlets, switches, and junction boxes. Compare sizes, depths, volume, and clearance for safe installations.

[Contact Us](#)



### 200 Amp Ring-Type Overhead or Underground Main

About This Product The Square D 200 Amp Residential Ring-type Meter Socket with no bypass surface mounts to provide for a single electric



### Plug and Socket AC Box Distribution Board SP 20 A

Buy Plug and Socket AC Box Distribution Board at the lowest price in India. Check reviews and buy Plug and Socket AC Box Distribution Board today.

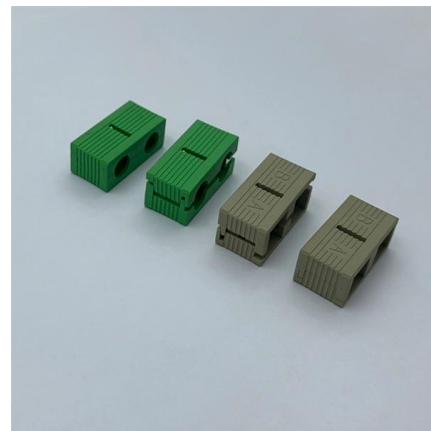
[Contact Us](#)



### How to Wire Socket Outlets in a Domestic Installations

A Radial circuit commences from the consumer unit/distribution board through an MCB/fuse of specific rating e.g. 20Amps, loops into each socket outlet but ends at

[Contact Us](#)



### How to determine the size, installation method and

9) The wood brick and iron parts needed for the installation of the distribution board need to be buried in advance, and the exposed distribution box should be fixed

[Contact Us](#)





## Square D 200 Amp Ringless Overhead or Underground

Bring service entrance equipment to your decor using Square D by Schneider Electric Homeline Ringless Underground Meter Main with Main Breaker.

[Contact Us](#)



## 200 Amp Ringless Overhead or Underground Steel

Find the Square D By Schneider Electric 200 amp Overhead or Underground Meter Socket 82414, type-a hub provisions 4-jaw design and a ringless construction

[Contact Us](#)



## British Standard Switch Socket Installation Guide , BS

VIOX British standard sockets British standard sockets (BS 1363) represent one of the world's safest electrical outlet designs, featuring 13A, 250V

[Contact Us](#)



## What Is a Distribution Box?

What to Look for When Choosing a Distribution Box If you're going to buy a distribution box, there are several things you should look for. You should

[Contact Us](#)

## Plug Socket Buying Guide , Types of Socket



Plug sockets are made up of three main parts: A backbox (also called a pattress or mounting box) can be recessed into a wall or mounted to a surface. The electrical

[Contact Us](#)



### The installation requirements for the distribution box

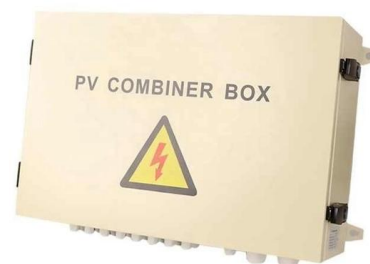
Learn how to install a distribution box safely and correctly. Covers wiring, placement, standards, and expert tips for a compliant setup.

[Contact Us](#)

### Practical Electrical Wiring for Lights, 5A, 15A, 13A Socket

Lay PVC conduits from the Distribution Board to the Switch positions, to the Ceiling Roses and to Socket outlets. The conduits can be embedded into the wall

[Contact Us](#)



### Square D 125 Amp Ringless Overhead Meter Socket for 3-Way Wire

The Square D 125 Amp Residential Ringless Meter Socket with no bypass surface mounts to provide for a single electric meter. It accommodates multiple wiring configurations for A size hub provision in the

[Contact Us](#)





## How to Choose a House Distribution Box , CHINT global

A well-chosen distribution box ensures the safety and efficiency of your household electrical system. This article guides you through selecting a

[Contact Us](#)



### AC power plugs and sockets

A novel feature of modern Australian socket outlets is a snap-fitting surround for the socket, covering the screws that affix the socket to the wall, and extending all the

[Contact Us](#)

### Distribution Box With Schuko/UTE Sockets , nVent SCHROFF

Distribution box is used to house PDUs which safely distribute electricity from power source to devices in a circuit. \*The price shown is the per piece price and does not include VAT. Depending on local



[Contact Us](#)



### Distribution Box Guide: Types, Components & Solutions

What is a Distribution Box? A distribution box, or DB box, is a circuit breaker enclosure. It is a vital part and central hub of any electrical system. The

[Contact Us](#)



## Distribution Box: Types and Functions , Axis-Electricals

A distribution box ensures that electrical supply is distributed in the building, also known as a distribution board, panel board, breaker panel, or electric panel.

[Contact Us](#)



## 200 Amp Ring-Type Overhead or Underground Meter

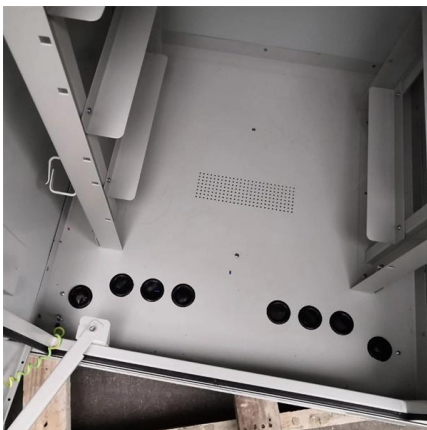
Product Details About This Product The Square D 200 Amp Residential Ring-type Meter Socket with no bypass surface mounts to provide for

[Contact Us](#)

## Single Phase Distribution Box (DB) Wiring Diagram and

Hey, in this article we are going to see the Single Phase Distribution Box Wiring Diagram and Connection Procedure. A distribution board or

[Contact Us](#)



## 12 Types of Electrical Boxes and How to Choose

Learn about the many common types of wall and ceiling electrical boxes for switches, outlets, light fixtures, ceiling fans, and junction boxes.

[Contact Us](#)



## A Step-by-Step Guide to Wiring an Electrical Panel Box

Find out how to properly wire an electrical panel box with a comprehensive diagram and step-by-step instructions.

[Contact Us](#)



### Area distribution boxes with connectors

The area distribution box associated with the copper or optical feedthrough sockets allows total flexibility: the connections close to the workstation are centralised.

[Contact Us](#)



### Small distribution box installation steps

The steps to install a small distribution box include selecting a suitable location, installing the base, placing the distribution box, connecting the

[Contact Us](#)



### INDUSTRIAL PLUGS, SOCKETS & ENCLOSURES

Legrand's CSR roadmap is a natural extension to the governance and sustainable development approach in which the company has been engaged for many years. The CSR roadmap firmly asserts

[Contact Us](#)





## How to Install a Cable Distribution Box Safely and

In modern electrical systems, cable distribution boxes (also known as electrical distribution boxes or distribution boxes) play a crucial role as the key

[Contact Us](#)



## 12 Types of Electrical Boxes and How to Choose

The most commonly used box for junctions is a 4-inch square box (either metal or strong plastic), which offers ample space for making wire

[Contact Us](#)

## A1 LED 8-Way Square Modular Switch Board with 5 x

Upgrade your home or office's electrical distribution with our 8 Module Square Box! This compact and durable box features: 5 rocker switches for effortless control

[Contact Us](#)



## Contact Us

---

For datasheets, pricing, or custom fiber access solutions, please visit:  
<https://www.frindel.es>