

Spacing of cable tray suspension pins





Overview

Cable Management Tray Size: Choose a tray size that will hold the desired amount and length of cable. Support Spacing: Remember the NEC requires no more than 4 feet of support spacing. When developing our cable support OBO can offer reliable solutions for systems, three attributes are at the routing and fastening cables securely core of what we do: efficiency, resil- for each of these installation challeng-ience and safety. Is your cable tray system optimized for safety, dependability, space and cost savings?

Cable tray (or cable ladder) systems are a popular alternative to electrical conduit systems, as they have an outstanding record for dependable service, design flexibility and cost savings in commercial and. Route the Cables: Lay the cables inside the tray, ensuring they are evenly distributed to prevent overloading.



Spacing of cable tray suspension pins



B-Line series Cable Tray Design Considerations

When supporting small diameter multi-conductor control and instrumentation cables, 6, 9, or 12-inch rung spacings should be specified.

[Contact Us](#)



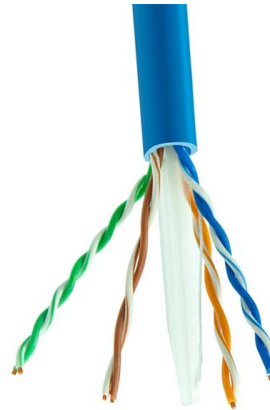
Beama Best Practice Guide , Installation Of The System , Cable

The following recommendations are intended to be a practical guide to ensure the safe and proper installation of cable ladder and cable tray systems and channel support and other support systems.

Precautions for Cable Tray Installation

Cable Tray Installation Guide The correct installation of cable trays is crucial for establishing a reliable and efficient cable system. It ensures that cables are

[Contact Us](#)



Best Practice Guide to Cable Ladder and Cable Tray Systems

The radius for cable ladder and cable tray fittings is usually determined by the bending radius and stiffness of the cables installed on the cable ladder or cable tray.

[Contact Us](#)



Cable Tray Technical Guide A practical guide to product selection and

A practical guide to product selection and installation This guide for engineers and installers has been developed by ABB as a practical reference regarding cable tray characteristics, installation, and

[Contact Us](#)



Criteria for Sizing, Designing, Installing and Supporting of Cable-Tray

7.1 Cable tray system designs shall normally be aluminum ladder-type NEMA 20A tray with 225 mm (9 in) rung spacing with and outside flange. A 100mm (4 in) loading depth has been found to be a good

[Contact Us](#)



Document DICOS

trough or ventilated cable tray: A fabricated structure consisting of integral or separate longitudinal rails and a bottom having openings sufficient for the passage of air, fumes and vapors, and for heat

[Contact Us](#)



Vertical Straight Cable Tray Support Spacing , Eng-Tips

"Cables with copper conductors, regardless of their voltage class, installed in vertical runs should be supported in accordance with the following [attached a table].

[Contact Us](#)



Cable Tray Spacing Standards for Installation and Safety

Discover the essential cable tray spacing requirements for safe and efficient installation. Learn key standards, horizontal and vertical spacing, and more.

[Contact Us](#)

Vertical Straight Cable Tray Support Spacing , Eng-Tips

I could not find the clause in NEMA VE-2 that states the maximum support interval (spacing) for vertical straight cable tray runs. Can anyone refer me to any reference that may help

[Contact Us](#)



Cable Tray

Standard Support Construction Of The Cable Tray RS With the RS 60 cable tray installation system, we offer you the last installation type of the standard support

[Contact Us](#)

Microsoft Word



Center hung tray supports allow for quicker and easier cable installation by allowing cables to be deposited into tray systems from each side. There is a maximum load capacity per hanger of 3g

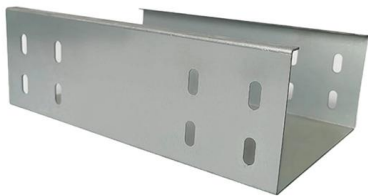
[Contact Us](#)



Cable Support Distances

This provides distances for cables based on their diameter and cable type. Prysmian was instrumental in providing this information and an extract is provided in this document.

[Contact Us](#)



Cable Fixing Distances , Horizontal & Vertical Gaps

Unicrimp explains required distances between cable fixings, helping you achieve compliant horizontal and vertical spacing in every type of installation.

[Contact Us](#)



Guide to cable support systems

The mesh cable trays are suitable for the installation of power cables and cables in various areas of application. The grid spacings mean that cables can be inserted and run out in various directions.

[Contact Us](#)

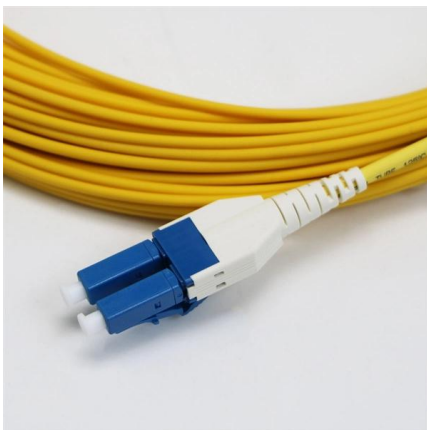




Best Practice Guide to Cable Ladder and Cable Tray Systems

This guide covers cable ladder systems, cable tray systems, channel support systems and associated supports intended for the support and accommodation of cables and possibly other electrical

[Contact Us](#)



B-Line series Cable Tray Design Considerations

Is your cable tray system optimized for safety, dependability, space and cost savings? Cable tray (or cable ladder) systems are a popular alternative to electrical conduit systems, as they have an

[Contact Us](#)

Cable tray spare spacing requirements vs. fill requirements per NEC

Good day All I have a quick question regarding the requirements for cable tray spare space requirements and the relationship with article 392 in NEC. We have a company requirement to



[Contact Us](#)



Cable Tray

All changes of direction must be supported in the immediate vicinity of the joints (distance [Contact Us](#))

Cable Tray Support Spacing: Key Guidelines



Explained

Explore the essential cable tray support spacing requirements for safe and efficient installations. Learn NEC guidelines for perforated, ladder, and wire

[Contact Us](#)



Guide to cable support systems

The systems are suspended from the ceiling with threaded rods, stand-off brackets allow raised floor mounting of cable trays, ladders and mesh cable trays. The universal systems comprise ceiling

[Contact Us](#)



A Guide to Installing and Supporting Electrical Cable Trays

A professional guide to installing electrical cable tray systems per NEC Article 392. Covers support, securing cables, and fill calculations.

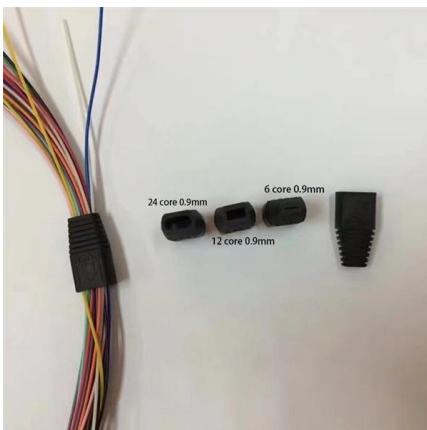
[Contact Us](#)



Cable Tray SHIB NAL

Cable trays are not raceways, but they are treated as a structural component of a facility's electrical system. Cable trays are a part of a planned cable management system to support, route, protect and

[Contact Us](#)

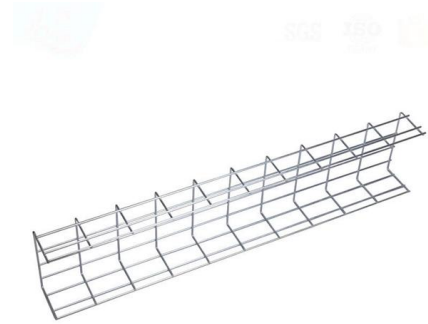




Chapter 14 Cable Support systems

Support of cable tray and ladder is typically done in the same fashion as US installations but generally has fewer restrictions as to loading design. Calculations for loading of cable into tray is based upon

[Contact Us](#)



Enduro_Specification_Ladder Cable Tray_04-30-21

The tray shall be assembled by the use of a locking pin made of fiberglass reinforced thermoplastic. The locking pin shall be inserted under pressure with a high strength, chemical resistant adhesive.

[Contact Us](#)

910533-3_EN

Cable support systems are generally designed with at least 50 % reserve space available for each tray. Cable tray types, supports (types and spacing) and securing systems are selected and designed

[Contact Us](#)



Contact Us

For datasheets, pricing, or custom fiber access solutions, please visit:
<https://www.frindel.es>