

# **Slovenia Distributor Fiber Optic Junction Box 24 Cores**





## Overview

---

With a total capacity of 24 fiber terminations and 24-core splicing, this unit offers a scalable and secure termination point for next-generation fiber networks. Features: High-quality plastics with UV and impact resistance Standard user interface Reversible tray providing easy. Fiber distribution box is suitable for the wiring connection of optical cable and optical communication equipment, through the adapter in the wiring box, the optical jumper leads the optical signal, and realizes the optical wiring function. It is a versatile and highly protective solution suitable for both indoor and outdoor use. High quality 24 Core Fiber Optic Distribution Box Cabinet, 12 Port Outdoor Cable Termination Box from China, China's leading product market Fiber Optic Splitter Box product market, With strict quality control Fiber Optic Splitter Box factories, Producing high quality 24 Core Fiber Optic. EZZ Communication products is a manufacturer and distributor of fiber optic test and splice equipment, fiber optic tooling, cables, network components and structured cabling accessories, covering LAN, PON and Telekom networks.



## Slovenia Distributor Fiber Optic Junction Box 24 Cores

---



### **IP65 Waterproof Fiber Optical Distribution Box 24 Port**

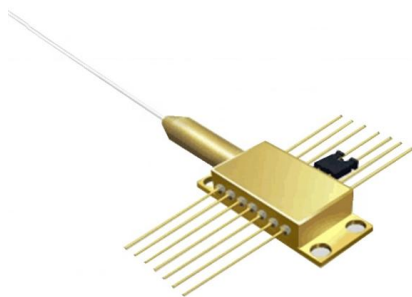
Optimize your fiber optic setups with our 24 Port Fiber Distribution Box, featuring a

[Contact Us](#)

### **24 Port Fiber Distribution Box, Blockless Splitter Ready**

This optical distribution box comes with 2 input and 24 output port, which can accommodate up to a 1x16 blockless (mini) splitter to distribute optical fiber cable

[Contact Us](#)



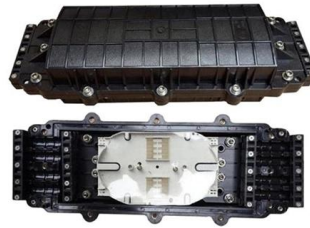
### **8 Port FTTH Fiber Distribution Box with 24 Cable**

The 8 Port FTTH Fiber Distribution Box with 24 cable outlets can house 4 sc duplex adapters and one 1x8 blockless splitter and supports 24 cores splicing.

[Contact Us](#)

### **24 core joint box, 24 core joint box Suppliers and Manufacturers at**

Utilizing a 24 core joint box offers several advantages, including enhanced protection of fiber optic connections, organization of fiber splices, and the facilitation of easier repairs and upgrades.



**24 Core Fiber Optic Termination Box/  
Junction Box**

Product Description FTKS-1805-16F 24 core Fiber Optic Termination Box/ Junction box 1.Product Description This box is used as a termination point for the feeder

[Contact Us](#)



**How to Install 24 Core Fiber Junction Box  
Fiber Splice Closure**

Aerial 12 24 Core PP ABS Material junction box fiber optic splice closure is one of the most important equipment for user access points and junction box. The fiber closure is used to protect and

[Contact Us](#)



**Distributors: Splice Boxes & Optical  
Network Terminal**

Splice boxes and splice distributors are essential for a reliable fiber optic cabling system and serve as a connecting point between the fiber optic installation cable

[Contact Us](#)





## 24 Core Joint Box New Original FTTX Fiber Splice

24 Core Joint Box Fiber Optic Splice Closure, also known as a fiber optic junction box or optic joint closure, is a critical component designed for protecting.

[Contact Us](#)



## SJ-ODB-M15 Fiber Optic Junction Box 48 Cores

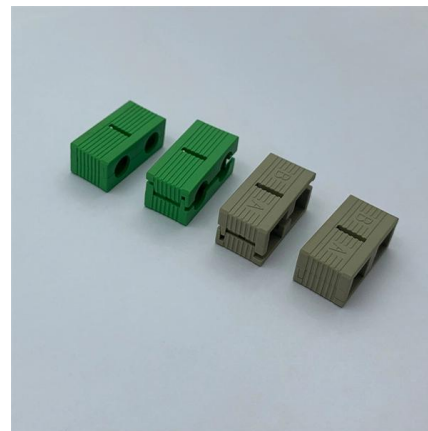
SJ-ODB-M15 fiber optic junction box 48 cores is designed for cable management, it provides protection for fiber optic cables and easy installation. With the

[Contact Us](#)

## 24 Ports 96 Cores PP Drop Cable IP68 Wall Mounted

24 Ports 96 Cores PP Drop Cable IP68 Wall Mounted Fiber Optic Junction Box Inline Closure FDB0224F is designed to seal without screws and buckles. The compact

[Contact Us](#)



## GJS-24-D(PLC) 24 Cores SC Fiber Optic Joint Closure

GJS-24-D (PLC) 24 Cores SC fiber optic joint closure is a kind of small junction box that is used to join the fiber bundles and protect them during cabling installation,

[Contact Us](#)



### **24 Port Fiber Distribution Box, Blockless Splitter Ready**

24 ports fiber optic splitter distribution box is used for feeder cable to connect with drop cable in ftth& fftb communication network.

[Contact Us](#)



### **24 Cores Fibre Joint Enclosure Inline Type Model:**

24 cores Fibre Joint Enclosure is supplied from fiber optic splice closure manufacturer Bwnfiber, designed to protect and store fiber cables spliced together.

[Contact Us](#)

### **Premium-Line 24 ports Wall Mounted Fiber Optic Box**

Premium Line 24 ports wall mount fiber optic box is used for the direct termination of fibers. Box include two separate sections.

[Contact Us](#)



### **Vertical Type Fiber Optic Splice Closure Joint Box 24 48**

Vertical Type Fiber Optic Splice Closure Joint Box 24 48 96 Cores, Find Details and Price about Fiber Optic Junction Box Fiber Optical Enclosure

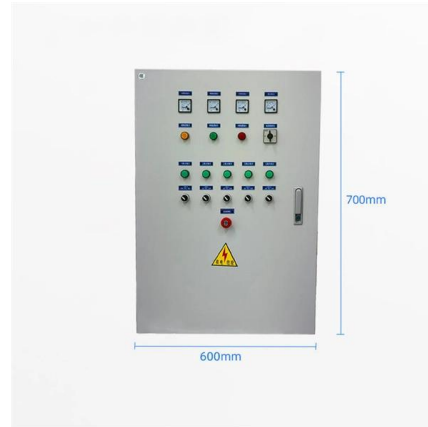
[Contact Us](#)



### **24 core Fiber Optic Splice Closure fiber optic junction box dome fiber**

The hermetically sealed closures include Light Linker, and fiber dome closures; they can be used for any outside plant application.

[Contact Us](#)



### **24 Core Fiber Optic Distribution Box Cabinet, 12 Port**

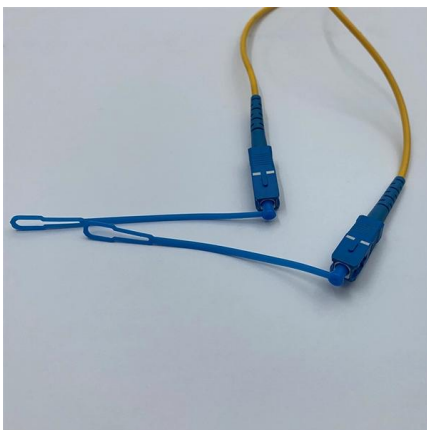
GPDB-S24D plastic fiber cable distribution termination box is used for the

[Contact Us](#)

### **24Cores IP68 Fiber Optic Distribution Box**

This box is used as a termination point for the feeder cable to connect with drop cable in FTTX communication network system. It intergates fiber splicing, splitting, distribution, storage and cable

[Contact Us](#)



### **24 Core Joint Box New Original FTTX Fiber Splice Closure ONU**

24 Core Joint Box Fiber Optic Splice Closure, also known as a fiber optic junction box or optic joint closure, is a critical component designed for protecting.

[Contact Us](#)



### **24 Core FTTH IP65 Reinforced ABS Fiber Optic**

The Fiber Optic Distribution Box is ideal for a wide range of fiber optic network scenarios, including: FTTH Network Deployments: Serves as a

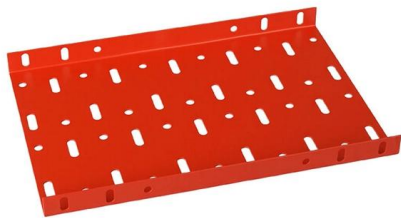
[Contact Us](#)



### **Company Overview**

EZZ Communication products is a manufacturer and distributor of fiber optic test and splice equipment, fiber optic tooling, cables, network components and structured cabling accessories, covering LAN,

[Contact Us](#)



### **24 Core Joint Box High Quality FTTH Fiber Splice Closure ONU**

This versatile closure is capable of accommodating up to 24 fibers, making it suitable for medium to large-scale fiber optic networks. It is engineered to provide robust protection for spliced fibers against

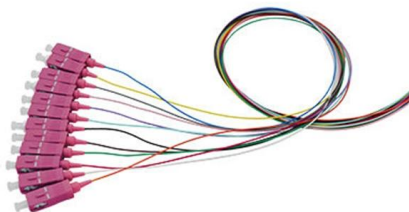
[Contact Us](#)



### **24 Core Fiber Optic Distribution Box**

JUNPU 24 Core fiber optic distribution box is made with PC+ABS material. The equipment is used as a termination point for the feeder cable to connect with drop cable in FTTH communication network

[Contact Us](#)





## Industrial Fiber Optic Distribution Boxes , 1-24 Cores

OTRANS is a leading fiber optic distribution box manufacturer. We offer a wide range of 1-24 core FDB boxes and ODF cabinets for indoor/outdoor FTTX deployment.

[Contact Us](#)



### 24 Port Fiber Distribution Box, Blockless Splitter Ready

This optical distribution box comes with 2 input and 24 output port, which can

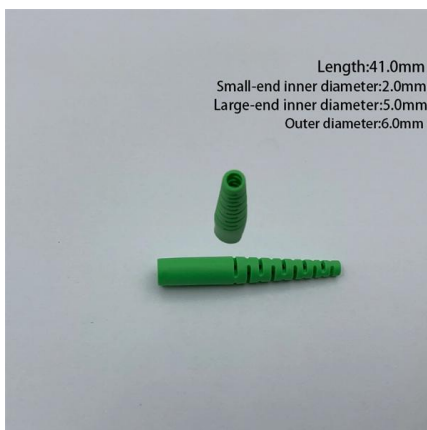
[Contact Us](#)

### SJ-ODB-SK06-A-1 Fiber Optic Junction Box 24 Ports

Something about SJ-ODB-SK06-A-1 fiber distribution box you need to know This Fiber Optic Junction Box terminates up to 2 fiber optic cables, offers space for



[Contact Us](#)



## Industrial Fiber Optic Distribution Boxes , 1-24 Cores

We offer a wide range of 1-24 core FDB boxes and ODF cabinets for indoor/outdoor FTTX deployment. Durable, IP65 rated, and easy to install. Browse our models

[Contact Us](#)



### **24 Ports Wall Mounted Fiber Splitter Distribution Box**

The 24 ports optical fiber cable distribution box is capable of housing 24 sc or 12 lc duplex adapters, supporting max 24 cores termination. It can accommodate two

[Contact Us](#)



### **12-24core fiber junction box fiber optic splice closure**

Aerial 12 24 Core PP ABS Material Junction Box Fiber optic splicing box is one of the most important types of equipment for user access points, and junction box fiber

[Contact Us](#)

### **24 Cores FTTH Terminal Box Fiber Optic Junction Box**

ANF-P2032-24C Distribution box is used as a terminal point for the feeder cable to connect with the drop cable in the FTTH communication system. The fiber fixing, splitting, splicing, and jumper can be done

[Contact Us](#)



### **24 Core FTTH IP65 Reinforced ABS Fiber Optic**

Serving as a termination point for feeder cables to connect with drop cables, this box integrates fiber splicing, splitting, distribution, storage, and cable

[Contact Us](#)



## Contact Us

---

For datasheets, pricing, or custom fiber access solutions, please visit:  
<https://www.frindel.es>