

Should cable trays be fitted with sleeves





Should cable trays be fitted with sleeves



Cable Tray Systems: Requirements and Best Practices

This article explains the main requirements and good practices for cable tray systems, including tray types, materials, loading, supports, bonding, cable selection, and installation details.

[Contact Us](#)

Cable trays are structural components of a facility's electrical system

Cables in these trays are easy to mark, find, and remove. If the cable tray system is not managed properly and overloading, mixing of cable classifications, improper grounding, and other Code non



[Contact Us](#)



100+ Essential Questions Answered About Cable Trays:

Discover over 100 expert answers about cable trays, covering key topics like material selection, load capacity, installation methods, and maintenance.

[Contact Us](#)

7 Types of Cable Trays: How to Choose the Right One

Selecting the correct cable tray type is not arbitrary--it depends on a combination of cable characteristics, environmental conditions, and installation

[Contact Us](#)



Best Practice Guide to Cable Ladder and Cable Tray Systems

Covers provide mechanical and environmental protection for cables being carried by cable ladder or cable tray, can be closed or ventilated and should be fitted in accordance with the manufacturer's

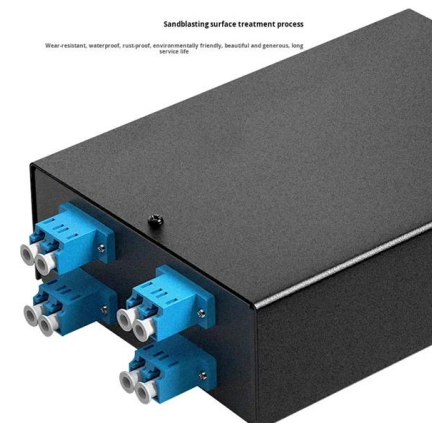
[Contact Us](#)



Cable Tray Technical Guide A practical guide to product selection and

SOLID-BOTTOM CABLE TRAY Providing additional cable protection, solid-bottom cable tray is sometimes preferred to support and protect numerous small instrumentation and control cables.

[Contact Us](#)



A Guide to Installing and Supporting Electrical Cable Trays

A professional guide to installing electrical cable tray systems per NEC Article 392. Covers support, securing cables, and fill calculations.

[Contact Us](#)



Best Practice Guide to Cable Ladder and Cable Tray Systems

This guide covers cable ladder systems, cable tray systems, channel support systems and associated supports intended for the support and accommodation of cables and possibly other electrical

[Contact Us](#)



Ultimate Guide to Cable Tray Selection - Types,

Learn how to choose the best cable tray system for your needs. Explore types, materials, installation tips, and NEC compliance in this expert guide.

[Contact Us](#)



Cable Tray Systems: Requirements and Best Practices

Comprehensive guide to cable tray systems requirements: tray types, materials, loading, supports, bonding, routing, and best practices for safe electrical cable management.

[Contact Us](#)



Everything You Need to Know About Cable Trays , Cable Trays

Discover the different types of cable trays, their many benefits when used in electrical wiring and network cabling, installation processes, and essential maintenance tips for keeping your

[Contact Us](#)



Cable Tray Type Selection



Cable Tray Type Selection What type of cable tray should be used for the main runs of a cable tray wiring system? The cable tray types to choose from are ladder, ventilated trough, or solid bottom.

[Contact Us](#)



CABLE TRAYS GENERAL INFORMATION AND

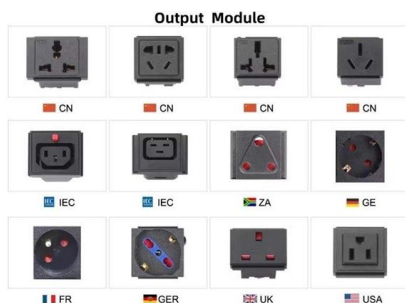
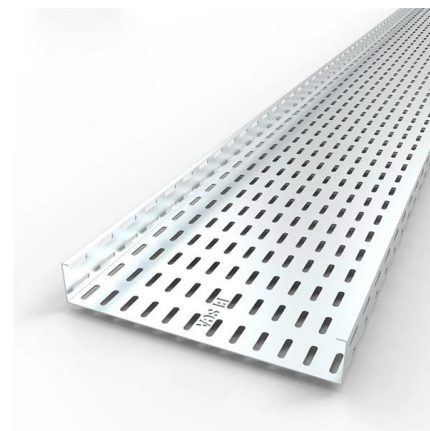
Cable tray systems are to be installed so they are accessible. If possible 300mm minimum should be left above or between installed systems to allow for cable

[Contact Us](#)

GUIDE CABLE TRAYS TECHNICAL

When fitting cable trays and their accessories, the products are cut on site to create changes of direction, adjust sections, etc. Damage can also occur during handling; as a result, both the

[Contact Us](#)



Why Choose Us

- 20 Years of OEM/ODM**
20 Years factory manufacturing experience.
- Professional R & D team**
10-years experience/mold/electronic engineer.
- Fully Certified**
Our are certified CE,UL,ROHS,ISO9001,ISO13485,etc.
- Timely Delivery**
21 production lines, 500+ employees, timely delivery guaranteed.
- Quality Assurance**
Professional QC team with full process inspection.
- After-sales service**
After Sales Service for Customer Satisfaction.

Pocket guide to cable management

As with many industrial systems, cables are a main failure point especially in applications where the cables are subject to repet-itive motion. Atlas Copco has developed this pocket guide to help you find

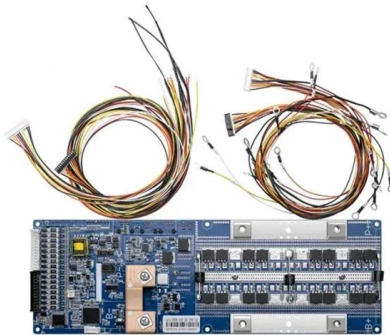
[Contact Us](#)



Do You Really Need a Cable Tray? Here's How to Decide

However, not all installations require cable trays, and it's essential to understand when and why you should use them. In this article, we'll discuss the

[Contact Us](#)



What are Cable Trays? Everything you need to know

Discover everything about cable trays in industrial settings: types, benefits, installation tips, and compliance with NEC and fire resistance standards.

[Contact Us](#)

Best Practices for Installing Cables in Trays

Learn the best practices for installing cables in trays. This guide covers essential steps, technical requirements, and key details for efficient cable

[Contact Us](#)



Cable Sleeves: Pros and Cons for Your Workspace

Optimize your workspace with cable sleeves, but are the benefits worth the potential drawbacks? Discover the pros and cons that could transform

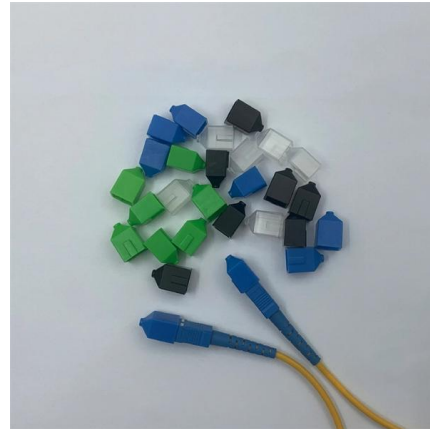
[Contact Us](#)



Mastering Cable Tray Installation , Step-by-Step Guide for a Seamless

Learn how to install cable trays correctly. Get the ultimate step-by-step guide on setting up a seamless and reliable cable management system.

[Contact Us](#)



B-Line series Cable Tray Design Considerations

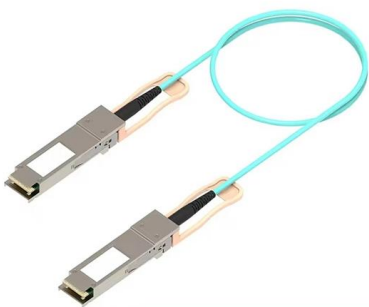
Where cable trays contain power and lighting conductors, ventilated covers are preferable to solid covers since the ventilated covers allow the cable heat to be vented from the cable tray.

[Contact Us](#)

A Guide to Installing and Supporting Electrical Cable Trays

This guide covers the critical steps, from selecting the right electrical cable tray and performing accurate cable fill calculations to managing a safe cable pull through

[Contact Us](#)



Cable Tray SHIB NAL

Cable trays are not raceways, but they are treated as a structural component of a facility's electrical system. Cable trays are a part of a planned cable management system to support, route, protect and

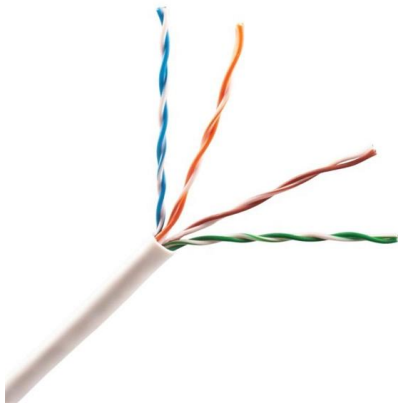
[Contact Us](#)



Cable tray

In the electrical wiring of buildings, a cable tray system is used to support insulated electrical cables used for power distribution, control, and communication. Cable

[Contact Us](#)



Cable Tray Technical Guide A practical guide to product selection and

The choice of method should be discussed with a local inspector. The best decision may be to extend only the cables, creating a discontinuity in the cable tray.

[Contact Us](#)

Precautions for Cable Tray Installation

Cable Tray Installation Guide The correct installation of cable trays is crucial for establishing a reliable and efficient cable system. It ensures that cables are

[Contact Us](#)



Contact Us

For datasheets, pricing, or custom fiber access solutions, please visit:
<https://www.frindel.es>