

Selection Guide for Anti-Catalyzing Fiber Optic Ethernet Switches Used in the Oil and Petrochemical Industry





Selection Guide for Anti-Catalyzing Fiber Optic Ethernet Switches U



Fibre Channel over Ethernet (FCoE)

FCoE is technology that enables converged I/O, which encompasses data Ethernet traffic and Fibre Channel (FC) sharing the same Ethernet wire. There are several designs that can enable a hybrid of

[Contact Us](#)

Unmanaged Switches , EKS

Unmanaged Ethernet switches with fiber optic interfaces, featuring SC/ST/E2000 connectors, cater to the growing demands of industrial networking by combining

[Contact Us](#)



home > product > solutions > industrial ethernet switch & fiber switch

FC/FC-T means with 2 Km/Multi-mode/SC Type.
FT/FT-T means with 2 Km/Multi-mode/ST Type.
FCS/FCS-T means with 30 Km/Single-mode/SC Type.
FCS-60/FCS-60T means with 60 Km/Single

[Contact Us](#)

Deploying a Fiber Optic Physical Infrastructure within a Converged

This application guide helps designers and installers select and deploy fiber optic media in plant environments. It details fiber optic network infrastructure solutions that provide high-performance



Industrial Fiber Optic Switches

Our products make use of SFP modules for multimode or singlemode fiber with LC connectors. Many of our switches support 1 or 2 fiber ports which are advantageous when daisy chain configurations are

[Contact Us](#)



Understanding SFP Switches: The Essential Guide to Fiber and Ethernet

It is crucial to select the appropriate SFP module for the fiber optic cable used and the distance needed for the network link. Q: Why are combo SFP ports considered essential for a switch?

[Contact Us](#)



8 or 10 port managed Ethernet to fiber optic switches,

The EL-1000-4GM is a versatile and robust managed Ethernet switch designed for star structure, ring, or meshed network configurations. Offering flexibility, it is

[Contact Us](#)



Ethernet Switches

The portfolio contains many popular features that are in use today by IT and Controls organizations that deploy standard, unmodified Ethernet with settings optimized for use in EtherNet/IP applications.

[Contact Us](#)



10 port managed Ethernet to multimode fiber optic

The EL-1000-4GM is a 10-port managed Industrial Ethernet Layer 2 switches. Compact Ethernet switch with 2 fiber optic and 8 RJ45 ports which support

[Contact Us](#)



FTTH BOOK-TYPE TERMINAL BOX

Sleek Design. Reliable Connectivity.



COMPACT & DURABLE

EASY INSTALLATION

Industrial Ethernet Switches , Industrial Network Switch

Industrial-grade Ethernet Switches are specifically designed to connect devices in network environments that are subject to extreme operating temperatures of

[Contact Us](#)

Length:17.0mm

Small-end inner diameter:3.1mm

Large-end inner diameter:3.6mm



Ethernet Switches , EKS

In summary, these industrial-grade Ethernet switches, equipped with robust features, compatibility with various fiber types, and specialized technologies, offer a

[Contact Us](#)



Stratix 5700

Stratix 5700 Industrial Managed Ethernet Switch
Features and Benefits: Advanced Networking
Features Integrated Device Level Ring (DLR)
connectivity helps optimize the network
architecture and provide

[Contact Us](#)



Fiber Interface Types and Selection Guidelines for

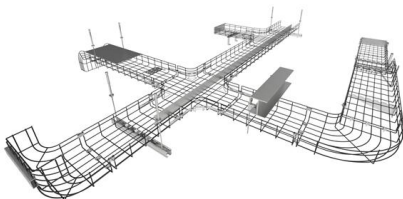
This article will provide a detailed introduction to the fiber interface types of industrial switches and offer a comprehensive selection guide to help you

[Contact Us](#)

Petrochemical and Utilities

The petrochemical and utilities industries rely on advanced communication and networking solutions to maintain seamless operations, ensure safety, and

[Contact Us](#)



How to choose an Ethernet cable

Buying the right Ethernet cable can be a real pain. Our guide clarifies all of the terminologies so you can pick out the best Ethernet cable for your needs.

[Contact Us](#)



CAT8 Ethernet and Fiber Optic Cabling Guide

Cat8 Ethernet cables and fiber optic cabling guide. Learn cable types, uses, and differences for networking needs.

[Contact Us](#)



Fiber Optic Network Switches

Fiber Optic Network Switches 57 Results View Datasheet 6FE+2x100M Multi-Mode SC Fiber Port Industrial Managed Ethernet Switch -- EKI-7708E-2MI-AE from Advantech 6FE+2x100M Multi-Mode

[Contact Us](#)

Unlocking the Power of Fiber Switches: A Comprehensive Guide to

Fiber switches play an essential role in the architecture of the latest virtual data networks, providing high capacities, better network operability, and excellent dependability. With the need for

[Contact Us](#)



Everything There Is to Know about Fiber Optic Switches

A fiber optic switch is a network device designed to manage and direct optical signals. Unlike traditional electrical switches, which process data via copper-based transmission, fiber optic variants utilize light

[Contact Us](#)



Stratix Industrial Networks Infrastructure At-A-Glance Selection Guide

REP (Resilient Ethernet Protocol) A ring protocol that allows switches to be connected in a ring, ring segment or nested ring segments. REP provides network resiliency across switches with a rapid

[Contact Us](#)



Layer 3 Switches

Layer 3 switches deliver high-speed data routing, VLAN support, and advanced security--ideal for data centers, ISPs, enterprises, and industrial networks.

[Contact Us](#)

Industrial Ethernet Switches Selection Guide

No longer just a network accessory, the industrial Ethernet switch has evolved from its origins as a simple factory data acquisition device. Today, these switches serve a continually broadening

[Contact Us](#)



Industrial Ethernet Switch Selection Guide

Learn how to choose an industrial Ethernet switch for automation systems, Profinet networks, and reliable industrial PCBA deployment.

[Contact Us](#)



How to configure the Gigabit Ethernet fiber-optic interface to support

Resolution The fiber interface has a fixed speed and does not support duplex options, but you can set the interface to negotiate link parameters (the default) or not to negotiate. For fiber

[Contact Us](#)



Industrial Ethernet Switch Supplier/Technology Evaluation & Selection

Industrial Ethernet Switch Selection Strategic Issues The profile definition for an industrial Ethernet switch has the potential to evolve drastically over the coming years. This selection guide highlights

[Contact Us](#)

Network Switches

Cisco network switches deliver performance, flexibility, and security. Cisco switches are scalable and cost-efficient and meet the demands of hybrid work.

[Contact Us](#)



Industrial Ethernet Switches

ATOP offers reliable, cost-effective unmanaged switches for simple network topologies in harsh environments. IP30-rated and certified for Industrial EMC (EN61000-6-4 and EN61000-6-2), they

[Contact Us](#)



Fiber Optic Switches , Advanced Testing Equipment

Find a selection of fiber optic switches for use in fiber network and optical systems.

[Contact Us](#)



This guide is arranged to help the user select cabling based on the

This document will help the reader to select connectivity components based on zero mitigation. Mitigation is a method of converting one environment into a less harsh environment. Further, this

[Contact Us](#)

Contact Us

For datasheets, pricing, or custom fiber access solutions, please visit:
<https://www.frindel.es>