

Selection Guide for 25G Long-Distance Optical Transceivers for Cloud Computing





Selection Guide for 25G Long-Distance Optical Transceivers for Cloud



100G QSFP28 Transceivers: Types, Specs and How to Choose

A complete guide to 100G QSFP28 transceivers covering types, specs, reach, compatibility, and how to choose the right module for data center and telecom networks.

[Contact Us](#)

Data Center Transceiver Selection Guide for 100G to 400G Optical

Comprehensive guide to selecting 100G to 400G data center transceivers with specs, deployment scenarios, and expert tips for optimal high-speed connectivity.

[Contact Us](#)



Cisco SFP-10/25G-CSR-S Compatibility Guide Explained

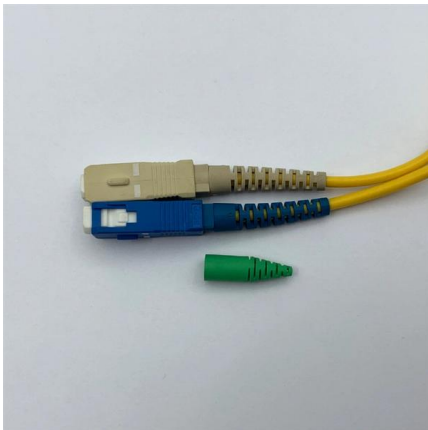
This guide focuses on clarifying how Cisco SFP-10/25G-CSR-S works within Cisco ecosystems and multi-vendor environments. It also highlights key compatibility requirements across hardware

[Contact Us](#)

Best 25G Optical Transceiver for Enterprise Networks

Upgrade your network efficiently by selecting the right 25g optical transceiver. I analyze SFP28 compatibility, reach standards, and interoperability protocols.





SFP Modules Dubai , IRIX Fiber Optic Transceivers & SFP+ UAE

Fiber optic modules UAE market serves diverse applications including data center server connectivity, campus building interconnection, storage area networks (SAN), metro area networks,

[Contact Us](#)

Cisco 25GBASE SFP28 Modules Data Sheet

Certified and tested on Cisco SFP28 ports for superior performance, quality, and reliability. High-speed connectivity compliant to IEEE 802.3by and



[Contact Us](#)



Types of Area Network and How Optical Modules Support Them

Understanding how these network types relate to optical technology is becoming increasingly important in the era of cloud computing, edge infrastructure, hyperscale data centers, and generative AI. In this

[Contact Us](#)

Ultimate AOC Cable Guide: Active Optical Cables

In this guide, we will explore what an AOC cable is, how active optical cables work, their benefits, drawbacks, use cases, selection criteria, and best



[Contact Us](#)



Optical Fiber ROAD LIFE , SFP vs SFP+: "Can anyone tell me

Here's a quick breakdown: ? SFP (1G) - Up to 1 Gbps ? SFP+ (10G) - Up to 10 Gbps ? SFP28 (25G) - 25 Gbps high-speed connections ? QSFP+/QSFP28 - 40G/100G for data center environments ? By

[Contact Us](#)

The Most Comprehensive Guide Of Optical Modules

Explore the ultimate guide to optical modules. Learn types, functions, performance metrics & how to choose the right module for your fiber network.

[Contact Us](#)



High-Performance Connectivity: The Definitive Guide to CQP-85100G

Discover the details of High-Performance Connectivity: The Definitive Guide to CQP-85100G-SR4 100G QSFP28 SR4 Optical Transceivers at LonRise Equipment Co. Ltd., a leading

[Contact Us](#)

SFP+, SFP28, QSFP+, QSFP28, QSFP56, QSFP-DD,

The optical transceiver plays a crucial role in modern fiber networking. Various high-speed transceiver types are on the market, including SFP+, SFP28,

[Contact Us](#)





QSFP 100G DR Guide for High-Speed Data Center Connectivity

From cloud computing to AI clusters and enterprise data centers, 100G connectivity has become a critical foundation. Among the many available optical transceiver options, QSFP 100G DR

[Contact Us](#)



OEM 100G QSFP28 & 200G QSFP56, QSFP-DD, CFP2

Direct OEM/ODM manufacturer of 100G/200G transceivers for AI clusters & hyperscale cloud. 100% tested 100G QSFP28, 200G QSFP56, QSFP-DD & CFP2 solutions.

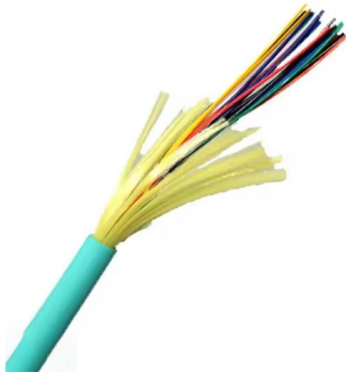
[Contact Us](#)



Selecting the Perfect 100G Optical Module Packaging:

This article aims to demystify the process, providing a practical guide to help you make informed decisions in this "light-speed" race. What Is a 100G

[Contact Us](#)



Check Point CPAC-TR-10SR-C Price Analysis & Sourcing

Explore CPAC-TR-10SR-C price trends, cost factors, and sourcing options. Learn how to evaluate suppliers and optimize optical transceiver investment.

[Contact Us](#)





25GbE fiber: practical guide to 25G SFP28 transceivers for enterprise

A practical, field-ready guide on 25GbE fiber and 25G SFP28 transceivers for enterprise and cloud deployments, with real-world scenarios, specs, and a

[Contact Us](#)



25G SFP28 Optical Transceivers , SR, LR, ER - Universal Compatibility

Explore 25G SFP28 optical transceivers compatible with Cisco, Huawei, Juniper, Arista, and more. Choose SR, LR, and ER modules for diverse network requirements.

[Contact Us](#)



SFP28 25G LR Transceiver: Complete Guide for 25G Ethernet

Whether you are upgrading a data center network, deploying 25G spine-leaf architecture, or evaluating third-party optics, this guide will help you determine if an SFP28 25G LR module is the right choice

[Contact Us](#)

What is an SFP Optical Module? The Complete Guide to

The complete technical guide to SFP optical modules (SFP, SFP+, SFP28). Understand the core function, compare data rates (1G to 25G), learn

[Contact Us](#)





What Is QSFP28? A Clear Explanation of 100G Transceivers

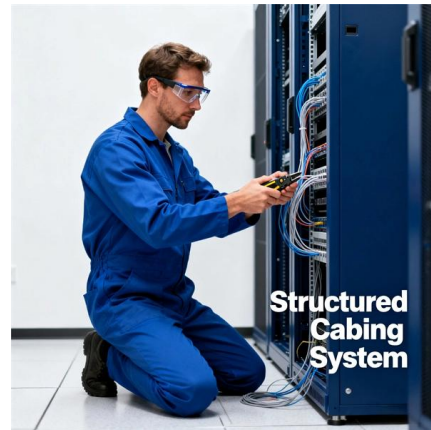
Learn what QSFP28 is, how 100G transceivers work, key standards, module types, and common deployment scenarios in modern data center networks.

[Contact Us](#)

SFP28 SR vs. LR -- How to Choose the Right 25G Module

Compare SFP28 SR vs. LR transceivers for 25G Ethernet. Learn differences in distance, fiber type, cost, and use cases for data centers, campus networks, and 5G fronthaul deployments.

[Contact Us](#)



QSFP DD

These transceivers are commonly used in high-performance computing, cloud data centers, and enterprise networking environments where high bandwidth, low latency, and scalability are critical.

[Contact Us](#)

25G SFP28 SR Transceivers: 2025 Buyer's Guide & Tech Insights

Upgrade confidently with our 25G SFP28 SR guide. Covers specs, use cases, vendor compatibility, and cost-saving tips for data centers & 5G networks.

[Contact Us](#)





An In-depth Guide to 25G SFP28 Optical Transceiver

Discover the advantages, specifications, and applications of 25G optical transceiver solutions--for high-speed data center, enterprise, and telecom networks.

[Contact Us](#)

5G Fronthaul 25G SFP28 Optical Module Selection Guide , Langzhi

Complete guide to selecting 25G SFP28 optical modules for 5G fronthaul networks. Compare SR, LR, ER, BiDi, and CWDM types covering transmission distance, wavelength, power



[Contact Us](#)

Understanding Optical Transmission Windows: A Complete Guide for

In fiber-optic communication, signal integrity and transmission distance are influenced by one core factor: wavelength. Optical transmission windows define the optimal frequency ranges

[Contact Us](#)



Contact Us

For datasheets, pricing, or custom fiber access solutions, please visit:
<https://www.frindel.es>