

Sdh short-distance optical module optical attenuation





Sdh short-distance optical module optical attenuation



telecomtrainingpro

Hier sollte eine Beschreibung angezeigt werden, diese Seite lässt dies jedoch nicht zu.

[Contact Us](#)

Overview-of-SONET-SDH-Technology-Presentation

The optical counter part for each STS-N signal is designated as OC-N (Optical Carrier level-N) SDH is the Asian and European standard (termed STM-N) defined in ITU G.707 and G.708 standard

[Contact Us](#)



1G SONET/SDH SFP Transceiver Modules Data Sheet , FS

SFP-2GSR-85 Module is a high performance, cost effective module which have a Duplex LC optics interface. Standard AC coupled CML for high speed signal and LVTTTL control and monitor

Going the Distance: The Tech Behind Long-Haul Fiber

Long-haul transmission uses fiber optic cables to send data quickly and securely over long distances, connecting cities and countries for fast

[Contact Us](#)



Motor protection controller



Optical Fiber Networks

Factor Affecting Performance of Optical Fiber Transmission Attenuation (reduction in strength of signal): decrease the transmission distance, measure in dB/Km

[Contact Us](#)

Signal Attenuation in Long-Distance Optical Modules: A Complete Guide

Optimizing Attenuation in Long-Distance Optical Modules: A Key to Reliable Fiber Communication
In optical fiber communication, the attenuation operation for long-distance modules

[Contact Us](#)



SDH Telecommunications Standard Primer

SDH was first introduced into the telecommunications network in 1992 and has been deployed at rapid rates since then. It's deployed at all levels of the network infrastructure, including the access network

[Contact Us](#)





Synchronous Digital Hierarchy (SDH)

Synchronous digital hierarchy (SDH) and synchronous optical network (SONET) refer to a group of fiber-optic transmission rates that can transport digital signals with different capacities. This tutorial

[Contact Us](#)



Synchronous Digital Hierarchy (SDH) - SolveForce Communications

Synchronous Digital Hierarchy (SDH) is a standardized technology used for high-speed, synchronous optical communication over fiber-optic networks. SDH is closely related to Synchronous Optical

[Contact Us](#)

Attenuation in Optical Fibers: A Comprehensive Guide

Attenuation = $1.5 \times 1.75 = 2.625$ dB 4. Key Mechanisms Rayleigh Scattering: Dominates at short wavelengths ($\propto 1/\lambda^4$). Limits theoretical loss to

[Contact Us](#)



Synchronous Optical Network (SONET)

Synchronous optical network (SONET) is a standard for optical telecommunications transport. It was formulated by the ECSA for ANSI, which sets industry standards in the United States for

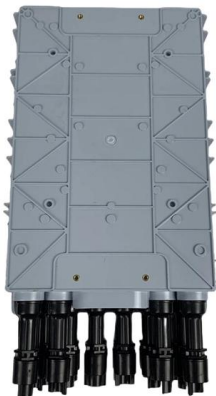
[Contact Us](#)



SFP modules - transceivers for 1/2/4G fibre channel

SFP - small form factor - pluggable modules for various optical data communications such as Fast Ethernet, Gigabit Ethernet, BiDi, SDH Sonet and 4G.

[Contact Us](#)



Cisco SFP Optics For Packet-Over-Sonet/SDH and ATM Applications

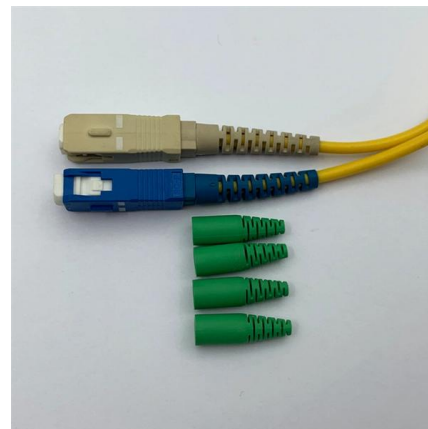
The Cisco industry-standard Small Form-Factor Pluggable Interface Converter (SFP) for Packet-Over-SONET/SDH (POS), optical networking, and ATM applications (Figure 1) are hot-swappable optical

[Contact Us](#)

Synchronous optical networking

Synchronous Optical Networking (SONET) and Synchronous Digital Hierarchy (SDH) are standardized protocols that transfer multiple digital bit streams synchronously over optical fiber using lasers or

[Contact Us](#)



Mastering SDH in Optical Communications

Explore the fundamentals and applications of SDH in modern optical communications, enhancing network efficiency and reliability.

[Contact Us](#)





Optical time-domain reflectometer

An optical time-domain reflectometer (OTDR) is an optoelectronic instrument used to characterize an optical fiber. It is the optical equivalent of an electronic time domain reflectometer which measures

[Contact Us](#)



FEATURES:

Description: The SFP modules are high performance, cost effective for serial optical Tel communications applications that range from 125 Mb/s to 622 M b/s. They are designed to provide SONET/SDH

[Contact Us](#)

Synchronous Digital Hierarchy (SDH) Graphical Overview

Introduction This document provides an overview of Synchronous Digital Hierarchy (SDH) represented in images.

[Contact Us](#)



SONET/SDH OC48/STM16 Optical Interface Specifications

Table 4: SONET/SDH OC48/STM16 Long Reach (LR-2) Optical Interface Specifications

[Contact Us](#)



Rec. G.957 (34 pp of MSS) (Cl. 17)

2 Classification of optical interfaces It is expected that optical fibres will be used in SDH-based systems for both inter-office transport between stations and in intra-office applications for connecting

[Contact Us](#)



Rec.G.957

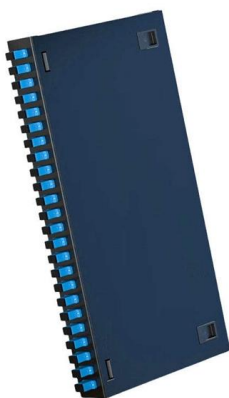
For SDH networks utilizing optical amplifiers, a transmitter with appropriate spectral characteristics is necessary to achieve target distances exceeding those defined for long-haul applications.

[Contact Us](#)

What is Synchronous Optical Network (SONET)?

Synchronous Optical Network (SONET) is a North American standardized digital communication protocol for synchronous data transmission

[Contact Us](#)



SONET and SDH: A Comprehensive Tutorial

Explore SONET and SDH, physical layer standards for optical fiber communication. Learn about HDLC framing, key terminologies, rates, and the SONET STS-1 SDH

[Contact Us](#)



Synchronous Digital Hierarchy (SDH)

Synchronous Digital Hierarchy (SDH) Definition
Synchronous digital hierarchy (SDH) and synchronous optical network (SONET) refer to a group of fiber-optic transmission rates that can transport digital

[Contact Us](#)



SDH (Synchronous Digital Hierarchy): What Is It, How It Works

SDH, short for Synchronous Digital Hierarchy, is a standardized protocol used in fiber optic networks to transmit voice, data, and video traffic.

[Contact Us](#)

Contact Us

For datasheets, pricing, or custom fiber access solutions, please visit:
<https://www.frindel.es>