

# **Samoa Power Distribution Box Dimensions**





## Samoa Power Distribution Box Dimensions

---



### Explore Power Distribution Box Types and Functions

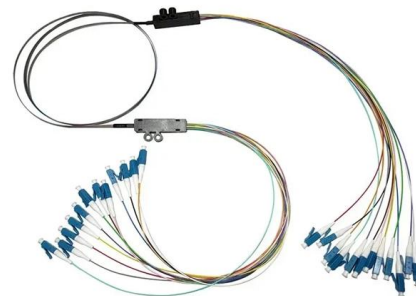
Power distribution boxes are used in commercial and residential buildings and are part of the electrical system, also known as switchboards.

[Contact Us](#)

### Samoa HXGN15-12 Type Ring Main Unit

Samoa Modular Substation Samoa Outdoor Ring Main Unit Samoa Box-type Substation Samoa Lighting Distribution Box Samoa Power Switchgear

[Contact Us](#)



### Power Distribution Panel In Samoa

Being one of the leading Power Distribution Panel Manufacturers in Samoa, we work for customer satisfaction and design and deliver the standard and customized range accordingly. We have a

[Contact Us](#)

### Energy Accounts, Samoa

Energy Accounts, 1. Introduction This publication is the 2nd Energy Accounts ever produced, following the compilation of the first Experimental Energy Account for Samoa using the 2016 Samoa Energy



**Samoa ZBW Type Prefabricated Substation-Dongfeng-covering**

ZBW type prefabricated substation is a complete set of distribution equipment that combines high-voltage switchgear, distribution transformers, low-voltage switchgear, electric energy metering

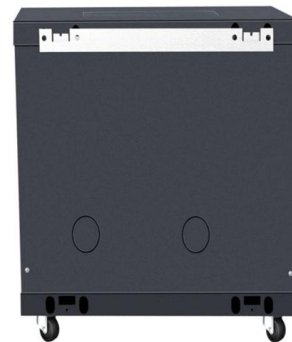
[Contact Us](#)



**HISTORY OF EPC**

To date, works continue for further developments of its existing generation and distribution network. As mandated to generate, distribute and sell electricity supply to all of Samoa, the EPC has connected

[Contact Us](#)



**American Samoa Power Authority P.O. Box PPB Pago Pago, American Samoa**

American Samoa Power Authority Box PPB Pago Pago, American Samoa 96799 Telephone: (684) 699-3057 Email: [procurement@aspower](mailto:procurement@aspower) Website:

[Contact Us](#)

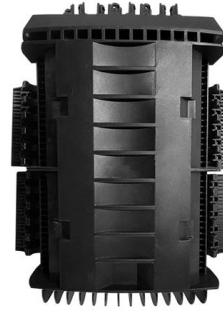




## Samoa Dongfeng-covering various types of distribution boxes

Dongfeng-covering various types of distribution boxes City product details\_4 rich and diverse product system, covering various types of distribution boxes and cabinet products.

[Contact Us](#)



## POLE MOUNTED DISTRIBUTION TRANSFORMER BID

AMERICAN SAMOA POWER AUTHORITY POLE MOUNTED DISTRIBUTION TRANSFORMER BID SPECIFICATIONS 1.

[Contact Us](#)

## American Samoa Power Strips , American Samoa PDU Power

American Samoa power strips and PDU power distribution units for surface mount, rack mount and general purpose applications. Multiple outlet power strips are manufactured in accordance to

[Contact Us](#)



## Electrical Box Dimensions Manufacture

Linkwell offers a wide range of electrical box dimensions, so you can always find the right fit for your industrial or commercial project. Tip: Always

[Contact Us](#)



## Grid Code

Enquiries to: The General Manager Electric Power Corporation Level 5, Tui Atua Tupua Tamasese Efi Building PO Box 2011 Apia Samoa Phone: (+685) 65 548 Email: [epc@epc.ws](mailto:epc@epc.ws)

[Contact Us](#)

PRODUCT CATEGORY				
Open rack Series	Open Heavy rack	12U Aspet open rack	18" Deepen Wall rack	Adjustable Depth Open rack
Wall mount rack Series	Glass door Wall mount rack	Mesh door Wall mount rack	Double section Wall mount rack	Economic type Wall mount rack
Floor standing server rack	Glass door with casters	Mesh door with casters	42U Standard Server rack	Double open door Server rack
Outdoor cabinet	A/C conditioner Outdoor cabinet	Outdoor cabinet with plinth	Outdoor cabinet with fan cooling	Double Wall Outdoor cabinet
Splitter series	Bare Fiber Splitters	Blackless Fiber Splitters	ABS Splitter	Fanout Splitters
Splitter series	LCX Splitters	Rack Mount Splitters	Mix Plug-in Type Splitter	Tray Splitters
Patch cord series	LCX	SC	FC	LC
FTTH product series				

## Samoa Low Voltage Switchgear-City Product Center\_4-Dongfeng

Samoa MNS Low Voltage Withdrawable Switchgear Widely used in power generation, construction, steel, cement, mining, petrochemical, and other power supply and distribution systems

[Contact Us](#)



## Samoa Power Strips , Samoa PDU Power Distribution Units, Multiple

Samoa power strips and PDU power distribution units for surface mount, rack mount and general purpose applications. Multiple outlet power strips are manufactured in accordance to Samoa

[Contact Us](#)



## AMERICAN SAMOA POWER AUTHORITY

Contract contains legally binding provisions governing the Contractor and the Contractor's work during the construction and warranty period. Certain definitions pertaining to measurements and

[Contact Us](#)



## Grid Code

While EPC will take a flexible approach when considering such requests, it is important to note that there are practical limits to the peak power capacities of third party generation plant that may be suited for

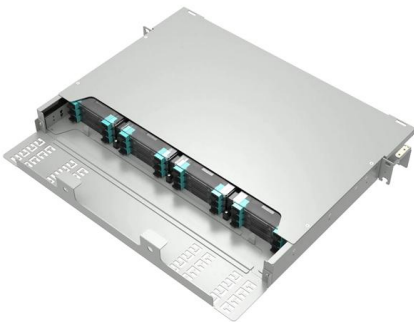
[Contact Us](#)



### Samoa Single-phase pole-mounted transformer

Supply of pole-mounted transformers. Includes single-phase and three-phase pole-mounted transformers. Can reduce the length of low-voltage distribution lines, decrease line losses, and

[Contact Us](#)



### Size determination, installation method and wiring mode

The distribution box is the central hub of the home circuit and the general control of our daily power consumption. It is an indispensable electrical equipment. If there

[Contact Us](#)



### Samoa Landscape Environmentally Friendly Box-type Substation

The landscape and environmentally friendly box-type substation has a high voltage rated voltage of 10kV and a low voltage side rated voltage of 0.4kV; the 10kV incoming and outgoing lines can be

[Contact Us](#)





## Samoa: Transmission and Distribution Upgrade

The Asian Development Bank (ADB) has supported the Government of Samoa and the Samoa Electric Power Corporation (EPC) to upgrade the transmission and distribution system in Samoa.

[Contact Us](#)



## ELECTRIC POWER CORPORATION

Electric Power Corporation PO Box: 2011 This safeguard report is prepared by the Project Management Unit of the Electric Power Corporation for the Government of Samoa and the Asian Development

[Contact Us](#)



## Eaton XBoard Distribution Box

The Power of Eaton Eaton's power distribution systems are designed to be as compact and energy efficient as possible while easy access for installation, operation and maintenance. Medium and Low

[Contact Us](#)



Distribution box Rubber Handy 6 Robust full rubber housing, impact resistant, oil-, UV- and acid resistant. Protected with a ground fault interrupter and circuit breaker. All protections covered by

[Contact Us](#)

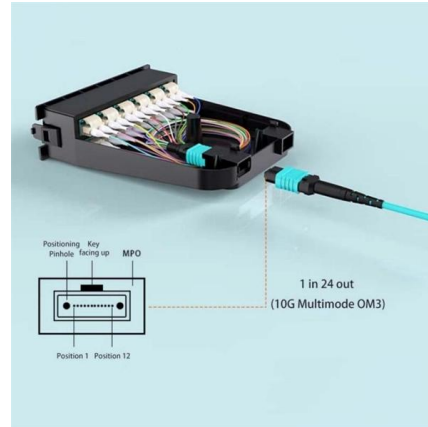




## Samoa MNS Low Voltage Withdrawable Switchgear

MNS is a low-voltage switchgear assembled in the factory using standard modules. It is suitable for AC 50/60Hz, rated operating voltage below 660V, and rated current up to 6300A in power distribution

[Contact Us](#)



## Samoa: Transmission and Distribution Upgrade

ADB has supported the Government of Samoa and the Samoa Electric Power Corporation to upgrade the transmission and distribution system in Samoa. This

[Contact Us](#)

## Contact Us

For datasheets, pricing, or custom fiber access solutions, please visit:  
<https://www.frindel.es>