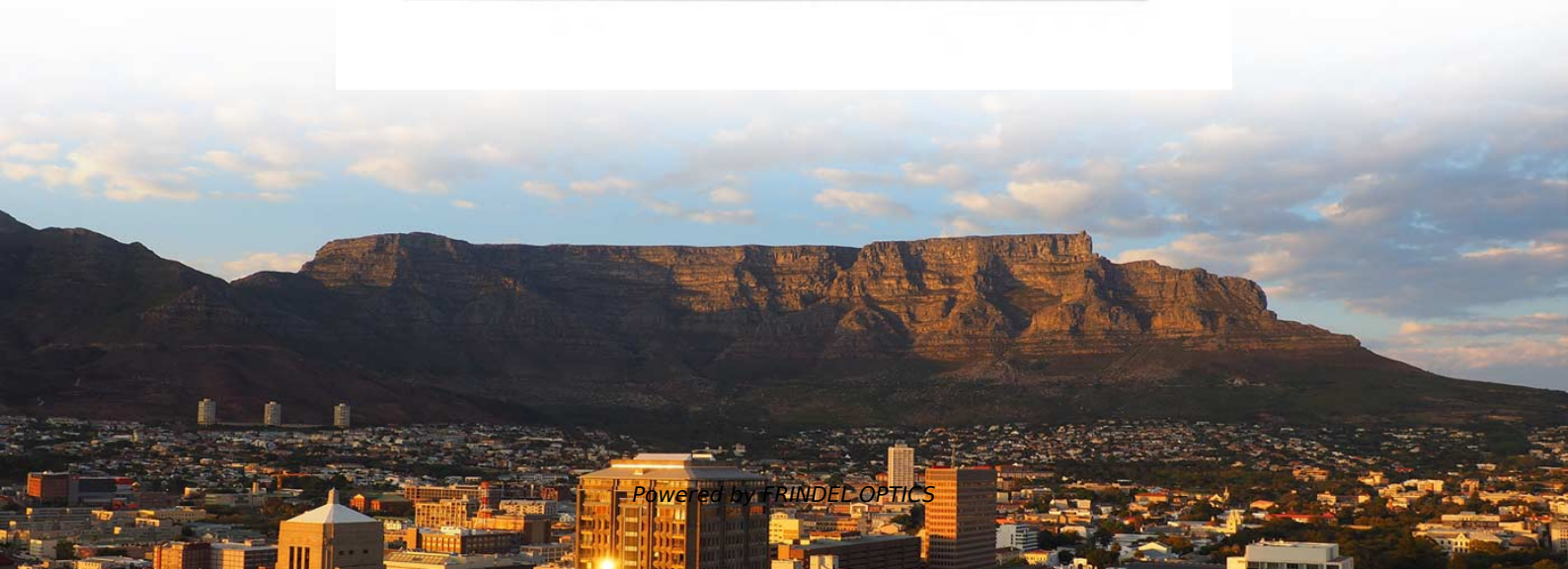


# **Requirements for the thickness of the protective layer of cable trays**





## Overview

---

Carbon steel used for cable trays shall be protected against corrosion by the following processes: Hot-dip galvanized zinc after fabrication in accordance with ASTM A123/A123M, Coating Grade 65 with an average zinc coating weight of 460 g/m<sup>2</sup> per side or coating thickness of 0. The mechanical and electrical characteristics, tests, certifications, overall quality management, recommendations mentioned in this technical guide only apply to our own cable management ranges and cannot under any circumstances be transposed to si osure, overheating or. Mechanical Strength The cable tray must withstand the load of cables, environmental factors, and external pressure. Is your cable tray system optimized for safety, dependability, space and cost savings?

Cable tray (or cable ladder) systems are a popular alternative to electrical conduit systems, as they have an outstanding record for dependable service, design flexibility and cost savings in commercial and. maintain spacing or to keep cables in place when the tray is ect the minimum bend ra-dius for cables as they exit the bottom of the cable tray. When the width of the molded enhanced ladder frame in the thickness standard is greater than 150mm and less than or equal to 400mm, the thickness of the side plate should be at least 1.



## Requirements for the thickness of the protective layer of cable tray

---



### CLASSIFICATION NOTES

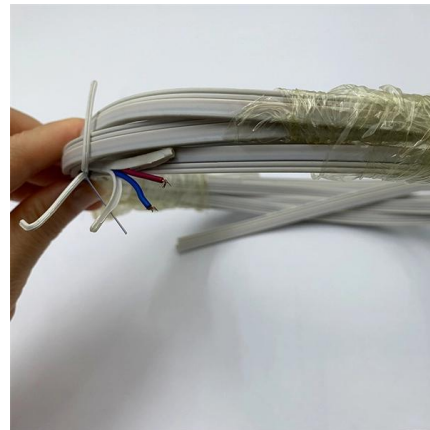
Cable trays/protective casing and joints should be assigned a Safe Working Load (SWL) satisfying the following criteria, tested at the declared temperatures according to 1.2 above (See note):- the

[Contact Us](#)

### Technical Guidelines for Cable Tray Installation and

Outdoor: Hot-dip galvanized or stainless steel trays. Corrosive/High Humidity: Aluminum alloy or fiberglass-reinforced plastic trays. Based on Load Capacity:

[Contact Us](#)



### Cable Tray Size Calculation for Project Engineers

Cable trays are essential for organizing and supporting electrical and communication cables, as well as assuring safe installations. Choosing the

[Contact Us](#)



### Compliance Requirements for Instrument Cable Trays

Installing instrument cable trays properly and in compliance with relevant standards is crucial to ensure safety, functionality, and durability. Below is a detailed guide



### 12-SDMS-06

This SEC Distribution Material Specification requirements for design, materials, manufacturing, indoor/outdoor Metallic Cable Tray System, intended to be used in the distribution network of the

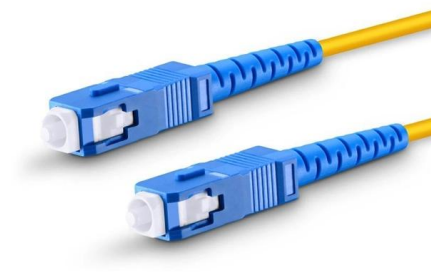
[Contact Us](#)



### Precautions for Cable Tray Installation

The overall layout of the cable tray should be short distances, economic feasibility, safe operation, and meet the requirements for construction, maintenance, and

[Contact Us](#)



### Technical Guidelines for Cable Tray Installation and

Select the tray width and thickness according to the number and weight of cables. Ensure mechanical strength is sufficient to prevent deformation or failure under

[Contact Us](#)





## GUIDE CABLE TRAYS TECHNICAL

Specifies requirements for metal cable trays and associated fittings designed for use in accordance with the rules of Canadian Electrical Code, Part I and the National Electrical Code®

[Contact Us](#)



## 12-SDMS-06

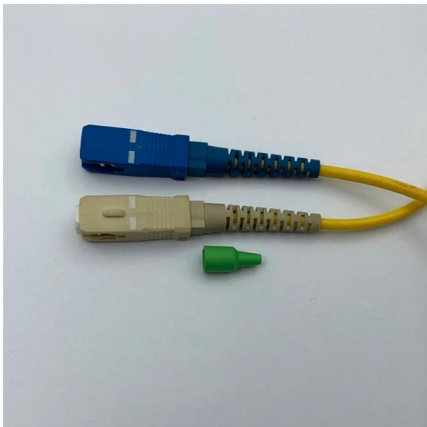
4 Design and Construction Requirements 4.1 General 4.1.1 Metallic cable trays shall specification in all respects. 4.1.2 The Metallic cable trays shall be manufactured in accordance with NEMA VE-1

[Contact Us](#)

## LEGRAND CABLE TRAYS TECHNICAL GUIDE

Specifies requirements for metal cable trays and associated fittings designed for use in accordance with the rules of Canadian Electrical Code, Part I and the National Electrical Code®

[Contact Us](#)



## LEGRAND CABLE TRAYS TECHNICAL GUIDE

Not all cable trays are equivalent. The mechanical and electrical characteristics, tests, certifications, overall quality management, recommendations mentioned in this technical guide only apply to our

[Contact Us](#)



## Essential Cable Tray Standards: Your Guide to Compliance & Safety

In this guide, we will explore essential cable tray standards and offer insights into compliance and safety measures. Significance of Compliance  
Compliance with cable tray standards is not just about

[Contact Us](#)



### Cable Tray Width, Dimensions and Specifications as per

Learn about cable tray width dimensions and specifications as per NEC standards. Understand types, sizes, materials, and installation guidelines for safe and

[Contact Us](#)

### Cable Tray Technical Guide A practical guide to product selection and

This guide for engineers and installers has been developed by ABB as a practical reference regarding cable tray characteristics, installation, and requirements.

[Contact Us](#)



### The Standard for Cable Trays: How to Ensure Safe

Cable trays are essential components of electrical power and data communication systems that provide safe and reliable routing, support, and protection of cables

[Contact Us](#)



## CABLE TRAYS / PROTECTIVE CASINGS MADE OF PLASTICS

Note : \* Consideration will be given to the use of plastic cable trays/protective casings in the cold environment where the ambient temperature is below - 25°C provided the mechanical properties of

[Contact Us](#)



## Fireproof Cable Trays Acceptance: Standards for Safety

Ensure safety and durability with this comprehensive guide to fireproof cable trays acceptance. Learn coating processes, inspection standards, and

[Contact Us](#)

## CABLE TRAYS GENERAL INFORMATION AND

Installation and maintenance of cable tray systems shall be conducted only by qualified personnel and responsible persons should be trained properly. During

[Contact Us](#)



## Cable Tray Technical Guide A practical guide to product selection and

Cable Tray Technical Guide A practical guide to product selection and installation This guide for engineers and installers has been developed by ABB as a practical reference regarding cable tray

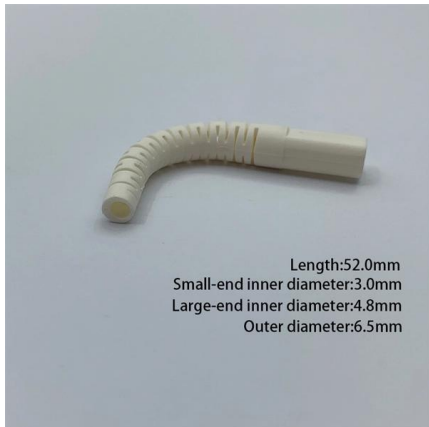
[Contact Us](#)



## Best Practice Guide to Cable Ladder and Cable Tray Systems

Cable ladder systems and cable tray systems are designed for use as supports for cables and not as enclosures giving full mechanical protection. They are not intended to be used as ladders, walk ways

[Contact Us](#)



## 100+ Essential Questions Answered About Cable Trays:

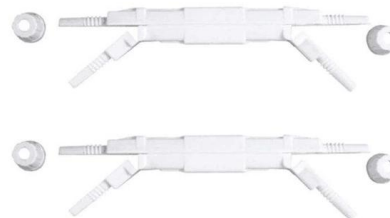
Cable trays, as an important component of modern building electrical systems, play a crucial role in supporting and protecting cable lines, ensuring

[Contact Us](#)

## IEC Standard for Cable Tray: Complete Technical Guide

All trays must undergo salt spray tests and coating thickness tests to ensure the coatings meet the durability levels required under the IEC standard for

[Contact Us](#)



## The latest national standard for cable tray, different

There are many national standards for cable tray, and the technical specification of T/CECS 31-2017 steel cable tray is the latest standard, in which different

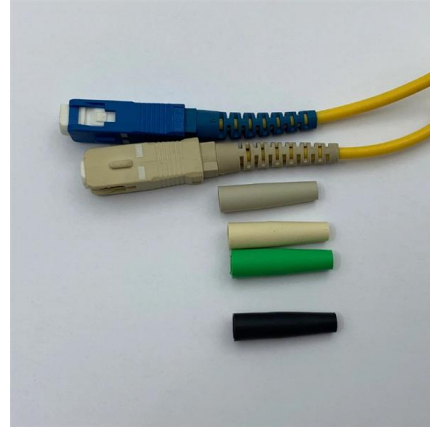
[Contact Us](#)



## Best Practice Guide to Cable Ladder and Cable Tray Systems

These guidelines will be particularly useful for the design, specification, procurement, installation and maintenance of these systems. Cable ladder systems and cable tray systems are designed for use

[Contact Us](#)



## Cable Tray Systems: Requirements and Best Practices

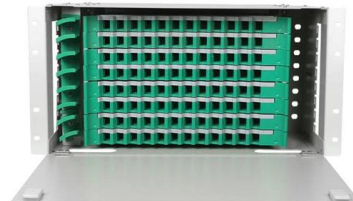
This article explains the main requirements and good practices for cable tray systems, including tray types, materials, loading, supports, bonding, cable selection, and installation details.

[Contact Us](#)

## B-Line series Cable Tray Design Considerations

Snow load is measured by density and thickness, and it can be significant for a cable tray that is completely full of cables or a cable tray that has covers. The density of snow varies greatly due to its

[Contact Us](#)



## Cable Tray Systems: Requirements and Best Practices

Comprehensive guide to cable tray systems requirements: tray types, materials, loading, supports, bonding, routing, and best practices for safe electrical cable management.

[Contact Us](#)



## A Guide to Installing and Supporting Electrical Cable Trays

A professional guide to installing electrical cable tray systems per NEC Article 392. Covers support, securing cables, and fill calculations.

[Contact Us](#)



## IEC Standard for Cable Tray: Complete Technical Guide

IEC Standard for Cable Tray: Complete Technical Guide The International Electrotechnical Commission (IEC) provides detailed guidelines for

[Contact Us](#)

## Contact Us

---

For datasheets, pricing, or custom fiber access solutions, please visit:  
<https://www.frindel.es>