

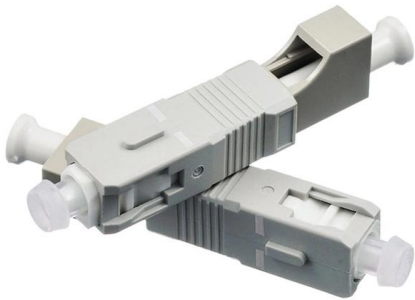
# **Removal and installation of operating handle for explosion- proof distribution box**





## Removal and installation of operating handle for explosion-proof di

---



### Energy Distribution

Energy Distribution Reliable operations in demanding environments BARTEC designs and produces customer-specific (configure-to-order and engineer-to

[Contact Us](#)

### Principles for Connecting Explosion-Proof Distribution

Explosion-proof systems, especially in hazardous environments, demand a meticulous approach to ensure safety and compliance with regulations. This

[Contact Us](#)



### Explosion

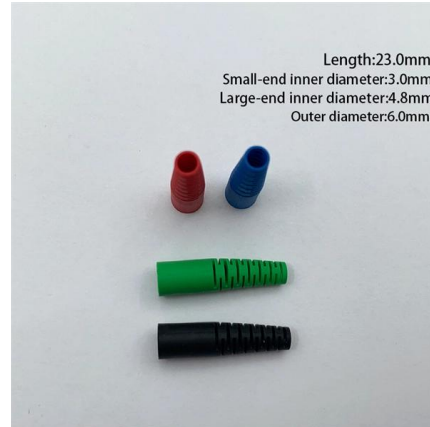
The enclosure with hinges and handle, convenient for installation and maintenance. Protect the flame-proof surface when operating. The enclosures can be combined and installed to meet the various

[Contact Us](#)



### Control panels , Distribution boards , Ex , Ex d , Ex de , ATEX

With our in-depth expertise and many years of experience, R. STAHL is the perfect partner for explosion-protected power distribution in any instrumentation and control engineering, battery



### Installation Precautions for Explosion-Proof Junction Boxes

Avoid opening the box while it is energized to prevent electrical hazards. These guidelines aim to assist in the effective and safe installation of our

[Contact Us](#)

### Requirements And Specifications For Installation Of

A leakage protector should be installed in the distribution box to provide additional safety protection. Installation requirements in special

[Contact Us](#)



### Explosion-proof Distribution Box

China Explosion-proof Distribution Box catalog of Exd Explosion Prevention Exe Aluminum Alloy Junction Box Explosion-Proof Threading Straight Box Ex Seal Wire Box, Explosion-Proof Type a

[Contact Us](#)

### Installation and Wiring of High and Low



## Voltage Explosion-Proof

Generally, professional electricians should handle the wiring of explosion-proof distribution boxes, as they possess the necessary skills and safety equipment. In non-urgent cases,

[Contact Us](#)



## Explosion-Proof Distribution Box Faults and Solutions

2. After the installation of the explosion-proof distribution box, it rarely stops running once it starts working. Due to the long period without opening, the

[Contact Us](#)

## Explosion-Proof Electrical Distribution Boxes: Applications in

Explosion-proof electrical distribution boxes are essential for safety in hazardous environments. These specialized enclosures are built to contain internal explosions and stop the ignition of flammable

[Contact Us](#)



## How to Install Explosion-Proof Distribution Box

Regularly inspect the explosion-proof distribution box for any damage to components. The installation inclination of the distribution box should not

[Contact Us](#)





### Precautions for installation of explosion proof power distribution box

3. Explosion proof distribution box and switch box shall be installed in ventilated, dry and normal temperature places. It is strictly forbidden to install it in the gas, smoke, steam, liquid and

[Contact Us](#)



### Explosion proof distribution box standards and installation issues

Consequence: The installation elevation of the lighting explosion-proof distribution box (panel) does not comply with the regulations, the installation is not firm, and the box is not vertical.

[Contact Us](#)

### Explosion proof Power Distribution Panel Box

Power Distribution panel box - Hazardous locations for explosive gas mixtures: Zone 1 and Zone 2. Explosive gas mixtures: Class IIA, IIB, and IIC.

[Contact Us](#)



### Explosion Proof Enclosure Comprehensive Guide

Explosion-Proof Distribution box: These smaller components are structurally similar to distribution cabinets. You can use these for the distribution

[Contact Us](#)



## Installation & Maintenance Instructions Junction Box Enclosures FM,

GENERAL: Observe all cautions for installation and use of CCS pressure, temperature sensors contained on the CCS catalog B declaration. Follow all applicable federal, state government or

[Contact Us](#)



## Explosion Proof Distribution Box & Electrical Enclosures

Durable Hexlon Explosion Proof Distribution Boxes and Electrical Enclosures, IECEx and ATEX certified for Zone 1 and Zone 2.

[Contact Us](#)

## Microsoft Word

Apart from that, the correct functioning and installation of the apparatus in accordance with these operating instructions and other applicable regulations will have to be checked.

[Contact Us](#)



## JBDB-IM-16-001-JBDB Junction (Terminal) Box Instructions Manual

This manual details the installation, operation and maintenance instructions for type JBDB Junction/Terminal Box (flameproof). This product is ATEX and IECEx certified to meet the

[Contact Us](#)



## HRMD91 Explosion proof Distribution Box (Ex d IIB+H2)

HRMD91 Explosion proof Distribution Box  
Explosion protection to - IEC - CENELEC - NEC  
Can be used in Zone 1 and Zone 2 Zone 21 and  
Zone 22 Class I, Zone 1

[Contact Us](#)



## How to Wire an Explosion-Proof Distribution Box and

Explosion-proof electrical equipment, such as explosion-proof distribution boxes, is specifically designed for hazardous environments where flammable gases,

[Contact Us](#)



## Installation Guide Explosion

Do not place the device in extremely hot, cold (the operating temperature shall be  $-40^{\circ}\text{C}$  to  $+60^{\circ}\text{C}$ ), or damp locations, and do not expose it to high electromagnetic radiation.

[Contact Us](#)



## REMOVE/INSTALL EXPLOSION PROOF DISTRIBUTION BOX

Tag and disconnect all terminal wires. b. Remove four panel mounting screws. Carefully withdraw mounting panel to gain access to junction box interior. c. Remove four terminal board screws, flat

[Contact Us](#)

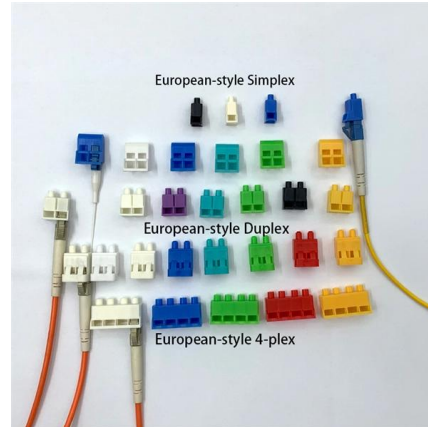




## Explosion-Proof Distribution Box , Product Center

Explosion-proof distribution boxes are designed to safely control and distribute electrical power in hazardous environments, preventing ignition risks.

[Contact Us](#)



## Explosion Proof Illumination Distribution Boxes (With

Flameproof and explosion proof, these power overhaul distribution boxes are suitable for use in hazardous areas. Specs: Ex mark: Ex de IIC T4 Gb DIP A21 TA,T4

[Contact Us](#)

## Contact Us

For datasheets, pricing, or custom fiber access solutions, please visit:  
<https://www.frindel.es>