

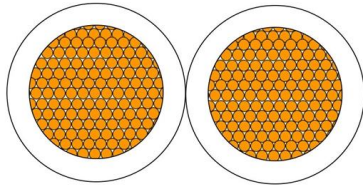
# **Related diagrams of 35kV busbar bushings**





## Related diagrams of 35kV busbar bushings

---



### Copper for Busbars - Guidance for Design and Installation

For busbar systems, the maximum working current is determined primarily by the maximum tolerable working temperature, which is, in turn,

[Contact Us](#)

### Shaping and connecting rigid busbars in low voltage switchgear

Busbars - machining, bending and shaping The busbars constitute the real "backbone" of every low voltage switchgear. The main busbar and branch busbars supply and distribute the

[Contact Us](#)



### 35-kV Apparatus Bushings

5-kV Connectors (Elbows) Elliott "B" Series (bolt-in) apparatus bushings are used to construct air-insulated equipment that connects to the utility's underground shielded cable system with IEEE

[Contact Us](#)



### 600 A 35 kV class deadbreak apparatus bushing

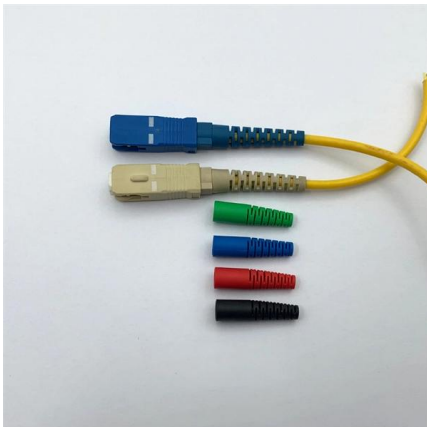
All 600 A separable connectors manufactured according to IEEE Std 386TM-2006 will operate with this bushing. The epoxy bushings are designed for sidewall mounting in transformers, switches, and



**Heat shrink tubes for insulation of busbars with voltage**

Heat shrink tubes ???-35 - specialized high-voltage dual-walled tube with shrink ratio 2.5: 1, without the suppression of combustion, designed to isolate the copper

[Contact Us](#)



**Agrawal-29New**

29.1 Precautions in mounting insulators and conductors Often a failure on a fault may be due not to the inadequate size of busbars, fasteners or insulators but to poor alignment of the insulators or to too

[Contact Us](#)



**600 A 35 KV Class Deadbreak Apparatus Bushing:**

600a-35kv-class-deadbreak-apparatus-bushing-ca800020en - Free download as PDF File (.pdf), Text File (.txt) or read online for free.

[Contact Us](#)





## High Voltage Wall Bushing

High voltage wall bushings for power stations are suitable for use in power stations, substations and electrical equipment of 35kV and below, for

[Contact Us](#)



## LYC217 35kV Insulation Bushing for Switchgear Panels

Our 35kV High Voltage Epoxy Resin Bushing is designed for use in medium and high-voltage electrical equipment, including switchgear, transformers, and circuit

[Contact Us](#)

## Non-Segregated phase bus duct

For over 30 years, Eaton's non-segregated phase bus duct has been designed to meet specific installation requirements for reliable power distribution. Typical of such applications are the

[Contact Us](#)



## 35KV heat shrink bus bar tubing BH-BBT-35KV

BH-BBT-35KV 35KV heat shrink bus bar tubing provides high resistance to tracking and arching and used to enhance the insulation properties of bus bar in

[Contact Us](#)

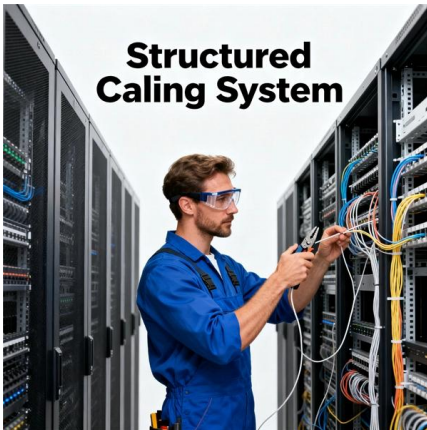


## 35 kV BUSHING INSERT SMALL INTERFACE



200A 35KV BUSHING INSERT SMALL INTERFACE  
CONTENTS ARE CONFIDENTIAL AND THE  
EXCLUSIVE PROPERTY OF HUBBELL POWER  
SYSTEMS. NO PUBLICATION, DISTRIBUTION

[Contact Us](#)



### Power Applications Using High-force Press-Fit

The full integration of busbars within power applications by using pluggable, high-force, press-fit technology can significantly improve power efficiency, reduce the bill-of-material costs, decrease

[Contact Us](#)

### Busbar

In electric power distribution, a busbar (also bus bar) is a metallic strip or bar, typically housed inside switchgear, panel boards, and busway enclosures for

[Contact Us](#)



### TRANSFORMER BUSHINGS

Condenser bushings manufactured by TELK arc self contained hemlctically scaled and hence practically maintenance free. Ilowever failure of bushings can cause costly power breakdown and hence to

[Contact Us](#)





## Design and installation of low voltage busbar trunking

Cable jointer not required. Busbar trunking systems may be dismantled and re-used in other areas. Busbar trunking systems provide a better

[Contact Us](#)



## 35kV 200kV BIL Bushing Extender

35kV 200kV BIL Bushing Extender Product Data Sheet Richards 35kV 600A (P635BE-200) and 900A (P935BE-200) Bushing Extender provides an insulated, fully shielded connection between an

[Contact Us](#)

## 600 A 35 kV class deadbreak apparatus bushing

General Eaton's Cooper Power™ series 600 A, 35 kV class deadbreak apparatus bushing meets the full requirements of IEEE® Std 386™-2006 for separable insulated connector systems. All 600 A



[Contact Us](#)



## (ANSI)15/25/35kV 200A INTEGRAL BUSHING WELL

Installation Dimensions And Drawing of Mounting Flange: Bushing Well Body Style Profile Diagram:

[Contact Us](#)

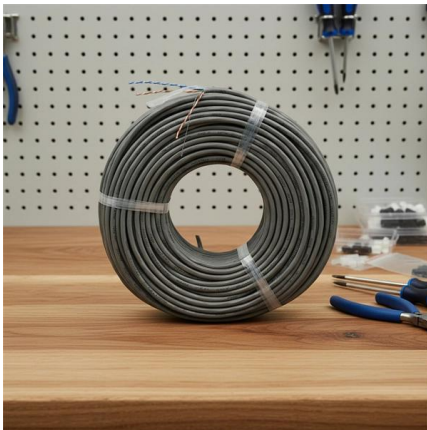


## 200 A 35 kV class three-phase integral loadbreak bushing

The bushing is designed for pad-mounted transformers, switchgear and other apparatus filled with transformer oil, Envirotemp™ FR3™ fluid or an approved equivalent. It eliminates the insert-to-well



[Contact Us](#)



## P635AB P935AB 35kV Apparatus Bushings

Richards 35 kV 600A (P635AB) and 900A (P935AB) Deadbreak Apparatus Bushings are Medium Voltage accessories utilized in equipment such as Transformers to provide a mating interface for

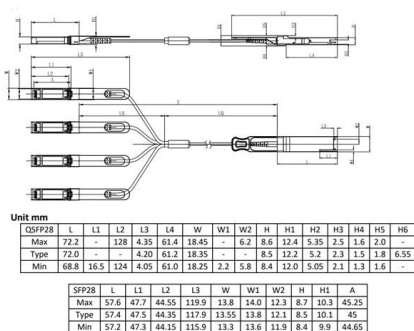
[Contact Us](#)

## Installation of hard busbars, wall bushings and post

Since the busbar is a conductor that collects and distributes current, it plays an important role in power transformation and distribution devices. The



[Contact Us](#)



## Understanding Busbars: Types, Applications, and

Discover everything about busbars in our comprehensive guide. Learn about the types, applications, and advantages of busbars in modern electrical

[Contact Us](#)



## 2CDC446001D0201

Busbar systems and installation accessories  
When connecting aluminum conductors, ensure that the contact surfaces of the conductors are cleaned, brushed and treated with grease.

[Contact Us](#)



## 200 A 35 kV class three-phase integral loadbreak bushing

General Eaton meets all the requirements of IEEE Std 386TM standard, Separable Insulated Connector Systems, and combines the advantages of a reliable one-piece design with the operating features

[Contact Us](#)

## Contact Us

---

For datasheets, pricing, or custom fiber access solutions, please visit:  
<https://www.frindel.es>