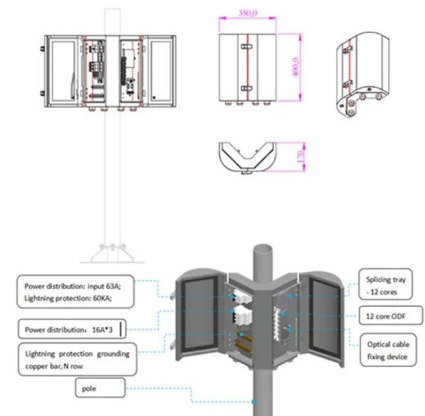


# **Red fire protection electrical distribution box markings**







### Electrical Panel Compliance Made Clear with Floor Marking

Learn about electrical panel clearance requirements, OSHA electrical panel requirements, and effective floor marking for hazard-free spaces with

[Contact Us](#)

### Electrical

Fire Alarm equipment per the Fire Alarm specification Cubicle/space labels for all MCCs, substations, and distribution switchboards Identify fuse type and size on the cover of fusible equipment. Special

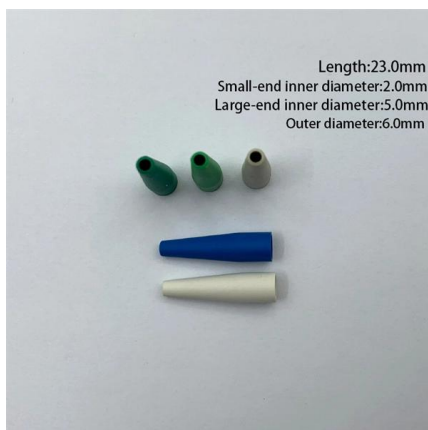
[Contact Us](#)



### 700.10 (A) Identification.

All boxes and enclosures (including transfer switches, generators, and power panels) for emergency circuits shall be permanently marked so they will be readily

[Contact Us](#)

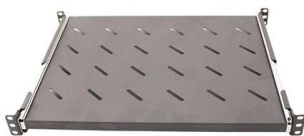
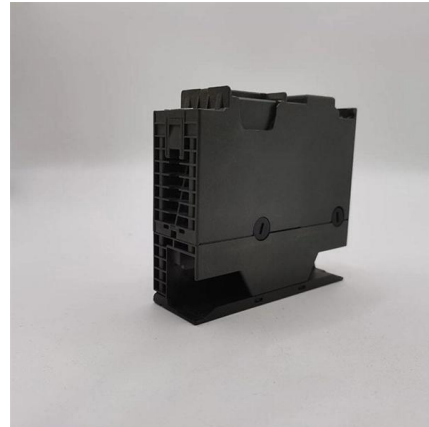




### Identifying Emergency Systems: Clear marking of

Marking equipment and wiring for emergency systems Now that a more thorough understanding of emergency systems has been established, the next Code rule

[Contact Us](#)



### Hazardous locations - CEC classifications

Hazardous locations - CEC classifications Class I -- 01 This diagram illustrates the escape paths of gases generated by an explosion within an electrical enclosure. When an explosion occurs, hot or

[Contact Us](#)

### SECTION 26 05 53

Use pressure-sensitive plastic labels at exposed locations and indelible marker (black or red) at concealed boxes. All fire alarm boxes shall have covers painted red.

[Contact Us](#)



### Standard for Fire Safety and Emergency Symbols

5.1.1\* This chapter presents standard referents and symbols that shall be used for visually alerting fire fighters and other emergency responders during fire and related emergencies.

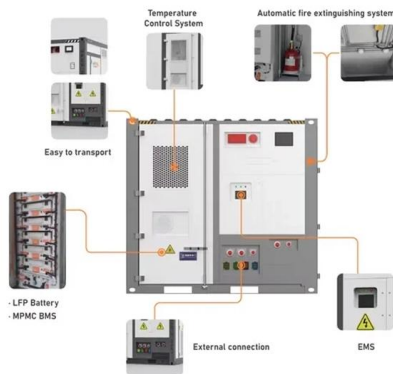
[Contact Us](#)



## IEC 60446 Explained: Wiring Colors & Terminal Identification Guide

Master IEC 60446 standards for electrical safety. Learn wiring color codes, terminal identification, and conductor labeling for compliant installations. Download free PDF guide.

[Contact Us](#)



## & Guidelines Facilities Standards

4.1.1 The following color coding shall be represented on all feeders, branch circuits, and distribution conductors and shall include the correct phase type and identification throughout the

[Contact Us](#)

## 9. Reading an Ex Label , Ex-pert Electrical Perspective

9. Reading an Ex Label One thing is sure that the Ex Labels or Markings are never written in GREEK and there is no 'fine print ' or any 'between the lines'

[Contact Us](#)



## Safety Signals

It offers detailed technical data and calculations for various fields such as fluid mechanics, material properties, HVAC systems, electrical engineering, and more.

[Contact Us](#)

## How to Read and Interpret Your



## Distribution Box Labels

Understand your distribution box labels to identify circuits, improve safety, and troubleshoot electrical issues in your home with confidence.

[Contact Us](#)



## SECTION 26 05 53

Use consistent letter/number conductor designations throughout on wire/cable marking tapes. Match identification markings with designations used in panel boards shop drawings, Contract Documents,

[Contact Us](#)



### LoRawan outdoor base station

- \* Industrial Internet gateway
- \* Compatible with LoRaWAN network,
- \* ClassA/B/C mode
- \* Support 8/16 channel
- \* Supports PoE power
- \* supply and backup battery power supply
- \* 10KV lightning protection



## Wiring Color Codes

Wire ID is essential for safety and efficiency, and adhering to wire color codes is an integral aspect. Learn about NEC wire color code standards, 3-Phase color codes.

[Contact Us](#)



## Electrical and Pipe Color Codes Guide , PDF , Green

There are 20 items listed with descriptions of the system or material and the designated color code for easy identification. The color codes include standards

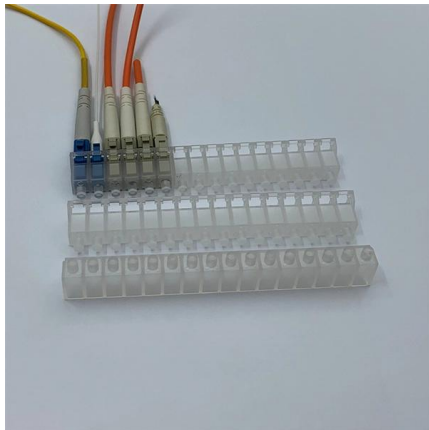
[Contact Us](#)



## Fire Rated & Resistant Electrical Enclosures & Junction

The Abtech range of fire rated electrical junction boxes are specified for use in building services and hazardous areas, where ATEX certified enclosures are

[Contact Us](#)



## Underground utility colour codes explained

Red - Electric power lines, conduit and cables.  
Orange - Telecommunication, alarm or signal lines.  
Yellow - Gas, oil, steam, petroleum, or

[Contact Us](#)

## Standard for Fire Safety and Emergency Symbols

5.1.1\* This chapter presents standard referents and symbols that shall be used for visually alerting fire fighters and other emergency responders during fire and related emergencies.

[Contact Us](#)



## IEC 60446 Explained: Wiring Colors & Terminal Identification Guide

Learn wiring color codes, terminal identification, and conductor labeling for compliant installations. Download free PDF guide.

[Contact Us](#)



### Is there anywhere in the code that requires a specific color for Fire

Hey all, Has anyone run into a problem using FPLP cable for a fire alarm system where the outer protective coating was not red? We have a contractor who is using yellow cable for a job

[Contact Us](#)



### TSA\_UM003 Electrical Distribution V2

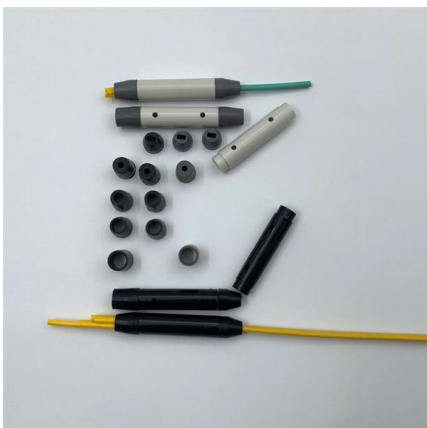
The area should have an appropriate protective electrical rubber mat on the floor and display a resuscitation chart. Appropriate fire-fighting equipment should be available in the immediate area.

[Contact Us](#)

### Understanding NEC 700.10: Wiring Requirements for Emergency

Permanent Marking: All boxes, enclosures, transfer switches, generators, and power panels used for emergency circuits must be clearly marked. Cable and Raceway Systems: If boxes

[Contact Us](#)



### Fire protection enclosures

Preventive fire protection is not only a matter for those constructing a building. In planning and designing their installations, expert electrical planners and engineers or switchgear manufacturers are

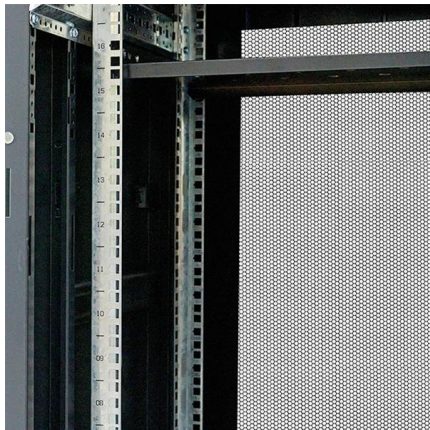
[Contact Us](#)



### Clause 6.7

The following equipment/fixtures/fittings for the fire protection systems shall be painted in red.  
For those equipment/ fixtures/ fittings not listed below, the colour scheme shall be in accordance

[Contact Us](#)



### Graphical Symbols and Abbreviations for Fire Protection Drawings

When marking up a drawing you can use symbols of your own choice, providing you create a legend showing what each symbol represents.

[Contact Us](#)

### ECU Fire Protection System for Distribution Boards

The ECU fire protection system was designed to meet new regulations, protecting domestic units and distribution boards from potential fire damage.

[Contact Us](#)



## Contact Us

---

For datasheets, pricing, or custom fiber access solutions, please visit:  
<https://www.frindel.es>