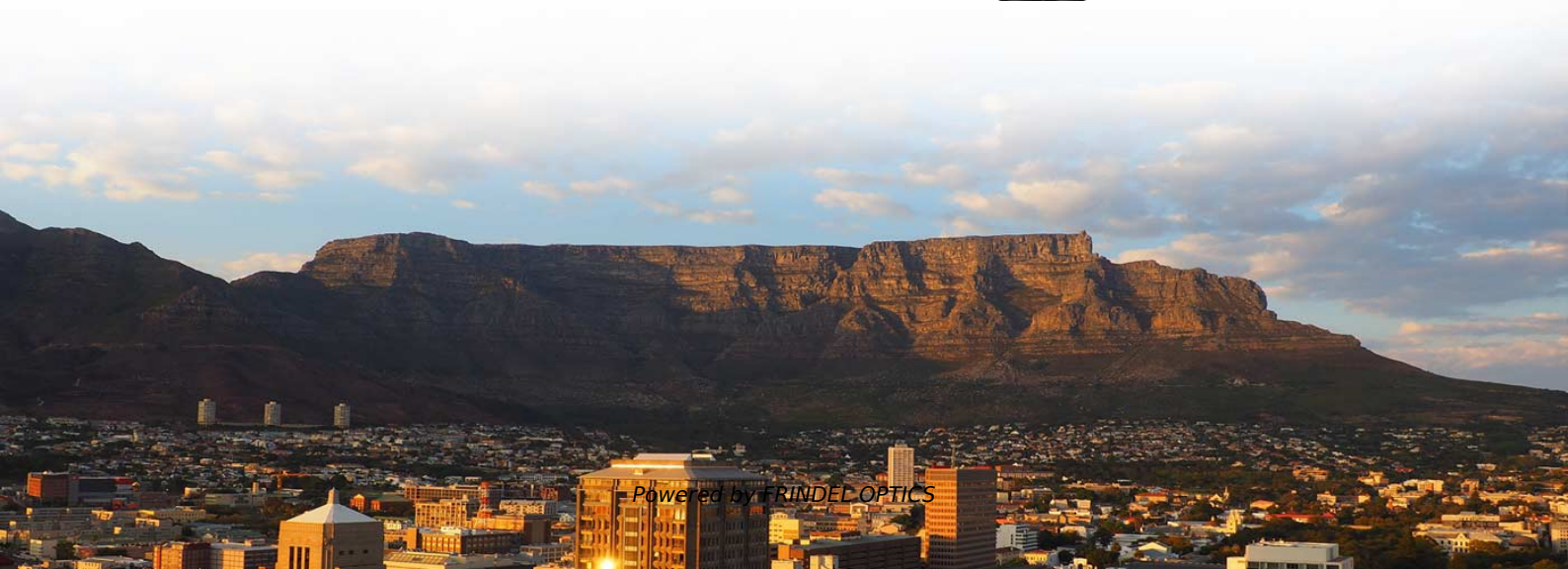


Red fire protection distribution box





Red fire protection distribution box

Fire Safety Accessories



Purchase fire blankets, stands, trolleys, manual alarms, emergency release devices and more online today via Red Box Fire Control. Your trusted provider for fire safety equipment in the UK.

[Contact Us](#)

FireBox

There can be no compromises in fire protection. In an emergency, every product used must function absolute-ly reliably and also comply with legal and construction regulations.

[Contact Us](#)



Daken Adamant Fire Extinguisher Cabinet - Red -

Find Daken Adamant fire extinguisher cabinets at Transquip. Built to hold 6 kg extinguishers, designed for dependable, robust use in industrial environments.

[Contact Us](#)

About Us , Red Box Fire Control

About Red Box Fire Control We are proud of our excellent customer relations. The team at Red Box Fire Control have enjoyed helping our customers to meet their Fire Safety obligations since 1987. Our



A4-DOC-BOX-R-FIRE ELMDENE, A4 Fire Document

Buy A4-DOC-BOX-R-FIRE - ELMDENE - A4 Fire Document Box Red. Farnell® UK offers fast quotes, same day dispatch, fast delivery, wide inventory, datasheets &

[Contact Us](#)



Fire Department Box with Combination Lock and

HEAVY-DUTY: Fire Department Box is made of heavy-duty steel with a red coating to increase visibility and ensure quick location in the event of an emergency

[Contact Us](#)



Guide for Protection of Recessed Boxes in Fire-Rated Walls

There are product Certifications for the protection of large steel boxes recessed in fire-rated walls, such as used for circuit breaker panels. Those are not found in listing category CLIV.

[Contact Us](#)



Fire Department Box With Lock Hole Red



Heavy Duty Steel

Fire Department Box is made of heavy-duty steel with a red coating to increase visibility and ensure quick location in the event of an emergency. The "FIRE

[Contact Us](#)



Fire Extinguishers

At Red Box Fire Control, we are proud to offer a high-quality range of fire extinguishers designed to meet the strictest safety standards. With over 39 years

[Contact Us](#)



Fire Protection Centre

Fire Protection Centre supplies a complete range of Reliable Pressure Gauges, Pressure Switches, Flow Switches and Flow Meters--critical components for monitoring and maintaining fire sprinkler

[Contact Us](#)



Elmdene Fire Document Box

The Elmdene A4-DOC-BOX-R-FIRE is a red fire document box ideal for locating near to the fire alarm control panel. It is accessed using a key, which helps prevent un

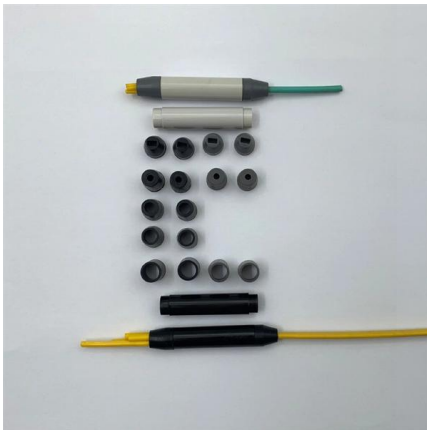
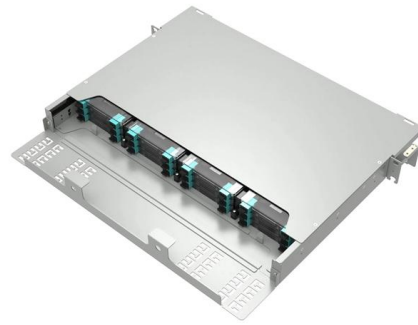
[Contact Us](#)



ECU Fire Protection System for Distribution Boards

The ECU fire protection system was designed to meet new regulations, protecting domestic units and distribution boards from potential fire damage.

[Contact Us](#)



10g aerosol distribution box fire extinguisher

The 10-gram guide rail distribution box fire extinguisher is a best-selling product in the power transmission and distribution sector.

[Contact Us](#)

Daken Regon Fire Extinguisher Box, 9kg - Red/Black -

The Daken Regon Fire Extinguisher Box is a durable and secure solution for protecting fire extinguishers on trucks, trailers, vans, agricultural vehicles, and

[Contact Us](#)



Vimpex 10-2410RSX-S Identifire Fire Alarm Connection

The Vimpex 10-2410RSX-S is a red fire alarm connection box supplied with a surface mounting backbox, from the Identifire range of products. This connection box

[Contact Us](#)





Red fire alarm j-boxes? , Information by Electrical Professionals for

I'm trying to find the specific code that requires fire alarm j-boxes to be red in color. I could not find anything in the NFPA 72 that spelled it out directly. The NEC article 760.10 states:

[Contact Us](#)



EDWARDS SIGNALING, Red, Surface, Box

These housings and enclosures install into walls, ducts, or other building surfaces to hold a fire alarm component and protect it from moisture, dust, and other

[Contact Us](#)

Fire Rated & Resistant Electrical Enclosures & Junction

Fire Rated & Resistant Electrical Enclosures & Junction Boxes Fire Resistant Enclosures Junction Boxes Fire resistant enclosures and junction boxes are used

[Contact Us](#)



ECU Fire Protection System for Distribution Boards

To protect against overheated ECUs, we've manufactured an ECU fire protection system consisting of an ECU cover housed with intumescent lining. The flexible

[Contact Us](#)





PIP-3AN/Distribution fire protection installation box

The PIP-3AN/Distribution box is made of sheet metal covered with red powder paint. The side walls of the base have graduated chokes inserted from the top and

[Contact Us](#)



ELMDENE FIRE DOCUMENT BOX

The Elmdene A4-DOC-BOX-R-FIRE is a red fire document box ideal for locating near to the fire alarm control panel. It is accessed using a key, which helps prevent un

[Contact Us](#)

Explosion Proof Illumination Distribution Boxes (With

Flameproof and explosion proof, these power overhaul distribution boxes are suitable for use in hazardous areas. Specs: Ex mark: Ex de IIC T4 Gb DIP A21 TA,T4

[Contact Us](#)



Red 4 in. Drawn Square Fire Alarm Boxes, 1-1/2 in. Deep

Shop Red 4 In. Drawn Square Fire Alarm Boxes, 1-1/2 In. Deep By Crouse Hinds (Eaton) (TP414RED) At Graybar, Your Trusted Resource For Square Boxes And Other Crouse Hinds (Eaton) Products.

[Contact Us](#)

Fire Detection Solutions and Fire Alarm Systems , Simplex



As one of the most trusted brands in the fire protection industry, customers around the globe rely on SIMPLEX life safety systems to help protect their people and properties.

[Contact Us](#)



Fire protection junction M-BOX

The fire protection junction M-BOX is designed for connecting and/or branching cables of installations which guarantee continuous operation during fire conditions.

[Contact Us](#)



(6 Pack) 5Lb RED Heavy Duty Plastic Fire Extinguisher Boxes

This Red Color 5 Lb Outside Heavy Duty Fire Extinguisher Box Keeps 5 Lb Fire Extinguishers Out Of The Elements Or From People Walking Off With The Fire Extinguisher. These 5 Lb Plastic Fire

[Contact Us](#)



Fire Equipment Storage Box > Outdoor Safety Storage

For storing your vital fire safety equipment when outside, our fire equipment storage box is a top choice. Built with a reinforced structure and smooth, ergonomic nylon

[Contact Us](#)





Vimpex 10-2410RSX-S Identifire Surface Alarm System

The 10-2410RSX-S is a red fire alarm connection box supplied with a surface mounting backbox, from the Identifire range of products. This connection box

[Contact Us](#)



Contact Us

For datasheets, pricing, or custom fiber access solutions, please visit:
<https://www.frindel.es>