

Power supply radius of PoE switch





Overview

Standards-based Power over Ethernet is implemented following the specifications in IEEE 802.3. In multi-pair cases, PoE supplies power as a over two or more of the The original PoE standard, also known as IEEE 802.3. Power and data can be delivered simultaneously over Ethernet connections, thanks to a ground-breaking technology called Power over Ethernet (PoE). PoE is an emerging new capability to deliver data and power to internet appliances over existing CAT-5 Ethernet. In this configuration, an Ethernet connection includes Power over Ethernet (PoE) (gray cable looping below), and a PoE splitter provides a separate data cable (gray, looping above) and power cable (black, also looping above) for a wireless access point. For this there are two methods: either by a HW protocol (Physical Layer Classification) or by using the LLDP protocol (Link Layer Discovery Protocol) for data exchange between.



Power supply radius of PoE switch



TP-LINK OMADA SG2016P

JetStream 16-Port Gigabit Smart Switch with 8-Port PoE+ 120 W PoE Budget: 8x 802.3at/af-compliant PoE+ ports with a total power supply of 120 W*. Full Gigabit Ports: 8x gigabit PoE+ ports and 8x

[Contact Us](#)

Bring your PoE power supply designs to the next level

Infineon has long-standing expertise in power supplies and offers a highly reliable and efficient MOSFET and control IC portfolio for the power supply in your PoE designs.

[Contact Us](#)



Power Supply Standards for POE Switches. Why is the

3 power supply standards for POE switches With the development of intelligent security, monitoring has changed from visible to understandable, and

[Contact Us](#)

Solid Signal

Solid Signal, connecting you to your signal solutions. Looking to upgrade your home entertainment system? Solid Signal has everything you need to get the job done!

[Contact Us](#)



Power over Ethernet

Overview
Standard implementation
Techniques
Standards development
Uses
Terminology
Power management features and integration
Non-standard implementations

Standards-based Power over Ethernet is implemented following the specifications in IEEE 802.3af-2003 (which was later incorporated as Clause 33 into IEEE 802.3-2005) or the 2009 update, IEEE 802.3at. The standards require Category 5 cable or better for high power levels but allow using Category 3 cable if less power is required. In multi-pair cases, PoE supplies power as a common-mode signal over two or more of the differential pairs

[Contact Us](#)



Power over Ethernet (PoE) Explained: PoE Standards

Explore different PoE standards and wattage levels to power devices efficiently. Unlock smarter networking with the right PoE switch today!

[Contact Us](#)

Power over Ethernet

In multi-pair cases, PoE supplies power as a common-mode signal over two or more of the



differential pairs in Ethernet cables. This power comes from a PoE

[Contact Us](#)



What is Power Over Ethernet (POE)?

A Power over Ethernet switch (POE switch) is a network switch with built-in Power over Ethernet injection. Simply attach other network devices to the

[Contact Us](#)



Bring your PoE power supply designs to the next level

In September 2018, a new standard for Power over Ethernet, IEEE 802.3bt, was introduced. The standard changed the requirements for the power supply design of PoE devices.

[Contact Us](#)

Selecting the Right PoE Switch and how to use PoE

With a multitude of PoE switches available on the market, choosing the right one can be difficult. The original PoE standard was called IEEE 802.3af, and allowed for

[Contact Us](#)





Power over Ethernet

Since the internal surge protection is designed for high-voltage, low-energy surge events, it cannot handle the massive amount of power delivered by the passive PoE injector, which can lead to a

[Contact Us](#)



Low Cost Isolated Power Supply for PoE Applications

This document describes an easy-to-use, low-cost isolated power supply to be used in Power-over-Ethernet (PoE) powered devices (PD's) that is based on TI's TPS2370 PoE interface switch.

[Contact Us](#)



Understanding PoE Switch Power Supply Limits: Why Is

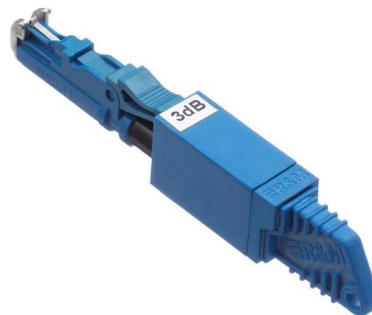
Understanding PoE Switch Power Supply Limits: Why Is the Maximum Distance 100 Meters? 1. Introduction Power over Ethernet (PoE) technology allows network

[Contact Us](#)

What is a PoE Switch

A Power over Ethernet switch is a network switch that has PoE functionality integrated. Learn about different variations, limitations and benefits of

[Contact Us](#)

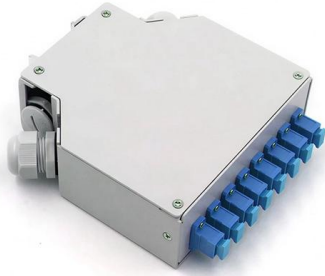




How Do PoE Switches Supply Power for PoE Powered Devices?

This article aims to explain the operational principles and modes of the PoE switch 's power supply, as well as the limited distance and maximum voltages associated with PoE switch

[Contact Us](#)



Understanding Power over Ethernet (PoE) Wattage and

Explore PoE wattage, IEEE standards, and power sourcing tips. Learn how to select the right PoE setup for reliable, future-ready network performance.

[Contact Us](#)



IEEE802.3at Power over Ethernet Plus (PoE+) Standard

The use of PoE for these applications avoids the need for traditional power adapters. The rapid growth of PoE quickly led to a desire to provide power supplies for higher powered terminal devices

[Contact Us](#)

HPE Aruba CX 6000 12-Port PoE (139W) 2x1G/SFP Switch , R8N89B

The HPE Aruba R8N89B is an entry level Layer 2 access switch with 12 x 1G PoE ports (139W), 2 x 1G ports, 2 x 1G SFP ports and a single fixed power supply.

[Contact Us](#)





What is PoE and PoE Switch? Working principle, power

These standard protocols specify key parameters such as the power transmission mode, power transmission power, and power transmission distance between PSE

[Contact Us](#)

FS Community

Hier sollte eine Beschreibung angezeigt werden, diese Seite lässt dies jedoch nicht zu.

[Contact Us](#)



Power over Ethernet (PoE) Installation Best Practices

Power over Ethernet (PoE) Installation Best Practices Written by Don Schultz, trueCABLE Technical Manager, Fluke Networks Copper/Fiber CCTT,

[Contact Us](#)



PoE Availability and Modes

PoE Availability and Power Requirements PoE Availability is a switch's total power, in Watts, that it can distribute among all connected clients. Your PoE Availability

[Contact Us](#)





HPE Aruba CX 6200M 24-Port 1G PoE & 4SFP+ Switch , R8Q68A

The HPE Aruba R8Q68A is a Layer 3 stackable switch with 24 x 1G PoE ports (740W), 4 x 1/10G SFP+ ports and dual modular power supplies.

[Contact Us](#)

Power Supply Standards for POE Switches. Why is the Power Supply

The power supply distance, in addition to the quality of the PoE switch itself, has the greatest relationship with the quality of the network cable. Some use some cheap, poor quality network

[Contact Us](#)



Industrial 10-Port GbE PoE+ Switch w/ 8 GbE Ports & 2

Industrial 10-Port Gigabit PoE+ Switch with 8 Gigabit Ethernet Ports and 2 SFP Uplinks 240 W PoE Power Budget, IEEE 802.3at/af (PoE+/PoE) Compliant, IP30

[Contact Us](#)



Multybyte AI PoE Switch 16FE+2GE+1SFP 400W , 250M Extend Ethernet Switch

Product Description The Multybyte AI PoE Switch (16FE + 2GE + 1SFP) is a high-performance unmanaged Power over Ethernet switch designed for reliable networking and surveillance

[Contact Us](#)



Power Over Ethernet: What Is "PoE"? --



Everything You

Power Over Ethernet (or "PoE") is a technology that delivers power and data over a single Ethernet cable to power devices like IP cameras and VOIP phones.

[Contact Us](#)

HPE Aruba CX 6200M 48-Port 1G PoE & 4SFP+ Switch , R8Q70A

The HPE Aruba R8Q70A is a Layer 3 stackable switch with 48 x 1G PoE ports (1440W), 4 1/10G SFP+ ports and dual modular power supplies.

[Contact Us](#)



2024 PoE Switch Quick Reference Guide

These switches can connect and power PoE devices up to 250m away, while DPE-302GE, in a daisy chain configuration of up to 5 units, can connect devices up to an incredible 500m distance.

[Contact Us](#)

Contact Us

For datasheets, pricing, or custom fiber access solutions, please visit:
<https://www.frindel.es>