

Place the electrical distribution box next to the stairs



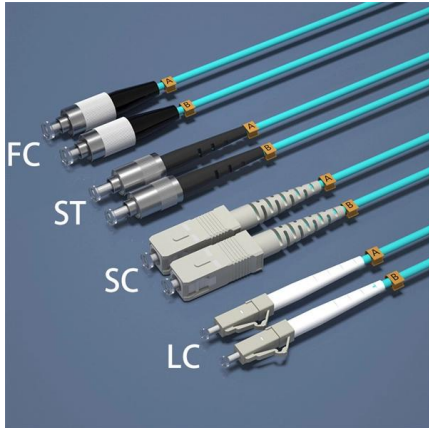


Overview

In summary, electrical panels can be located anywhere other than in bathrooms, clothes closets, above steps of a stairway or in fire-rated partitions or area separation walls as long as the proper working clearances are provided per NEC 110. While not specifically excluded by the National Electrical Code (NEC), there are two code standards that a panel must comply with to be located under a stair: 1) The under-stair space is usually a closet, and a panel cannot be located in a closet near ignitable material [NEC 240. Electrical panels need to be installed 4' off the ground with the center grip handle of the highest circuit breaker is no more than 6'7" high to be NEC compliant. The clearance around the electric panel must be at least 30 inches wide with 3' of front workspace clearance.



Place the electrical distribution box next to the stairs



Electrical Panel Mounting Requirements (Dictated by the

Looking to transfer your electrical panel to a new place? Perhaps you want to put it somewhere inconspicuous - in a closet or in the bathroom.

[Contact Us](#)

Best Location for Circuit Panel

What's the Best Location for a Circuit Panel? Are you building a new home, outbuilding or addition? If you're planning to run electricity there, you need a wiring plan. You also need to know where to put

[Contact Us](#)



Nagaland News, India News, Northeast News

The Morung Express brings the Latest News, Top Breaking headlines on Politics and Current Affairs in Nagaland India and around the World, Naglaand News, Naga

[Contact Us](#)

An Ultimate Guide to Choose the Electrical Panel Location

Although not as common, some homes have sufficient space under the stairs to accommodate an electrical panel. However, if the area is too cramped,



Location of distribution board

The electrician put it next to the floor in a first floor bedroom! My worst was replacing a consumer unit mounted under the stairs. I had to lie on my back

[Contact Us](#)



Location of distribution board

Interestingly, the Irish Regs require the board to be not more than 2.15m from the floor to the highest protective device. The intention is to limit

[Contact Us](#)



Electrical panels in rated stairwell

I have a renovation on an existing 3 story, type 3B construction, R-2 six unit apartment building. The owner wants to put electrical panels in the rated stairwell. Can not find anything in NEC

[Contact Us](#)





The installation requirements for the distribution box

A distribution box is the heart of any electrical system. It takes the incoming power and safely distributes it to different circuits throughout your

[Contact Us](#)



Electrical Panel Locations

NEC 110.26 requires electrical equipment (including electrical panels) to be located to provide required working clearances about the equipment.

[Contact Us](#)

Panelboard on Stairs, Wireway Clearance and More

Jim Dollard has an extensive background in codes and standards. Send questions about the National Electrical Code (NEC) to Jim at

[Contact Us](#)



What Is the Best Position for a Circuit Breaker Box

The best position of the circuit breaker box is in a dry, accessible area with 3 feet clearance, 4-6'7" height, and full code compliance for safety.

[Contact Us](#)

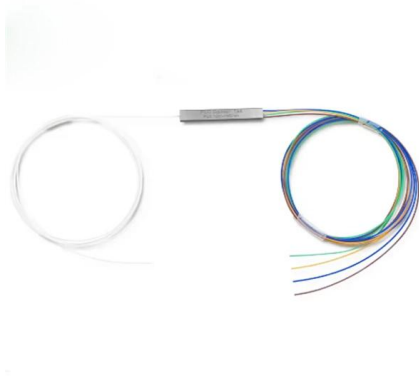
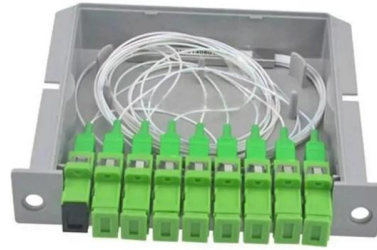




Electrical Panel Clearance Distance FAQs

Electrical panel clearance distance questions & answers. This electrical wiring article series discusses safe an InspectAPedia tolerates no conflicts of interest. We have no relationship with advertisers,

[Contact Us](#)



Where Is the Distribution Box Located and How to Find It

Learn where distribution boxes are typically located in homes and get step-by-step instructions for finding your electrical panel. Includes safety tips and

[Contact Us](#)

Electrical Panel Location and Installation: Clearance,

Are Electrical Panels Allowed Over Stairs? When looking at the stairs, we occasionally see electric panels in stairways of a basement or where a

[Contact Us](#)



Can an electrical panel be located under stairs?

There is rarely that much clear floor area in an under-stair closet for a panel, or that much headroom. And an appliance in the closet, such as a water heater, cannot infringe on the required area.

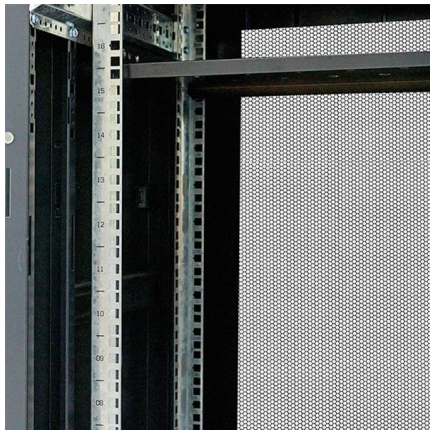
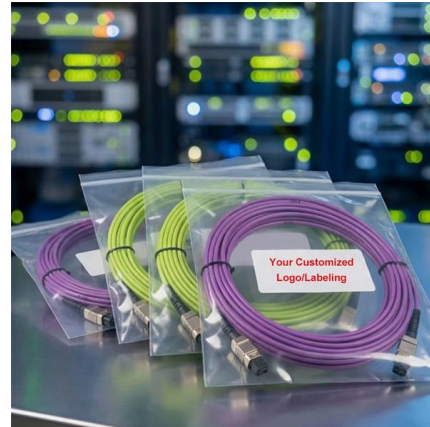
[Contact Us](#)



Electrical Panel Mounting Requirements (Dictated by the

While the National Electrical Code prohibits the placing of an electrical panel in tight spaces, it does not outlaw its installation under stairways - as long

[Contact Us](#)



Panels Under Stairs , Information by Electrical Professionals for

I believe I am safe, but I am still questioning this. The building is not providing me the room required to mount the equipment in a room. I have two panels located under a staircase. Does

[Contact Us](#)

Panels Under Stairs , Information by Electrical Professionals for

Do these panelboards only serve stair related loads? There are a couple of requirements from NFPA 101 and the 2020 NEC that prohibit installing conduit or wiring not required for the stairs

[Contact Us](#)



EPM PM8-Standard Electrical Specification May16

3.10.6 Where Tap-In boxes supply local distribution equipment adjacent to the busbar the connection shall be completed by flexible conduit and tri-rated cables.

[Contact Us](#)





How to Install a Cable Distribution Box Safely and

In modern electrical systems, cable distribution boxes (also known as electrical distribution boxes or distribution boxes) play a crucial role as the key

[Contact Us](#)



Are There Restrictions On Where To Mount A

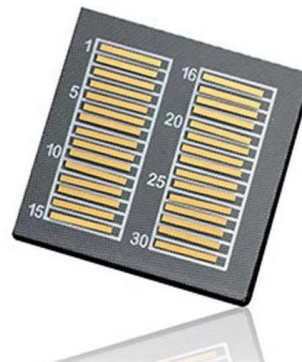
The rules and restrictions on the placement of circuit breaker boxes are meant to make the installation safe, and that includes common-sense

[Contact Us](#)

Electrical Panel Locations

Learn more about Electrical Panel Locations- A Guide for Placement - MEP Engineering - Master Electrician Services EVstudio .

[Contact Us](#)



Panel boards allowed under stairs? : r/electricians

I'm having an argument with an inspector about installing panel boards in a space beneath stairs in a commercial building. All working space clearances are met, access requirements are met, the space

[Contact Us](#)

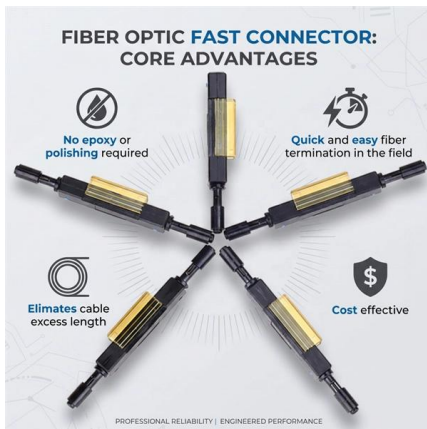


The position of your Electric Distribution Board (i.e. fusebox/consumer



ELECTRIC DISTRIBUTION BOARD AND METER POSITION The position of your Electric Distribution Board (i.e. fusebox/consumer unit) and meter is inside the cupboard beneath the stairs.

[Contact Us](#)



Safety requirements of distribution box

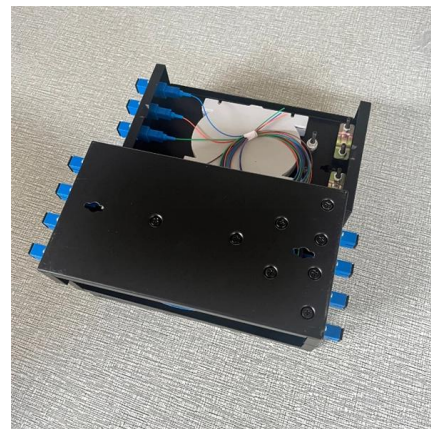
The distribution box has the characteristics of small size, simple installation, special technical performance, fixed location, unique configuration function, not limited by

[Contact Us](#)

The installation requirements for the distribution box

Learn how to install a distribution box safely and correctly. Covers wiring, placement, standards, and expert tips for a compliant setup.

[Contact Us](#)



Contact Us

For datasheets, pricing, or custom fiber access solutions, please visit:
<https://www.frindel.es>