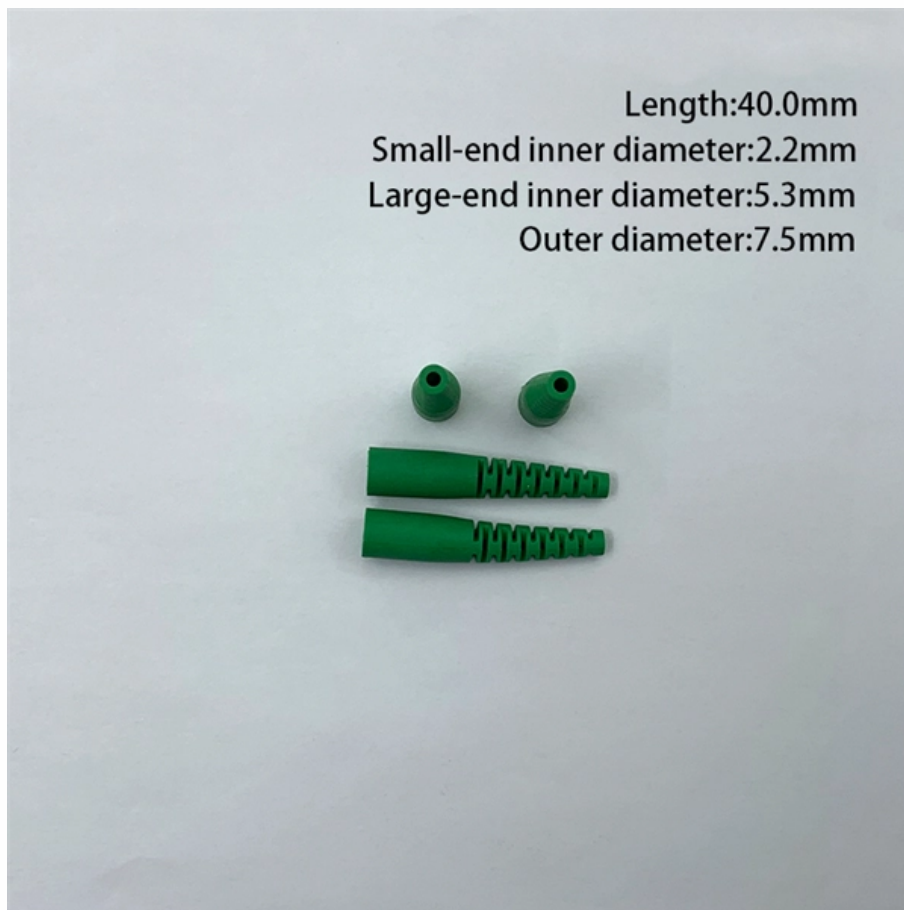


# **Place electrical distribution box under the stairs**





## Overview

---

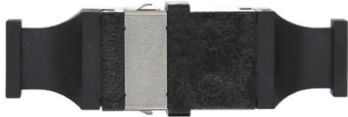
While the National Electrical Code prohibits the placing of an electrical panel in tight spaces, it does not outlaw its installation under stairways - as long as the area is spacious enough. There are a couple of requirements from NFPA 101 and the 2020 NEC that prohibit installing conduit or wiring not required for the stairs in the exit enclosure. It takes the incoming power and safely distributes it to different circuits throughout your building.



## Place electrical distribution box under the stairs

---

### Electrical Panel Mounting Requirements (Dictated by the



While the National Electrical Code prohibits the placing of an electrical panel in tight spaces, it does not outlaw its installation under stairways - as long

[Contact Us](#)

### Where is the best place to put a power distribution box?

Capacity Another key consideration when choosing the location for a power distribution box is capacity. The box should be located in an area where it can accommodate the necessary wiring and circuit



[Contact Us](#)



### Panelboard on Stairs, Wireway Clearance and More

Section 240.24 (F) prohibits overcurrent protective devices from

[Contact Us](#)

### Getting ring main ends to CU under the stairs

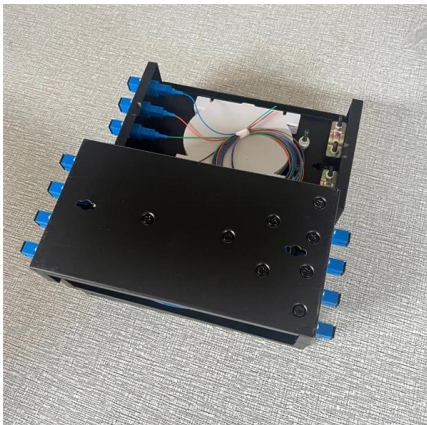
So my question is, what's the best route to get the tails back down to the CU? I know I can't go directly through the stairs as that's part of the safe zone. So do I go under the bath in the



**Consumer unit in bathroom or toilet.  
Electrical regs?**

Whilst it is common to find the consumer unit in all sorts of places in the home it does not necessarily mean that the installation location is safe, compliant with

[Contact Us](#)



**Nagaland News, India News, Northeast News**

The Morung Express brings the Latest News, Top Breaking headlines on Politics and Current Affairs in Nagaland India and around the World, Naglaand News, Naga

[Contact Us](#)



**Panels Under Stairs , Information by  
Electrical Professionals for**

Do these panelboards only serve stair related loads? There are a couple of requirements from NFPA 101 and the 2020 NEC that prohibit installing conduit or wiring not required for the stairs

[Contact Us](#)



**How To Choose Your Electrical Panel**



## Location , Penna

One thing to consider though, is emergency lighting, as in case of a power outage, you'd need to easily find your way to the main breaker box. Under

[Contact Us](#)

### LoRawan outdoor base station

- \* Industrial Internet gateway
- \* Compatible with LoRaWAN network,
- \* ClassA/B/C mode
- \* Support 8/16 channel
- \* Supports PoE power
- \* supply and backup battery power supply
- \* 10KV lightning protection



## The Importance of Distribution Boxes in Electrical Systems

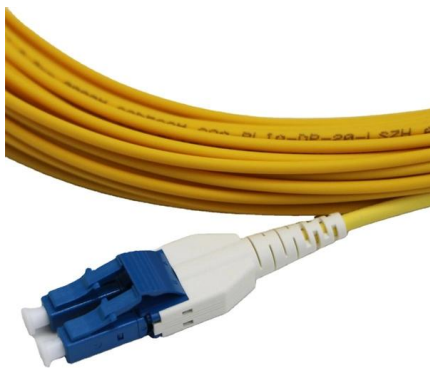
A distribution box is an exposed or concealed metal box that houses the circuit breakers that regulate the distribution of electricity throughout a

[Contact Us](#)

## Electrical Panel Location and Installation: Clearance,

Ideally, you should install a breaker box in an unfinished basement or garage, but you can place them inside any room that meets the NEC

[Contact Us](#)



## Best Location for Circuit Panel

The best place to put your panel is where it's easily accessible, unobstructed and unlikely to get wet. To be on the safe side, hire a SESCO electrician to suggest a good spot and install it safely for you.

[Contact Us](#)



### Can an electrical panel be located under stairs?

While not specifically excluded by the National Electrical Code (NEC), there are two code standards that a panel must comply with to be located under a stair: 1) The under-stair space is usually a closet, and

[Contact Us](#)



### Under stairs storage but with access to meters and fuse

A while back the electrical regulations were tightened such that consumer units under stairs that would be an escape route if there was a fire now

[Contact Us](#)



### Moving consumer unit from kitchen to under stairs

Electrical Moving consumer unit from kitchen to under stairs Anonymous user 03/03/2024 - 3.09 PM Hello I am having a new kitchen installed and the electric meter and consumer unit are

[Contact Us](#)



### How to Choose the Right Location for Your Electrical

Electrical panels can be placed under staircases, although this is a less popular choice. If you have sufficient space under the staircases, you can

[Contact Us](#)



### **Moving meters for loo under stairs?**

I want to put a loo in under our stairs, and have a builder all lined up. However, our electric and gas meters are in that cupboard. My builder has told me I need to get them moved, and

[Contact Us](#)



### **The installation requirements for the distribution box**

A distribution box is the heart of any electrical system. It takes the incoming power and safely distributes it to different circuits throughout your

[Contact Us](#)

### **How to confirm whether the installation location of the**

The electrical distribution box plays a vital role in the power system. It is responsible for distributing electricity to various circuits and equipment.

[Contact Us](#)



### **Panel on stairway landing , Information by Electrical Professionals for**

The NEC does not allow an electrical panel on a stairway, but what about a stairway landing, if the clearance requirements are meet? Again code references would be appreciated! Thanks,

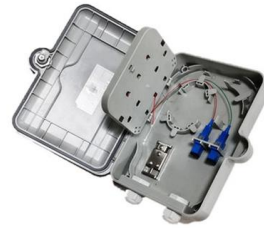
[Contact Us](#)



## The installation requirements for the distribution box

Learn how to install a distribution box safely and correctly. Covers wiring, placement, standards, and expert tips for a compliant setup.

[Contact Us](#)



## Where is the best place to put a Electrical distribution box?

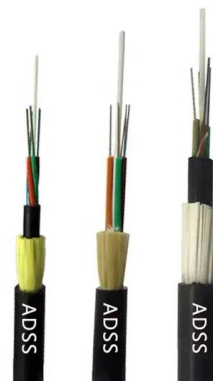
Additionally, if the box is located in an area with high humidity or moisture, it is important to take steps to mitigate these effects - consider using cooling fans and dehumidifiers to ensure your

[Contact Us](#)

## Best Location for Circuit Panel

Stairways: If it's under the stairway, your panel will be easy to reach and well protected from your home's foot traffic. Don't do this if the area under the stairs is cramped. Here are some additional tips

[Contact Us](#)



## Where Can I Put My Electrical Meter Box

Learn where to install your electrical meter box for safety, easy access, and regulation compliance with expert tips and maintenance advice.

[Contact Us](#)

## How to Install a Cable Distribution Box Safely and



In modern electrical systems, cable distribution boxes (also known as electrical distribution boxes or distribution boxes) play a crucial role as the key

[Contact Us](#)



8-Port PLC Fiber Splitter Box

12-Port SC Fiber Splitter Box

Size: 235\*215\*75mm  
Material: ABS, IP65,



## Panel boards allowed under stairs? : r/electricians

I'm having an argument with an inspector about installing panel boards in a space beneath stairs in a commercial building. All working space clearances are met, access requirements are met, the space

[Contact Us](#)

## Can an electrical panel be located at a stair landing?

For more on this requirement and its history, go to When did the requirement for clearance in front of an electrical panel become code? Also, see our articles Can an electrical panel

[Contact Us](#)



## Contact Us

---

For datasheets, pricing, or custom fiber access solutions, please visit:  
<https://www.frindel.es>