

# Optical Module Rssislope





## Overview

---

Many optical modules use avalanche photodiode-based (APD) optical receivers for high-sensitivity applications. In such modules, receive signal strength indicator (RSSI) is based on the optical photocurrent, rather than electrical signal amplitude at the output of the. Whether you are creating a 100-Gbps or 400-Gbps, small form-factor pluggable (SFP) module, SFP+ transceiver, XFP module, CFP, X2/XENPAK module. In RX mode, the RSSI value can be read continuously from the RSSI status register until the. This document focuses on projection optical modules that incorporate Texas Instruments' DLP Display chips and are designed to project an image onto a surface for a variety of applications, including smartphones, tablets, display projectors, smart home displays, digital signage, AR glasses, and. MPS provides compact and comprehensive solutions that feature high efficiency and low ripple characteristics to meet the design requirements of high-speed optical module power supply solutions. These products include buck and buck-boost conversion power modules (integrated inductors), negative.



## Optical Module Rssislope

---



### Optical module

The main trade show for the large optical module industry is the Optical Fiber Conference (OFC), that is held annually in southern California. Other prominent shows for the industry include ECOC in Europe

[Contact Us](#)

### Optical module

Optical modules can either plug into a front panel socket or an on-board socket. Sometimes the optical module is replaced by an electrical interface module that implements either an active or passive

[Contact Us](#)



### Reference Guide to Fiber Optic Testing

Optical fiber is reliable, is very flexible, and is not sensitive to vibrations. Optical fiber is guaranteed for 25 years (compared to a guarantee of 10 years for satellite communications systems). Operating

[Contact Us](#)

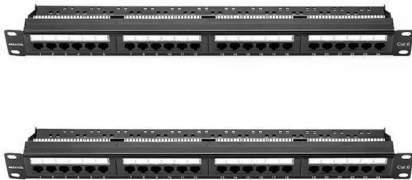
### GPON OLT C++ Optical Module Spec Sheet

1310nm burst-mode receiver with APD-TIA 2-wire interface for integrated digital diagnostic Monitoring Receiver RESET, Signal Detect, RSSI function indication (RESET, RX\_SD, RSSI) SFP package with

Integrated Aluminum Alloy  
Die Casting



Durable and Secure Metal Screws



### Signal strength and the RSSI pin

The XBee Grove Development Board includes an LED connected to the XBee module's pin 6. When this pin is configured as the RSSI pin, the LED

[Contact Us](#)

### Understanding Optical Modules: Working Principles,

Explore the working principles, structures, and performance metrics of optical modules, essential components of optical fiber communication systems. Learn

[Contact Us](#)



### OPGP-43-B3B1RS\_S2

The module consists of 1490nm un-cooled DFB laser, InGaAs/InP APD, preamplifier and WDM filter in a high-integrated bi-directional optical sub-assembly, and it receives up to 1.244Gbps of burst-mode

[Contact Us](#)





## **RSSI: Received Signal Strength Indication Explained**

Learn about RSSI (Received Signal Strength Indication) and its calculation in WLAN and WiMAX OFDM-based systems. Understand its measurement and use in

[Contact Us](#)



## **Comprehensive Analysis of Optical Module: Detailed Explanation of**

Optical module is a key optical fibre communication device, its main function is to convert electrical signals into optical signals and transmit data through optical fibre media.

[Contact Us](#)

## **Optical module based on RSSI function**

Traditional optical module only has photoelectric converting function and received signal measuring ability usually, estimates the distance that module probably can be transmitted according to the

[Contact Us](#)



## **The need for current sensing in optical modules for 100G and beyond**

In this post, I'll discuss various current-sensing functions in high-bandwidth data communication applications for pluggable optical modules.

[Contact Us](#)



For our optical component and module customers, this highly differentiated set of products provides a unique roadmap that improves performance and reliability, while simplifying design, lowering costs

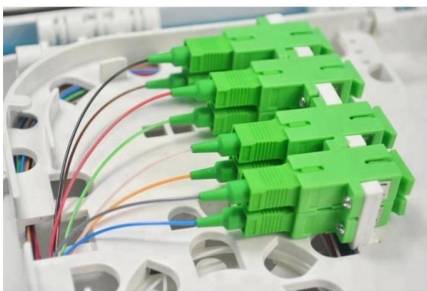
[Contact Us](#)



### **DN505 -**

The AGC module is basically part of a control loop, which aims to keep the in-band signal level in the demodulator constant, regardless of the signal level at the antenna.

[Contact Us](#)



### **Fault Analysis and Handling of Optical Modules**

The daily use of optical modules may encounter various problems, and I do not know how to solve them. The following will introduce the causes of various problems and how to deal with them.

[Contact Us](#)



### **DigChip IC database**

Abstract: This application note explains how to use the DS1864 SFP laser and diagnostic IC to perform enhanced receive signal strength indicator (RSSI) calibration for optical receivers that use an

[Contact Us](#)



## GPON OLT B+ Optical Module

GPON OLT B+ Optical Module-OP-MGPL6443S1/2  
SD-20B+ 19 TD- LVPECL-I Transmitter Inverted  
Data Input 20 VeeT Module Transmitter Ground  
Recommended Interface Circuit Host Board

[Contact Us](#)



## Designing a Module for High-Speed Optical

This article explores MPS optical module solutions to meet the design requirements of high-speed optical communication as well as different laser diode applications.

[Contact Us](#)

## 50217\_OptHighSpdBulltn.v3 dd

DIGITAL CROSSPOINT Analog Devices' optical and high speed networking ICs solve a depth and breadth of challenges faced by today's designers of datacom and telecom systems, optical modules,

[Contact Us](#)



## DN505 -

When using data rates other than the ones in Table 1 it is possible to find the RSSI offset by applying a known input power and then read out the RSSI value. The following sections provide background on

[Contact Us](#)



## The Internal Components and Structure of The Optical

The optical module is a very important component in an optical communication system. This article will introduce you to the internal components

[Contact Us](#)



## Wave Optics Software for Analyzing Micro

Simulate and optimize optical devices by combining the COMSOL Multiphysics® software and the add-on Wave Optics Module. Learn more here.

[Contact Us](#)

## The need for current sensing in optical modules for 100G and beyond

In this post, I'll discuss various current-sensing functions in high-bandwidth data communication applications for pluggable optical modules. These pluggable modules remain relatively the same size

[Contact Us](#)



## Optical module design resources , TI

View the TI Optical module block diagram, product recommendations, reference designs and start designing.

[Contact Us](#)





## TI DLP® System Design: Optical Module Specifications

The presentation provides a comprehensive overview of the guidelines specific to designing an optical system with DLP Products and enables customers throughout the design process. Please note that

[Contact Us](#)



### Received signal strength indicator (RSSI) for ST25RU3993

Introduction The ST25RU3993 UHF RFID reader IC comprises an integrated received signal strength indicator (RSSI) for the received I and Q signals. Thanks to this feature it is possible to gauge the

[Contact Us](#)



## Contact Us

---

For datasheets, pricing, or custom fiber access solutions, please visit:  
<https://www.frindel.es>