

OEM Micro Module 2U





OEM Micro Module 2U



Factory Oem Micro Atx Server Case Depth 350mm 2u Rackmount

2u Matx Server Case Main Board: 9.6"*9.6" (245*245mm) Hard Disk: Three 3.5-inch Hard Disks or Two 2.5-inch & One 3.5-inch Hard Disk CD-ROM: No Power: ATX PSU Fan: Two 8025 Fans Expansion

[Contact Us](#)

2u redundant power supply , Newegg

Search Newegg for 2u redundant power supply. Get fast shipping and top-rated customer service.

[Contact Us](#)



SYS-222C-TN , 2U , SuperServer , Products , Supermicro

2U CloudDC with DC-MHS, 24 hot-swap 2.5" NVMe/SATA/SAS bays, 6 PCIe 5.0 x16/x8 slots and 2 PCIe 5.0 x16 AIOM slots

[Contact Us](#)

2U Redundant , 3Y POWER TECHNOLOGY INC.

Corporate Spirit Human Resource Products Redundant Module 1U Redundant 2U Redundant PoE

[Contact Us](#)



Microstream(TM) CO2 NanoPod OEM module

Capnography OEM solutions Microstream(TM) CO2 NanoPod OEM module The Microstream(TM) CO2 NanoPod enables users to integrate all the trusted features of Microstream(TM) capnography into

[Contact Us](#)



Intel® Server System R2000WF Family

Explore a powerful compute platform in a 2U rack mount server form factor that features the energy efficient dual 2nd Generation Intel® Xeon® processor Scalable family.

[Contact Us](#)



Microhard PX2-OEM 1W Miniature 2.4GHz Ethernet/Serial/WIFI

Microhard PX2-OEM 1W Miniature 2.4GHz Ethernet/Serial/WIFI Router MHS185200 Highly Efficient Fpv Image Transmission Module

[Contact Us](#)



Compact Camera Modules for OEM/ODM



Compact Camera Modules Huge collection of CCMs for custom OEM/ODM. Full sensor datasheets and development instructions. Compact form factors with a variety of resolutions. (Up to 13MP) Ultra-low

[Contact Us](#)



Factory Oem Micro Atx Server Case Depth 350mm 2u Rackmount

Metal front panel with vented slats makes this as ideal slim Micro ATX system where looks are important. It has a half height expansion slot which falls past the motherboard giving better clearance.

[Contact Us](#)



OEM

MicroControl OEM-modules facilitate CAN-bus connection in the sensor casing due to customizable boards. Protocol CANopen.

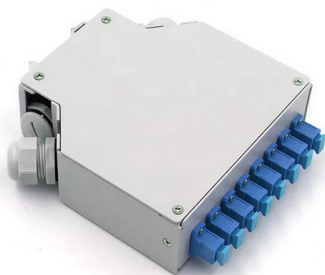
[Contact Us](#)



Leading Rackmount Chassis Server case 1U, 2U, 3U & 4U

Supports OEM/ODM with rapid design and production, reducing lead times. Provides customization services to create competitive products tailored to customer requirements. Offers a variety of 19"

[Contact Us](#)





Microstream(TM) nanoMediCO2 OEM module

The Microstream(TM) nanoMediCO2(TM) OEM module is designed for efficiency and flexibility and can be integrated into a wide range of host monitors and devices.

[Contact Us](#)



BigTwin® 2U Twin Architecture with 2 or 4 Nodes

Supermicro BigTwin servers are optimized for virtualization, cloud, and hyperscale/hyperconverge applications in a 2U form factor with 4 or 2 nodes.

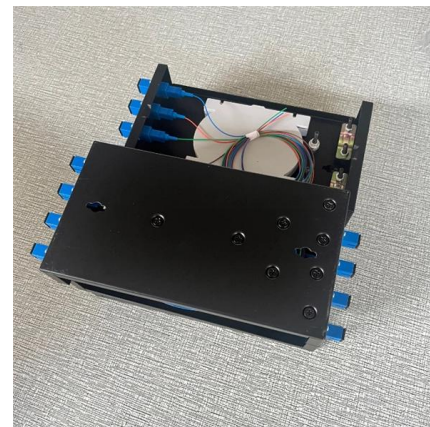
[Contact Us](#)



Microstream(TM) microMediCO2 OEM Module

The Microstream(TM) microMediCO2 OEM Module makes etCO2 monitoring simple and accurate, even in the smallest & most portable monitors.

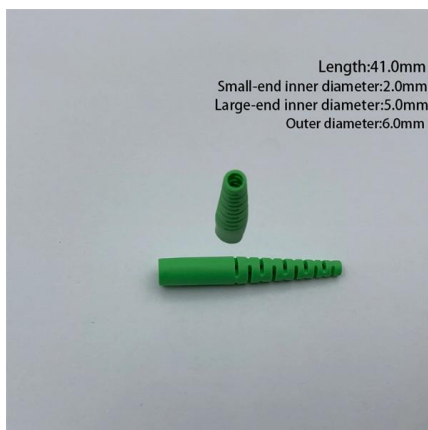
[Contact Us](#)



SYS-622B-TRT , 2U , SuperServer , Products , Supermicro

2U Mainstream with 6 PCIe 5.0 slots and dual 10GbE LAN

[Contact Us](#)



2U Rackmount Chassis



AX61223TM 2U Rackmount Chassis for ATX/Micro
ATX Motherboard Status: Available Datasheet
(PDF) Add to Compare

[Contact Us](#)



M6200 Series 2U Managed Chassis for 10G WDM

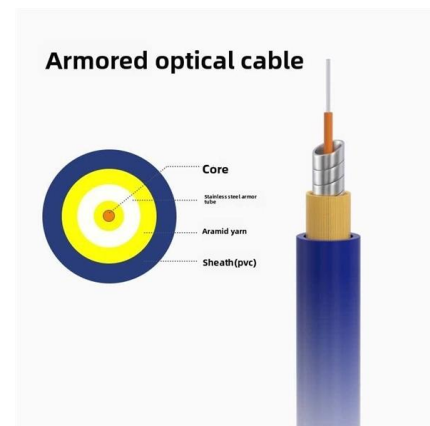
The M6200 2U managed chassis supports hot-swappable key components,

[Contact Us](#)

Gold Series SYS-222H-TN , 2U , SuperServer , Supermicro

Ready to deploy SYS-222H-TN ships within 24 hrs. 2U Hyper with 8 hot-swap 2.5" NVMe/SAS/SATA bays and 4 PCIe 5.0 slots + up to 2 PCIe 5.0 x16 AIOM slots

[Contact Us](#)



Single Processor

Boost reliability, efficiency & scalability with Supermicro's 2U single processor rack servers. Optimal for small & mid-size workloads for cloud & enterprise

[Contact Us](#)





SYS-242B-NR , 2U , SuperServer , Products , Supermicro

For more details on PCIe slot configuration options, please refer to the system callout images above.) How easy is it to find the information you are looking for?

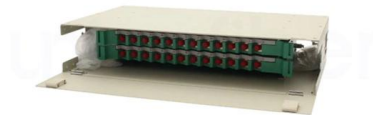
[Contact Us](#)



Product: Electro-Optical Module EOM-O2-micro

Contactless and Micro-invasive Oxygen Measurement Electro-Optical Module EOM-O2-micro The EOM-O2-micro is a precise single channel OEM solution for

[Contact Us](#)



G2 Digital

An industry-recognised OEM with a nearly 20-year heritage in manufacturing specialist rack mount computers and compact PCs, G2 Digital's exceptionally

[Contact Us](#)



2U Rackmount Servers

2U rack servers with 1- to 4-socket AMD, Intel, and Ampere CPUs, NVMe drive bays, and expansion slots for GPUs, networking, and storage for scalable, energy

[Contact Us](#)

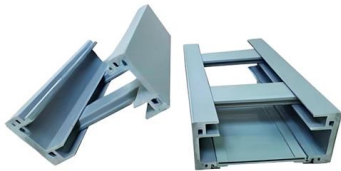




Modator 2U Technical Specifications

When installed in the server via Modator slots, each module can work independently to convert high-quality audio and video signals to and from NDI® and other IP streams.

[Contact Us](#)



MGX 2U

Chenbro provides the L3 server chassis and modules without PCBA. Systems for enterprise. The innovative modular architecture of these systems sets a new standard for AI. infrastructure and

[Contact Us](#)

2U

CPU: Dual 2nd Generation Intel® Xeon® Scalable Processors Chassis: 2U / 1 Node Drive: 12 Hot-Swap 3.5" SATA3 RAM: 24 DDR4 DIMM Slots Network Ports: 4

[Contact Us](#)



Contact Us

For datasheets, pricing, or custom fiber access solutions, please visit:
<https://www.frindel.es>