

# Nvlinkai server





## Overview

---

With low latency, massive networking bandwidth, and all-to-all connectivity, the sixth generation NVIDIA NVLink™ and NVLink Switch are designed to accelerate training and inference for faster reasoning and agentic AI workloads. Reaching the highest performance for the latest AI models requires seamless, high-throughput GPU-to-GPU communications across the entire. NVIDIA NVLink is a revolutionary high-speed GPU interconnect architecture that fundamentally transforms the way graphics accelerators are coupled with CPUs and with each other. Introduced in 2016 with the NVIDIA Pascal™ P100 GPU, NVLink provides up to 5× the bandwidth of PCIe 3. NF5688M6 is a new generation of NVLink AI server developed by IEIT for ultra-large-scale data centers with high performance, high compatibility, and incredible expandability. Intel chief executive Lip-Bu Tan has revealed that the company is co-developing a custom Xeon processor with Nvidia that fully integrates Nvlink, targeting artificial Intelligence host nodes alongside its upcoming Diamond Rapids and Coral Rapids server chips.



## Nvlinkai server

---

### **NVIDIA Launches Vera CPU, Purpose-Built for Agentic AI**

NVIDIA today launched the NVIDIA Vera CPU, the world's first processor purpose-built for the age of agentic AI and reinforcement learning --

[Contact Us](#)



### **Intel plans custom Xeon with fully integrated Nvidia**

Intel chief executive Lip-Bu Tan has revealed that the company is co-developing a custom Xeon processor with Nvidia that fully integrates Nvlink, targeting artificial

[Contact Us](#)



### **Scaling AI Inference Performance and Flexibility with**

The exponential growth in AI model complexity has driven parameter counts from millions to trillions, requiring unprecedented computational resources

[Contact Us](#)

### **NVLink & NVSwitch: Fastest HPC Data Center Platform**

With low latency, massive networking bandwidth, and all-to-all connectivity, the sixth generation NVIDIA NVLink(TM) and NVLink Switch are designed to accelerate



### NVIDIA, Partners Drive Next-Gen Efficient Gigawatt AI

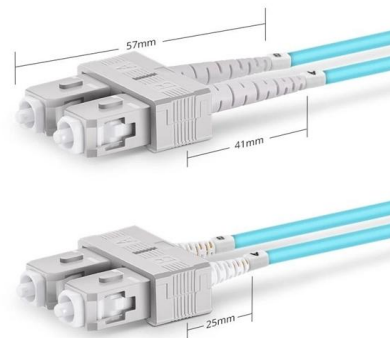
More than 50 NVIDIA MGX partners are gearing up for NVIDIA Vera Rubin NVL72; 20-plus companies will join NVIDIA's growing ecosystem of

[Contact Us](#)

### System Design For The AI Era: Nvidia Scales Up AI

The enhancements to the NVLink Switch combined with extensive system design allow for one of the densest server configurations, which translates

[Contact Us](#)



Duplex SC UPC

### NVIDIA Unveils NVLink Fusion for Industry to Build Semi-Custom AI

MediaTek, Marvell, Alchip Technologies, Astera Labs, Synopsys and Cadence are among the first to adopt NVLink Fusion, enabling custom silicon scale-up to meet the requirements of

[Contact Us](#)





## Top 12 NVIDIA GPUs for AI Training & Inference in 2026

Supports NVIDIA vPC/vApps, RTX Virtual Workstation, and Virtual Compute Server For organizations seeking cloud-based alternatives with stronger AI inference performance, GPUs such as the

[Contact Us](#)



## NVLink vs. PCIe: Choosing the Best Option for NVIDIA

Understand the differences between NVLink and PCIe editions of NVIDIA AI servers and discover how to select the ideal solution based on your

[Contact Us](#)

## Nvidia Is Opening Its NVLink Technology to Others: But Is That Bullish

What Nvidia is doing This past weekend, Nvidia announced NVLink Fusion, enabling system manufacturers to integrate NVLink technology in servers that don't contain Nvidia chips.

[Contact Us](#)



## NVIDIA Unveils NVLink Fusion for Industry to Build Semi-Custom AI

"Low-latency and high-bandwidth scale-up interconnects with native support for memory semantics is critical for maximizing AI server utilization and performance. By expanding our scale-up

[Contact Us](#)



## **NVIDIA NVLink: How It Works, Use Cases & Critical**

NVLink is a high-speed interconnect technology developed by NVIDIA to improve data transfer between GPUs and CPUs.

[Contact Us](#)



## **Qualcomm announces data center CPUs, will support**

Qualcomm is coming back to the data center market with a new, unnamed, server CPU. The processors will support Nvidia's NVLink Fusion,

[Contact Us](#)

## **NVIDIA NVLink Explained: A Guide to the GPU**

Server OEMs like Supermicro and Dell now offer motherboard with 2x or 4x NVSwitch connectivity for NVLink GPU servers. Even cloud providers (Azure,

[Contact Us](#)



## **NVIDIA's NVLink Spine: Reinventing the Data Center for**

In March 2024, NVIDIA unveiled the NVLink Spine, a transformative interconnect system designed to scale AI supercomputing across entire racks of

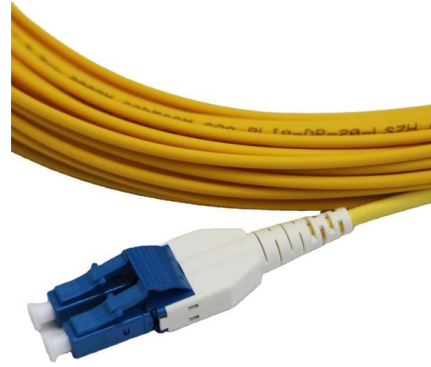
[Contact Us](#)



### **NF5688M6 , AI Servers , meta brain® Artificial**

NF5688M6 is a new generation of NVLink AI server developed by IEIT for ultra-large-scale data centers with high performance, high compatibility, and incredible

[Contact Us](#)



### **NVIDIA Tesla V100 , NVIDIA**

By pairing NVIDIA CUDA ® cores and Tensor Cores within a unified architecture, a single server with Tesla V100 GPUs can replace hundreds of commodity CPU

[Contact Us](#)

### **NVIDIA Unveils NVLink Fusion for Industry to Build Semi**

NVLink Fusion NVIDIA NVLink Fusion lets industries create semi-custom AI infrastructure with a vast ecosystem of partners building with NVIDIA

[Contact Us](#)



### **What Is NVLink? , NVIDIA Blogs**

NVLink is a high-speed interconnect for GPU and CPU processors in accelerated systems, propelling data and calculations to actionable results.

[Contact Us](#)



## Introducing NVIDIA HGX A100: The Most Powerful

Most powerful server platform for AI and HPC  
NVIDIA is working closely with our ecosystem partners to bring the HGX A100 server platform to the

[Contact Us](#)



## Build Semi-Custom AI Infrastructure , NVIDIA NVLink

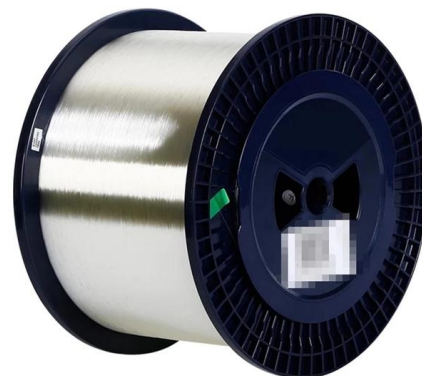
NVIDIA NVLink(TM) Fusion is a rack-scale AI infrastructure platform that enables hyperscalers and custom ASIC designers to integrate custom CPUs and XPU's

[Contact Us](#)

## Nvidia redesigns 72-GPU AI server racks after Blackwell

Nvidia is experiencing more problems with its Blackwell GPUs, with the AI processors reportedly overheating when linked together in 72-chip data

[Contact Us](#)



## Nvidia announces NVLink Fusion to allow custom CPUs

NVLink has served as one of the key technologies that assured Nvidia's dominance in AI workloads, as communication speeds between GPUs

[Contact Us](#)

## NVIDIA Networking Solutions for AI: NVLink, InfiniBand and Spectrum-X



NCCL is topology-aware, optimizing communication paths based on interconnects like PCIe, NVLink, or InfiniBand for high bandwidth and low latency. NCCL integrates seamlessly with deep learning

[Contact Us](#)



### **NVIDIA Announces NVLink Fusion: Bringing NVLink to**

As part of today's headline Computex keynote, NVIDIA announced a new member in their suite of NVLink interconnect technologies: NVLink Fusion.

[Contact Us](#)

### **NVIDIA NVLink and NVIDIA NVSwitch Supercharge**

To achieve real-time responses for large language models, using multiple GPUs with techniques like tensor parallelism is necessary to process

[Contact Us](#)



### **Integrating Semi-Custom Compute into Rack-Scale**

NVIDIA is re-architecting data centers for efficient AI workloads delivery with rack-scale architecture, enabling many accelerators to work together

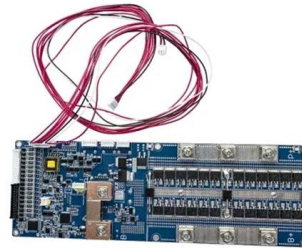
[Contact Us](#)



## **NVIDIA NVLink: How It Works, Use Cases & Critical**

NVLink is a high-speed interconnect technology developed by NVIDIA to improve data transfer between GPUs and CPUs. It addresses the limitations of the PCI

[Contact Us](#)



## **The Ultimate Guide to Nvidia NVLink: Maximizing GPU**

Setting Up NVLink in Your Server For the best GPU performance on your server, do the following to establish NVLink: Check Compatibility: Make sure

[Contact Us](#)

## **Contact Us**

---

For datasheets, pricing, or custom fiber access solutions, please visit:  
<https://www.frindel.es>