

North Macedonia Wall-Mounted Patch Box 8 Cores





North Macedonia Wall-Mounted Patch Box 8 Cores



Wall Mount Fiber Patch Panels

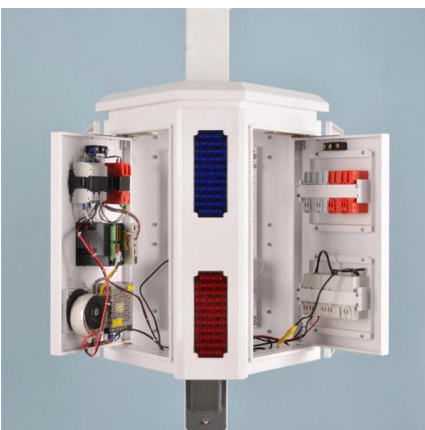
We offer NEMA rated enclosures for top-of-the-line quality and durability on indoor and outdoor fiber patch panels. A loaded fiber optic wall mount termination box comes equipped with cable routing

[Contact Us](#)

8 Cores SC UPC Indoor Wall Mount Optical Fiber Patch Panel Distribution

8 Cores SC UPC Indoor Wall Mount Optical Fiber Patch Panel Distribution Terminal Box
Description: - The KCO-FTB-WM08 is with

[Contact Us](#)



8 Port Fiber Optic SC Patch Panel Wall Mount Fiber

8 Port Fiber Optic SC Patch Panel Wall Mount Fiber Enclosure 10 inch wide patch panel is well suited for home and SMB applications

[Contact Us](#)

Wall-Mount Panel

Wall-Mount Panel Belden offers clean, simple, and lightweight Wall-Mount Panels within its DCX, FiberExpress (FX) UHD and ECX ecosystems. The versatile DCX

[Contact Us](#)



Indoor Wall Mount 8 Cores FTTH Mini Patch Panel 8 Port Fiber

Optic Fiber Termination Box-Wall Type---YY-T02
1. Basic structure (1).Shell material: 8C fiber optic patch panels are typically made of sturdy metal or high-strength plastic to provide good protection

[Contact Us](#)



Indoor Wall Mount Fiber Optic Patch Panels FTBT08

The FTBT08 Series Wall Mount Fiber Optic Patch Panel is designed for indoor use. This patch panel provides a secure and organized way to store optical fiber

[Contact Us](#)



8Cores Fiber Optic Distribution Box IP Grade IP65 Wall

8Cores Fiber Optic Distribution Box IP Grade IP65 Wall Mounted Type, find complete details about 8Cores Fiber Optic Distribution Box IP Grade IP65 Wall Mounted

[Contact Us](#)





Metal 8 Ports Fiber Terminal Box for 8 Core Splice and

Description The 8 ports metal fiber terminal box is similar to the fiber optic patch panel in appearance and function, which designed to connect optical fiber cable

[Contact Us](#)



8-Core Optical Distribution Box FTTH SC Adapter

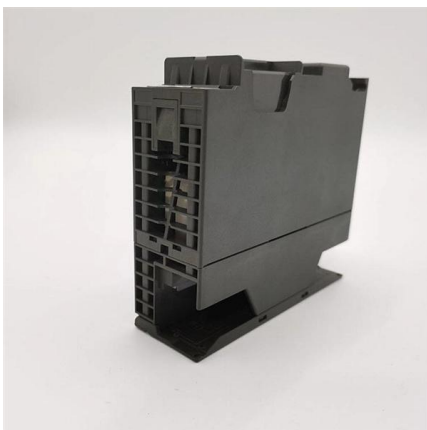
8-Core Optical Distribution Box FTTH SC Adapter
Material: ABS-FR, UV resistant, rain resistant
Fiber splicing, fixing, storage, distribution, etc. all in one Cable,

[Contact Us](#)

Amazon .uk: Wall Mount Patch Panel

Explore a wide range of wall mount patch panels with 8, 12, and 24 port options. Perfect for home and office networks.

[Contact Us](#)



8 Cores Fibers Mini Small Compact Wall Mount Fiber

8 Cores Fibers Mini Small Compact Wall Mount Fiber Optic Patch Panel ODF Termination Box Small Size, Find Details and Price about Optical Distribution

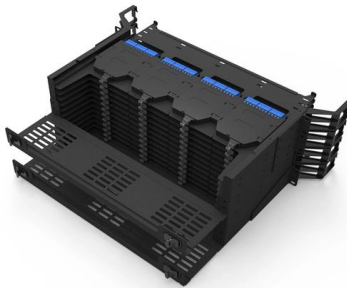
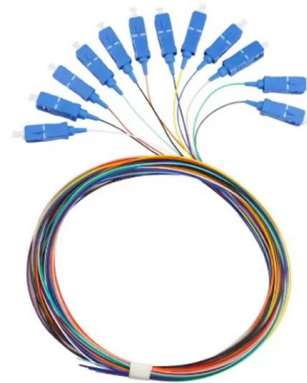
[Contact Us](#)



8 Core NAP ODP FTB FTTH 3 Inlet Fiber Access

The 8 port Fiber Distribution Box is sturdy in structure, lightweight in size, and

[Contact Us](#)



Metal 8 Ports Fiber Terminal Box for 8 Core Splice and

The 8 ports terminal box supports a variety of front adapter panel, allowing termination of SC, LC, FC, and ST fiber optic connectors, and accommodates up

[Contact Us](#)

8 Cores SC UPC Indoor Wall Mount Optical Fiber Patch Panel Distribution

- The KCO-FTB-WM08 wall-mounted fiber optic distribution box provides efficient cable connections between outside plant cables and

[Contact Us](#)



8 Core Fiber Optic Termination Box

The MBN-FOSC-A18-8 is an outdoor 8 core fiber optic termination box designed to serve as a termination point for feeder cables connecting to drop cables within

[Contact Us](#)

OPT-226 Wall Mounted Fiber Termination



Box FTTH 8 cores box

This box is used as a termination point for the feeder cable to connect with drop cable in FTTH communication network system. It integrates fiber splicing, splitting, distribution, storage and cable

[Contact Us](#)



NEMA Wall Mount Fiber Patch Panels and Enclosures

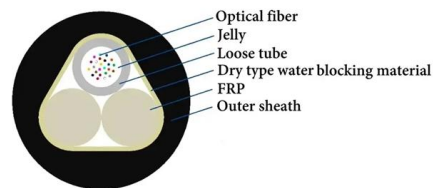
In addition, these NEMA Wall Mount Fiber Enclosures accommodate cross-connect functions including termination, splicing, and inter-connects for outside plant

[Contact Us](#)

Fiber Patch Panel 8 Port Wall Mount Mini ODF

The 8-Port Wall Mount Mini ODF Fiber Patch Panel, lightweight and compact, is perfect for FTTH applications. It securely connects and protects fiber cables and

[Contact Us](#)



8-Port Cat6A Shielded Wall Mount Patch Panel

TRENDnet's 8-Port Cat6A Shielded Wall Mount Patch Panel, model TC-P08C6AS, is ideal for gigabit and 10G Copper Ethernet network applications. This patch panel

[Contact Us](#)



Wall Mounted 24 Cores FTTH Fiber Optic Terminal Box

Wall Mounted 24 Cores FTTH fiber optic terminal box 24 SC Ports OTB Fiber Distribution Box Outdoor OTB-0216-E is great for jointing fiber cable

[Contact Us](#)



SJ-OTB-SY-04 8 Cores Wall Mount Fiber Distribution Box

This 8-core distribution hub delivers enterprise-grade performance with advanced cable management, environmental protection, and flexible installation options for

[Contact Us](#)

Low Price 8 Core Fiber Patch Panel Wall Mount Design

Discover our 8-core fiber patch panels, ideal for bulk orders starting at 1 unit. Available in various interfaces, suitable for resale and supplied at prices from \$1.5

[Contact Us](#)



FTTX 8 Cores Optical Fiber Distribution Wall-mounted Indoor and

Max Capacity Splice 8 Fibers (2trays,12 fiber/tray) PLC Splitter 1pcs of 1x8 Nos of Adapters 8pcs of SC (max) Weight 0.44kg Colors White Protection Level IP4X Flame retardant performance Non-flame

[Contact Us](#)



GPZ/S-8 FTTH 8 cores wall mounted metal fiber Optic patch panel

Gpz/s-8 FttH 8 Cores Wall Mounted Metal Fiber Optic Patch Panel - Buy 8 Cores 12 Cores Fiber Optic Patch Terminal Box,8 Cores Wall Mounted Metal Fiber Optic Patch Panel,8 Cores Fiber Optic Patch



[Contact Us](#)

Fast shipment in stock Default white and black, contact customer service for notes

4U standard model



Fiber Patch Panel 8 Ports Installed 8 Core SC/UPC

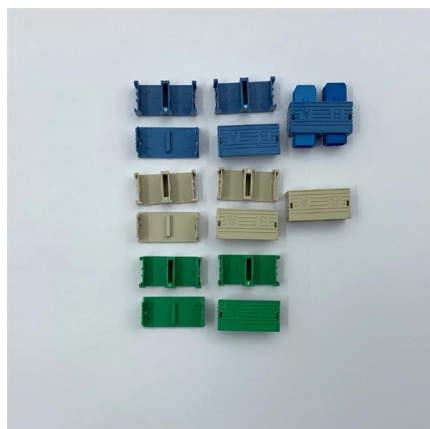
Fiber Patch Panel 8 Ports Installed 8 Core SC/UPC Coupler with Pigtail terminal

[Contact Us](#)

8 Cores SC UPC Indoor Wall Mount Optical

- The KCO-FTB-WM08 wall-mounted fiber optic distribution box provides efficient cable connections between outside plant cables and

[Contact Us](#)



FTTX 8 Cores Optical Fiber Distribution Wall-mounted

The equipment is used as a termination point for the feeder cable to connect with drop cable in FTTX communication network system. The fiber splicing, splitting,

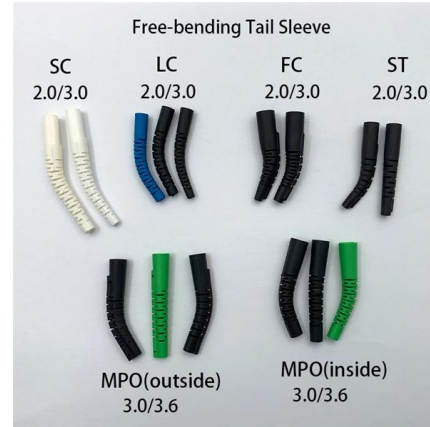
[Contact Us](#)



[Hot Item] FTTH Sc/LC/St/FC MPO
8/12/24/48

FTTH SC/LC/ST/FC MPO 12/24/48/72/96
Port/Cores Fiber Optic ODF Equipment Rack Wall
Mount Terminal Splitter Distribution Box Optical
Patch Panel Fiber

[Contact Us](#)



Contact Us

For datasheets, pricing, or custom fiber access solutions, please visit:
<https://www.frindel.es>