

# **Non-standard distribution box models and dimensions in Southern Europe**





## Non-standard distribution box models and dimensions in Southern

---



### Electrical distribution box 24 modules of 17.5 mm ABS

Front cover with fastening by screws. Fixing to wall using screws (not included). It is fixed directly to the surface. Model for the installation of 24 standard 18mm wide

[Contact Us](#)

### Polyester cabinets-/distribution boxes with door

BARTEC offers nine different types of polyester enclosures with door as distribution boxes for Ex e. The enclosures safely protect against mechanical stress and resist even the most extreme environ

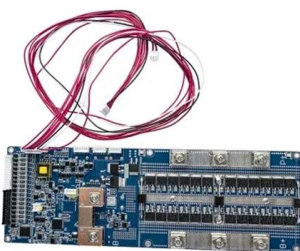
[Contact Us](#)



### Behind the Big Box: understanding the planning

In Europe, very large distribution centres (XXL DCs) are increasingly appearing on planning agendas due to their growing spatial footprint and

[Contact Us](#)



### Distribution Boards & Consumer Units

Distribution boards, together with modular ABB system pro M Compact protection devices and Modular Din Rail Components, can be used for many applications in electrical building installation. Solutions



## **DISTRIBUTION SYSTEM OPERATORS OBSERVATORY**

Yet, not much is known about European distribution system operators (DSOs) and the networks they operate. This lack of knowledge is due to the confidential nature of much of this information as well

[Contact Us](#)



## **Behind the Big Box: understanding the planning-development dialectic**

In the backdrop of these planning responses, this paper aims to contribute to academic insights into the forces shaping the remarkable growth of European distribution centres. We perceive these forces are part

[Contact Us](#)



## **The Civic and Social Dimensions of Food Production and Distribution**

We show that the growing role of consumers and producers in these food networks, not only as individuals but also as citizens often involved in civil society organizations, can directly influence

[Contact Us](#)





## Distribution Boxes Technical Data

Summary of Changes  
Four-pin, One Signal per Port Cable Connector Distribution Box  
Cable Connector Wiring  
Cable Connector Four-pin, One Signal per Port Cable with Terminal Block Connector Distribution Box  
Mechanical Product Selection  
Cable Mechanical (1.3) Additional Resources  
Rockwell Automation Support  
This publication contains the following new or updated information. This list includes substantive updates only and is not intended to reflect all changes. See more on literature.rockwellautomation Logimarkt



## Non-standard boxes - Logimarkt

In addition to Euro-standard boxes, we also produce atypically sized containers. We offer a large assortment of preset dimensions, but can manufacture any

[Contact Us](#)



## Pallet Rack Design: Pallet Dimensions in EU

What are standard pallet dimensions? In Europe, the most common standard pallet size is the EU pallet measuring 800 x 1,200 mm, supporting

[Contact Us](#)

## Eventbrite

Find tickets to your next unforgettable experience. Browse concerts, workshops, yoga classes, charity events, food and music festivals, and more things to do.

[Contact Us](#)



## Different Types of Pallet , Standard Pallet



## Materials and

Global pallet standard sizes and dimensions ISO pallets are available in 6 different sizes, and pallet dimensions vary depending on the region in which they are used.

[Contact Us](#)

## European Standard Distribution Enclosures: Custom DIN Rail

That is why a strong European standard distribution box creates value far beyond its external dimensions. With robust cabinet construction, a practical transparent door, modular DIN rail

[Contact Us](#)



## Distribution Boards

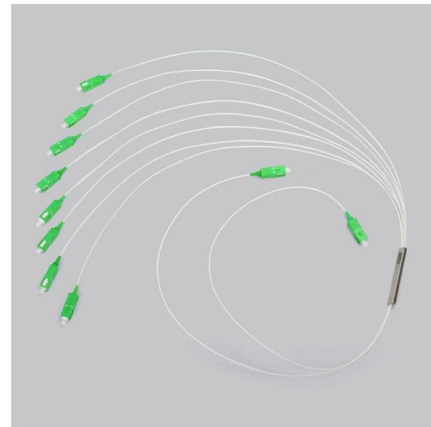
ABB is driving progress for utilities through providing solutions for electrical distribution, and helping make a safer, more productive, and more efficient environment

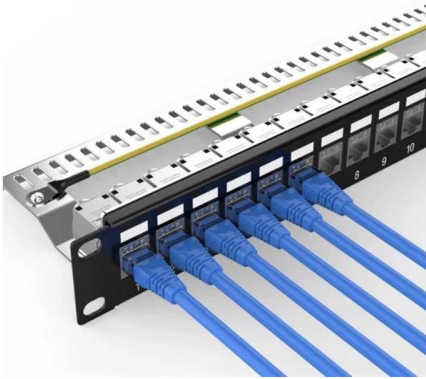
[Contact Us](#)

## Distribution box catalogue , PDF

This document provides specifications for various distribution boxes including dimensions, mounting sizes, and number of ways. It includes specifications for TOP-TS, TOP-TF, TOP-LS, TOP-PS, TOP

[Contact Us](#)





### **MNS® Low Voltage Distribution Board and Power Cabinet**

Features ABB distribution board and power Cabinet conform to GB7251.3-2006. Product includes distribution board, lighting control panel, metering panel, and power cabinet., They are suitable for

[Contact Us](#)

### **(PDF) The civic and social dimensions of food production and**

Int. J. of Soc. of Agr. & Food, Vol. 19, No. 3, pp. 383-401 The Civic and Social Dimensions of Food Production and Distribution in Alternative Food Networks in France and Southern Brazil Claire

[Contact Us](#)



### **Why multilayered distribution works best in Europe**

For the moment at least, the hybrid distribution net-work model is limited to Western Europe. Although companies have shifted some production of high-volume or fast-moving goods to low-cost Eastern

[Contact Us](#)



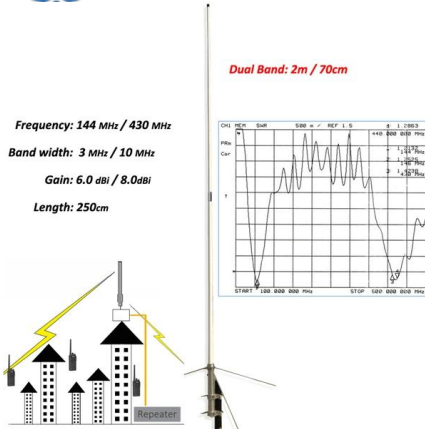
### **Typical European distribution system layouts [19, 24]**

We provide a detailed repository with the identified RFs, RDNs, and RRDNs in multiple data formats compatible with widely employed open-source power flow

[Contact Us](#)



### **A decision-tree framework to select optimal**



### box-sizes for product

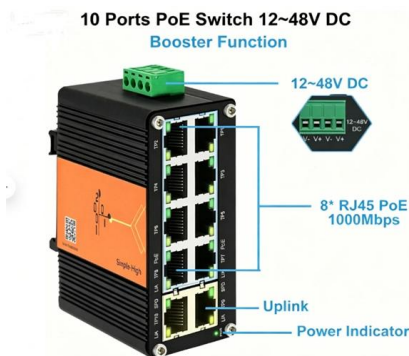
Even by just modifying the existing box dimensions and not adding a new size variant, we achieved a reduction of 4.4% in the shipment volume, contributing to the decrease in non-utilized, air volume

[Contact Us](#)

### Distribution enclosure, Distribution box

Find your distribution enclosure easily amongst the 112 products from the leading brands (RITTAL, BOPLA, ROSE, ) on DirectIndustry, the industry specialist for your professional purchases.

[Contact Us](#)



### North American versus European distribution systems

Layouts, configurations, and applications Distribution systems around the world have evolved into different forms. The two main designs are North

[Contact Us](#)

### Intermodal container

Intermodal containers exist in many types and standardized sizes, but 90 percent of the global container fleet are "dry freight" or "general purpose" containers:

[Contact Us](#)



mbox\_om.pdf



They are used for switching, protection and power distribution circuit breakers installation. Metal distribution boxes are designed for both built-in and on-wall applications.

[Contact Us](#)

### **Eurobox containers**

In addition to the previous models, which are the most commonly used, there are other types of boxes with other dimensions and other production systems that will

[Contact Us](#)



### **Distribution box , PDF**

This document provides specifications for various types of plastic distribution boxes, including their dimensions and features. It describes HA, HK, and LGD series

[Contact Us](#)

### **The Iron Cage Revisited: Institutional Isomorphism and Collective**

The theory of isomorphism addresses not the support in form of open-ended contracts, subsidy, psychological states of actors but the structural de- tariff barriers and import quotas, or favorable tax

[Contact Us](#)

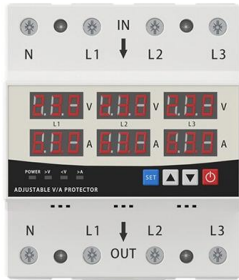




### LED DISPLAY PANEL

CURRENT STATUS CLEARLY VISIBLE

IT CAN CLEARLY SHOW THE CURRENT STATUS AND VOLTAGE STATUS,  
WITH EFFICIENT OPERATION AND RAPID RESPONSE.



### Cable Distribution Box Layout: 10 Industrial Strategies

Optimize your cable distribution box layout for safety and efficiency. Learn industrial best practices using Chuanli's IEC-standard outdoor and custom boxes.

[Contact Us](#)

### Distribution Box

Metal Distribution Box Features Continuously welded seams Foam-in-place seamless gasket 120-degree opening heavy-duty industrial hinges IP66 protection rating against dust and water according

[Contact Us](#)



## Contact Us

For datasheets, pricing, or custom fiber access solutions, please visit:  
<https://www.frindel.es>