

# Mapping of Australian fiber optic cables





## Overview

---

Australia wide NBN interactive Google map This includes current and future rollout information. The SIP map is used to show statutory infrastructure providers (SIPs) and their service areas. Important information: Most premises in the purple "Service available area" can connect to services over the nbn network but may require additional work to be completed first. Service Description: <DIV STYLE="text-align:Left;"><DIV><DIV><P><SPAN STYLE="font-size:12pt">The data represented here was prepared as at 1 July 2020, and was provided by NBN Co to the Department of Infrastructure, Transport, Regional Development and Communications (the Department), and has been.



## Mapping of Australian fiber optic cables

---



### National Network

The AARNet national network consists of thousands of kilometres of fibre optic cable, connecting major cities and regions around Australia.

[Contact Us](#)

### Australian NBN Rollout Maps

Australian Fibre NBN Rollout Maps When is the National Broadband Network (NBN) coming to my suburb? Is my business or home in a current fibre service rollout

[Contact Us](#)



### Submarine Cable Map 2025

Driven by the dedication of its top-notch professionals who tirelessly work to enhance the company's international infrastructure, and a history dating back about 170

[Contact Us](#)



### Internet Infrastructure Map

Explore the physical backbone of the internet with our interactive map of undersea fiber optic cables, peering exchange points, and more. Visualize the growth of

[Contact Us](#)



OM3 Fiber Patch Cable Family



### Map of Australia showing the extent of AARNet and

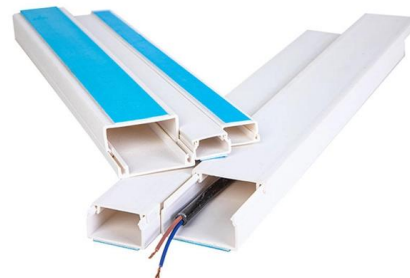
Figure 4 is a map of Australia highlighting the extent of the AARNet fibre network and indicating some of the potential users of the NTFN.

[Contact Us](#)

### Map of Australia showing the extent of AARNet and

In the case of the SKA, these reference signals are generated at a central site and transmitted to the antenna sites via fibre-optic cables up to 175 km in length.

[Contact Us](#)



### National Broadband Network

This mapping information reflects the NBN Fixed Line footprint and Fixed Wireless footprint. The Fixed Wireless coverage shows the area where Location IDs are assigned to NBN Fixed Wireless as the

[Contact Us](#)







### SMAP Australia's Newest Undersea Cable

Overview Sydney Perth A new transcontinental submarine cable system connecting Sydney, Melbourne (Torquay), Adelaide and Perth (S-M-A-P), SMAP

[Contact Us](#)



### Australia Telecoms Infrastructure Maps

Where appropriate, Market Clarity's Fibre Infrastructure maps indicate Exchange Service Area (ESA) boundaries and exchange locations. All map prices are

[Contact Us](#)

### NBN Rollout Map: Track and See Live Updates for all Australia

Use this interactive NBN rollout map to track the network's progress and check to see when it's due to arrive in your city or town.

[Contact Us](#)



### Fibre network mapping: a comprehensive guide

Fibre network mapping is a critical process in the planning, deployment, and management of fibre optic networks. It involves creating a detailed visual

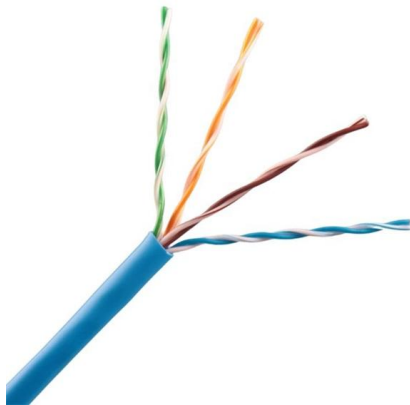
[Contact Us](#)



## Fiber Mapping: How to Make a Fiber Network Map Yourself

Doing some fiber optic mapping, FTTH planning, fiber cable network design is not that simple. And it all starts from and comes down to a map. But

[Contact Us](#)



## Underground Fibre Optic Cable Locating

Accurately locate underground fibre optic cables with Geoscope Locating in Sydney. Our expert underground fibre optic cable locators use

[Contact Us](#)

## ITU

Show me range to terrestrial fiber nodes on the map? Show the SAIL subsea cable on the map Is the ITU building in Geneva Switzerland within 10 km of a fibre node?

[Contact Us](#)



## 820 Australian Fibre NBN Rollout Maps

The Fibre NBN is being rolled out across Australia. See over 820 detailed regional maps of where Fibre NBN is planned, currently cabling or NBN ready.

[Contact Us](#)



**nbn® rollout map , nbn**

Most premises in the purple "Service available area" can connect to services over the nbn network but may require additional work to be completed first. On rare

[Contact Us](#)



### Sydney-Melbourne-Adelaide-Perth (SMAP) Submarine Cable

This interactive submarine cable map shows global undersea and underwater fiber optic cables connecting continents and countries worldwide. Explore cable routes, landing stations, system status

[Contact Us](#)

### Our Comprehensive Network Map , Aussie Broadband

This network map shows you the Aussie Broadband infrastructure as of January 2023, including our backhaul links, peering/transit, and Points of Presence.

[Contact Us](#)



### Submarine Cable Map

The Submarine Cable Map is a free and regularly updated resource from TeleGeography. TeleGeography's comprehensive and regularly updated

[Contact Us](#)



## Fiber Map of the World 2026

Submarine and terrestrial fiber optic cables form the backbone of modern global communication, carrying data across continents at incredible speeds. These networks enable internet access,

[Contact Us](#)



## NBN\_Fixed\_Line (MapServer)

Service Description:

The data represented here was prepared as at 1 July 2020, and was provided by NBN Co

[Contact Us](#)

## Contact Us

---

For datasheets, pricing, or custom fiber access solutions, please visit:  
<https://www.frindel.es>