

# **Luxembourg Installation of 200G Liquid-Cooled Switch**





## Luxembourg Installation of 200G Liquid-Cooled Switch

---



### Exploring the Future of AI Networking: Liquid-Cooled Switches on the

Imagine a data center where even the most powerful switches run cool and stable--without noise, thermal throttling, or energy waste. Cisco is actively innovating in direct-to-chip

[Contact Us](#)

### Liquid Cooling

A full suite of liquid cooling options is now available across our data centre portfolio, capable of meeting the demands of the most powerful AI and high-performance workloads.

[Contact Us](#)



### Redefining liquid cooling from the server to the switch

BT kicked off the trials with a network switch cooled using Iceotope's Precision Liquid Cooling technology and Juniper Networks QFX Series Switches.

[Contact Us](#)



### iC7 Series Liquid-cooled System Modules

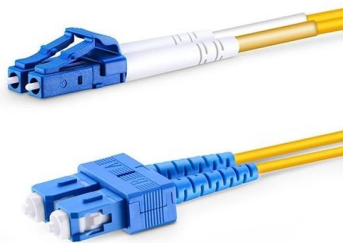
The liquid-cooled system modules are available with different functions: inverter, active front-end, grid converter, and DC/DC converter modules. The modules can be paralleled for higher power ratings.



### CHILLER INSTALLATION GUIDE & USER MANUAL

G& D large capacity chillers are reciprocating type, air-cooled, liquid chillers, designed for installation outdoors. This chiller utilizes independent condenser circuits, with one compressor per circuit.

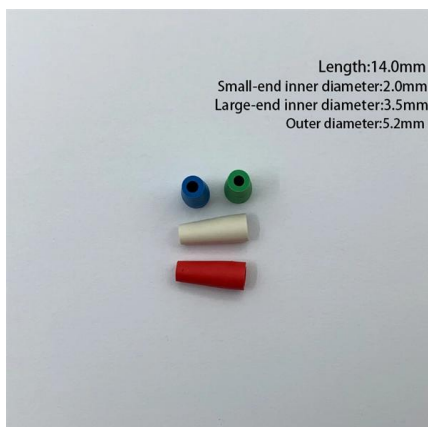
[Contact Us](#)



### Liquid Cooling

Liquid cooling is a heat transfer mechanism in which the coolant (typically a dielectric fluid or water), via direct or indirect contact with a high-power

[Contact Us](#)



### Generac Power Systems, Inc.

Thank you for purchasing this compact, high performance, air-cooled, engine-driven generator. It is designed to automatically supply electrical power to operate critical loads during a utility power

[Contact Us](#)

### Two-Phase Immersion-Cooled 100G Switch



The design, material, and manufacturing specifications offer complete liquid cooling compatibility, allowing the switch to maintain high performance and reliability in a high-temperature, high-density

[Contact Us](#)



**Pressure operated water valve, types WAFX and WVS**

Pressure operated water valve, types WAFX and WVS Pressure operated water valves types WAFX and WVS are used for regulating the ow of water in refrigeration plants with water-cooled

[Contact Us](#)



**DynaNET 100G-01**

The DynaNET 100G-01 is a high performance switch for Automotive and rugged applications, where exteme levels of performance, reliability and compactness

[Contact Us](#)



**Liquid-cooled chassis power units**

Liquid cooling systems are considerably more efficient at dissipating heat losses than air cooling systems. As a result, liquid-cooled devices are much more compact than air-cooled units with the

[Contact Us](#)





## What Does it Take to Make the Switch to Liquid Cooling?

The liquid is circulated through liquid-cooled servers, and the heat is radiated from the liquid through an external heat exchanger to the room. The room air-cooling infrastructure is utilized to remove the

[Contact Us](#)



## NVIDIA GB200 NVL72 Liquid-to-Air Rack Solutions

To address this gap, AMAX developed a solution that brings liquid-cooled infrastructure into environments originally designed for air-cooled systems. The

[Contact Us](#)



## Installation Operation Maintenance

guide to good practice in the installation, start-up, operation, and maintenance by the user, of Trane RTWD chillers. They do not contain full service procedures necessary for the continued successful

[Contact Us](#)



## Arista developing liquid-cooled network switches

Networking firm Arista is developing liquid-cooled switches and racks. As reported by NetworkWorld and Converge Digest, the company outlined its

[Contact Us](#)



## TS 103 586

This clause covers liquid cooling at the cabinet level, which means any liquid cooled exchanger either in the cabinet or very close (distance HEX cabinet lower than 10 cm) to the cabinet.

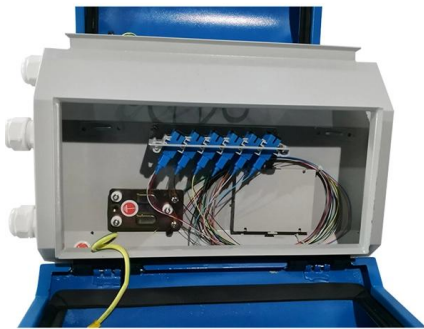
[Contact Us](#)



## Introduction to NVIDIA GB200 Superchip and Liquid

Global AI chip leader NVIDIA (with its new GB200 featuring liquid cooling) and AI server manufacturer Supermicro (which plans to expand liquid

[Contact Us](#)



## Liquid Cooling for Supermicro Servers

Why Liquid Cooling Today, many servers consume greater than 1 kW to power the CPUs, GPUs, Memory, and any other hardware installed within a single chassis. Multiplying this amount of power

[Contact Us](#)



## ACS Liquid Cooling Cold Plate Requirements Document

Introduction This document outlines the requirements related to Liquid Cooling Cold Plate technology, which may be used in the Open Compute Project (OCP) environment. Liquid cooling technology is

[Contact Us](#)



### Deploying liquid cooling in the data center

The IT and facility team can leverage partner project services to prepare for on-site liquid cooling system installation, commissioning, and startup. As a major infrastructure project, this requires careful

[Contact Us](#)



### Exploring the Future of AI Networking: Liquid-Cooled Switches on the

Cisco is actively innovating in direct-to-chip liquid cooling for high-performance switches, laying the groundwork for solutions that will enable seamless and scalable AI at unprecedented

[Contact Us](#)

### Hot Interconnects: Arista Outlines Pathways to Energy

The design accommodates up to 16 x 2U switch blades with tool-less installation, tightly located liquid quick disconnects, and generous space for cable

[Contact Us](#)



Length:17.1mm  
Small-end inner diameter:1.2mm  
Large-end inner diameter:3.5mm  
Outer diameter:5.5mm



### MGX Accelerated Computing Rack and Trays Specification Revision

5. Overview This specification describes and documents a rack and tray infrastructure design that supports blind mate liquid cooling, intra-rack tray interconnectivity zones, higher bus bar power, rack

[Contact Us](#)



### Model FS200 Instructions

Flow Switch The Safgard FS200 Flow Switch is used to start or stop electrically operated equipment such as burners, pumps or alarms by detecting liquid flow through piping.

[Contact Us](#)



### appliance motors ADV200-LC LIQUID COOLED INVERTER

Liquid cooling systems of electrical and mechanical units, widely used in plastic processing equipment, significantly reduces the size of the electrical drive. Thanks to a very robust dissipation system, the

[Contact Us](#)

### Q3450-LD Liquid-Cooling System

Before insertion, release the gas using the open-ended hose from the maintenance kit. Connect the hose to either of the two FRU hoses to

[Contact Us](#)



## Contact Us

---

For datasheets, pricing, or custom fiber access solutions, please visit:  
<https://www.frindel.es>