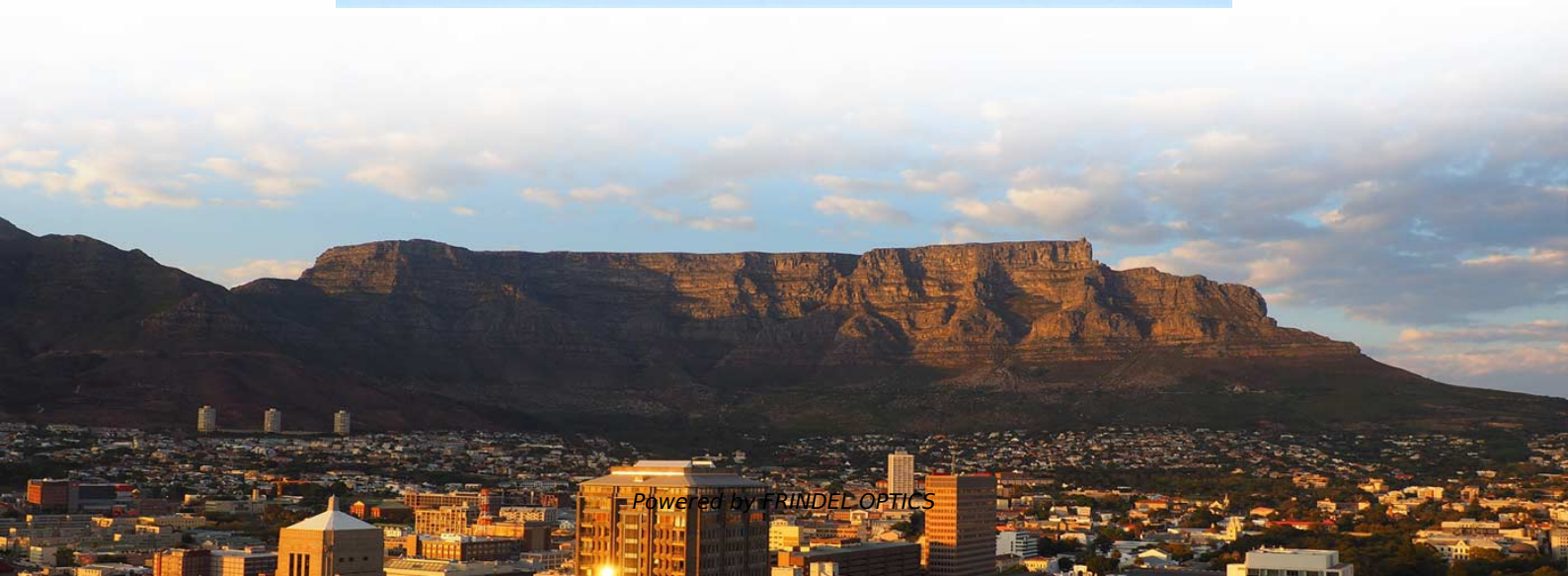


Low-voltage feeder cabinet plug-in busbar





Low-voltage feeder cabinet plug-in busbar



SIVACON

Explore products Optimize operations and maintenance with integrated digital solutions and low-voltage systems for power distribution. Our busbar trunking

[Contact Us](#)

Standard cubicle configurations for a medium voltage

MV metal-enclosed switchgear This technical article will shed some light on the standard design of medium voltage metal-enclosed switchgear

[Contact Us](#)



Low Voltage Complete Set Distribution Cabinets for Power

Box-Type Low Voltage Complete Set Distribution Cabinet The box-type cabinet features a compact, fully enclosed design that provides excellent protection for internal electrical components. Constructed

[Contact Us](#)



Busway , ABB Electrification U.S.

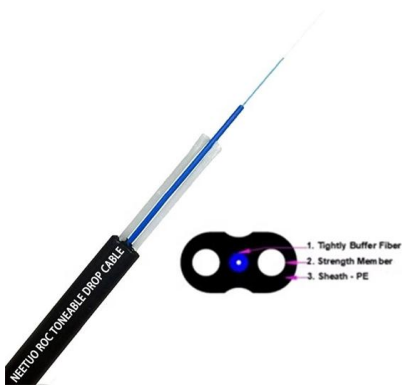
Commercial & Industrial Grade ReliaGear busway Custom-designed, modular electrical power distribution system available in both feeder and plug-in styles, up to 5000 A.



Low Voltage Busbar Trunking Guide , PDF , Electrical

This document provides guidance on low voltage busbar trunking systems according to BS EN 61439-6. It defines busbar trunking systems and components, and

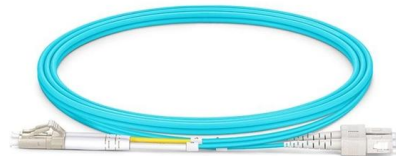
[Contact Us](#)



Busway

Available in both plug-in and feeder busway types. Designed specifically to allow maximum flexibility, ease installation and offer electrical efficiency in the

[Contact Us](#)



Busbar Power Distribution Explained: Benefits, Types,

Discover the benefits, types, and applications of busbar power distribution systems. Learn why busbars offer efficient, safe, and space-saving

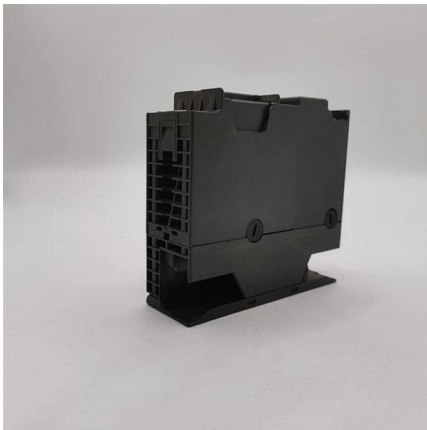
[Contact Us](#)



Busbar System 250A

The busbars thus enable lateral 250 A power supply. This increases the range of possible applications. Especially in applications involving high-current devices,

[Contact Us](#)



MERLIN GERIN SAIF FEEDER PILLARS, CABINETS, FUSEGEAR

MoD Defence Estates Specification 039 Feeder Pillars Merlin Gerin SAIF feeder pillars are specified to provide low voltage electrical distribution to MoD sites replacing conventional design feeder pillars.

[Contact Us](#)

Catalog Extract LV 10 · 10/2022

Our busbar systems for electrical installations offer a particularly easy way of fitting distribution systems with electrotechnical components. The modular design saves space, while quick assembly contacts

[Contact Us](#)



Busbar Systems , Power Busbars , EAE Electric

Power Busbar Systems are designed for the safe transport and distribution of electrical energy, ranging from 32A to 6300A, ensuring efficiency and reliability.

[Contact Us](#)



ZUCCHINI BUSBAR SYSTEM

The system concept applied to the busbars gives them the characteristics of an industrialized product which translate into significant advantages for the end user, not least that of greater reliability and the

[Contact Us](#)



Busway 101 everything you need to know

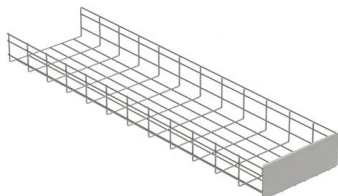
With busway, facilities installing new equipment can simply add more bus plugs to their existing busway, while companies that need to move equipment can quickly and easily reconfigure their existing

[Contact Us](#)

Design and installation of low voltage busbar trunking

Feeder Trunking Run Feeder trunking runs are used for the interconnection between switchboards or switchboard and transformer. Busbar

[Contact Us](#)



Innovative Busway Systems , Starline Power

Starline Track Busway is customizable for any environment, space, or power requirement. The overhead power system gives you flexibility for the future--you

[Contact Us](#)



Busbar Systems & Electrical Trunking , Schneider

Design a flexible and efficient power distribution system with Schneider Electric UK's innovative busbar systems. Explore Canalis busbars for a modular approach to

[Contact Us](#)



ABB Busway , Products

ABB Busway provides a safe, reliable and cost-effective means of distributing electrical power in commercial and industrial applications. As an alternative to

[Contact Us](#)



RY250714 Cabinet , Cabinets with busbar and base , Ensto

The units have main busbar connections suitable for 1200A and neutral busbar suitable for 1000A along with generator connection on the neutral only in

[Contact Us](#)



WebiTelecomms Cabling



Busbar System , KX electrical busbar systems , EAE

E-Line KX Series Compact Busbar Systems are used in horizontal and vertical energy distribution and transmission in Bolt-on (supply from the junctures) and

[Contact Us](#)



Nordiacab low voltage distribution cabinet

Nordiacab low voltage distribution cabinets
Nordiacab low voltage distribution cabinets by ABB are easy to install and built to last. Based on our proven platform, they include improvements and features

[Contact Us](#)



ZUCCHINI BUSBAR SYSTEM

A prefabricated busbar conduit is composed of a main unit (rectilinear element) to which devices are subsequently connected to perform different functions: power supply boxes, fixing devices (wall or

[Contact Us](#)

Industrial Power Distribution Solutions

Busbar systems are becoming the predominant solution for manufacturers across nearly all global industries as a safer, more effective, and efficient method of

[Contact Us](#)



GRL Low-Voltage Enclosed Busbar Systems

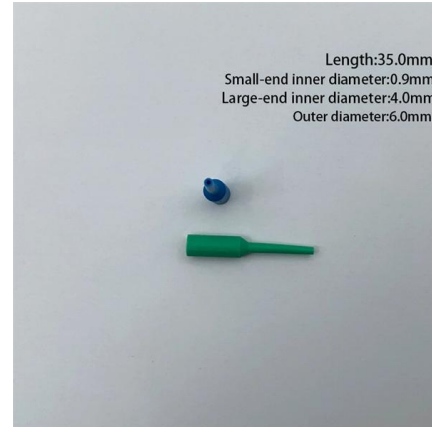
GRL's Low-Voltage Enclosed Busbar System exemplifies these benefits: It eliminates drilling and cuts installation time and cabinet space by up to 60%. Key advantages--such as faster

[Contact Us](#)



Optimize operations and maintenance with a modular, highly reliable low-voltage switchboard for industry and infrastructure.

[Contact Us](#)



Contact Us

For datasheets, pricing, or custom fiber access solutions, please visit:
<https://www.frindel.es>