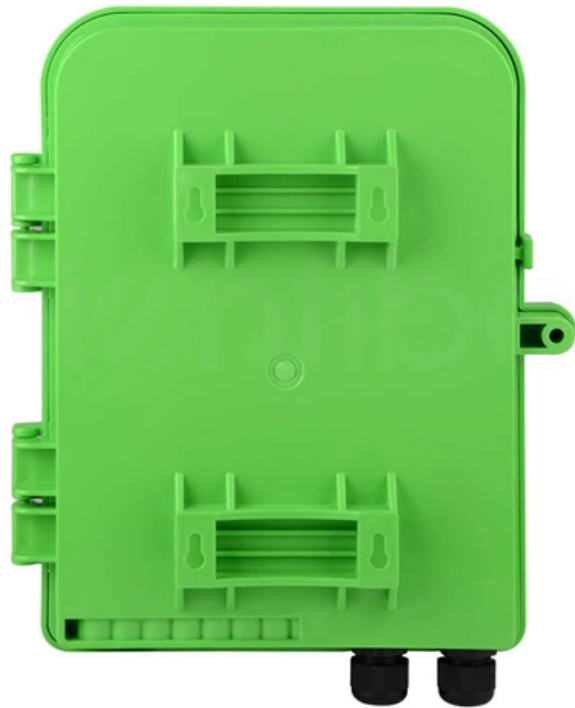


# **Low-voltage enclosed busbar support**





## Low-voltage enclosed busbar support

---



### Catalog Extract LV 10 · 10/2022

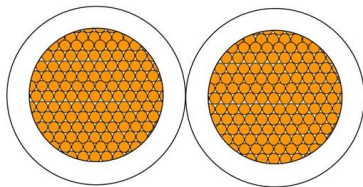
Our busbar systems for electrical installations offer a particularly easy way of fitting distribution systems with electrotechnical components. The modular design saves space, while quick assembly contacts

[Contact Us](#)

### Busbars and Connectors in HV and EHV installations

In indoor medium-voltage (MV) and low-voltage (LV) installations--particularly where high currents and limited space coexist--busbars are often enclosed in metallic

[Contact Us](#)



### Layout 1

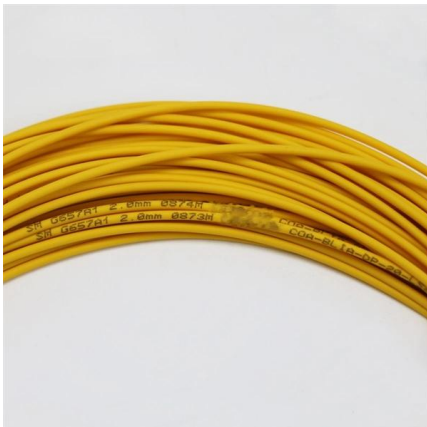
Guide to Low Voltage Busbar Trunking Systems Verified to BS EN 61439-6 Introduction BEAMA is the long established and respected trade association for the electrotechnical sector.

[Contact Us](#)

### SIVACON

Optimize operations and maintenance with integrated digital solutions and low-voltage systems for power distribution. Our busbar trunking systems provide an

[Contact Us](#)



### Switchboard

IEC 61439 'Low-voltage switchgear and controlgear assemblies', specifies standard arrangements of switchboard (call forms of internal

[Contact Us](#)



### Low-voltage switchgear

I agree that Rittal BmbH & Co. KG may process the personal data that I have provided above in order to send me information about system solutions relating to

[Contact Us](#)



### Technical Application Papers No.11 Guidelines to the construction

Technical Application Papers No.11 Guidelines to the construction of a low-voltage assembly complying with the Standards IEC 61439 Part 1 and Part 2

[Contact Us](#)



## What Is A Busbar - Power Distribution In Electrical

A busbar is a rigid conductor, typically made of copper or aluminum, that serves as a common connection point for multiple circuits within electrical enclosures. It

[Contact Us](#)



## Power-Zone Metal-Enclosed Busway

Power-Zone(TM) metal-enclosed, non-segregated phase medium and low voltage bus systems are custom-designed and manufactured.

[Contact Us](#)



## Metal Enclosed Busbar System (MEB) - LV & MV

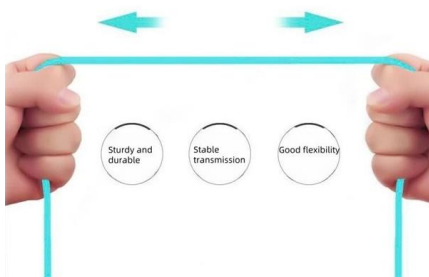
The Metal-Enclosed Low and Medium Voltage Busbar system offers many advantages that include: Modular frame arrangements Optional barriers for

[Contact Us](#)



## More durable and robust

The outer layer is made of environmentally friendly PVC, which is soft and elastic. It can be stretched without damage, so you can use it with confidence.



## What Are Electrical Busbars? A Complete Guide to

The performance and safety advantages they offer What Is an Electrical Busbar? An electrical busbar is a metallic strip or bar that carries large

[Contact Us](#)

## Busbar Trunking vs Cables: Smarter LV



## Power Distribution

In today's rapidly evolving industrial and commercial electrical environments, engineers and contractors are under pressure to build systems that are scalable, efficient, and space

[Contact Us](#)



### Guide to Low Voltage Busbar Trunking Systems Verified to BS EN

Busbar trunking systems (BTS) are better suited for power distribution than cables when a low magnetic induction is required, as the BTS construction facilitates the optimum arrangement of conductors to

[Contact Us](#)

### ABB WavePro R

ABB WavePro-R Cast Resin Busway is a high performance low-voltage busbar system. The cast resin forms an external surface which provides a water tight barrier around the current carrying conductors.

[Contact Us](#)



### Design and installation of low voltage busbar trunking

Cable jointer not required. Busbar trunking systems may be dismantled and re-used in other areas. Busbar trunking systems provide a better

[Contact Us](#)



## GRL Low-Voltage Enclosed Busbar Systems

GRL's Low-Voltage Enclosed Busbar System exemplifies these benefits: It eliminates drilling and cuts installation time and cabinet space by up to 60%. Key advantages--such as faster

[Contact Us](#)



## Copper Busbars , nVent ERIFLEX

Copper Busbars Heavy-duty power connections for the toughest tasks An alternative to multiple, large cables, ERIFLEX copper busbars are used for making strong and reliable power and earth-ground

[Contact Us](#)

## Low Voltage Switchgear Design for US and EU Markets: Busbar

Learn how low voltage switchgear design balances busbar current rating, cabinet space, heat management, and modular construction for U.S. and European projects.

[Contact Us](#)



## Busbars

ABB busbar systems enable safe and easy cross-wiring of miniature circuit breakers, residual current devices and other Modular DIN-Rail products.

[Contact Us](#)



## Busbar Market Size, Industry Share , Forecast, 2026-2034

Low voltage applications contribute approximately 30% to the total Busbar Market share, making this the largest application segment. These busbars are extensively used in residential,

[Contact Us](#)



### Safety Distance for Low-Voltage Busbars

Optimizing safety distances and structural design in low-voltage busbar applications enhances system safety and long-term reliability while reducing electrical failure risks. Compliance with IEC and UL

[Contact Us](#)

### Busbar System

An electrical busbar system is a modular approach to electrical wiring in which instead of routing standard cables to each electrical device, the electrical devices are fitted to adapters that mount

[Contact Us](#)



### Busbar Design: Engineering for High-Power DC

Design busbars for equal current sharing, low voltage drop, and scalability. Includes sizing, material selection, and thermal considerations.

[Contact Us](#)



## 26 25 00 Low-Voltage Enclosed Bus Assemblies

Show fabrication and installation details for enclosed bus assemblies. Include plans, elevations, and sections of components. Designate components and accessories, including clamps, brackets,

[Contact Us](#)



## Contact Us

---

For datasheets, pricing, or custom fiber access solutions, please visit:  
<https://www.frindel.es>