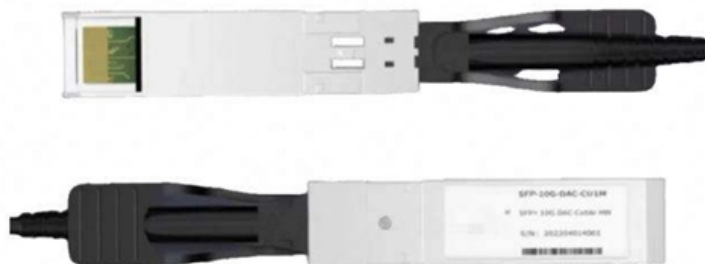


Low-voltage cable tray thickness





Low-voltage cable tray thickness



How to Choose Cable Tray for Low Voltage System

Overfilling a tray is a common and costly mistake. The global industry standard for low-voltage systems is to never exceed a 40-50% fill ratio. This

[Contact Us](#)

GUIA BASOR G02 IMPRESA_ENERO22_OK_BAJA

According to the American standard UL 568 "Nonmetallic Cable Tray Systems", the tray shall have enough dielectric strength to withstand the ASTM D 149 test with the application of a voltage of



[Contact Us](#)



12-SDMS-06

Metallic cable trays shall be grounded to the grounding network to limit voltages during fault condition and electrically continuous per Section 392 of ANSI/NFPA 70.

[Contact Us](#)

Selecting Cable Trays: A Complete Guide for Cable

Step 1: Define Cable Parameters and Classify Load The first step involves a detailed analysis of the cable inventory to determine the tray's

[Contact Us](#)



Cable Tray Selector

MP Husky's cable tray selector for choosing the correct tray type (ladder, solid bottom, perforated, wire mesh) and size based on load, cable type and

[Contact Us](#)



Cable Tray

Explore precision-engineered Wire Mesh Tray built from high-quality welded steel, offering a safe, reliable pathway for low-voltage and data cables

[Contact Us](#)



Cable Tray Dimensions Guide: Standard Sizes, Tray

In practice, cable tray dimensions are a system of interrelated measurements --width, depth, length, and material thickness--that directly affect

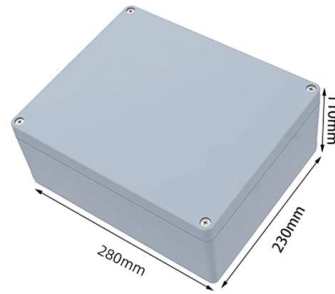
[Contact Us](#)



Tray Cable Size Chart: Choosing the Right Gauge

In electrical engineering and industrial wiring, selecting the correct tray cable gauge is one of the most critical decisions you'll make. The gauge size impacts everything from

[Contact Us](#)



B-Line series Cable Tray Design Considerations

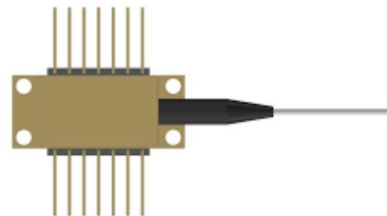
Available in 3, 4, and 6-inch widths with ventilated or solid bottoms, channel cable tray is ideal for smaller instrumentation cables and cable tray runs involving a small number of cables.

[Contact Us](#)

Cable Tray Dimensions Guide: Standard Sizes, Tray

Explore standard sizes by tray type, understand width and depth limits, and see how to calculate and choose compliant cable tray sizes for real projects.

[Contact Us](#)



Cable tray

ABB designs and manufactures cable tray systems, including perforated tray, cable ladder, channel tray and strut (metal framing).

[Contact Us](#)

Cable Tray Types and Sizes



These cable tray systems serve as efficient alternatives to traditional wireways and electrical conduits, which fully enclose cables. Designed to support and protect all

[Contact Us](#)



Cable Tray Types and Sizes

Explore various cable tray types and sizes for electrical installations. Learn about ladder, perforated, solid-bottom, wire mesh, and channel

[Contact Us](#)



Cable Tray Size Calculation for Project Engineers

Cable tray size calculation is important for ensuring safe cable installation, proper heat dissipation, and enough spare capacity for future

[Contact Us](#)

SUPPORTS DIN RAIL INSTALLATION



Cable Tray Size Choosing: Key Factors for Electrical

Learn how to choose the right cable tray size for your electrical system by key factors such as cable type, material, future expansion and etc.

[Contact Us](#)

Cable Tray Width Selection for Installations



with 600 Volt Single

Cable Tray Width Selection for Installations with 600 Volt Single Conductor Cables National Electrical Code (NEC) Section 318-11 Ampacities of Cables, Rated 2000 Volts or Less, in Cable Trays. (b)

[Contact Us](#)



B-Line series Cable Tray Design Considerations

As an industry leader in cable tray, Eaton offers one of the widest ranges of cable management solutions available in the market today with its B-Line series portfolio. With unmatched quality and service, we

[Contact Us](#)

Ultimate Guide to Cable Tray Selection - Types,

Learn how to choose the best cable tray system for your needs. Explore types, materials, installation tips, and NEC compliance in this expert guide.

[Contact Us](#)



Cable Tray SHIB NAL

The type of cable tray (e.g., solid, ventilated), ampacity (current-carrying limit) requirements, and the type and voltage rating of cable used determines the allowable fill for each cable tray.

[Contact Us](#)



LEGRAND CABLE TRAYS TECHNICAL GUIDE

Not all cable trays are equivalent. The mechanical and electrical characteristics, tests, certifications, overall quality management, recommendations mentioned in this technical guide only apply to our

[Contact Us](#)



How to Choose Cable Tray for Low Voltage System

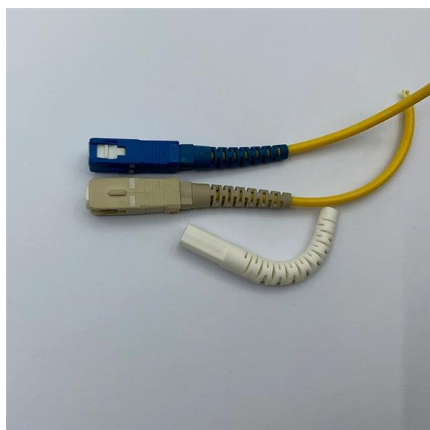
Selecting the correct cable tray for low voltage system--such as data networking, telecommunications, security, and building automation--is a critical

[Contact Us](#)

Cable tray manual

Typical 300 volt insulated multiconductor instrumentation tray cables (ITC) and power limited tray cables (PLTC) cost the same for both cable tray and conduit wiring systems.

[Contact Us](#)



Wire Mesh Cable Trays Technical Information Detailed,

Wire Mesh Cable Tray Detailed Information: a. A job site, field adaptable support system primarily for low voltage telecommunication and fiber optic cables. These

[Contact Us](#)

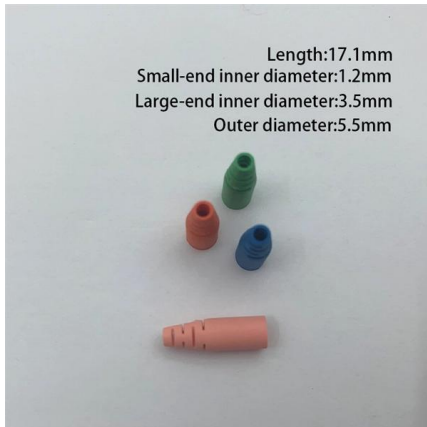
Cable Tray Technical Guide A practical



guide to product selection and

In designing supports for a cable tray system, consideration should be given to the loads associated with future cable additions and any additional loading that may be applied to the cable tray system (e.g.,

[Contact Us](#)



Cable Tray Dimensions and Specifications as per NEC

Many electrical systems employ cable trays. They route cables safely & efficiently. NEC defines minimum cable tray size & electrical installation

[Contact Us](#)

Wire Mesh Cable Trays Technical Information Detailed,

Trays shall be supported at a maximum span of 2.5m by trapeze, wall, floor or channel mounting methods and will not exceed maximum loads as specified by

[Contact Us](#)



Industrial Cable Tray Manufacturer & Supplier in India

High-load galvanized perforated & ladder cable trays. Leading industrial cable tray manufacturer & supplier in India. Custom sizes, full accessories, quick installation.

[Contact Us](#)



Prysmian CHTC® Low Voltage Tray Cables

Application The CHTC® cable is ideal for a wide range of applications, including but not limited to: audio, intercom, control, energy management and alarm circuits. The CHTC® instrumentation cable can be

[Contact Us](#)



Contact Us

For datasheets, pricing, or custom fiber access solutions, please visit:
<https://www.frindel.es>