

Lighting Primary Distribution Box Configuration





Lighting Primary Distribution Box Configuration



Distribution switchboards

Distribution switchboards, including the Main LV Switchboard (MLVS), are critical to the dependability of an electrical installation. They must comply with well-defined standards governing

[Contact Us](#)

Distribution Boards

Distribution boards, often referred to as electrical panels or breaker boxes, serve as the nerve center of any electrical system. Here we explore the crucial parts of a distribution board and gain insights into

[Contact Us](#)



Wiring Installation for Domestic Lighting: Rules for

Wiring installation for domestic lighting is important to create a safe, functional, and comfortable living environment. Learn everything about wiring installation.

[Contact Us](#)

High-Quality Electrical Lighting Distribution Boxes Explained

The importance of selecting a high-quality electrical lighting distribution box cannot be overstated. These components play a vital role in ensuring the safety, reliability, and efficiency of lighting systems



WORLD WIDE WEB JOURNAL Home

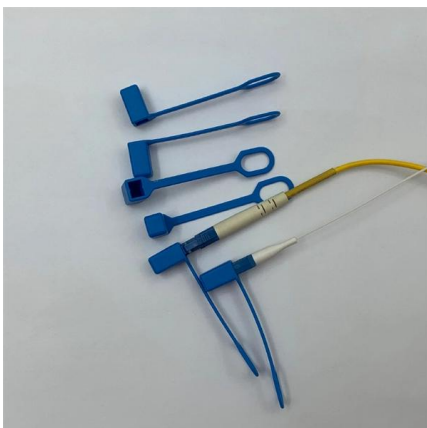
O'Reilly & Associates, Inc. 103A Morris St.
Sebastopol, CA United States

[Contact Us](#)

Distribution Box Wiring Steps

?Preparation phase? ?Box installation?: Make sure that Distribution box has been correctly installed and fixed. ?Material preparation?: Prepare the required cir

[Contact Us](#)



Size determination, installation method and wiring mode

2) The power distribution box and lighting distribution box should be set separately. If they are combined in the same distribution box, the power and lighting lines

[Contact Us](#)



The Complete Guide to Distribution Box: Installation, Types & More

What's the difference between a distribution box and a sub-panel? A distribution box typically refers to the main electrical panel that receives power from the utility service. A sub-panel is

[Contact Us](#)



Understanding Distribution Boxes: A Comprehensive Guide

A distribution box, also known as a power distribution box or electrical distribution box, is used to distribute electrical power safely to multiple

[Contact Us](#)

ephesus-remote-distribution-installation-manual

Read and understand this entire manual and any additional site-specific installation documents before attempting to assemble, install, or operate the luminaire. If you have any questions regarding the

[Contact Us](#)



How to Choose a House Distribution Box , CHINT global

This article guides you through selecting a distribution box that is both affordable and safe, emphasizing key features, configuration, and practical

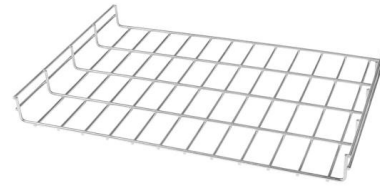
[Contact Us](#)



Single Phase Distribution Box Definition and Main Parts

A single phase distribution box controls and protects home or office circuits. Learn its definition, main parts, and how it ensures electrical safety.

[Contact Us](#)



The installation requirements for the distribution box

Learn how to install a distribution box safely and correctly. Covers wiring, placement, standards, and expert tips for a compliant setup.

[Contact Us](#)

Primary and secondary power distribution systems (layouts explained)

For the new college graduate from a four-year electrical engineering curriculum working in the field of commercial and industrial power systems, this guide can serve as a starting point for

[Contact Us](#)



Distribution Boxes: Types and Functions

Learn what an electrical distribution box (DB/distribution board) is, its main components (MCB/RCCB/RCBO, SPD, busbar) and common types.

[Contact Us](#)



How to Install a Cable Distribution Box Safely and

In modern electrical systems, cable distribution boxes (also known as electrical distribution boxes or distribution boxes) play a crucial role as the key

[Contact Us](#)



How to Wire a Junction Box for Lighting: Circuit Diagram

Learn about the wiring diagram for a junction box lighting circuit. Understand how junction boxes are used to connect and distribute electricity for lighting fixtures in

[Contact Us](#)



Powerful manufacturers - 20+ years of experience - Support customization

For more product types, please contact customer service>>>

Send inquiry



Lighting Distribution Boxes for Power Control

These boxes seamlessly integrate with various Lighting Accessories and support complete Lighting Distribution Systems, including Marshalling Boxes and Lighting Control Modules. They're perfectly

[Contact Us](#)



Distribution Box: Types and Functions , Axis-Electricals

A distribution box ensures that electrical supply is distributed in the building, also known as a distribution board, panel board, breaker panel, or electric panel.

[Contact Us](#)



The Complete Guide to Distribution Box: Installation, Types & More

The primary purpose of a distribution box is to provide a safe and organized way to control electrical circuits. When an electrical fault occurs, such as an overload or short circuit, the protective

[Contact Us](#)



Understanding Distribution Boxes: Your Guide to Power

Weatherproof Distribution Boxes These serve specific outdoor purposes, with rain, dust, and extreme temperatures sealed shut, protecting any

[Contact Us](#)



Power Distribution Boxes Explained Simply

Discover the essentials of a Power Distribution Box--how it works, key types, benefits, and tips to ensure safe, efficient electrical power management.

[Contact Us](#)



Various specifications optional



6 Types Of Light Distribution Explained

You've probably heard "light distribution" before, but you may not have known precisely what it meant. In this article, we'll explain the various types of

[Contact Us](#)



Size determination, installation method and wiring mode

The distribution box is the central hub of the home circuit and the general control of our daily power consumption. It is an indispensable electrical equipment. If there

[Contact Us](#)



Contact Us

For datasheets, pricing, or custom fiber access solutions, please visit:
<https://www.frindel.es>