

Level 3 Distribution Box and Equipment





Level 3 Distribution Box and Equipment



Essential Rules for 3-Level Electrical Distribution

The main distribution board should be located near the power source. Distribution boards should be placed in areas where electrical equipment or loads are

[Contact Us](#)

Understanding Distribution Boxes: A Comprehensive Guide

A distribution box, also known as a power distribution box or electrical distribution box, is used to distribute electrical power safely to multiple

[Contact Us](#)



Design requirements and standards for low voltage

Key Takeaways Always prioritize safety by following NEC and IEC standards for low voltage distribution boxes. Check voltage and current ratings to

[Contact Us](#)

Distribution Box - Astryd Power Pvt. Ltd.

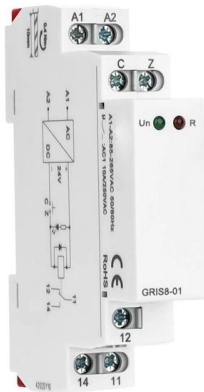
Distribution Box Distribution Box A distribution box is an essential component in electrical systems, serving as the central point for distributing electricity to various circuits, appliances, and devices



Power Distribution Equipment

Each has its own unique standards and application guidelines, and one facet of good power system design is the knowledge of when to apply each type of equipment and the limitations of each type of

[Contact Us](#)



Essential Equipment for BSL-3 Labs: Complete List

Find a comprehensive list of essential equipment for BSL-3 laboratories. From biosafety cabinets to autoclaves, ensure your lab is fully equipped.

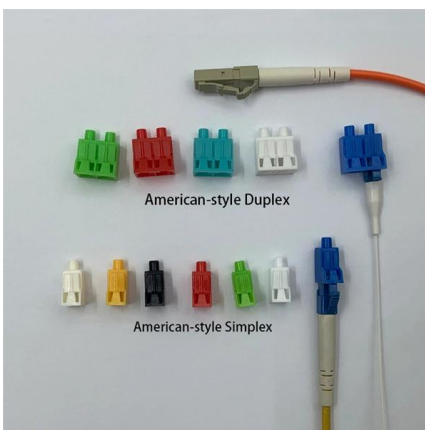
[Contact Us](#)



The Meaning and Function of Primary, Secondary, and Tertiary

Typically, primary distribution does not directly supply power to devices, secondary distribution handles power equipment with three-phase electricity, and tertiary distribution refers to

[Contact Us](#)

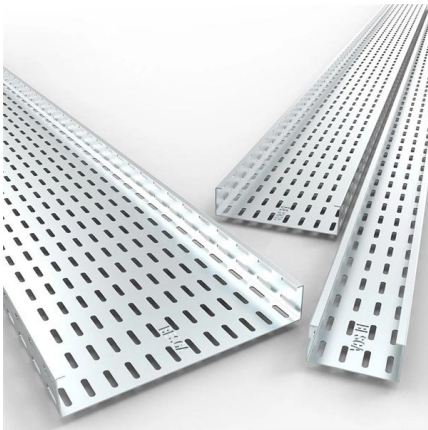




Three Phase Distribution Box Functions and

A three phase distribution box safely distributes and protects power for large equipment in factories, buildings, and high-demand commercial settings.

[Contact Us](#)



The Meaning and Function of Primary, Secondary, and Tertiary

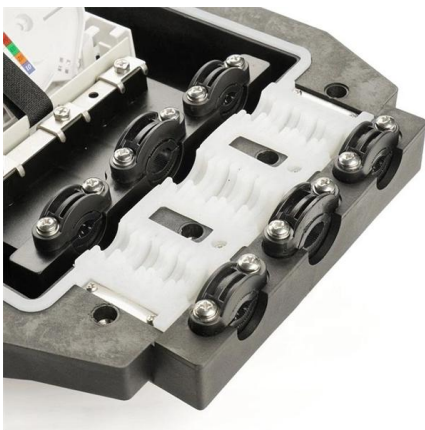
Tertiary: Final distribution point for equipment or household use. This structure ensures effective power management, safety, and reliability in complex electrical systems, particularly on construction sites or

[Contact Us](#)

Safety requirements of distribution box

The distribution box has the characteristics of small size, simple installation, special technical performance, fixed location, unique configuration function, not limited by

[Contact Us](#)



The Complete Guide to Distribution Box: Installation, Types & More

A sub-panel is a smaller distribution panel fed from the main panel to serve specific areas or loads. Both serve similar distribution functions but at different system levels. Making Smart

[Contact Us](#)



Distribution Box: Types and Functions , Axis-Electricals

Components of a Distribution Box: The basic structure and technical aspects of electrical distribution boards vary according to places and requirements. A typical

[Contact Us](#)



Power Distribution Boxes Explained Simply

Discover the essentials of a Power Distribution Box--how it works, key types, benefits, and tips to ensure safe, efficient electrical power management.

[Contact Us](#)



How to Wire 3-Phase, 400V Distribution Board? IEC

Wiring a 3-Phase, 400V Distribution Board: UK & EU - IEC. How to Wire a Three-Phase Distribution Board for 400V Load Circuits and MCB's?

[Contact Us](#)



Understanding Distribution Boxes: Your Guide to Power

What are Distribution Boxes and Their Importance? What are Distribution Boxes and Their Importance? Distribution boxes, or electrical junction

[Contact Us](#)



What are the primary, secondary and tertiary distribution boxes?

Secondary distribution box: from the power line of primary distribution box to temporary power.
Level III distribution box: control cabinet of electrical equipment.

[Contact Us](#)



Three-Tier Power Distribution System in a Newly Constructed

Learn about the three-tier power distribution system (main secondary tertiary distribution boards) in a new residential area including their roles connections and safety measures for 0.4kV power supply.

[Contact Us](#)

Distribution Boxes: Types and Functions

Learn what an electrical distribution box (DB/distribution board) is, its main components (MCB/RCCB/RCBO, SPD, busbar) and common types.

[Contact Us](#)



What is Level 1, Level 2 and Level 3 distribution box

Three level distribution: That is, a distribution electric box is arranged under the general distribution box, and a switch box is arranged under the switch box, and electrical equipment is arranged under the

[Contact Us](#)



Low Voltage Cable Distribution Box , Cable Branch Box

The low voltage cable distribution box is used in the power distribution system with alternating currents of 50Hz and rated voltage of 380V. The box acts as the

[Contact Us](#)



DATA CENTER , 0, 1, 2, 3, 4, 5, 6 Levels of

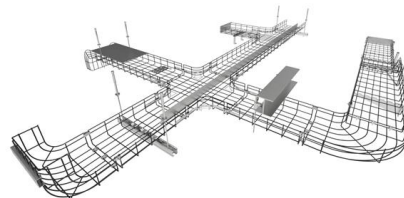
Managed by the General Contractor, Level 3 focuses on starting up/energizing individual plant, equipment, systems, and components, ensuring

[Contact Us](#)

Understanding Distribution Boxes: A Comprehensive Guide

A distribution box is a vital piece of equipment that ensures the effective and safe distribution of electrical power in various parts within a building

[Contact Us](#)



Industrial 3 Phase Electrical Distribution Box Guide

Explore the essentials of industrial 3 Phase Electrical Distribution Box for efficient power management in commercial settings. Get expert insights now.

[Contact Us](#)



three-level distribution system_switchgear_Switchboard_circuit

The three-level distribution system refers to a system that distributes electric power through three levels of distribution devices from the incoming power line at the construction site to the electrical equipment.

[Contact Us](#)



What is Level 1, Level 2 and Level 3 distribution box

Primary power distribution: temporary electricity is in a place where the construction needs electricity, that is, from the transformer into the three-phase power supply, ground wire, neutral line. Secondary

[Contact Us](#)

Contact Us

For datasheets, pricing, or custom fiber access solutions, please visit:
<https://www.frindel.es>