

# **Jamaica Low Voltage Busbar Specifications and Dimensions**





## Jamaica Low Voltage Busbar Specifications and Dimensions



### Busbar Trunking System

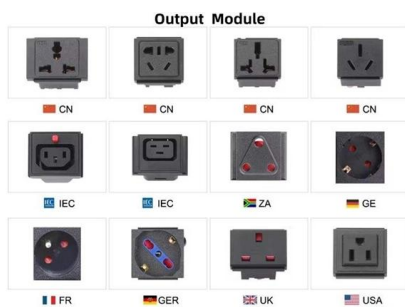
Our Busbar Trunking System with its sandwich construction offers you superior performance. It is safe and robust with high power efficiency, low voltage drop, and high tensile strength In 2020, after 40

[Contact Us](#)

### Bus Bar Insulator -- Types, Materials, Dimensions

Browse dimensional drawings and typical electrical/mechanical data for our standard busbar insulators. Select a series above to view available heights, thread types

[Contact Us](#)



#### Why Choose Us

- 20 Years of OEM/ODM 20 Years factory manufacturing experience.
- Professional R & D team 10-years experience/master/ electronic engineer.
- Fully Certified Our are certified CE,UL,IEC, ISO9001,ISO14001,etc.
- Timely Delivery 21 production lines, 5000 employees, timely delivery guaranteed.
- Quality Assurance Professional QC team with full process inspection.
- After-sales service After Sales Service for Customer Satisfaction.

### SIVACON

Explore products Optimize operations and maintenance with integrated digital solutions and low-voltage systems for power distribution. Our busbar trunking

[Contact Us](#)

### Aluminum Busbar Grades and Specifications

Introduction of Chalco Conductive Aluminum Busbar AP Precision Metals takes pride in offering high-quality aluminum bus bars that meet

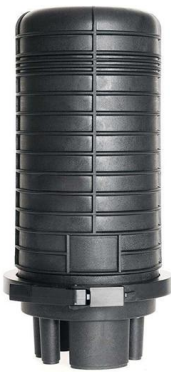
[Contact Us](#)



### Catalog Extract LV 10 · 10/2022

Our busbar systems for electrical installations offer a particularly easy way of fitting distribution systems with electrotechnical components. The modular design saves space, while quick assembly contacts

[Contact Us](#)



### Bus Bar Data , PDF

The document outlines specifications for low voltage busways and bus risers, including compliance with IEC standards and requirements for materials,

[Contact Us](#)



### LOW VOLTAGE INSTALLATION SPECIFICATION

Busbars shall be mounted in the top section of the assembly and shall be rigidly supported by means of approved insulated busbar clamps (at intervals not exceeding 500mm) to prevent damage resulting

[Contact Us](#)





Summary This specification covers the electrical characteristics and general requirements for a continuous open channel, low voltage busbar/busway system. The system shall be designed

[Contact Us](#)



### **2CDC446001D0201**

Busbar systems and installation accessories  
When connecting aluminum conductors, ensure that the contact surfaces of the conductors are cleaned, brushed and treated with grease.

[Contact Us](#)

### **Low Voltage Busbar Trunking Guide , PDF , Electrical**

This document provides guidance on low voltage busbar trunking systems according to BS EN 61439-6. It defines busbar trunking systems and components, and

[Contact Us](#)



### **IEC 61439 Standards-R1**

The rated operational voltage of an equipment is a value of voltage which, combined with a rated operational current, determines the application of the equipment and to which the relevant tests and

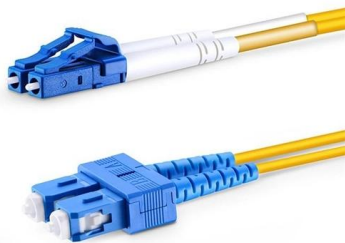
[Contact Us](#)



### Catalog Extract LV 10 · 04/2023

Energy data and power with plug-and-work: Our innovative powerline technology makes this possible for SIVACON 8PS busbar trunking systems - efficient and reliable.

[Contact Us](#)



### Busbar Design Guide

If this program recommends sizes that do not fit into the ranges below, change either the number of conductors or the section thickness of the busbar and recalculate the minimum cost solution

[Contact Us](#)

### Copper Busbar Specifications and Ratings

This document provides data and specifications for copper busbars used in indoor installations. It includes tables listing the continuous current ratings in amps for

[Contact Us](#)



### Busbar Design Guide

Typical Busbar Sizes If this program recommends sizes that do not fit into the ranges below, change either the number of conductors or the section thickness of the busbar and recalculate the minimum

[Contact Us](#)



## Design and installation of low voltage busbar trunking

Cable jointer not required. Busbar trunking systems may be dismantled and re-used in other areas. Busbar trunking systems provide a better

[Contact Us](#)



### Vertiv PowerBar HPB

Overview The busbar is housed in an aluminium casing which acts as an earth. Ingress protection ratings are available from IP55. The busbar is painted in grey (RAL 7035). Other colours can be

[Contact Us](#)

## IEC 61439 Busbar Standard: A Guide to Low-Voltage

This standard covers busbars used for low-voltage assemblies, power distribution, photovoltaic power systems, and electrical energy control. The IEC



[Contact Us](#)



### Busbar Size and Rating Chart

Busbar Size and Rating Chart The document provides specifications for bus bar and cable sizes according to ampere ratings. It includes charts listing standard bus

[Contact Us](#)



## Catalog LV 10 10/2017, chapter 11

All busbar device adapters and device holders are designed for copper busbars according to DIN 46433, width 12 to 30 mm, thickness 5 mm and 10 mm, and special profiles up to 1600 A.

[Contact Us](#)



## IEC Standard For Busbar Sizing: Complete Guide To

IEC Standard for Busbar Sizing The International Electrotechnical Commission (IEC) issues globally accepted standards that promote safety and

[Contact Us](#)



## FTTH BOOK-TYPE TERMINAL BOX

Sleek Design. Reliable Connectivity.



COMPACT &  
DURABLE

EASY  
INSTALLATION

## Busbar Design Standards for MV Switchgear

Busbar design within Medium Voltage (MV) switchgear is a critical aspect, fundamentally ensuring the safe, reliable, and

[Contact Us](#)



## IEC Standard For Busbar Sizing: Complete Guide To

Learn the IEC standard for busbar sizing as per IEC 61439, including current-carrying capacity, temperature rise limits, and design criteria for safe and

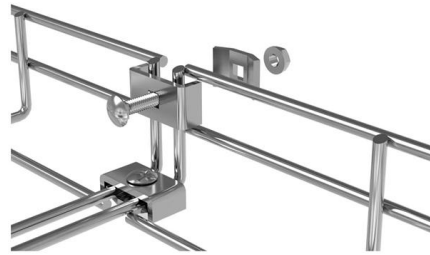
[Contact Us](#)



## Catalog Extract from LV 10 · 04/2020

Which is why products and systems featuring maximum safety and optimum efficiency are in demand. This comprehensive portfolio for low-voltage power distribution and electrical installation technology

[Contact Us](#)



## Busway

This is a CSI formatted construction guide specification for low voltage busway Busway - LV.

[Contact Us](#)

## Contact Us

---

For datasheets, pricing, or custom fiber access solutions, please visit:  
<https://www.frindel.es>